

Lung Cancer in Texas

- Lung cancer is the second most common cancer among Texans.
- The **overall incidence rate** of lung cancer in Texas from 2017-2021 was **46.2** cases per 100,000.
- The **overall mortality rate** from lung cancer in Texas was **30.4** deaths per 100,000.
- Texas ranks in the bottom tier for lung cancer screening adherence.¹

16,272

Texans are expected to be diagnosed with lung cancer in 2024.

10,512

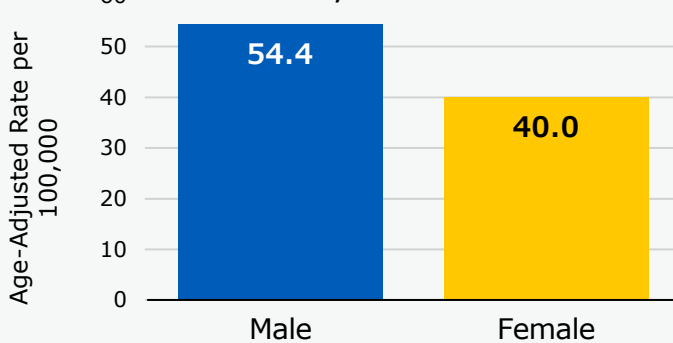
Texans are expected to die of lung cancer in 2024.

14.9

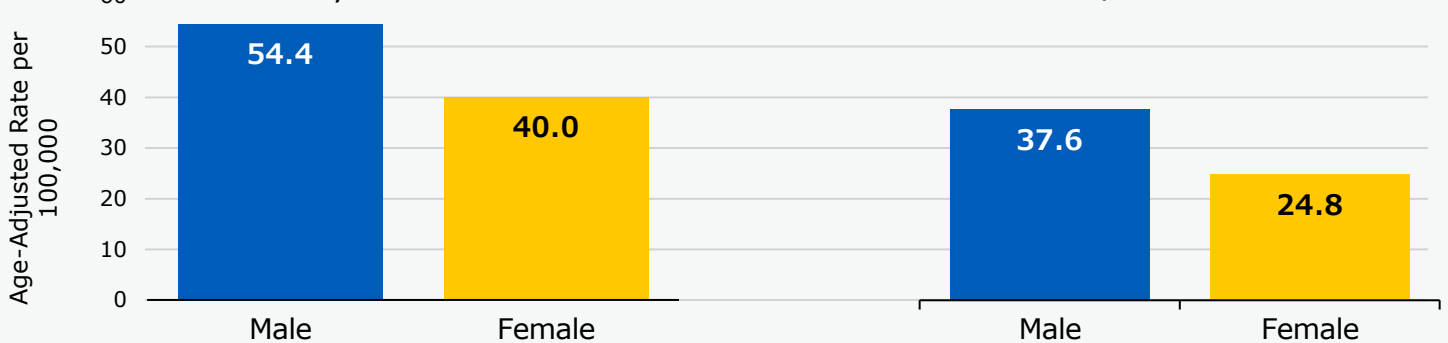
Average number of years of life lost for each lung cancer death in Texas from 2017-2021.

Men Face Higher Lung Cancer Diagnosis and Mortality Rates

Lung Cancer Incidence Rates in Texas, 2017-2021

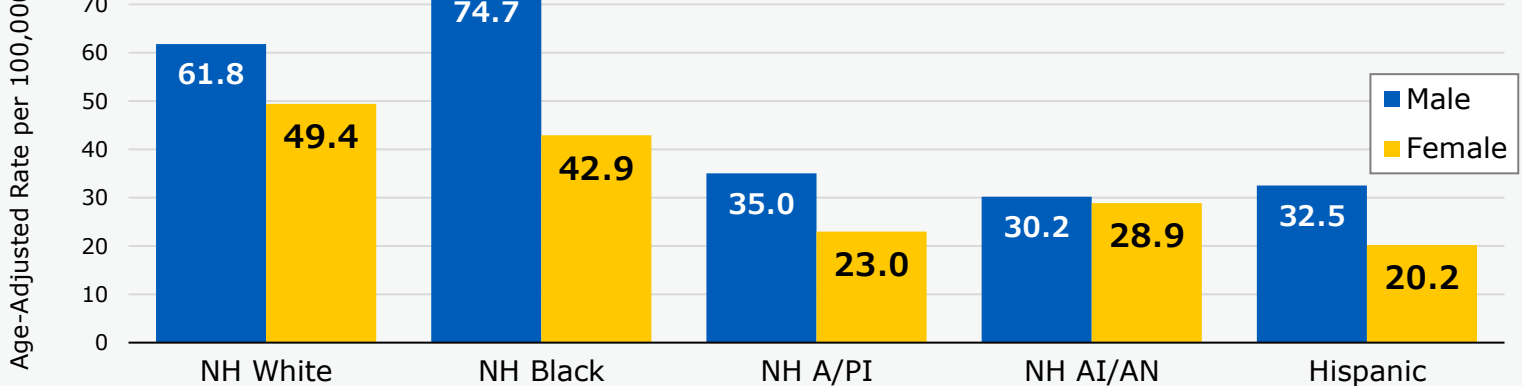


Lung Cancer Mortality Rates in Texas, 2017-2021



Racial Disparities in Lung Cancer Incidence

Lung Cancer Incidence by Race/Ethnicity and Sex in Texas, 2017-2021



NH = Non-Hispanic; A/PI = Asian/Pacific Islander; AI/AN = American Indian/Alaska Native.

For the purposes of this report, lung cancer is defined as cancers of the lung and bronchus.

¹ Source: American Lung Association (2023). State of Lung Cancer. Retrieved from lung.org/research/state-of-lung-cancer/states/texas

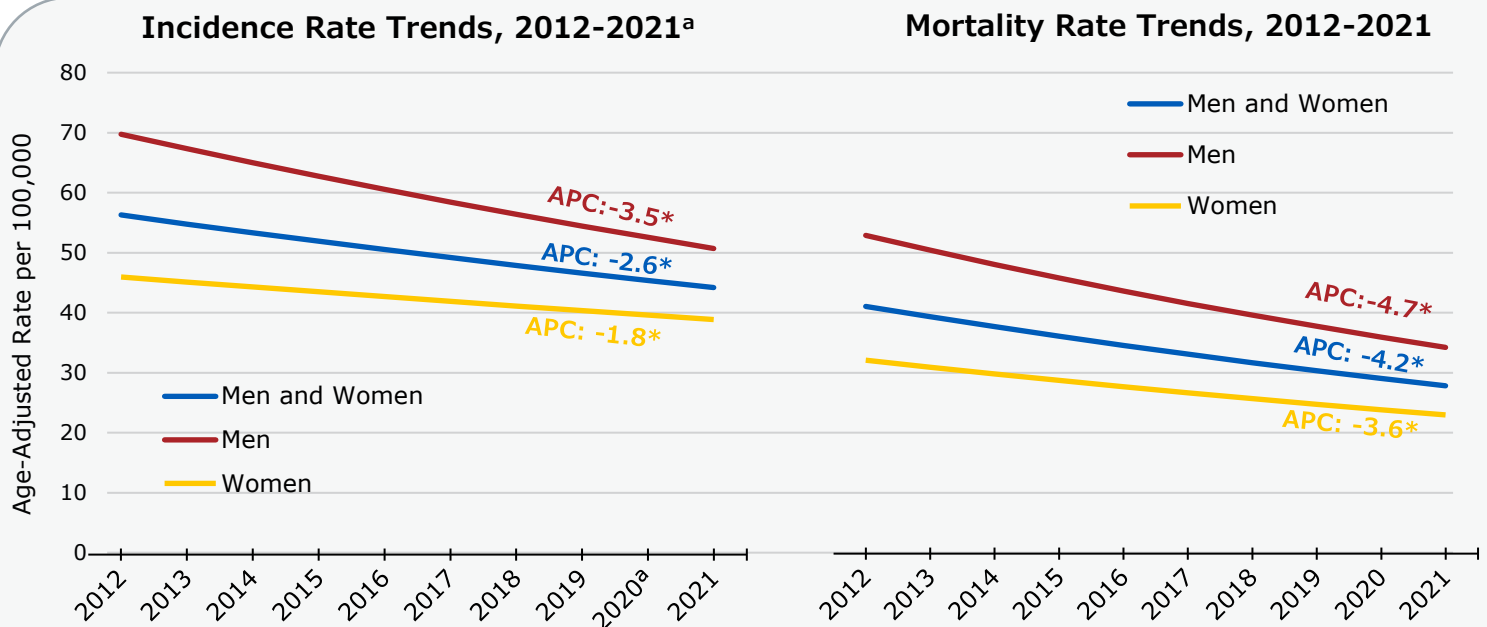


TEXAS
Health and Human
Services

Texas Department of State
Health Services

dshs.texas.gov/tcr

Lung Cancer Incidence and Mortality Trends



- From 2012-2021, lung cancer incidence rates significantly decreased by 2.6% per year, and mortality rates decreased by 4.2% per year.
- Lung cancer incidence and mortality rates decrease more among men than among women.

Trend lines represent the modeled rates and are labeled with the Annual Percent Change (APC).

^a 2020 excluded from incidence trends.

* Statistically significant change.

Lung Cancer Screening

WHY

Early Diagnosis Saves Lives



The 5-year relative survival rate for Localized Disease is 55.9%



The 5-year relative survival rate for Distant Disease is 8.6%

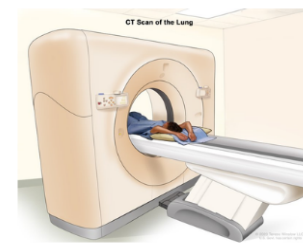
WHO

Eligibility Criteria

- 50-80 years old
- Smoking history of 20 pack-years
- Currently a smoker or quit within the past 15 years

HOW

Low-dose CT Scan (LDCT)*



© 2023 Terese Winslow LLC, U.S. Govt. has certain rights

- In this graphic, gray figures represent the proportion of people who died within five years of their cancer diagnosis. Blue figures represent the proportion who survived five or more years after diagnosis.
- **Localized** disease means the cancer is limited to the place where it started. **Distant** disease means cancer has spread to distant parts of the body.

Calculated using the first invasive tumor for individuals (ages 0-99 years) diagnosed with cancer between 2014-2020 and followed through December 31, 2021.

Eligibility Criteria derived from 2021 U.S. Preventive Task Force Recommendations.

A pack-year is equal to smoking one pack (or about 20 cigarettes) per day for a year. For example, a person could have a 20 pack-year history by smoking one pack a day for 20 years, or by smoking two packs a day for 10 years.

*LDCT: Low-dose Computerized Tomography.

Data Sources:

Texas Cancer Registry (dshs.texas.gov/tcr) SEER*Stat Database, 1995-2021 Incidence, Texas statewide, 2023 Submission, cutoff 10/09/2023. Texas Department of State Health Services, Cancer Epidemiology and Surveillance Branch, created March 2024.

Texas Cancer Registry (dshs.texas.gov/tcr) SEER*Stat Database, 1990-2022 Mortality, Texas statewide. Texas Department of State Health Services, Cancer Epidemiology and Surveillance Branch, created March 2024.

Prepared by Texas Cancer Registry, Cancer Epidemiology and Surveillance Branch, Texas Department of State Health Services, August 2024.

If you have questions, contact us by calling 1-800-252-8059 or emailing CancerData@dshs.texas.gov. For more information on cancer in Texas, visit the Texas Cancer Registry online at dshs.texas.gov/tcr.