

# Consumer Safety

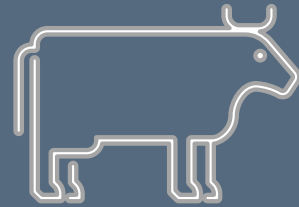
FOOD & DRUG COMPLIANCE



**TEXAS**  
Health and Human  
Services

Texas Department of State  
Health Services

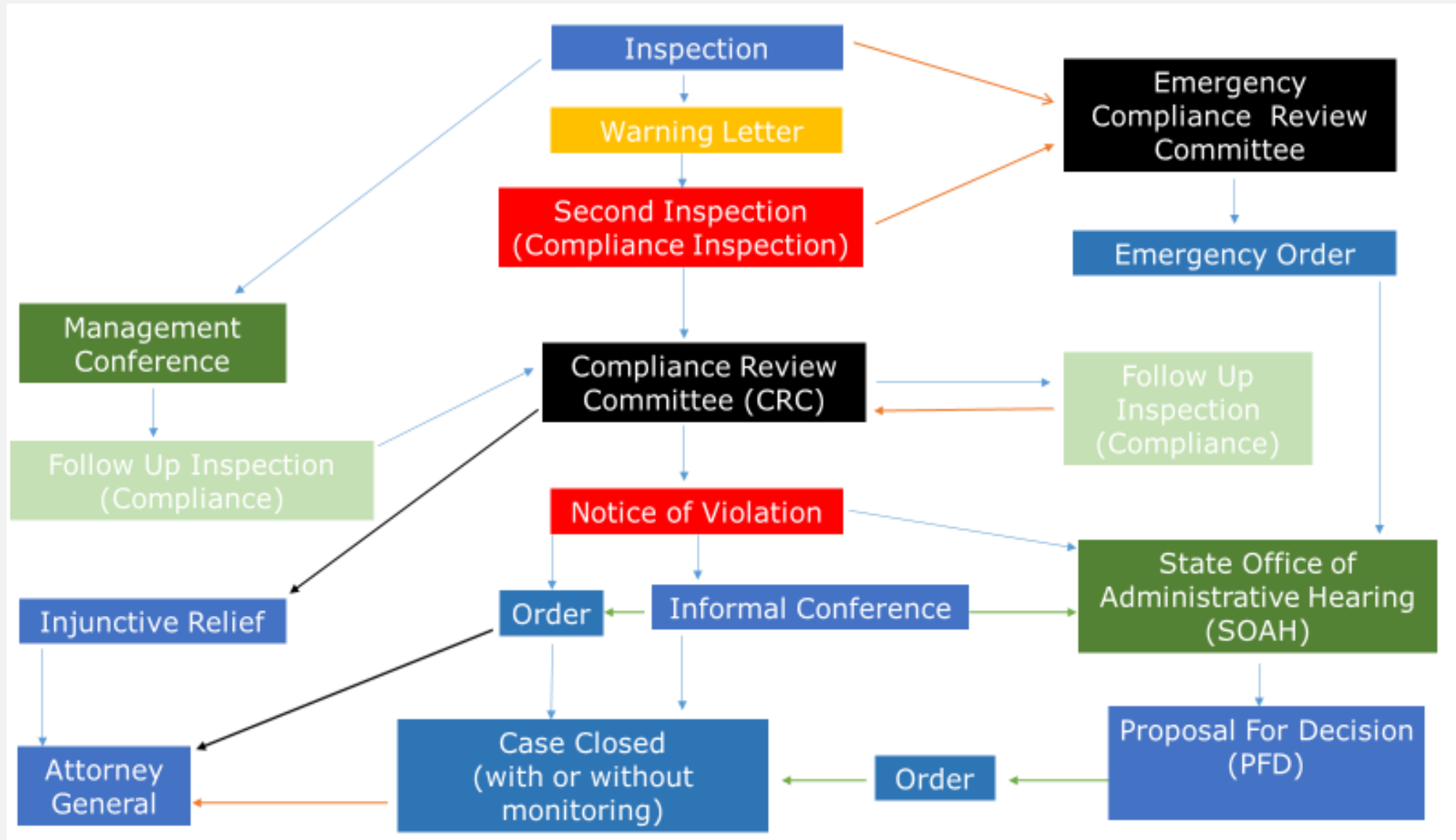
# MEAT SAFETY ASSURANCE (MSA)



## COMPLIANCE



# Food & Drug Compliance Flowchart



# Cases referred to Compliance

- Thirty (30) cases were referred in total:
  - All thirty (30) cases were triaged through Compliance Review Committee (CRC)

<b>CRC</b>	<b>30</b>
<b>Total</b>	<b>30</b>



# Outcomes

## After triage at CRC:

- Twenty-eight (28) Notice of Violation (NOV) letters were cleared to be issued
- Two (2) cases were returned to program



# Informal Conference (IC)

Three (3) cases were heard at an IC:

- Two (2) cases were settled after the IC
- One (1) case proceeded to the State Office of Administrative Hearings



# State Office of Administrative Hearings (SOAH)

Compliance referred thirteen (13) cases to SOAH, either at the request of the Respondent or at Department request.

- ❖ All Respondents were offered the opportunity to have their case(s) presented before an Administrative Law Judge.

SOAH REFERRAL	13
---------------	----

# Orders & Agreements Processed

- **Sixteen (16) Agreed Order/ Acceptance Order (AO)**
  - An Agreed Order is issued after an informal conference to document and memorialize the settlement agreement reached between a Respondent and the Department.
  - An Acceptance Order is issued when a Respondent accepts the proposed disciplinary action in the Department's Notice.
- **One (1) Default Order (DO)**
  - A Default Order is issued after the Respondent has not complied with the Department or has not responded to the Departments Notice.
- **One (1) Attorney General (AG) Referrals**
  - 1 case was referred to the AG for further administrative and/or judicial remedies on Respondents who failed to and/or refuse to comply with a final order.





# Cases Closed With or Without Monitoring

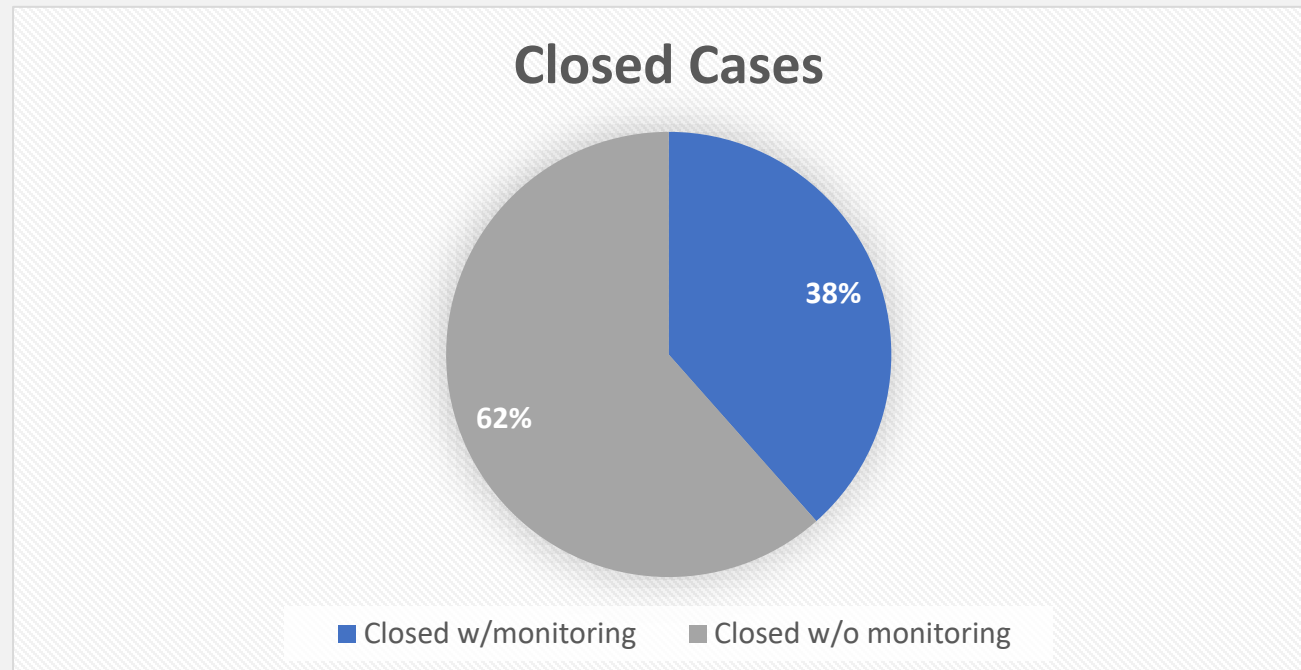
---

Cases that have a finalized Order or an Agreement are either:

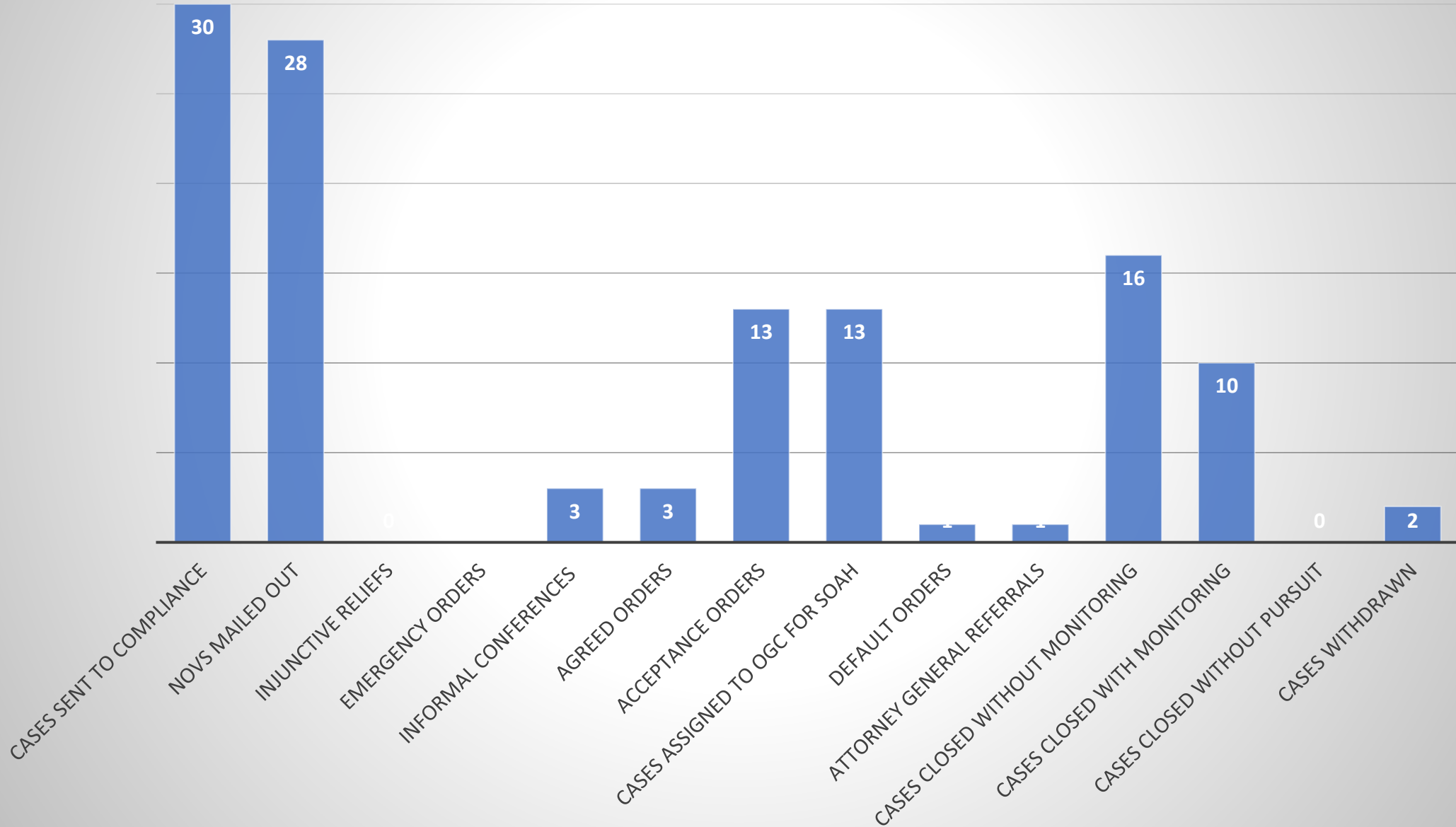
- Closed with monitoring
  - Terms and conditions to be met are still pending
- Closed without monitoring
  - All terms and conditions are met

# Cases Closed With or Without Monitoring Continued

- 10 cases were closed with monitoring
- 16 cases were closed without monitoring



# 2024 MSA Cases



Texas Department of State  
Health Services

# Ongoing trends

## Fiscal Years 2022, 2023, & 2024



For more information regarding Compliance Consumer Safety policies and protocols, please click on the link below:

[Consumer Safety Unit Procedure Manual 122123.pdf](#)



# Thank You!



**TEXAS**  
Health and Human  
Services

Texas Department of State  
Health Services