

# COMPLIANCE SECTION

# CONSUMER SAFETY BRANCH



**TEXAS**  
Health and Human  
Services

Texas Department of State  
Health Services

# DSHS FOODS GROUP



## YEAR TO YEAR ANALYSIS AND TRENDS FINAL ENFORCEMENT ACTIONS

Pursuant to 25 Texas Administrative Code 1.553(b)(1)(2)(3)

# Examples of Foods Group Operators

Examples include but are not limited to the following food operations

- Bakeries
- Bottling/Canning plants producing sauces, salsa, condiments, jams, jellies, canned vegetables and fruit
- Bottling/Canning plants producing water, soft drinks, fruit juice, vegetable juice
- Dietary supplement manufacturing and distributing
- Grocery stores with meat markets, delicatessens, or bakeries that package and display food for retail customer self-service
- Ice bagging or wholesaling
- Ice plants
- Juice packaging
- Packaging cut produce/vegetables, shelling and packaging nuts, and firms washing/packaging produce in a separate location from the farm where it was grown
- Restaurants and other food service operations providing food packaged on-site via a retail customer self-service display
- Seafood processors
- Water vending/bottling
- Wineries
- Breweries

# FOODS GROUP OPERATORS LICENSE TYPES

**Food Manufacturers -2401**

**Food Wholesalers- 2402**

**Food Warehouse Operators-2403**

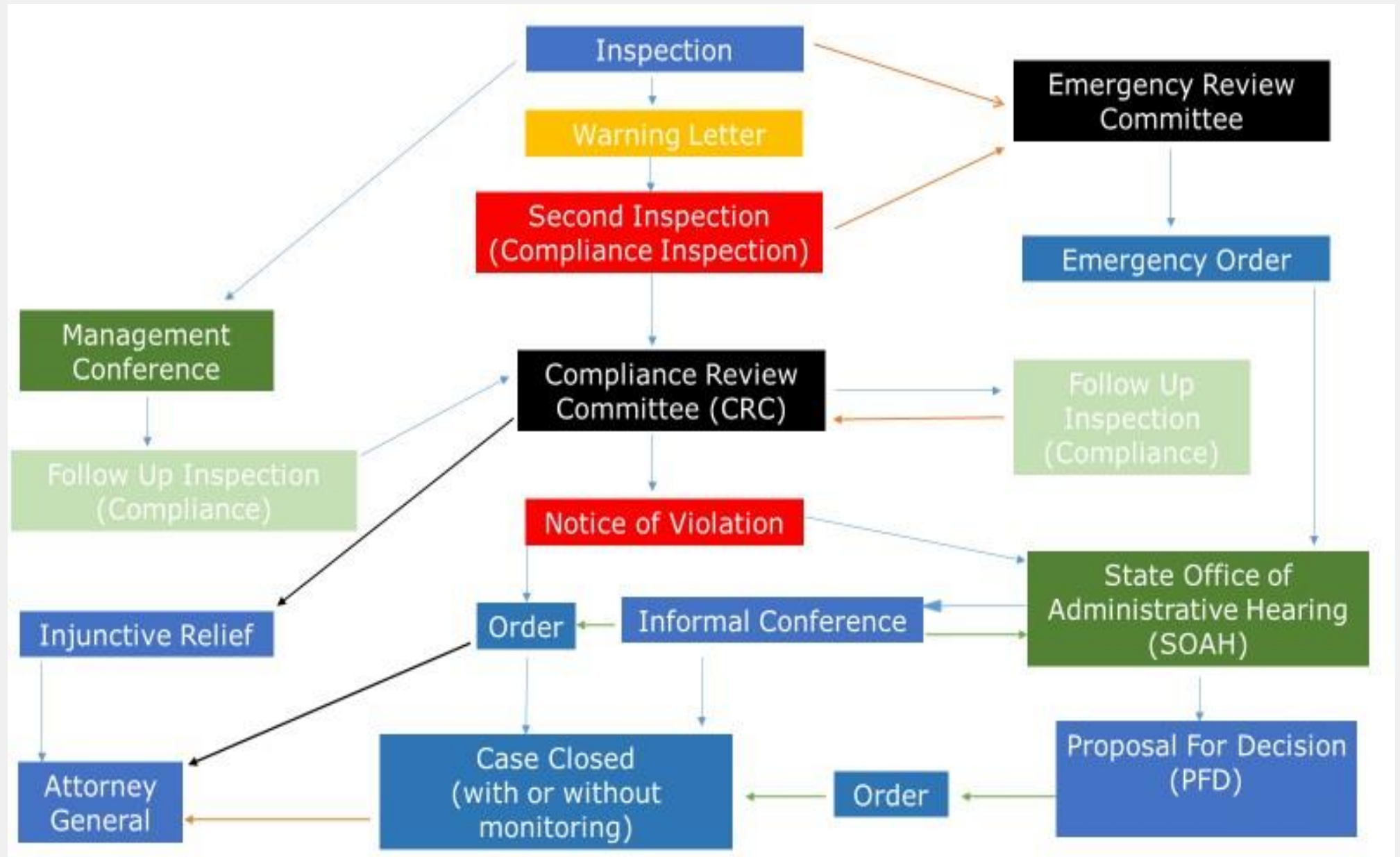
**Food Registrants- 2404**

**Salvage Operators- 2405**

**Food Truck Wreck- 2408**



# Foods Group Compliance Flowchart



# Cases referred to Compliance for Enforcement Action

- **FY22: 69**
- **FY23: 42**
- **FY24: 38**



# CRC Outcomes

## NOVs issued

**FY22: 74**

**FY23: 34**

**FY24: 40**



# Informal Conference (IC)

**Cases resolved informally**

**FY22: 26**

**FY23: 6**

**FY24: 2**



Texas Department of State  
Health Services



# State Office of Administrative Hearings (SOAH)

---

## Cases referred to and resolved at SOAH

**FY22: 5**

**FY23: 2**

**FY24: 3**

# Orders

## FY 22

- Default Orders: 30
- Acceptance Orders: 29
- Agreed Orders: 31

## FY 23

- Default Orders: 16
- Acceptance Orders: 2
- Agreed Orders: 9

## FY24

- Default Orders: 2
- Acceptance Orders: 13
- Agreed Orders: 13



# Case Closed

---

**Cases with final Order are either:**

- closed with monitoring  
(terms and conditions to be met are still pending)
  - closed without monitoring  
(all terms and conditions are met)
-

# Case Closed- Continued

## Cases Closed with Monitoring

**FY22- 34**

**FY23- 25**

**FY24- 6**

# Case Closed- Continued

## Cases Closed without Monitoring

**FY22- 54**

**FY23- 11**

**FY24- 22**



# Grand Total Penalty Amount Assessed

**FY-24: \$27,694.96**

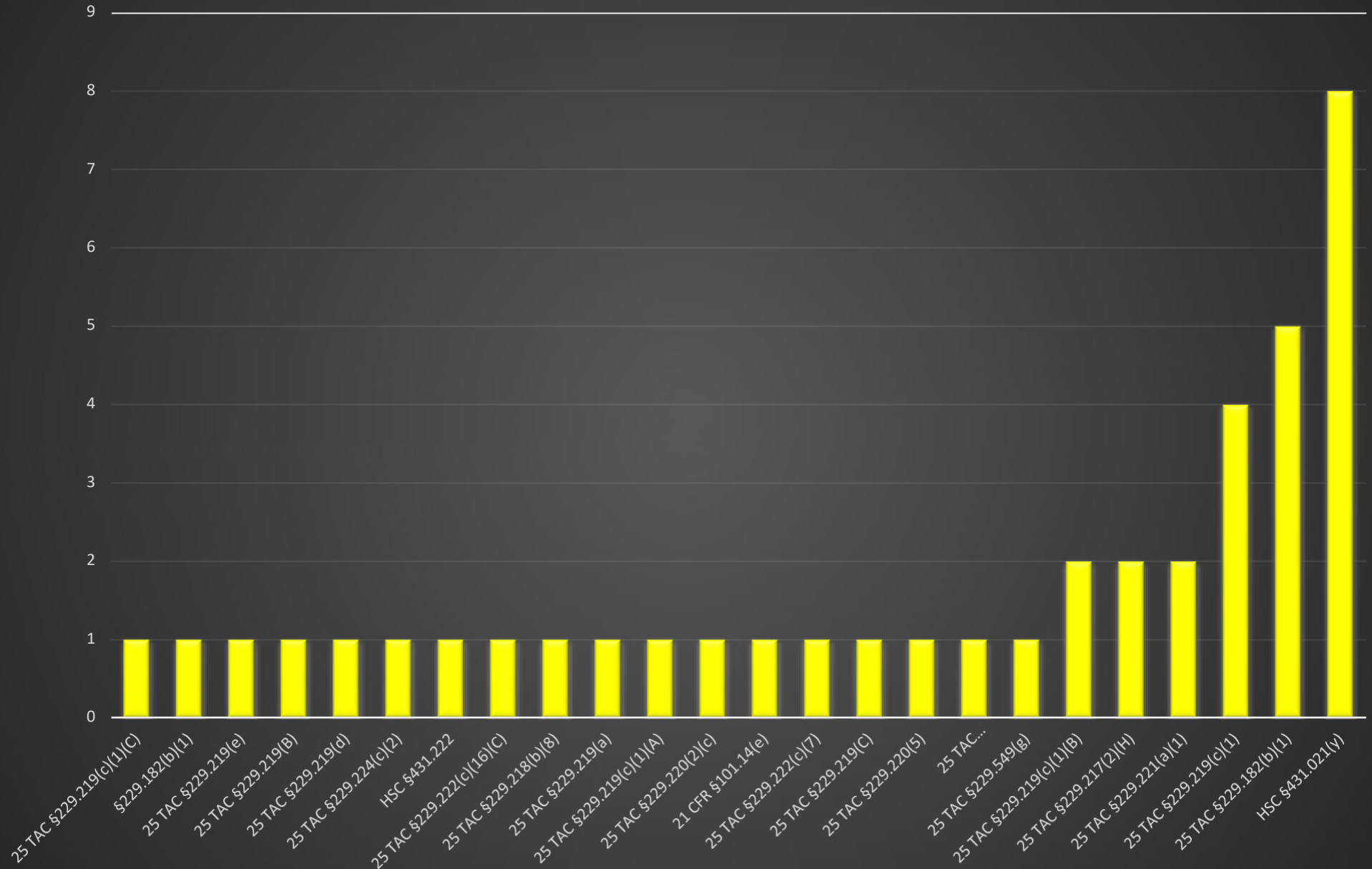
**FY-23: \$71,587.50**

**FY22: \$212,437.00**





# FY23 NOV Citations Trend

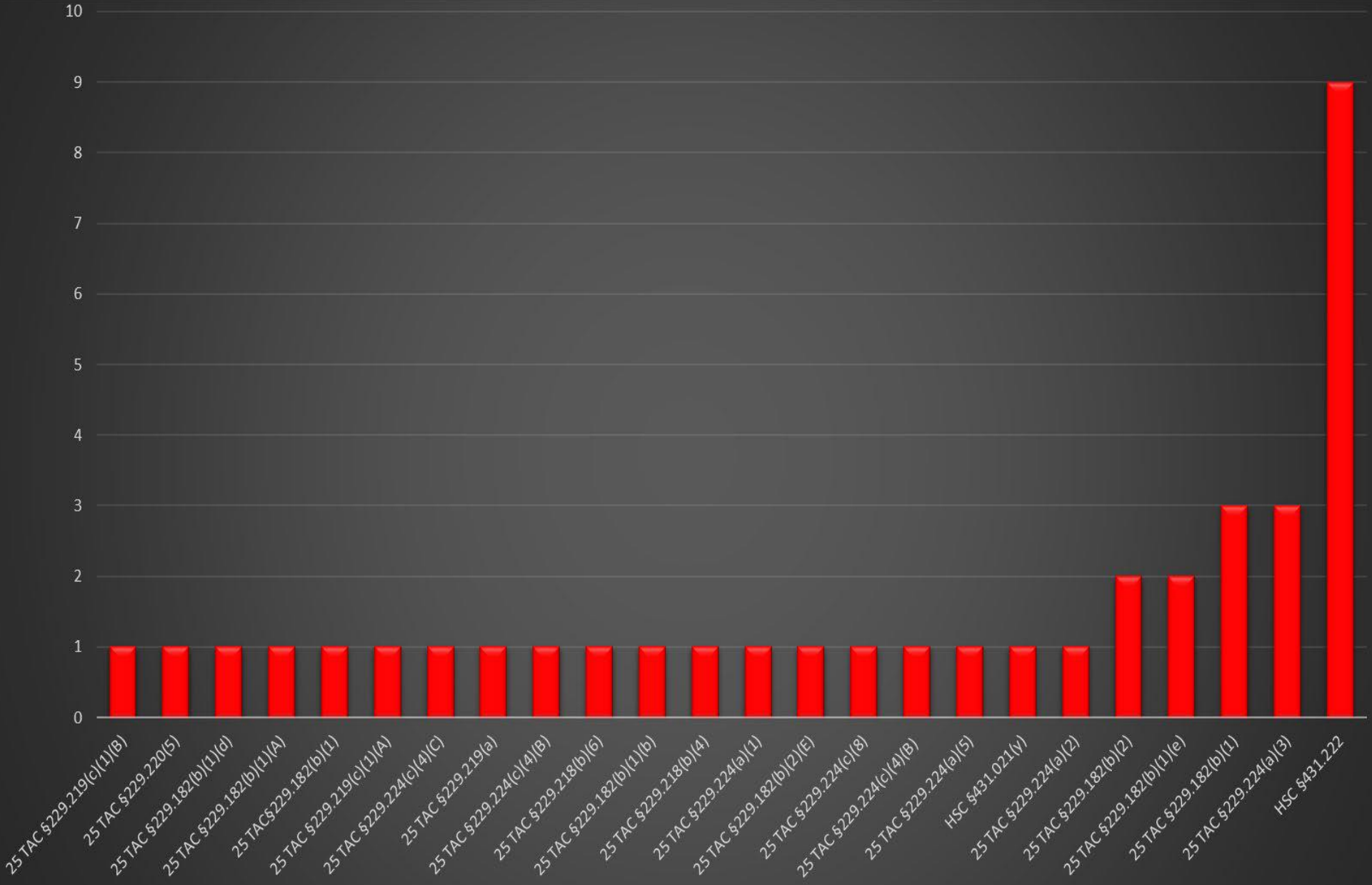


TEXAS  
Health and Human  
Services

Texas Department of State  
Health Services

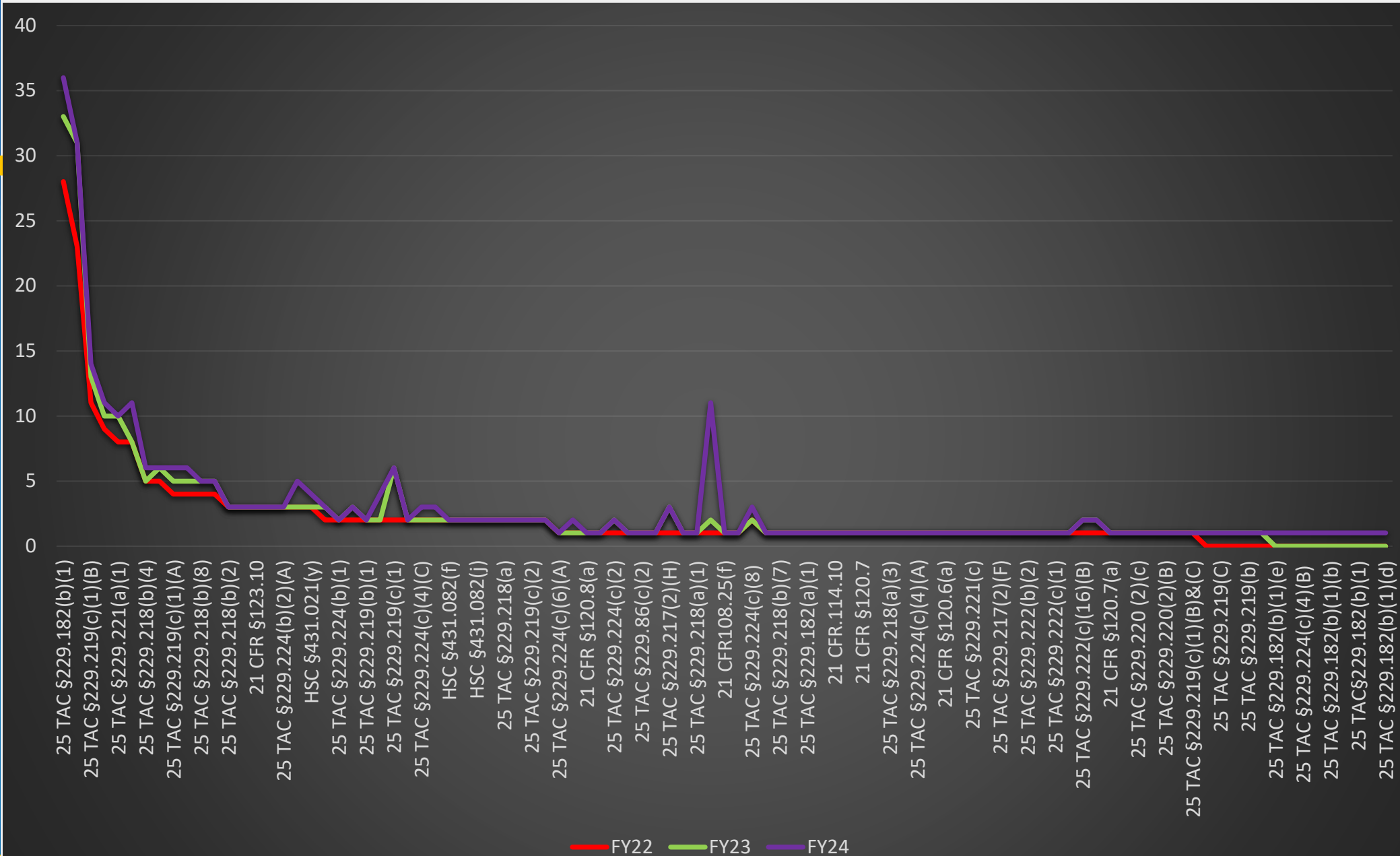


# FY24 NOV Citations Trend



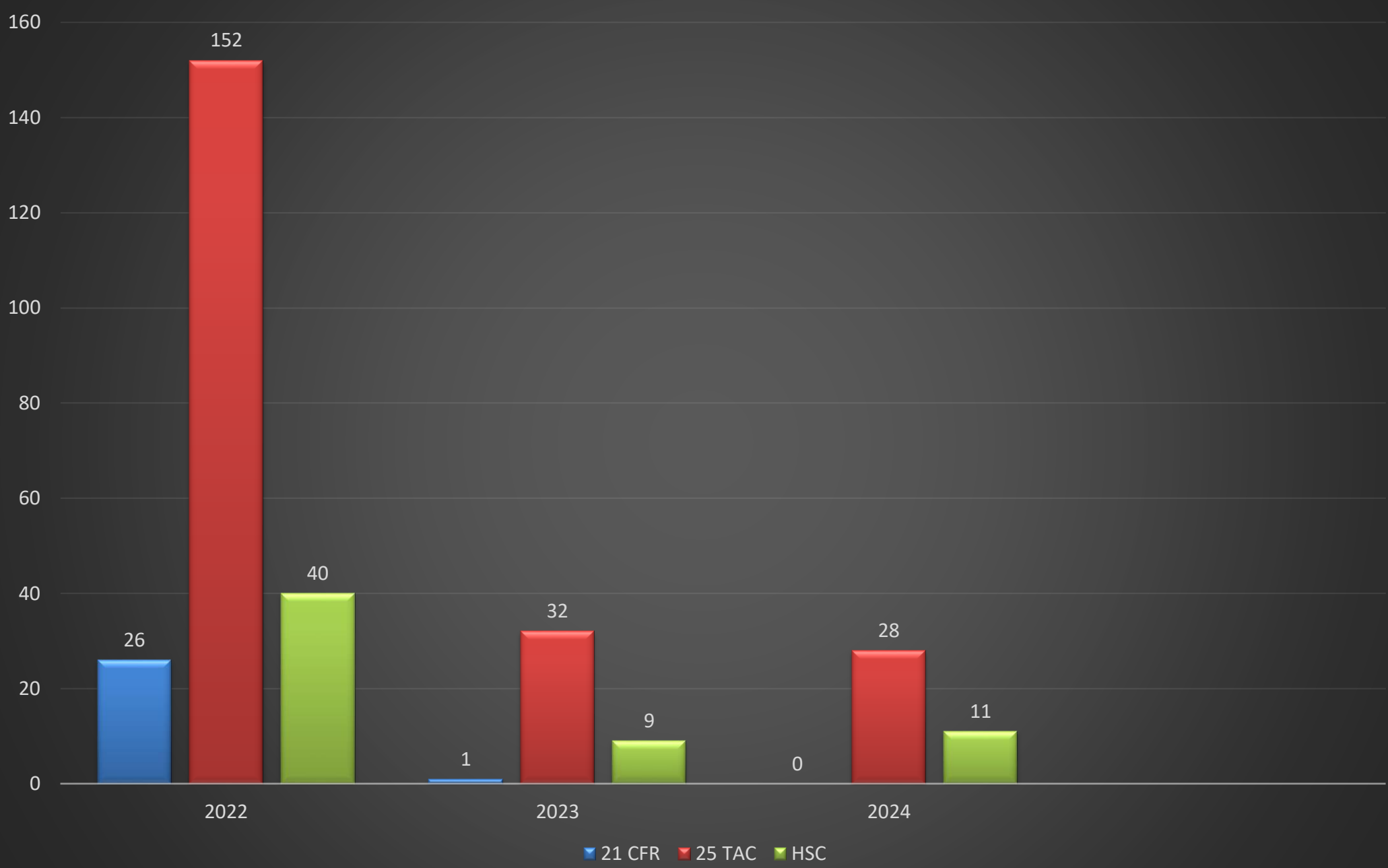
Texas Department of State Health Services

# Citations for FY22, FY23, FY24



Texas Department of State Health Services

# Citations type per year



Texas Department of State Health Services

# Referrals

## AG Referral for Collection

**FY22 – 29**

**FY23- 24**

**FY24- 2**

## Injunctive Relief

**FY22- 0**

**FY23-0**

**FY24-2**



For more information regarding Compliance Consumer Safety policies and protocols, please click on the link below:

[Compliance Section - Consumer Safety Branch Procedure Manual.pdf - All Documents \(sharepoint.com\)](#)



**TEXAS**  
Health and Human  
Services

Texas Department of State  
Health Services

# Thank You



**TEXAS**  
Health and Human  
Services

Texas Department of State  
Health Services