



**2024 DSHS Arbovirus Activity Report  
Week #44 (ending November 2, 2024)  
Report Date: November 5, 2024**

**Table 1. 2024 Arbovirus Activity Summary, Texas, Week 44**

Arbovirus	Mosquito Pools	Avian	Veterinary	Sentinel Chicken	Human					
					Febrile Illness	Neurologic Illness	Severe Dengue	TOTAL (HUMAN)	Deaths	PVD <sup>2</sup>
California Serogroup <sup>1</sup>								0		
Chikungunya					11			11		
Dengue					80		6	86	1	
Eastern Equine Encephalitis			2					0		
St. Louis Encephalitis	8							0		
West Nile	3282	37	16	13	38	86		124	21	92
Zika								1		
<b>TOTAL REPORTS</b>	<b>3290</b>	<b>37</b>	<b>18</b>	<b>13</b>	<b>129</b>	<b>86</b>	<b>6</b>	<b>222</b>	<b>22</b>	<b>92</b>

<sup>1</sup>California Serogroup includes California encephalitis, Jamestown Canyon, Keystone, La Crosse, snowshoe hare, and trivittatus viruses.

<sup>2</sup>PVD - Presumptive viremic blood donors are people who had no symptoms at the time of donating blood through a blood collection agency, but whose blood tested positive when screened for the presence of West Nile virus or Zika virus. Unless they meet the case reporting criteria, they are not counted as a case for official reporting purposes and are not included in the "Total (HUMAN)" column.

Note: Human mortality from arboviral conditions is aggregated and reported monthly once documentation has been received and verified.

For more detailed information about West Nile virus, including past weekly and annual reports, please visit <https://www.dshs.texas.gov/mosquito-borne-diseases/dshs-arbovirus-weekly-activity-reports>

For more detailed information about Zika, please visit <http://www.texaszika.org/>

Please note that arbovirus weekly reports are weekly snapshots of preliminary DSHS data and may change at any time due to quality assurance procedures. The final weekly report of each year is not complete data for the year and should not be used to draw conclusions regarding annual activity. Refer to our annual summary reports for finalized, complete data or contact [wv@dshtexas.gov](mailto:wv@dshtexas.gov) to request additional data or with any questions.

**Table 2. 2024 Aedes-Associated Arbovirus Activity by County†, Week 44**

County	CHIKV*		DENV*		ZIKV*		
	M	H	M	H	M	H	PVD
Bexar		1		5			
Brazoria				1			
Cameron				1			
Collin		4		9			
Cooke				1			
Dallas		1		9			
Denton				6			
El Paso				4			
Fort Bend		3		5			
Grayson				1			
Hays				2			
Hidalgo				2			
Kaufman				1			
Maverick				2			
McCulloch				1			
McMullen				1			
Mills				1			
Montgomery				6			
Parker				1			
Rains				1			
Smith				1			
Tarrant		1		5			
Taylor				1			
Titus				1			
Tom Green				2			
Travis				11			
Val Verde				2			
Victoria				1			
Williamson		1		2			
Total Number of Reports	0	11	0	86	0	1	0

M- mosquito H- human PVD- Presumptive viremic blood donors

CHIKV - Chikungunya Virus

DENV - Dengue Virus

ZIKV - Zika Virus

\*All reported cases are imported.

†County level data is not reported for conditions with <5 cases reported in a year.

**Table 3. 2024 Other Arbovirus Activity by County†, Week 44**

County	CAL		EEEV				SLEV			WNV								
	M	H	M	V	SC	H	M	SC	H	M	A	V	SC	H				
														WNF	WNND	PVD‡	TOTAL	
Armstrong										0		1						0
Bell										46						1		1
Bexar										45				1	1	4		2
Bowie										0					1			1
Brazoria										7						1		0
Brazos										27								0
Briscoe										0		1						0
Brooks										0		1						0
Burleson										1								0
Cameron										1								0
Clay										0					1			1
Collin										99					4	5		4
Comal										0						1		0
Cooke										8		1		1				1
Crosby										1								0
Dallam										0						1		0
Dallas										699		1		5	5	6		10
Denton										82				1	5	4		6
Eastland										0		1						0
Ector										0						1		0
El Paso								2		4				1				1
Ellis										48						2		0
Erath										0		2						0
Floyd										1								0
Fort Bend										35					2			2
Galveston										3			13			2		0
Grayson										0		1						0
Grimes										3								0
Hale										1								0
Harris										686	35			3	16	25		19
Haskell										0		1						0
Hays										9				2				2
Henderson										0					1			1
Hidalgo										0				1	1			2
Hood										0					1	1		1
Hopkins										0		1						0
Houston				2						0								0
Hunt										19								0

Jefferson										22						1	0
Jim Wells										19						1	0
Johnson										82		1				2	0
Kaufman										4						1	0
King										0	1						0
Kleberg										6							0
Leon										1							0
Lubbock							6			55		1			2	2	2
Lynn										0						1	0
Martin										0				1			1
McLennan										0		1		1	3	2	4
Midland										23				1		1	1
Moore										0						1	0
Montague										0				1			1
Montgomery										265				2	7	15	9
Nueces										20							0
Orange										18						2	0
Parker										0					1		1
Potter										3							0
Randall										3		1				1	0
Rockwall										4							0
San Patricio										5							0
Smith										0	1						0
Tarrant										706		1		11	22	4	33
Taylor										1							0
Terry										0					1		1
Travis										101				3	1	4	4
Webb										8							0
Walker										0				1	1		2
Wichita										43					8	1	8
Williamson										68				2			2
Young										0					1		1
Total Number of Reports	0	0	0	2	0	0	8	0	0	3282	37	16	13	38	86	92	124

M - mosquito A-avian V-veterinary SC- sentinel chicken H- human WNF - West Nile Fever WNND - West Nile Neuroinvasive Disease

CAL - California Serogroup Viruses

EEEV - Eastern Equine Encephalitis Virus

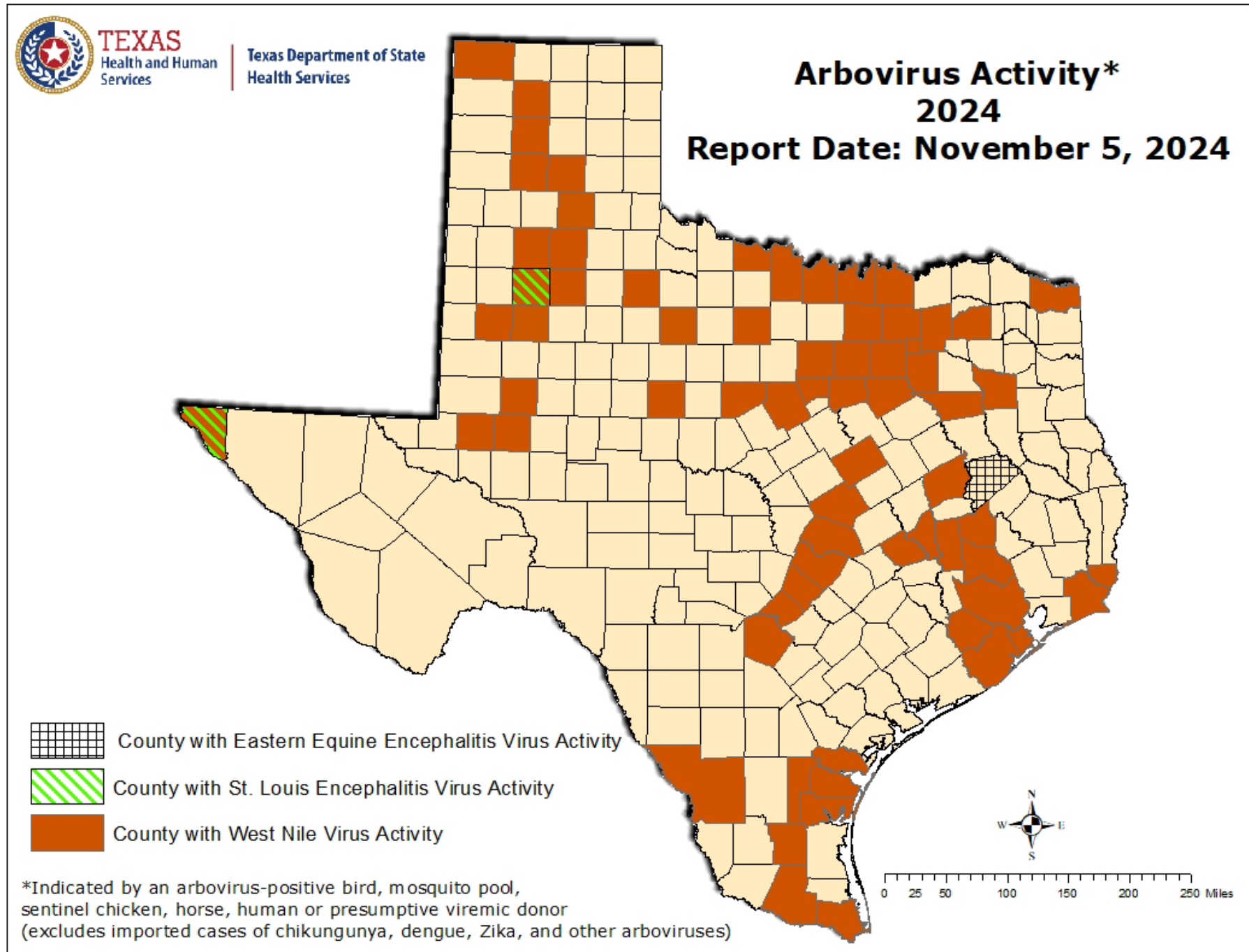
SLEV - St. Louis Encephalitis Virus

WNV - West Nile Virus

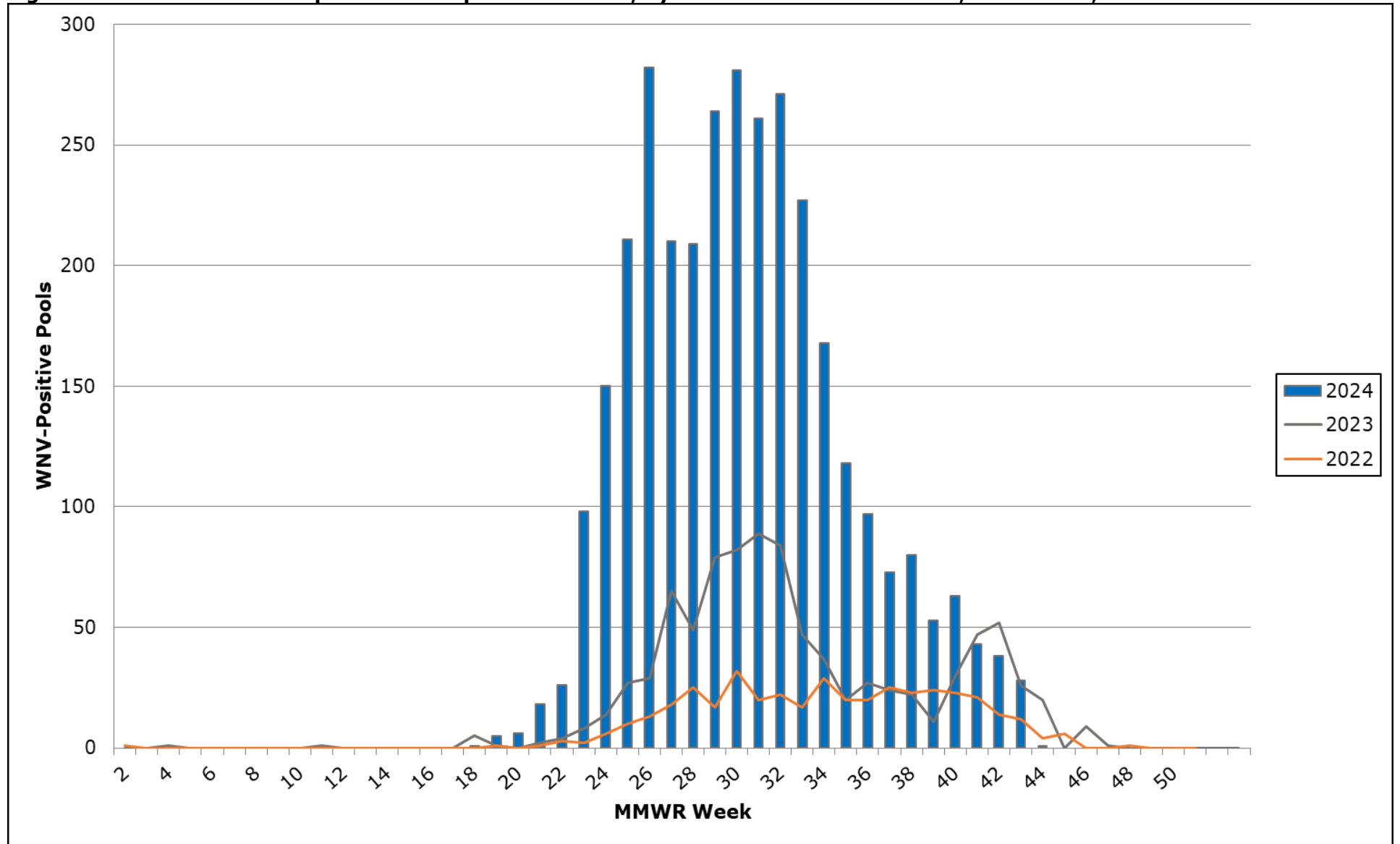
†County level data is not reported for conditions with <5 cases reported in a year.

‡PVDs are not included in the "Total" column.

Figure 1. Texas Counties Reporting Arbovirus Activity, Week 44



**Figure 2. WNV-Positive Mosquito Pools Reported in Texas, by MMWR Week of Collection, 2022-2024, Week 44**



**Figure 3. Human Cases of West Nile Virus Reported in Texas, by MMWR Week of Onset, 2022-2024, Week 44**

