

Texas Reportable Conditions Reporting Process

Frequently Asked Questions

How Can I Tell What Conditions Need to be Reported?

The **Texas Notifiable Conditions List**, which identifies the conditions that must be reported to the DSHS, and their reporting time frames is available online [here](#). Or scan the QR code at right.



2024 Texas Notifiable
Conditions List

Reporting Time Frames

- 1. Report Immediately:** Call 1-800-705-8868
- 2. Report within 1 workday:** Phone or Fax Report Form to DSHS*
- 3. Report within 1 week:** Fax or Mail Report Form to DSHS*

*May also be submitted to DSHS as an Electronic Lab Report.

Should Notifiable Condition Reports be Sent to the DSHS Laboratory?

No. Reports must be sent to the disease reporting contact of **the patient's county of residence**. Always call 1-800-705-8868 to report "call immediately" conditions.

Fax or mail a completed Infectious Disease Report Form (EPI-1 or EPI-2) to the health department contact listed for that county.

- Notifiable Conditions Reporting contacts by county available online at <http://www.dshs.state.tx.us/idcu/investigation/conditions/contacts/>.
- EPI Reporting Forms available at <https://www.dshs.texas.gov/notifiable-conditions/reporting-forms>.

NOTE: EPI report forms are used for most reportable conditions. Refer to the reporting forms web link above to obtain reporting forms and confirm the process for chickenpox and HIV/STDs reporting.

What Type of Specimens Must be Submitted to the DSHS Laboratory?

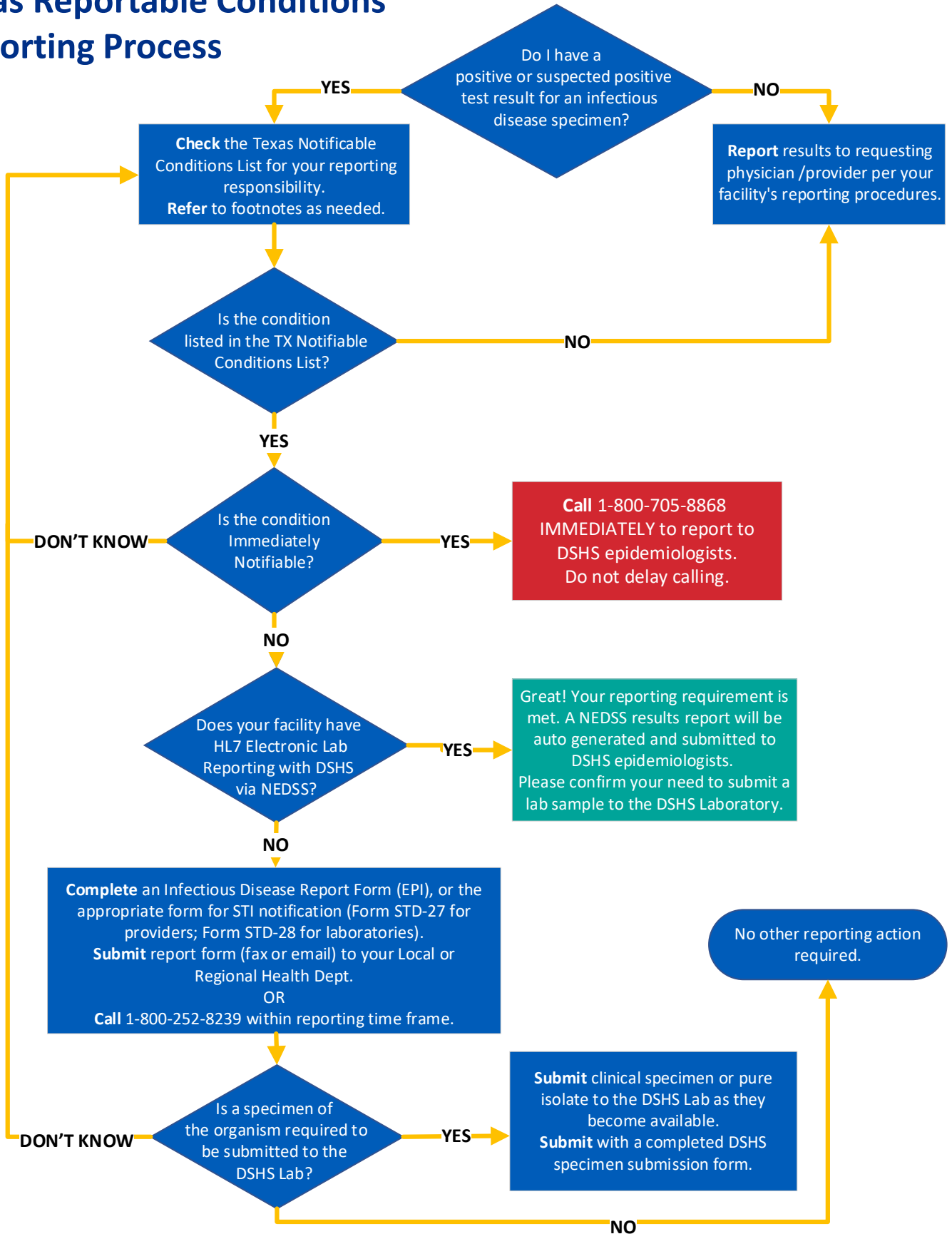
Submit **pure cultures** (or clinical specimens) to the DSHS Laboratory as they become available. (Footnote 3 of the Texas Notifiable Conditions List identifies these specimens).

- All specimens must be submitted with a **completed** DSHS specimen submission form.
- Providers must have a DSHS Submitter ID Account.
- Report forms or lab results are **not acceptable replacements** for DSHS submission forms.
- For *Haemophilus*, only isolates from normally sterile sites are accepted (e.g., blood or CSF).

Questions About . . .

Electronic Lab Reporting:	Visit Electronic Laboratory Reporting for HL7 Submitters Texas DSHS
Specimen Submissions:	(512) 776-7598 or 1-888-963-7111 ext. 7578 (toll free)
Submitter Accounts or Submission Forms:	(512) 776-7578 or LabInfo@dshs.texas.gov

Texas Reportable Conditions Reporting Process



Required TX Notifiable Specimens for Submission to DSHS Laboratory

Required Isolates or Clinical Specimens	Submission Form	Reporting/Specimen Submission and Submission Form Tips
<i>Bacillus anthracis</i> isolates	G-27A	<ul style="list-style-type: none"> • Call Immediately: 1-800-705-8868 • Must be shipped as Category A. • Select <i>Bacillus anthracis</i> in Section 5 of G-27A.
<i>Bacillus cereus</i> isolates that may contain anthrax toxin genes from patients with severe disease or death	G-27A	<ul style="list-style-type: none"> • Call Immediately: 1-800-705-8868 • Select "Bacillus cereus suspected of containing anthrax genes" in Section 5 of G-27A.
<i>Clostridium botulinum</i> isolates	G-27A	<ul style="list-style-type: none"> • Call Immediately: 1-800-705-8868 • Must be shipped as Category A. • Select appropriate boxes in Sections 3 and 4 of G-27A.
<i>Brucella</i> species isolates	G-27A	<ul style="list-style-type: none"> • Notify DSHS Within 1 Workday. • Must be shipped as Category A. • Select <i>Brucella</i> spp. in Section 5 of G-27A.
<i>Candida auris</i> isolates	G-2E	<ul style="list-style-type: none"> • Notify DSHS Within 1 Workday. • Select "Isolates" in Section 4, Box 1 • Select "Candida Identification by MALDI" in Section 4, Box 1.
<i>Corynebacterium diphtheriae</i> isolates	G-2B	<ul style="list-style-type: none"> • Call Immediately: 1-800-705-8868 • Indicate in Section 2 that specimen is associated with an outbreak or for surveillance, per epidemiologist guidance. • Select <i>Corynebacterium diphtheriae</i> in Section 4.1 of G-2B.
<i>Francisella tularensis</i> isolates	G-27A	<ul style="list-style-type: none"> • Call Immediately: 1-800-705-8868 • Must be shipped as Category A. • Select <i>Francisella tularensis</i> in Section 5 of G-27A.
<i>Haemophilus influenzae</i> isolates (invasive) from normally sterile sites in children younger than 5 years old	G-2B	<ul style="list-style-type: none"> • Submit invasive specimens from normally sterile sites in children younger than 5 years only. (e.g., blood or CSF) • Indicate in Section 2 that specimen is associated with an outbreak or is for surveillance. • Select <i>Haemophilus influenzae</i> in Section 4.1 of G-2B.
<i>Listeria monocytogenes</i> isolates	G-2B	<ul style="list-style-type: none"> • Indicate in Section 2 of G-2B that specimen is associated with an outbreak/for surveillance. • Select <i>Listeria</i> in Section 4.1 of G-2B.
<i>Mycobacterium tuberculosis</i> complex, isolates of all complex members	G-MYCO	<ul style="list-style-type: none"> • Notify DSHS Within 1 Workday. • Must be submitted as Category A. • Check the "MTB Genotyping Only/for Compliance" option in Section 5 of G-MYCO.
<i>Neisseria meningitidis</i> isolates from normally sterile sites or purpuric lesions	G-2B	<ul style="list-style-type: none"> • Call Immediately: 1-800-705-8868 • Indicate in Section 2 of G-2B that specimen is associated with an outbreak or is for surveillance. • Select <i>Neisseria meningitidis</i> in Section 4.1 of G-2B.
<i>Salmonella</i> species isolates, including <i>Salmonella</i> positive specimens (by CIDT)	G-2B	<ul style="list-style-type: none"> • Indicate in Section 2 of G-2B that specimen is associated with an outbreak or is for surveillance. • Select <i>Salmonella</i> in Section 4.1 of G-2B.
Shiga toxin-producing <i>Escherichia coli</i> (All <i>E. coli</i> O157:H7 isolates and any <i>E. coli</i> isolates/specimens that demonstrate Shiga toxin activity)	G-2B	<ul style="list-style-type: none"> • Must be shipped as Category A. • Indicate in Section 2 of G-2B that specimen is associated with an outbreak or is for surveillance. • Select "Shiga toxin-producing <i>Escherichia coli</i>" in Section 4.1.
<i>Staphylococcus aureus</i> with a vancomycin MIC greater than 2µg/mL (VISA and VRSA)	G-2B	<ul style="list-style-type: none"> • Indicate in Section 2 of G-2B that specimen is associated with an outbreak or is for surveillance. • Select <i>Staphylococcus aureus</i> in Section 4.1 of G-2B.
<i>Streptococcus pneumoniae</i> isolates from normally sterile sites in children younger than 5 years old	G-2B	<ul style="list-style-type: none"> • Indicate in Section 2 of G-2B that specimen is associated with an outbreak or is for surveillance. • Select <i>Streptococcus pneumoniae</i> in Section 4.1 of G-2B.
<i>Vibrio</i> species isolates; also submit <i>Vibrio</i> CIDT positive specimens.	G-2B	<ul style="list-style-type: none"> • Notify DSHS Within 1 Workday. • Indicate in Section 2 of G-2B that specimen is associated with an outbreak or is for surveillance. • Select <i>Vibrio</i> sp. or <i>Vibrio cholera</i> in Section 4.1 of G-2B.
<i>Yersinia pestis</i> isolates	G-27A	<ul style="list-style-type: none"> • Call Immediately: 1-800-705-8868 • Must be shipped as Category A. • Select <i>Yersinia pestis</i> in Section 5 of G-27A.