

Texas Influenza Surveillance Report 2015–2016 Season/2016 MMWR Week 08

(Feb. 21, 2016 – Feb. 27, 2016)

Report produced on 3/04/2016

Summary

Influenza activity remains elevated across the state even though there was a small decrease in activity. Compared to the previous week, the percentage of specimens positive for influenza and the percentage of patient visits due to influenza-like illness (ILI) somewhat decreased. It is too early to tell if influenza activity has peaked for the season. Five ILI/influenza-associated outbreaks and no influenza-associated pediatric deaths were reported. In addition to flu, other respiratory viruses were detected in Texas during week 08.

Table 1: Summary of Texas Influenza (Flu) and Influenza-like Illness (ILI) Activity for the Current Week

Texas Surveillance Component	Change from Previous Week	Current Week	Previous Week [†]	Page of Report
Statewide influenza activity level reported to CDC (geographic spread of influenza)	No change	Widespread	Widespread	--
Statewide ILINet Activity Indicator assigned by CDC (intensity of influenza-like illness)	Decreased	Low	High	--
Percentage of specimens positive for influenza	▼ 1.52%	19.17%	20.69% [†]	1
Percentage of visits due to ILI (ILINet)	▼ 1.72%	5.66%	7.38% [†]	3
Number of regions reporting increased flu/ILI activity	▼ 2	4	6	5
Number of regions reporting decreased flu/ILI activity	No change	0	0	5
Number of variant/novel influenza infections	No change	0	0	5
Number of ILI/influenza outbreaks	▲ 3	5	2	5
Number of Pneumonia and Influenza (P&I) Deaths	▲ 400	400	0	6
Number of pediatric influenza deaths	No New Cases Reported	0	0	7

[†]Data displayed have been updated since last week's flu report with any new reports received.

Laboratory Results

Influenza

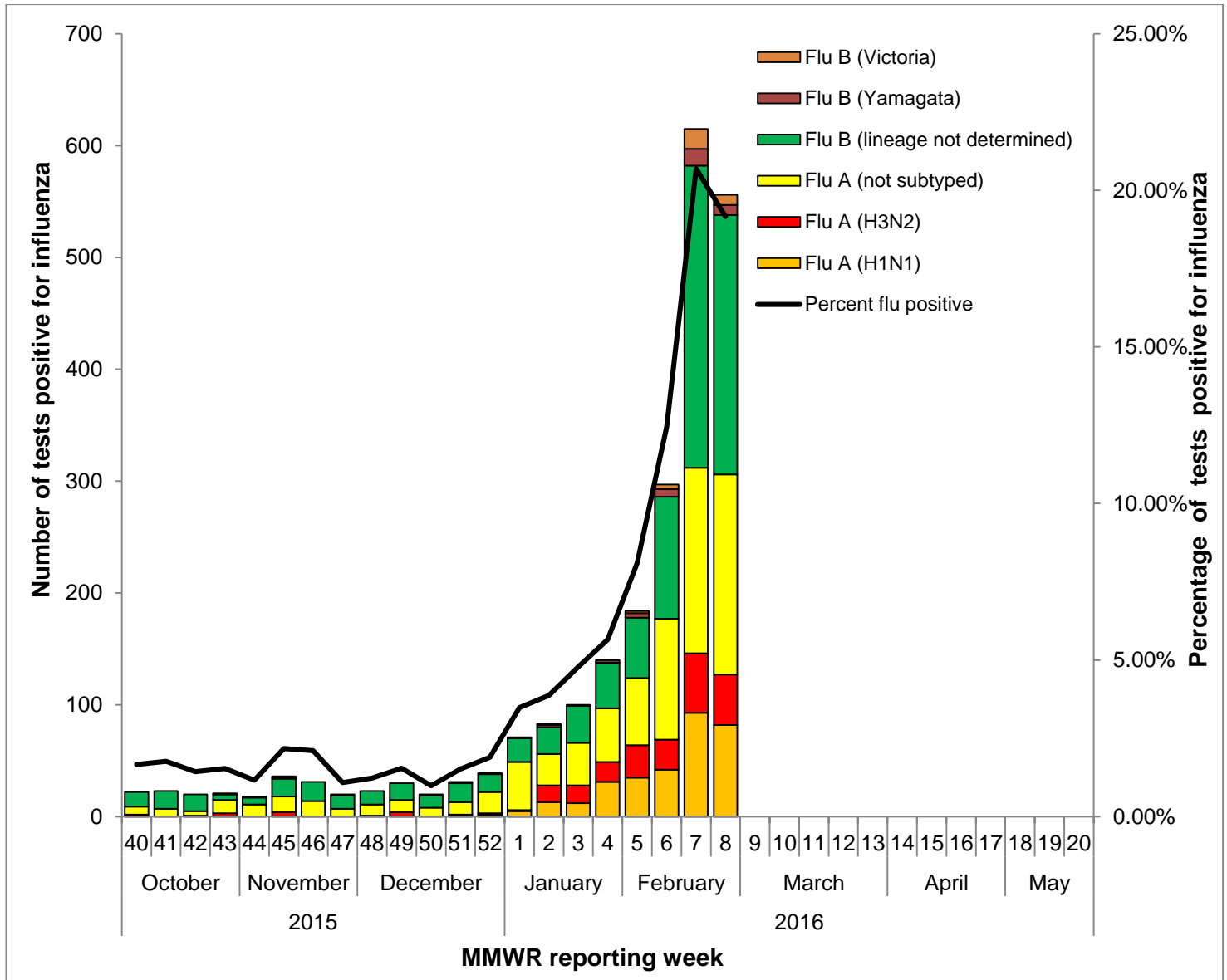
Hospital laboratories across Texas voluntarily report influenza tests (antigen, culture, and PCR) to the National Respiratory and Enteric Virus Surveillance System (NREVSS). Providers throughout Texas also submit specimens for influenza testing (PCR) to Texas public health laboratories, including the Texas Department of State Health Services (DSHS) laboratory in Austin and the nine Texas Laboratory Response Network (LRN) laboratories. The results reported by these labs are summarized below. Additional influenza test results (rapid tests, culture, PCR) were reported from providers and public health departments throughout the state (see county map at the end of this report).

Table 2: Influenza Testing Performed by Texas Laboratories for the Current Week

	Week 08	Season to Date
Number of labs reporting flu tests	19	
Number of specimens tested	2901	41082
Number of positive specimens (%) [†]	556 (19.17%)	2380 (5.79%)
Percentage of total tests that were antigen detection tests	46.78%	
Positive specimens by type/subtype/lineage [n (%)]		
Influenza A	306 (55.04%)	1342 (56.39%)
Subtyping performed	127 (41.50%)	537 (40.01%)
A (H1N1)	82 (64.57%)	318 (59.22%)
A (H3N2)	45 (35.43%)	219 (40.78%)
Subtyping not performed	179 (58.50%)	805 (59.99%)
Influenza B	250 (44.96%)	1038 (43.61%)
Lineage testing performed	18 (7.20%)	84 (8.09%)
B/Victoria	9 (50.00%)	40 (47.62%)
B/Yamagata	9 (50.00%)	44 (52.38%)
Lineage testing not performed	232 (92.80%)	954 (91.91%)

[†]Laboratory data in 2015-2016 season reports may not be comparable to reports from previous seasons because of the inclusion of DSHS and LRN laboratory data for the current season.

Figure 1: Number and Percentage of Tests (Antigen, Culture, PCR) Positive for Influenza by Type, Subtype, and Lineage Reported by Texas Laboratories, 2015–2016 Season



Other Respiratory Viruses

The NREVSS system collects information on a variety of respiratory viruses in addition to influenza including parainfluenza virus, respiratory syncytial virus (RSV), rhinovirus, human metapneumovirus (HMPV), seasonal coronavirus, and respiratory adenovirus. The results for the current week are summarized below.

Table 3: Non-Influenza Respiratory Virus Testing Performed by Texas NREVSS Laboratories for the Current Week

Virus	Number of Laboratories Testing	Tests Performed	Positive Tests	Percentage of Tests Positive
Adenovirus (respiratory)	7	1036	52	5.02%
HMPV	7	1023	66	6.45%
Parainfluenza virus	7	1033	10	0.97%
Rhinovirus	6	865	176	20.35%
RSV ^{†^}	11	1613	236	14.63%
Seasonal coronavirus (does not include MERS-CoV)	5	856	46	5.37%

[†]RSV tests displayed in the table are antigen detection tests only. Some non-NREVSS reporters also contribute to the RSV data.

[^]Numbers and percentage may differ from the weekly RSV report. The weekly RSV report may be accessed at <https://www.dshs.state.tx.us/RSV/disease/rsv-Data.aspx>.

Antigenic Characterization

Since October 04, 2015, CDC has reported antigenic characterization results from five influenza A (H1N1) viruses, four influenza A (H3N2) viruses and six influenza B viruses received from the Texas Department of State Health Services (DSHS) Laboratory. The DSHS Laboratory sends a representative sample of influenza viruses to the CDC throughout the flu season.

Influenza A (H1N1) [5]

- Five (100.0%) viruses were related to A/California/07/2009. This virus strain was included in the 2015-2016 influenza vaccine for the Northern Hemisphere.

Influenza A (H3N2) [4]

- Four (100.0%) viruses were related to A/Switzerland/9715293/2013, the influenza A (H3N2) component of the 2015-2016 Northern Hemisphere influenza vaccine.

Influenza B [6]

- Yamagata lineage [5]: Five (83.3%) influenza B/Yamagata-lineage viruses have been characterized from Texas. A B/Phuket/3073/2013-like virus, which belongs to the B/Yamagata lineage, is included as an influenza B component of the 2015-2016 Northern Hemisphere trivalent and quadrivalent influenza vaccines.
- Victoria lineage [1]: One (16.7%) influenza B/Victoria-lineage virus has been characterized as B/Brisbane/60/2008-like, which is included as an influenza B component of the 2015-2016 Northern Hemisphere quadrivalent influenza vaccine

Antiviral Resistance

No antiviral resistance testing data for Texas specimens are available at this time.

U.S. Outpatient Influenza-like Illness Surveillance Network (ILINet)

Table 4: Texas ILINet Reporting and Patient Visit Summary for the Current Week

	Week 08
Number of providers reporting†	71
Number of providers reporting patient visits	69
Number (%) of providers with at least one ILI case	59 (85.51%)
Percentage of all visits due to ILI	5.66%
Texas ILINet baseline‡, 2015–2016	6.32%

†Reporting providers include both ILINet and RVSP providers.

‡The baseline is the mean percentage of patient visits for ILI during non-influenza weeks for the previous three seasons plus two standard deviations. A “non-influenza week” is defined as a week that accounted for less than 2% of the season’s total number of specimens that tested positive for influenza.

Table 5: Percentage of Visits for Influenza-like Illness Reported by Texas ILINet Providers (as of 3/3/2016 11:20 AM)

Week	Providers Reporting	Number of ILI Cases by Age Group (Years)					Total ILI (all ages)	Total Patients	% ILI
		0-4	5-24	25-49	50-64	65+			
201540	131	204	395	350	197	125	1271	31446	4.04%
201541	127	212	422	304	141	92	1171	29680	3.95%
201542	127	245	467	392	187	137	1428	31123	4.59%
201543	129	250	500	352	201	150	1453	31953	4.55%
201544	131	251	437	322	213	160	1383	31979	4.32%
201545	123	248	500	296	122	41	1207	29029	4.16%
201546	128	237	530	376	224	186	1553	31686	4.90%
201547	127	206	377	339	182	114	1218	22193	5.49%
201548	127	277	500	478	290	249	1794	31214	5.75%
201549	124	276	451	410	300	218	1655	28634	5.78%
201550	126	320	410	486	279	219	1714	28709	5.97%
201551	125	193	333	418	222	175	1341	21334	6.29%
201552	124	213	294	488	295	178	1468	21567	6.81%
201601	124	201	364	511	315	247	1638	26827	6.11%
201602	120	226	398	321	150	69	1164	25210	4.62%
201603	125	258	441	428	221	214	1562	28490	5.48%
201604	124	267	611	449	306	200	1833	29636	6.19%
201605	124	275	574	450	285	191	1775	29311	6.06%
201606	119	262	658	591	324	210	2045	29701	6.89%

Week	Providers Reporting	Number of ILI Cases by Age Group (Years)					Total ILI (all ages)	Total Patients	% ILI
		0-4	5-24	25-49	50-64	65+			
201607	117	287	700	610	352	238	2187	29618	7.38%
201608	71	230	389	197	181	185	1182	20892	5.66%

Figure 2: Percentage of Visits Due to Influenza-like Illness Reported by Texas ILINet Participants, 2015–2016 Season

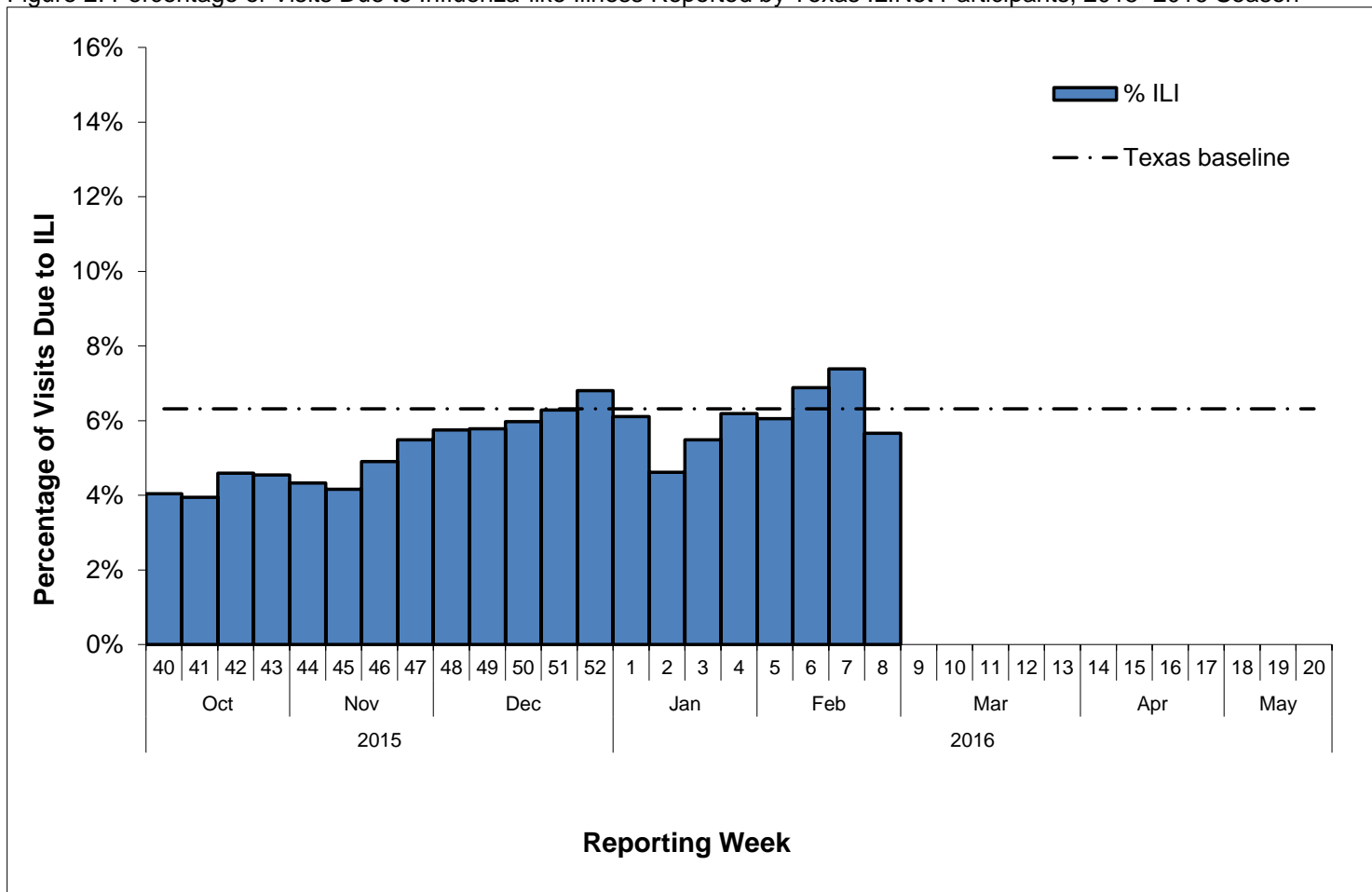
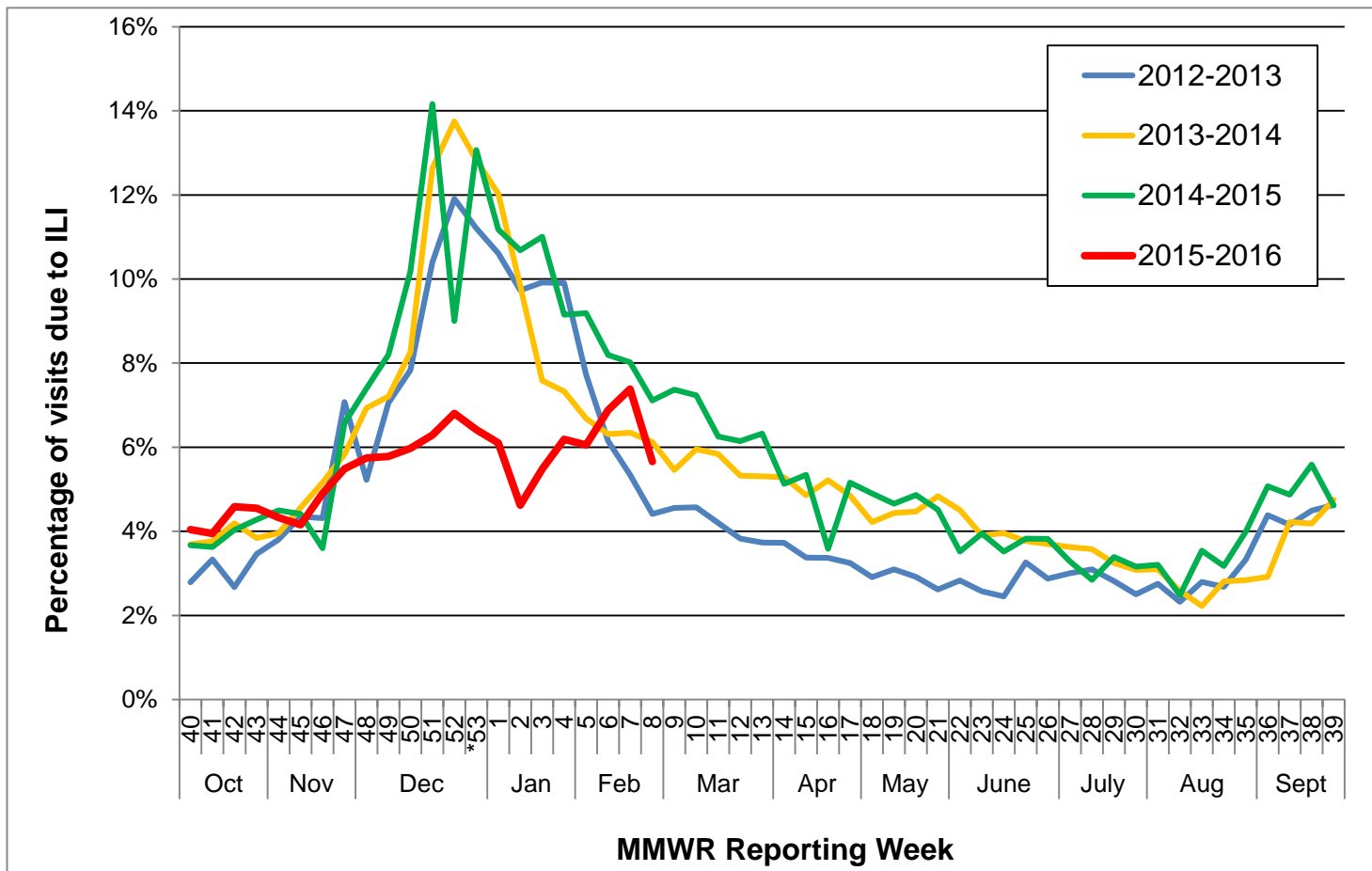


Figure 3: Percentage of Visits Due to Influenza-like Illness Reported by Texas ILINet Participants, 2012–2016 Seasons



*There was a week 53 in the 2014-2015 influenza season, but there is not a week 53 for the 2015-2016 influenza season or the other previous seasons; therefore the week 53 data point for those seasons is an average of week 52 and 1.

Reports from Health Service Regions

Reports were received from seven Health Service Regions (HSRs) during week 08.

Table 6: Influenza Activity Compared to Week 07 by Health Service Region (HSR)

Influenza Activity Comparison	Health Service Region (HSR)
Increased	2/3, 6/5N, 9/10, and 11
Same	1, 7, and 8
Decreased	
Unsure	

Variant Influenza Viruses

No variant or novel influenza viruses have been detected in Texas in 2015 or 2016.

Institutional Outbreaks and School Closures

During week 08, four influenza-associated outbreaks were reported in schools located in HSR 6/5S. One influenza-associated outbreak in a school located in HSR /65S involves at least 181 students. Of the 181 students associated with the outbreak, 95 students were sent home from school with ILI and 86 students were reported to have influenza (unknown type) from 2/18/16 through 2/26/16. When the outbreak first started, the students associated with the outbreak belonged to the same kindergarten class. A second reported influenza-associated outbreak in a school located in HSR 6/5S involves at least 68 students. Of the 68 students involved with this outbreak, 37 students were sent home from school with ILI and 30 students were reported to have influenza (unknown type) from 2/18/2016 through 2/26/16. There was one student that tested positive for influenza A via rapid test. A third reported influenza-associated outbreak in a school located in HSR 6/5S involves at least 18 students. Six students involved in this outbreak had ILI, two students were positive for influenza A via rapid test and ten students were positive for influenza B via rapid test. The final reported influenza-associated outbreak in a school located in HSR 6/5S involves at least 16 people. Eleven people had ILI, one

person was positive for influenza A via rapid test and four people were positive for influenza (unknown type) via rapid test. All influenza-associated school outbreaks are currently ongoing and being investigated.

An influenza-associated outbreak in a long-term care facility located in HSR 2/3 was also reported during week 08. This outbreak included nine staff and 29 residents that either had ILI or were diagnosed with influenza. One resident was positive for influenza A 2009 (H1N1) by PCR. Tamiflu prophylaxis was given at the long-term care facility. The outbreak is over as no new residents or staff have reported having any symptoms as of 2/20/16.

No school closures were reported during week 08.

TX P&I Mortality Surveillance Data

Pneumonia and influenza (P&I) deaths are attained from death certificates of Texas residents whose underlying or contributing cause(s) of death on the death certificate is reported as pneumonia or influenza. P&I deaths are identified based on ICD-10 multiple cause of death codes. In particular, P&I deaths are based on ICD-10 pneumonia and influenza mortality codes.

Two thousand eight hundred twenty-seven P&I deaths have been reported in Texas during the 2015-2016 influenza season.

Table 7: Texas P&I Deaths Occurring Oct. 04, 2015-Mar. 02, 2016* by Age

Age Category (years)	Number of P&I Deaths ⁺	Mortality Rate (per 100,000)
0 - 4	<10	0.44
5 - 17	<10	0.06
18 - 49	142	1.14
50 - 64	446	8.97
65 +	2227	66.18
Overall	2827	10.01

*NOTE: Data are provisional and subject to change, errors, and duplicates

* If the cell count is less than 10, the number of P&I deaths is suppressed and <10 is written in the cell.

Table 8: Texas P&I Deaths Occurring Oct. 04, 2015-Mar. 02, 2016* by Health Service Region (HSR)

HSR	Number of P&I Deaths	Mortality Rate (per 100,000)
1	126	14.01
2/3	774	9.48
4/5N	209	13.16
6/5S	612	8.32
7	354	10.38
8	305	10.43
9/10	180	11.76
11	267	11.26
Overall	2827	10.01

*NOTE: Data are provisional and subject to change, errors, and duplicates

Influenza-Associated Pediatric Mortality

No influenza-associated pediatric deaths were reported during week 08.

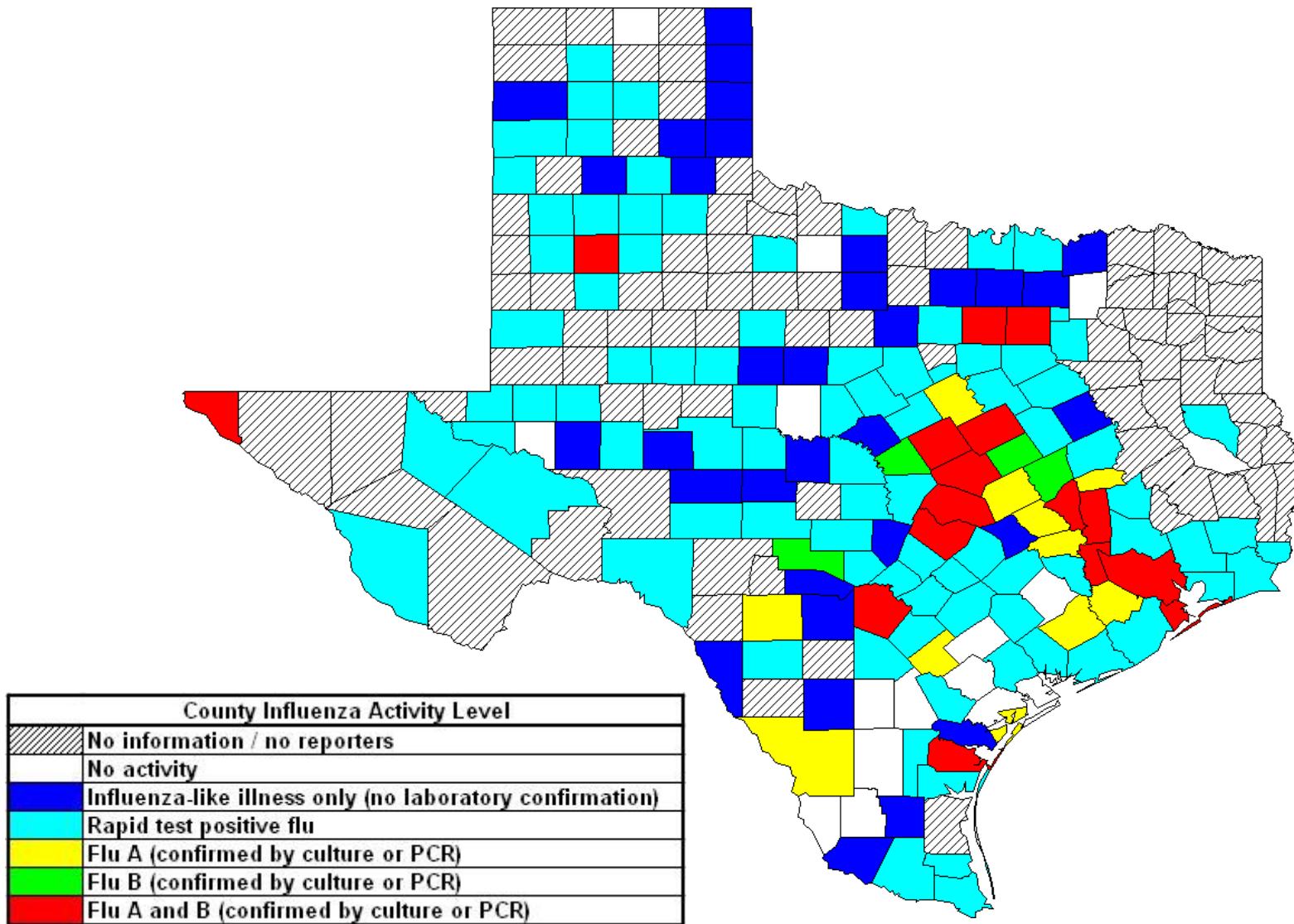
No influenza-associated pediatric deaths have been reported in Texas during the 2015-2016 influenza season. Cases of influenza-associated pediatric mortality (children <18 years of age) are reportable year-round and by law in Texas.

Table 9: Influenza-Associated Pediatric Deaths Reported in Texas during the 2015–2016 Season

Month of Pediatric Death	Influenza A (H1N1)	Influenza A (H3N2)	Influenza A (Not Subtyped)	Influenza B	Influenza, Not Typed / Not Differentiated	Influenza virus co-infection: A (not subtyped) and B	Total, All Influenza Types / Subtypes
2015							
October	0	0	0	0	0	0	0
November	0	0	0	0	0	0	0
December	0	0	0	0	0	0	0
2016							
January	0	0	0	0	0	0	0
February	0	0	0	0	0	0	0
Total	0	0	0	0	0	0	0

Statewide Influenza Activity Map

Figure 4: Texas Map Displaying the Highest Level of Influenza or ILI Activity Reported by County for the Week Ending Feb. 27, 2016 (MMWR Week 08)



Please note: The majority of influenza cases are not reportable by law in Texas. This map contains data from sentinel sites and only displays influenza and ILI cases that were reported to public health. Positive laboratory results are reported according to specimen collection date, or date received in the laboratory if the former is unknown.

Texas Influenza Surveillance Components and Measures

Activity codes (see <http://www.cdc.gov/flu/weekly/overview.htm>)

Statewide influenza activity level

A code reported weekly by states and territories to CDC indicating the geographic spread of influenza in the state. Levels are no activity, sporadic, local, regional, and widespread.

ILINet Activity Indicator

A statewide level of influenza-like illness intensity (on a scale of 1-10, with 1 being the lowest level) assigned to each state weekly by CDC based on data reported through ILINet.

Morbidity

Novel/variant influenza

Thorough investigations are performed on all cases of novel/variant influenza. *This condition is reportable by law in Texas.*

Texas ILINet

Providers voluntarily report weekly to CDC's ILINet system on the number of outpatient visits for ILI and total outpatient visits. Providers may submit up to 5 specimens per month for influenza testing. See <http://www.dshs.state.tx.us/idcu/disease/influenza/surveillance/ILINet/> for information on how to become an ILINet provider.

Respiratory Virus Surveillance Project (RVSP)

Providers report weekly to ILINet and submit specimens on the first 10 patients seen with ILI each week. Specimens are tested for a variety of respiratory viruses.

ILI activity

Non-ILINet providers report ILI or influenza data weekly to local or regional health departments.

Outbreaks

Healthcare, schools, and childcare facilities report ILI and influenza outbreaks to health departments in Texas. *This condition is reportable by law in Texas.*

Mortality

Pneumonia and Influenza (P&I) Mortality Surveillance

The DSHS Vital Statistics Unit collects death certificate information for all deaths on Texas residents from various partners such as funeral homes and local registrars around the state. The death certificates are then sent to the National Center for Health Statistics (NCHS) where the cause of death and underlying causes of death on the death certificates are coded with ICD-10 mortality codes. Once death certificates are coded, the information is sent back to DSHS Center for Health Statistics (CHS). CHS produces a Weekly Pneumonia and Influenza (P&I) Death Report and sends it to the State Influenza Surveillance Coordinator for inclusion in the Texas Weekly Flu Report. P&I deaths are identified based on ICD-10 multiple cause of death codes, and in particular, pneumonia and influenza mortality codes. Delays inherent in death reporting and coding practices may cause the number of reported P&I deaths to vary considerably each week.

Influenza-associated pediatric deaths

Deaths that are associated with influenza in children < 18 years of age are reported to health departments in Texas. *This condition is reportable by law in Texas.* <http://www.dshs.state.tx.us/idcu/disease/IAPM/>

Laboratory

DSHS Austin laboratory

Providers voluntarily submit specimens to the DSHS Austin laboratory for influenza PCR testing throughout the season. Providers sign up for this program through their local health departments.

Laboratory Response Network (LRN) laboratories

Providers voluntarily submit specimens to one of the 9 Texas LRNs for influenza PCR testing throughout the season. Providers sign up for this program through their local health departments.

NREVSS

Laboratories voluntarily report influenza and other respiratory virus data weekly through the CDC's online NREVSS reporting system. **Laboratories sign up for this program by contacting DSHS.** <http://www.cdc.gov/surveillance/nrevss/>

Recommended Resources

Texas Department of State Health Services

DSHS influenza page: <http://www.texasflu.org/>

Influenza surveillance data and reports: <http://www.dshs.state.tx.us/idcu/disease/influenza/surveillance/>

Map of Texas Health Service Regions: <http://www.dshs.state.tx.us/regions/state.shtm>

Centers for Disease Control and Prevention

National FluView weekly flu report: <http://www.cdc.gov/flu/weekly/>

Variant and novel influenza viruses: <http://www.cdc.gov/flu/avianflu/index.htm>; <http://www.cdc.gov/flu/swineflu/index.htm>

Infection Control in Healthcare Facilities: <http://www.cdc.gov/flu/professionals/infectioncontrol/>

Seasonal Flu Information for Schools and Childcare Providers: <http://www.cdc.gov/flu/school/index.htm>

World Health Organization

Influenza page: <http://www.who.int/topics/influenza/en/>

Disease Outbreak News: <http://www.who.int/csr/don/en/>