

## Texas Influenza Summer Surveillance Report 2014–2015 Season/2015 MMWR Week 32

(August 09, 2015 – August 15, 2015)

Report produced on 8/21/2015

### Summary

Influenza activity remains low in Texas. The percentage of specimens positive for influenza and influenza-like illness (ILI) activity slightly decreased compared to last week. Influenza-like illness (ILI) activity remained below the 2014-2015 state ILINet baseline of 5.42%.

Table 1: Summary of Texas Influenza (Flu) and Influenza-like Illness (ILI) Activity for the Current Week

Texas Surveillance Component	Change from Previous Week	Current Week	Previous Week <sup>†</sup>	Page of Report
Statewide influenza activity level reported to CDC (geographic spread of influenza)	Not determined during summer	N/A	N/A	--
Statewide ILINet Activity Indicator assigned by CDC (intensity of influenza-like illness)	Not determined during summer	N/A	N/A	--
Percentage of specimens positive for influenza	▼0.51%	0.00%	0.51% <sup>†</sup>	1
Percentage of visits due to ILI (ILINet)	▼0.32%	2.95%	3.27% <sup>†</sup>	2
Number of regions reporting increased flu/ILI activity	▼1	0	1	4
Number of regions reporting decreased flu/ILI activity	No change	1	1	4
Number of variant/novel influenza infections	No change	0	0	4
Number of ILI/influenza outbreaks	No change	0	0	4
Number of pediatric influenza deaths	No New Cases Reported	0	0	4

<sup>†</sup>Data displayed have been updated since last week's flu report with any new reports received.

### Laboratory Results

#### Influenza

Hospital laboratories across Texas voluntarily report influenza tests (antigen, culture, and PCR) to the National Respiratory and Enteric Virus Surveillance System (NREVSS). Providers throughout Texas also submit specimens for influenza testing (PCR) to Texas public health laboratories, including the Texas Department of State Health Services (DSHS) state laboratory in Austin and the nine Texas Laboratory Response Network (LRN) laboratories. The results reported by Texas NREVSS participants and public health laboratories for the current week is summarized in the table below. Additional influenza test results (rapid tests, culture, PCR) and ILI activity were reported from providers and public health departments throughout the state (see county map at the end of this report).

Table 2: Influenza Testing Performed by Texas Laboratories for the Current Week

	Week 32
Number of labs reporting flu tests	8
Number of specimens tested	268
Number of positive specimens (%) <sup>†</sup>	0 (0.00%)
Percentage of total tests that were antigen detection tests	18.66%
<b>Positive specimens by type/subtype [n (%)]</b>	
<b>Influenza A</b>	<b>0 (0.00%)</b>
Subtyping performed	0 (0.00%)
A (H1N1)	0 (0.00%)
A (H3N2)	0 (0.00%)
Subtyping not performed	0 (0.00%)
<b>Influenza B</b>	<b>0 (0.00%)</b>

<sup>†</sup>Laboratory data in 2014-2015 season reports may not be comparable to reports from previous seasons because of the inclusion of DSHS and LRN laboratory data for the current season.

### Other Respiratory Viruses

The NREVSS system collects information on a variety of respiratory viruses in addition to influenza including parainfluenza virus, respiratory syncytial virus (RSV), rhinovirus, human metapneumovirus (HMPV), and respiratory adenovirus. The results for the current week are summarized below.

Table 3: Non-Influenza Respiratory Virus Testing Performed by Texas NREVSS Laboratories for the Current Week

Virus	Number of Laboratories Testing	Tests Performed	Positive Tests	Percentage of Tests Positive
Adenovirus (respiratory)	7	347	17	4.90%
HMPV	7	300	0	0.00%
Parainfluenza virus	7	336	7	2.08%
Rhinovirus	6	255	51	20.00%
RSV <sup>†^</sup>	9	348	4	1.15%

<sup>†</sup>RSV tests displayed in the table are antigen detection tests only. Some non-NREVSS reporters also contribute to the RSV data.

<sup>^</sup>Numbers and percentage may differ from the weekly RSV report. The weekly RSV report may be accessed at

<https://www.dshs.state.tx.us/RSV/disease/rsv-Data.aspx>.

### U.S. Outpatient Influenza-like Illness Surveillance Network (ILINet)

Table 4: Texas ILINet Reporting and Patient Visit Summary for the Current Week

Week 32	
Number of providers reporting <sup>†</sup>	84
Number of providers reporting patient visits	83
Number (%) of providers with at least one ILI case	63 (75.90%)
Percentage of all visits due to ILI	2.95%
Texas ILINet baseline <sup>‡</sup> , 2014–2015	5.42%

<sup>†</sup>Reporting providers include both ILINet and RVSP providers.

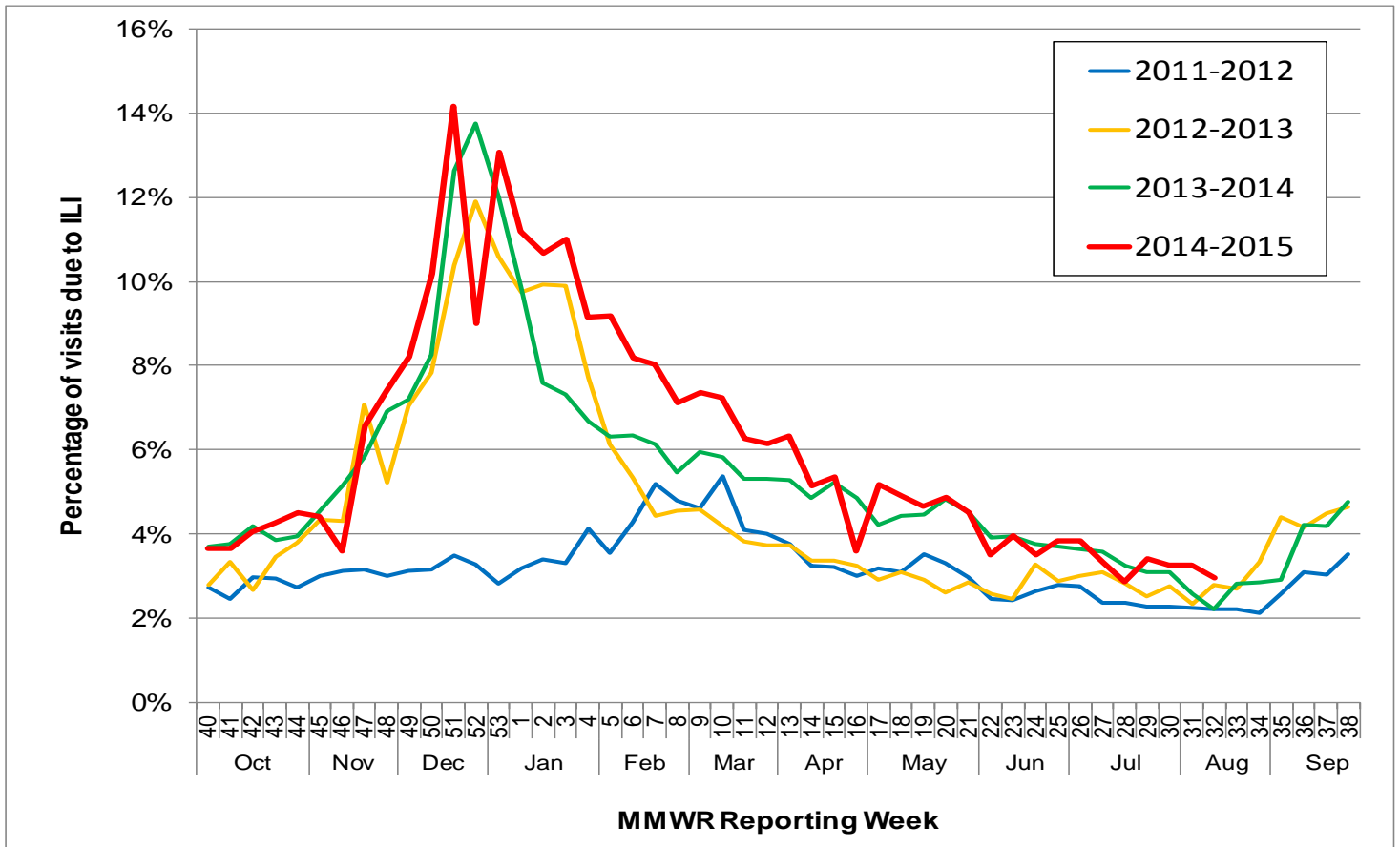
<sup>‡</sup>The baseline is the mean percentage of patient visits for ILI during non-influenza weeks for the previous three seasons plus two standard deviations. A “non-influenza week” is defined as a week that accounted for less than 2% of the season’s total number of specimens that tested positive for influenza

Table 5: Percentage of Visits for Influenza-like Illness Reported by Texas ILINet Providers (as of 08/20/2015 2:15 PM)

Week	Providers Reporting	Number of ILI Cases by Age Group (Years)					Total ILI (all ages)	Total Patients	% ILI
		0-4	5-24	25-49	50-64	65+			
201440	112	160	384	313	112	93	1062	28992	3.66%
201441	112	181	390	312	139	93	1115	30402	3.67%
201442	112	237	430	296	133	94	1190	29486	4.04%
201443	116	210	475	368	136	103	1292	30221	4.28%
201444	114	207	495	363	109	116	1290	28667	4.50%
201445	117	211	522	346	119	90	1288	29165	4.42%
201446	83	249	387	103	32	22	793	22064	3.59%
201447	110	294	858	426	109	31	1718	26133	6.57%
201448	111	260	702	472	108	45	1587	21456	7.40%
201449	117	380	1011	680	288	221	2580	31461	8.20%
201450	119	459	1576	677	268	209	3189	31306	10.19%
201451	100	556	1611	715	280	210	3372	23802	14.17%
201452	86	416	666	256	133	137	1608	17869	9.00%
201453	97	417	573	750	329	220	2289	17517	13.07%
201501	101	388	774	791	372	311	2636	23584	11.18%
201502	108	478	1361	923	279	94	3135	29338	10.69%
201503	109	511	1421	946	277	102	3257	29598	11.00%

Week	Providers Reporting	Number of ILI Cases by Age Group (Years)					Total ILI (all ages)	Total Patients	% ILI
		0-4	5-24	25-49	50-64	65+			
201504	115	440	1247	815	253	94	2849	31140	9.15%
201505	120	409	1240	761	327	200	2937	31970	9.19%
201506	118	340	1049	737	302	193	2621	31994	8.19%
201507	117	354	907	692	330	225	2508	31270	8.02%
201508	120	275	828	583	247	189	2122	29847	7.11%
201509	120	323	931	625	256	181	2316	31432	7.37%
201510	121	310	733	615	282	189	2129	29417	7.24%
201511	123	302	570	562	226	166	1826	29200	6.25%
201512	121	272	621	582	239	197	1911	31079	6.15%
201513	113	248	590	467	231	199	1735	27429	6.33%
201514	112	237	489	359	258	162	1505	29347	5.13%
201515	112	222	598	382	201	152	1555	29117	5.34%
201516	116	206	312	240	144	162	1064	29716	3.58%
201517	113	177	542	399	193	162	1473	28540	5.16%
201518	113	190	467	405	180	138	1380	28177	4.90%
201519	114	134	456	321	190	150	1251	26872	4.66%
201520	112	161	479	344	163	116	1263	25955	4.87%
201521	109	145	378	295	131	110	1059	23463	4.51%
201522	100	112	298	252	72	26	760	21614	3.52%
201523	99	112	349	265	87	21	834	21111	3.95%
201524	100	118	305	222	66	37	748	21277	3.52%
201525	106	122	275	249	108	109	863	22444	3.85%
201526	103	95	215	272	90	79	751	19505	3.85%
201527	104	72	241	210	89	97	709	21418	3.31%
201528	92	72	209	197	28	20	526	18281	2.88%
201529	102	87	224	225	103	87	726	21218	3.42%
201530	77	62	163	160	38	8	431	13197	3.27%
201531	99	76	223	210	93	114	716	21881	3.27%
201532	84	54	237	175	40	23	529	17962	2.95%

Figure 1: Percentage of Visits Due to Influenza-like Illness Reported by Texas ILINet Participants, 2011–2015 Seasons



### Reports from Health Service Regions

Reports were received from all Health Service Regions (HSRs) during week 32. HSR 6/5S reported a decreased level of flu activity compared to week 31. The remaining HSRs reported the same level of flu activity compared to week 31.

### Variant Influenza Viruses

No variant or novel influenza viruses have been detected in Texas in 2014 or 2015.

### Institutional Outbreaks

No ILI or influenza-associated outbreaks were reported during week 32.

### Influenza-Associated Pediatric Mortality

No influenza-associated pediatric deaths were reported during week 32.

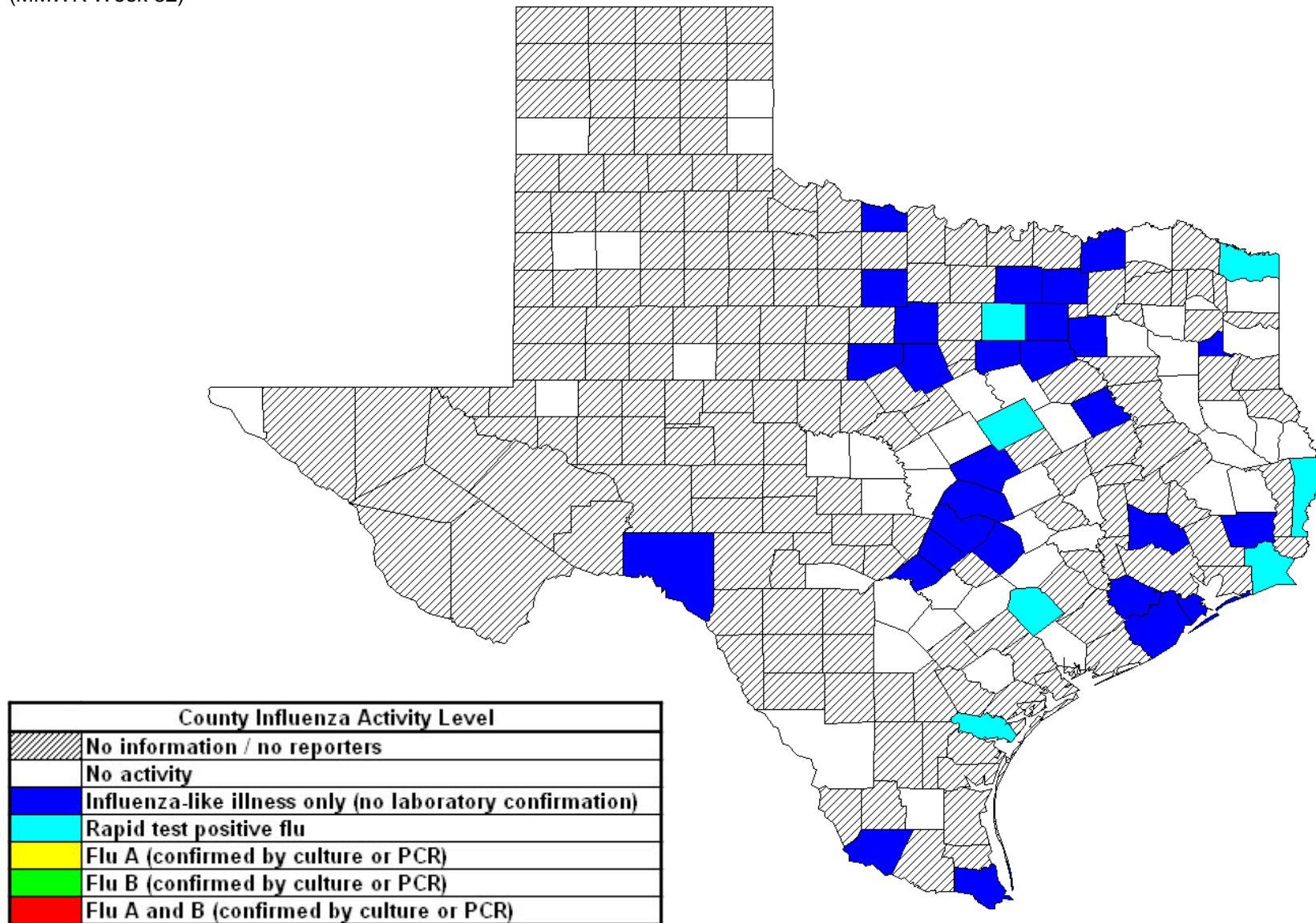
Seventeen influenza-associated pediatric deaths have been reported in Texas during the 2014-2015 influenza season. Cases of influenza-associated pediatric mortality (children <18 years of age) are reportable year-round and by law in Texas.

Table 7: Influenza-Associated Pediatric Deaths Reported in Texas During the 2014–2015 Season

Month of Pediatric Death	Influenza A (H1N1)	Influenza A (H3N2)	Influenza A (Not Subtyped)	Influenza B	Influenza, Not Typed / Not Differentiated	Influenza virus co-infection: A (not subtyped) and B	Total, All Influenza Types / Subtypes
<b>2014</b>							
October	0	0	0	0	0	0	0
November	0	0	0	1	0	0	1
December	0	1	4	2	0	0	7
<b>2015</b>							
January	0	2	2	1	0	0	5
February	0	0	0	1	0	0	1
March	0	0	1	2	0	0	3
April	0	0	0	0	0	0	0
May	0	0	0	0	0	0	0
June	0	0	0	0	0	0	0
July	0	0	0	0	0	0	0
August	0	0	0	0	0	0	0
<b>Total</b>	<b>0</b>	<b>3</b>	<b>7</b>	<b>7</b>	<b>0</b>	<b>0</b>	<b>17</b>

## Statewide Influenza Activity Map

Figure 4: Texas Map Displaying the Highest Level of Influenza or ILI Activity Reported by County for the Week Ending August 15, 2015 (MMWR Week 32)



Please note: The majority of influenza cases are not reportable by law in Texas. This map contains data from sentinel sites and only displays influenza and ILI cases that were reported to public health. Positive laboratory results are reported according to specimen collection date, or date received in the laboratory if the former is unknown.

## Texas Influenza Surveillance Components and Measures

Activity codes (see <http://www.cdc.gov/flu/weekly/overview.htm>)

Statewide influenza activity level

A code reported weekly by states and territories to CDC indicating the geographic spread of influenza in the state. Levels are no activity, sporadic, local, regional, and widespread.

ILINet Activity Indicator

A statewide level of influenza-like illness intensity (on a scale of 1-10, with 1 being the lowest level) assigned to each state weekly by CDC based on data reported through ILINet.

### Morbidity

Novel/variant influenza

Thorough investigations are performed on all cases of novel/variant influenza. *This condition is reportable by law in Texas.*

Texas ILINet

Providers voluntarily report weekly to CDC's ILINet system on the number of outpatient visits for ILI and total outpatient visits. Providers may submit up to 5 specimens per month for influenza testing. **See <http://www.dshs.state.tx.us/idcu/disease/influenza/surveillance/ILINet/> for information on how to become an ILINet provider.**

Respiratory Virus Surveillance Project (RVSP)

Providers report weekly to ILINet and submit specimens on the first 10 patients seen with ILI each week. Specimens are tested for a variety of respiratory viruses.

ILI activity

Non-ILINet providers report ILI or influenza data weekly to local or regional health departments.

Outbreaks

Healthcare, schools, and childcare facilities report ILI and influenza outbreaks to health departments in Texas. *This condition is reportable by law in Texas.*

### Mortality

Influenza-associated pediatric deaths

Deaths that are associated with influenza in children < 18 years of age are reported to health departments in Texas. *This condition is reportable by law in Texas.* <http://www.dshs.state.tx.us/idcu/disease/IAPM/>

### Laboratory

DSHS Austin laboratory

Providers voluntarily submit specimens to the DSHS Austin laboratory for influenza PCR testing throughout the season. Providers sign up for this program through their local health departments.

Laboratory Response Network (LRN) laboratories

Providers voluntarily submit specimens to one of the 9 Texas LRNs for influenza PCR testing throughout the season. Providers sign up for this program through their local health departments.

NREVSS

Laboratories voluntarily report influenza and other respiratory virus data weekly through the CDC's online NREVSS reporting system. **Laboratories sign up for this program by contacting DSHS.** <http://www.cdc.gov/surveillance/nrevss/>

## Recommended Resources

*Texas Department of State Health Services*

DSHS influenza page: <http://www.texasflu.org/>

Influenza surveillance data and reports: <http://www.dshs.state.tx.us/idcu/disease/influenza/surveillance/>

Map of Texas Health Service Regions: <http://www.dshs.state.tx.us/regions/state.shtm>

*Centers for Disease Control and Prevention*

National FluView weekly flu report: <http://www.cdc.gov/flu/weekly/>

Variant and novel influenza viruses: <http://www.cdc.gov/flu/avianflu/index.htm>; <http://www.cdc.gov/flu/swineflu/index.htm>

Infection Control in Healthcare Facilities: <http://www.cdc.gov/flu/professionals/infectioncontrol/>

Seasonal Flu Information for Schools and Childcare Providers: <http://www.cdc.gov/flu/school/index.htm>

*World Health Organization*

Influenza page: <http://www.who.int/topics/influenza/en/>

Disease Outbreak News: <http://www.who.int/csr/don/en/>