

Texas Influenza Summer Surveillance Report 2014–2015 Season/2015 MMWR Week 24

(June 14, 2015 – June 20, 2015)

Report produced on 6/26/2015

Summary

Influenza activity remains low in Texas. The percentage of specimens positive for influenza somewhat decreased compared to last week. Influenza-like illness (ILI) activity slightly increased compared to last week, but remained below the 2014-2015 state ILINet baseline of 5.42%.

Table 1: Summary of Texas Influenza (Flu) and Influenza-like Illness (ILI) Activity for the Current Week

Texas Surveillance Component	Change from Previous Week	Current Week	Previous Week [†]	Page of Report
Statewide influenza activity level reported to CDC (geographic spread of influenza)	Not determined during summer	N/A	N/A	--
Statewide ILINet Activity Indicator assigned by CDC (intensity of influenza-like illness)	Not determined during summer	N/A	N/A	--
Percentage of specimens positive for influenza	▼0.48%	1.16%	1.64% [†]	1
Percentage of visits due to ILI (ILINet)	▲0.13%	4.23%	4.10% [†]	2
Number of regions reporting increased flu/ILI activity	No change	0	0	4
Number of regions reporting decreased flu/ILI activity	▼1	1	2	4
Number of variant/novel influenza infections	No change	0	0	4
Number of ILI/influenza outbreaks	No change	0	0	4
Number of pediatric influenza deaths	No New Cases Reported	0	0	4

[†]Data displayed have been updated since last week's flu report with any new reports received.

Laboratory Results

Influenza

Hospital laboratories across Texas voluntarily report influenza tests (antigen, culture, and PCR) to the National Respiratory and Enteric Virus Surveillance System (NREVSS). Providers throughout Texas also submit specimens for influenza testing (PCR) to Texas public health laboratories, including the Texas Department of State Health Services (DSHS) state laboratory in Austin and the nine Texas Laboratory Response Network (LRN) laboratories. The results reported by Texas NREVSS participants and public health laboratories for the current week is summarized in the table below. Additional influenza test results (rapid tests, culture, PCR) and ILI activity were reported from providers and public health departments throughout the state (see county map at the end of this report).

Table 2: Influenza Testing Performed by Texas Laboratories for the Current Week

	Week 24
Number of labs reporting flu tests	11
Number of specimens tested	606
Number of positive specimens (%) [†]	7 (1.16%)
Percentage of total tests that were antigen detection tests	30.20%
Positive specimens by type/subtype [n (%)]	
Influenza A	6 (85.71%)
Subtyping performed	0 (0.00%)
A (H1N1)	0 (0.00%)
A (H3N2)	0 (0.00%)
Subtyping not performed	6 (100.00%)
Influenza B	1 (14.29%)

[†]Laboratory data in 2014-2015 season reports may not be comparable to reports from previous seasons because of the inclusion of DSHS and LRN laboratory data for the current season.

Other Respiratory Viruses

The NREVSS system collects information on a variety of respiratory viruses in addition to influenza including parainfluenza virus, respiratory syncytial virus (RSV), rhinovirus, human metapneumovirus (HMPV), and respiratory adenovirus. The results for the current week are summarized below.

Table 3: Non-Influenza Respiratory Virus Testing Performed by Texas NREVSS Laboratories for the Current Week

Virus	Number of Laboratories Testing	Tests Performed	Positive Tests	Percentage of Tests Positive
Adenovirus (respiratory)	8	462	44	9.52%
HMPV	9	452	10	2.21%
Parainfluenza virus	9	578	25	4.33%
Rhinovirus	7	371	86	23.18%
RSV ^{†^}	12	482	8	1.66%

[†]RSV tests displayed in the table are antigen detection tests only. Some non-NREVSS reporters also contribute to the RSV data.

[^]Numbers and percentage may differ from the weekly RSV report. The weekly RSV report may be accessed at <https://www.dshs.state.tx.us/RSV/disease/rsv-Data.aspx>.

U.S. Outpatient Influenza-like Illness Surveillance Network (ILINet)

Table 4: Texas ILINet Reporting and Patient Visit Summary for the Current Week

	Week 24
Number of providers reporting [†]	89
Number of providers reporting patient visits	88
Number (%) of providers with at least one ILI case	60 (68.18%)
Percentage of all visits due to ILI	4.23%
Texas ILINet baseline [‡] , 2014–2015	5.42%

[†]Reporting providers include both ILINet and RVSP providers.

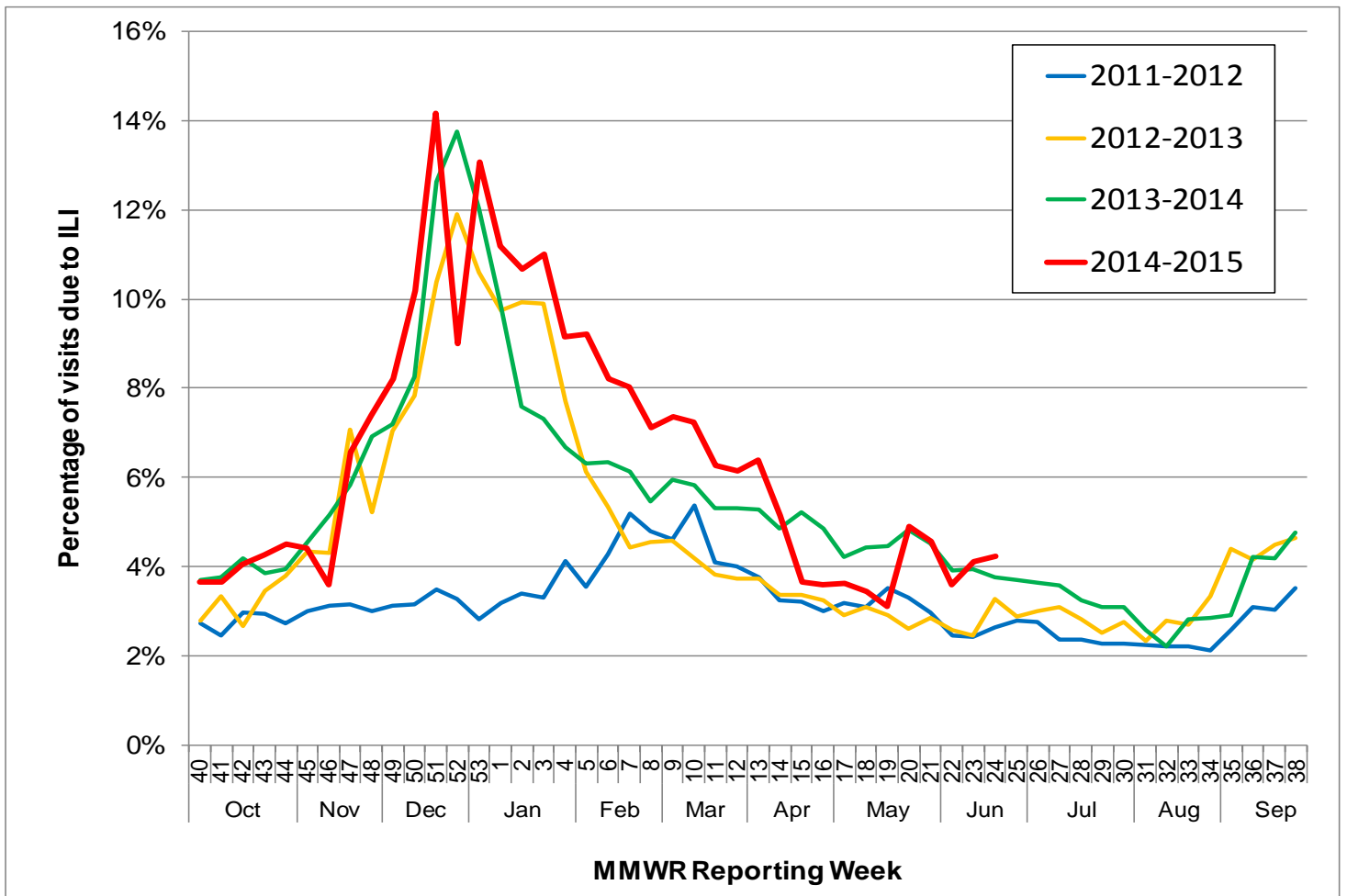
[‡]The baseline is the mean percentage of patient visits for ILI during non-influenza weeks for the previous three seasons plus two standard deviations. A “non-influenza week” is defined as a week that accounted for less than 2% of the season’s total number of specimens that tested positive for influenza

Table 5: Percentage of Visits for Influenza-like Illness Reported by Texas ILINet Providers (as of 6/25/2015 11:22 AM)

Week	Providers Reporting	Number of ILI Cases by Age Group (Years)					Total ILI (all ages)	Total Patients	% ILI
		0-4	5-24	25-49	50-64	65+			
201440	112	160	384	313	112	93	1062	28992	3.66%
201441	112	181	390	312	139	93	1115	30402	3.67%
201442	112	237	430	296	133	94	1190	29486	4.04%
201443	116	210	475	368	136	103	1292	30221	4.28%
201444	114	207	495	363	109	116	1290	28667	4.50%
201445	117	211	522	346	119	90	1288	29165	4.42%
201446	83	249	387	103	32	22	793	22064	3.59%
201447	110	294	858	426	109	31	1718	26133	6.57%
201448	111	260	702	472	108	45	1587	21456	7.40%
201449	117	380	1011	680	288	221	2580	31461	8.20%
201450	119	459	1576	677	268	209	3189	31306	10.19%
201451	100	556	1611	715	280	210	3372	23802	14.17%
201452	86	416	666	256	133	137	1608	17869	9.00%
201453	97	417	573	750	329	220	2289	17517	13.07%
201501	101	388	774	791	372	311	2636	23584	11.18%
201502	108	478	1361	923	279	94	3135	29338	10.69%
201503	109	511	1421	946	277	102	3257	29598	11.00%

Week	Providers Reporting	Number of ILI Cases by Age Group (Years)						Total ILI (all ages)	Total Patients	% ILI
201504	115	440	1247	815	253	94	2849	31140	9.15%	
201505	119	409	1240	761	327	200	2937	31910	9.20%	
201506	117	340	1049	737	302	193	2621	31934	8.21%	
201507	116	354	907	692	330	225	2508	31210	8.04%	
201508	119	275	828	583	245	189	2120	29807	7.11%	
201509	119	323	931	625	256	181	2316	31410	7.37%	
201510	120	310	733	615	282	189	2129	29371	7.25%	
201511	122	302	570	562	226	166	1826	29149	6.26%	
201512	120	272	620	582	239	197	1910	31031	6.16%	
201513	112	248	590	467	231	199	1735	27205	6.38%	
201514	111	237	489	359	258	162	1505	29292	5.14%	
201515	111	204	379	195	139	148	1065	29069	3.66%	
201516	115	206	312	240	144	162	1064	29666	3.59%	
201517	112	164	354	215	141	155	1029	28505	3.61%	
201518	112	171	282	235	143	142	973	28176	3.45%	
201519	112	131	268	148	140	141	828	26674	3.10%	
201520	110	161	479	344	163	116	1263	25774	4.90%	
201521	106	145	378	295	131	110	1059	23136	4.58%	
201522	94	100	290	251	71	25	737	20576	3.58%	
201523	91	102	340	263	87	21	813	19822	4.10%	
201524	89	102	298	219	64	33	716	16946	4.23%	

Figure 1: Percentage of Visits Due to Influenza-like Illness Reported by Texas ILINet Participants, 2011–2015 Seasons



Reports from Health Service Regions

Reports were received from seven Health Service Regions (HSRs) during week 24. HSRs 1, 2/3, 6/5N, 7 and 11 reported the same level of flu activity compared to week 23. HSR 8 reported a decreased level of flu activity compared to week 23. HSR 9/10 could not determine the level of flu activity compared to week 23.

Variant Influenza Viruses

No variant or novel influenza viruses have been detected in Texas in 2014 or 2015.

Institutional Outbreaks

No ILI or influenza-associated outbreaks were reported during week 24.

Influenza-Associated Pediatric Mortality

No influenza-associated pediatric deaths were reported during week 24.

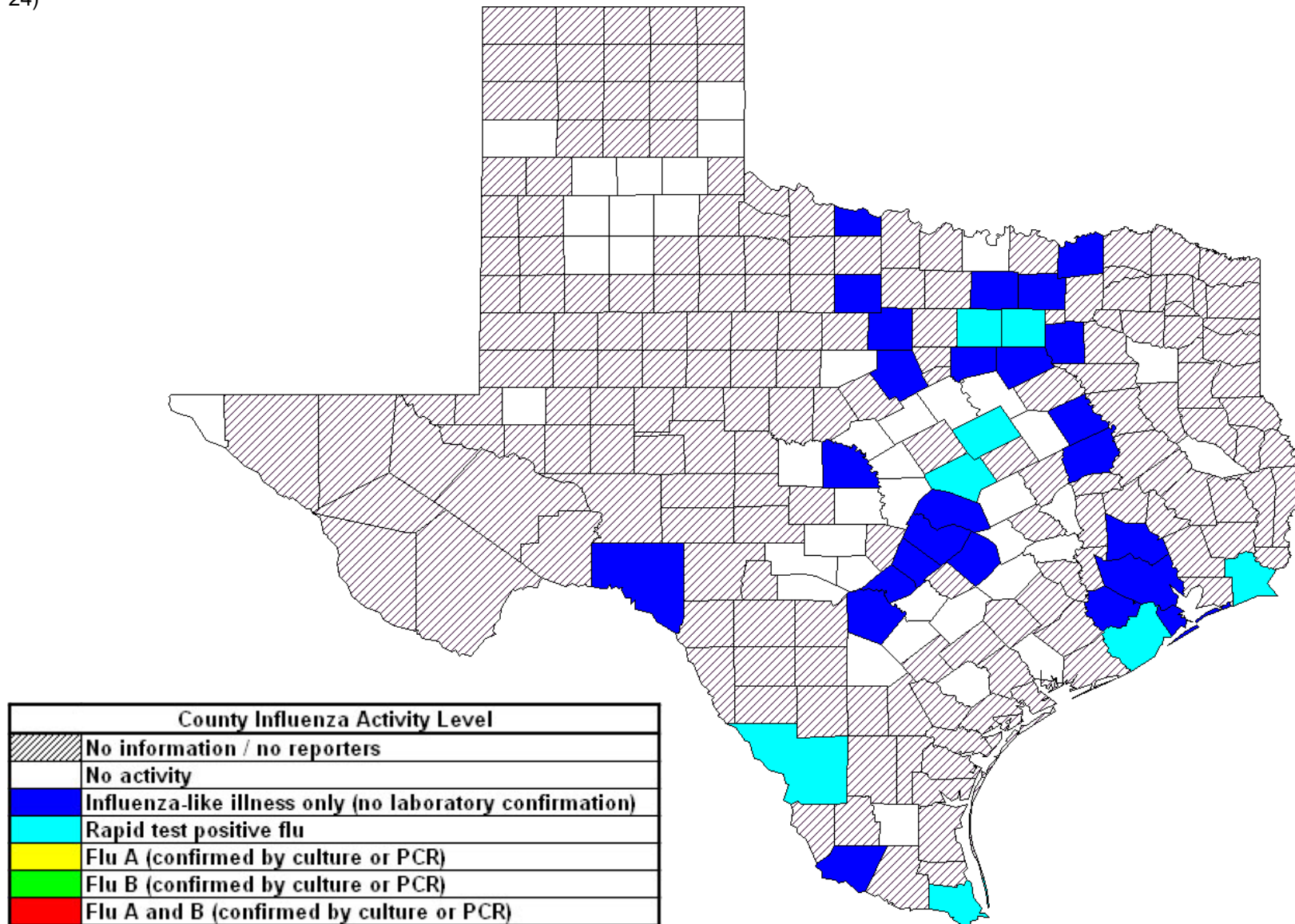
Sixteen influenza-associated pediatric deaths have been reported in Texas during the 2014-2015 influenza season. Cases of influenza-associated pediatric mortality (children <18 years of age) are reportable year-round and by law in Texas.

Table 7: Influenza-Associated Pediatric Deaths Reported in Texas During the 2014–2015 Season

Month of Pediatric Death	Influenza A (H1N1)	Influenza A (H3N2)	Influenza A (Not Subtyped)	Influenza B	Influenza, Not Typed / Not Differentiated	Influenza virus co-infection: A (not subtyped) and B	Total, All Influenza Types / Subtypes
2014							
October	0	0	0	0	0	0	0
November	0	0	0	1	0	0	1
December	0	1	4	2	0	0	7
2015							
January	0	2	2	1	0	0	5
February	0	0	0	0	0	0	0
March	0	0	1	2	0	0	3
April	0	0	0	0	0	0	0
May	0	0	0	0	0	0	0
June	0	0	0	0	0	0	0
Total	0	3	7	6	0	0	16

Statewide Influenza Activity Map

Figure 4: Texas Map Displaying the Highest Level of Influenza or ILI Activity Reported by County for the Week Ending June 20, 2015 (MMWR Week 24)



Please note: The majority of influenza cases are not reportable by law in Texas. This map contains data from sentinel sites and only displays influenza and ILI cases that were reported to public health. Positive laboratory results are reported according to specimen collection date, or date received in the laboratory if the former is unknown.

Texas Influenza Surveillance Components and Measures

Activity codes (see <http://www.cdc.gov/flu/weekly/overview.htm>)

Statewide influenza activity level

A code reported weekly by states and territories to CDC indicating the geographic spread of influenza in the state. Levels are no activity, sporadic, local, regional, and widespread.

ILINet Activity Indicator

A statewide level of influenza-like illness intensity (on a scale of 1-10, with 1 being the lowest level) assigned to each state weekly by CDC based on data reported through ILINet.

Morbidity

Novel/variant influenza

Thorough investigations are performed on all cases of novel/variant influenza. *This condition is reportable by law in Texas.*

Texas ILINet

Providers voluntarily report weekly to CDC's ILINet system on the number of outpatient visits for ILI and total outpatient visits. Providers may submit up to 5 specimens per month for influenza testing. **See <http://www.dshs.state.tx.us/idcu/disease/influenza/surveillance/ILINet/> for information on how to become an ILINet provider.**

Respiratory Virus Surveillance Project (RVSP)

Providers report weekly to ILINet and submit specimens on the first 10 patients seen with ILI each week. Specimens are tested for a variety of respiratory viruses.

ILI activity

Non-ILINet providers report ILI or influenza data weekly to local or regional health departments.

Outbreaks

Healthcare, schools, and childcare facilities report ILI and influenza outbreaks to health departments in Texas. *This condition is reportable by law in Texas.*

Mortality

Influenza-associated pediatric deaths

Deaths that are associated with influenza in children < 18 years of age are reported to health departments in Texas. *This condition is reportable by law in Texas.* <http://www.dshs.state.tx.us/idcu/disease/IAPM/>

Laboratory

DSHS Austin laboratory

Providers voluntarily submit specimens to the DSHS Austin laboratory for influenza PCR testing throughout the season. Providers sign up for this program through their local health departments.

Laboratory Response Network (LRN) laboratories

Providers voluntarily submit specimens to one of the 9 Texas LRNs for influenza PCR testing throughout the season. Providers sign up for this program through their local health departments.

NREVSS

Laboratories voluntarily report influenza and other respiratory virus data weekly through the CDC's online NREVSS reporting system. **Laboratories sign up for this program by contacting DSHS.** <http://www.cdc.gov/surveillance/nrevss/>

Recommended Resources

Texas Department of State Health Services

DSHS influenza page: <http://www.texasflu.org/>

Influenza surveillance data and reports: <http://www.dshs.state.tx.us/idcu/disease/influenza/surveillance/>

Map of Texas Health Service Regions: <http://www.dshs.state.tx.us/regions/state.shtm>

Centers for Disease Control and Prevention

National FluView weekly flu report: <http://www.cdc.gov/flu/weekly/>

Variant and novel influenza viruses: <http://www.cdc.gov/flu/avianflu/index.htm>; <http://www.cdc.gov/flu/swineflu/index.htm>

Infection Control in Healthcare Facilities: <http://www.cdc.gov/flu/professionals/infectioncontrol/>

Seasonal Flu Information for Schools and Childcare Providers: <http://www.cdc.gov/flu/school/index.htm>

World Health Organization

Influenza page: <http://www.who.int/topics/influenza/en/>

Disease Outbreak News: <http://www.who.int/csr/don/en/>