



TEXAS
Health and Human
Services

Texas Department of State
Health Services

RSV Surveillance: A Review and Update

Overview

- Current RSV (Respiratory Syncytial Virus) Surveillance
- Data Availability and Use
- Considerations of Changing Environment
- Review



TEXAS

Health and Human Services

Texas Department of State
Health Services

Current RSV Surveillance

- Individual cases of RSV are **not** a reportable condition
 - Exceptions include:
 - Unusual group of expression of disease and
 - Outbreaks of any kind and any are considered reportable, including RSV
- Passive Sentinel Surveillance
 - Lab data is voluntarily reported by Texas laboratories participating in the National Respiratory and Enteric Virus Surveillance System (NREVSS)
- NREVSS
 - CDC Program
 - Participating Laboratories report weekly
 - Currently the **only** source of RSV data



TEXAS
Health and Human Services

Texas Department of State
Health Services

Current RSV Surveillance

- Seasonality Changes
 - RSV seasons during COVID-19 (2020-2022) saw peaks of activity during summer months
 - This was uncommon and may have been due to COVID-19
 - Most recent season (2022-2023) saw a shift back to regular seasonality with a peak in October
- DSHS Collaboration with RSV Task Force
 - RSV Task Force is a subcommittee of TPS (Texas Pediatric Society) composed of healthcare providers throughout Texas.
 - This taskforce oversees implementation of RSV preventative product (Synagis/Palivizumab) for TPS and reviews trends provided by EAIDU Influenza Surveillance Coordinator.



TEXAS
Health and Human Services

Texas Department of State
Health Services

Available NREVSS* Data

LabID	INST	CITY	STA	Season	WEEK	WeekEnding	TestType	RSV_TEST	RSVA_POS	RSVB_POS	RSVUNK_F
1243	Test Medical Center	Sample	TX	2324	2330	7/29/2023	AG	0	0	0	0
1243	Test Medical Center	Sample	TX	2324	2330	7/29/2023	PCR	50	0	0	0
1243	Test Medical Center	Sample	TX	2324	2330	7/29/2023	VI	0	0	0	0
1243	Test Medical Center	Sample	TX	2324	2329	7/22/2023	AG	0	0	0	0
1243	Test Medical Center	Sample	TX	2324	2329	7/22/2023	PCR	64	0	0	0
1243	Test Medical Center	Sample	TX	2324	2329	7/22/2023	VI	0	0	0	0
1243	Test Medical Center	Sample	TX	2324	2328	7/15/2023	AG	0	0	0	0
1243	Test Medical Center	Sample	TX	2324	2328	7/15/2023	PCR	63	0	0	0
1243	Test Medical Center	Sample	TX	2324	2328	7/15/2023	VI	0	0	0	0

*National Respiratory and Enteric Virus Surveillance System, Accessed on 08/04/2023

- Reported weekly by MMWR (YYWW; ex. 20**23** week **30**=2330)
 - Aggregate testing data
 - Test Type
 - Total Tests
 - RSV A & B Positive
 - And Positive RSV tests not typed (unknown)



TEXAS

Health and Human Services

Texas Department of State
Health Services

Use of NREVSS Data

- EAIDU Influenza Coordinator provides and publishes weekly trend reports of RSV positivity during RSV season
 - Texas follows CDC guidance in establishing RSV seasons (aka annual epidemic)
 - 2 consecutive weeks with PCR% positivity $\geq 3\%$ identifies beginning of epidemic/season
 - 2 consecutive weeks $\leq 3\%$ identifies the end of the epidemic/season
- Maintain year-round surveillance
- Many providers have switched from antigen to PCR testing
 - PCR data provides better representativeness in current data



TEXAS
Health and Human Services

Texas Department of State
Health Services

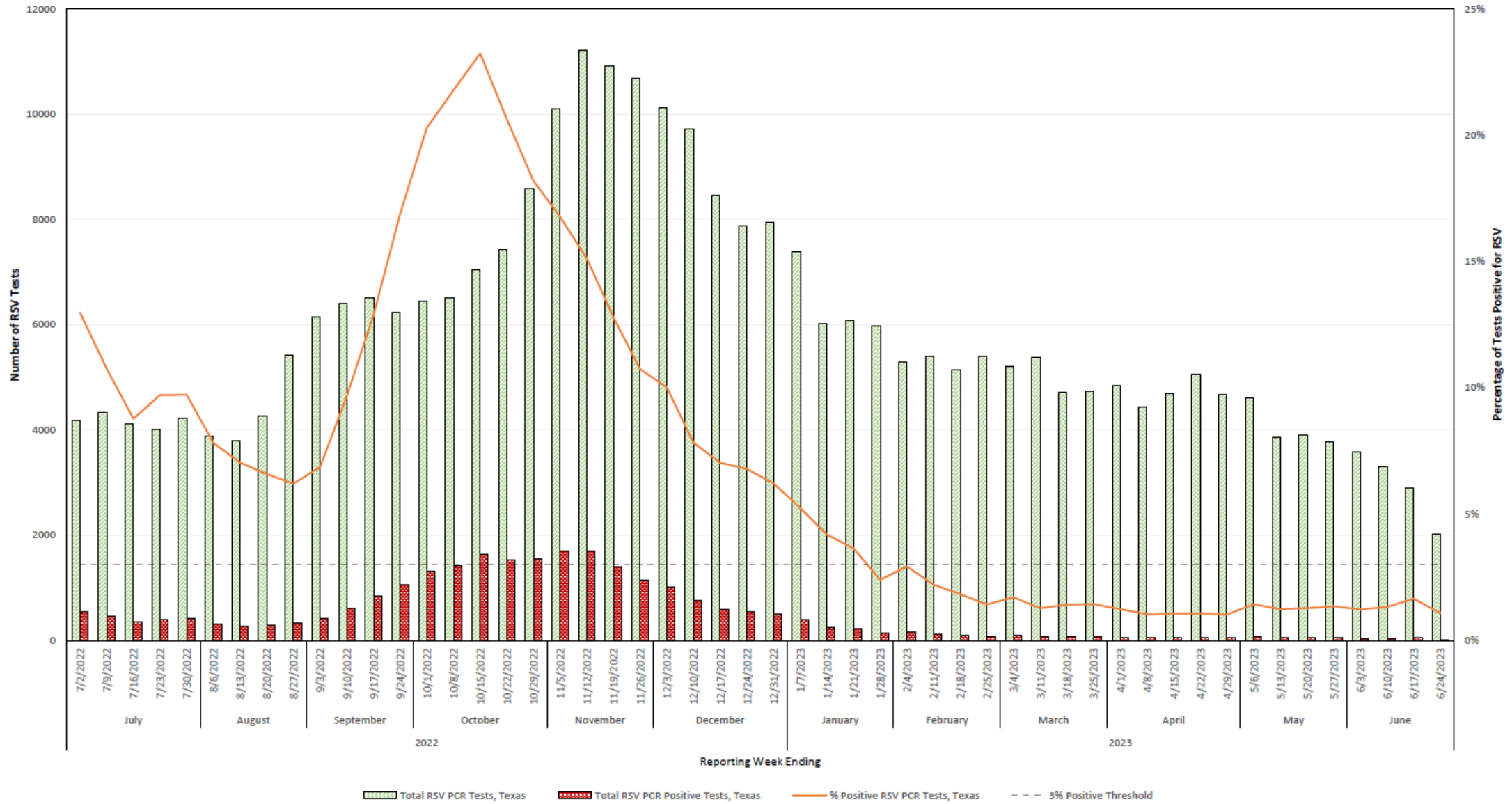


TEXAS

Health and Human Services

Texas Department of State Health Services

Number & Percentage of PCR Tests Positive for Respiratory Syncytial Virus (RSV)
All Texas Sites, 2022-2023 Season



- Dashed lines represents 3% for PCR % positivity

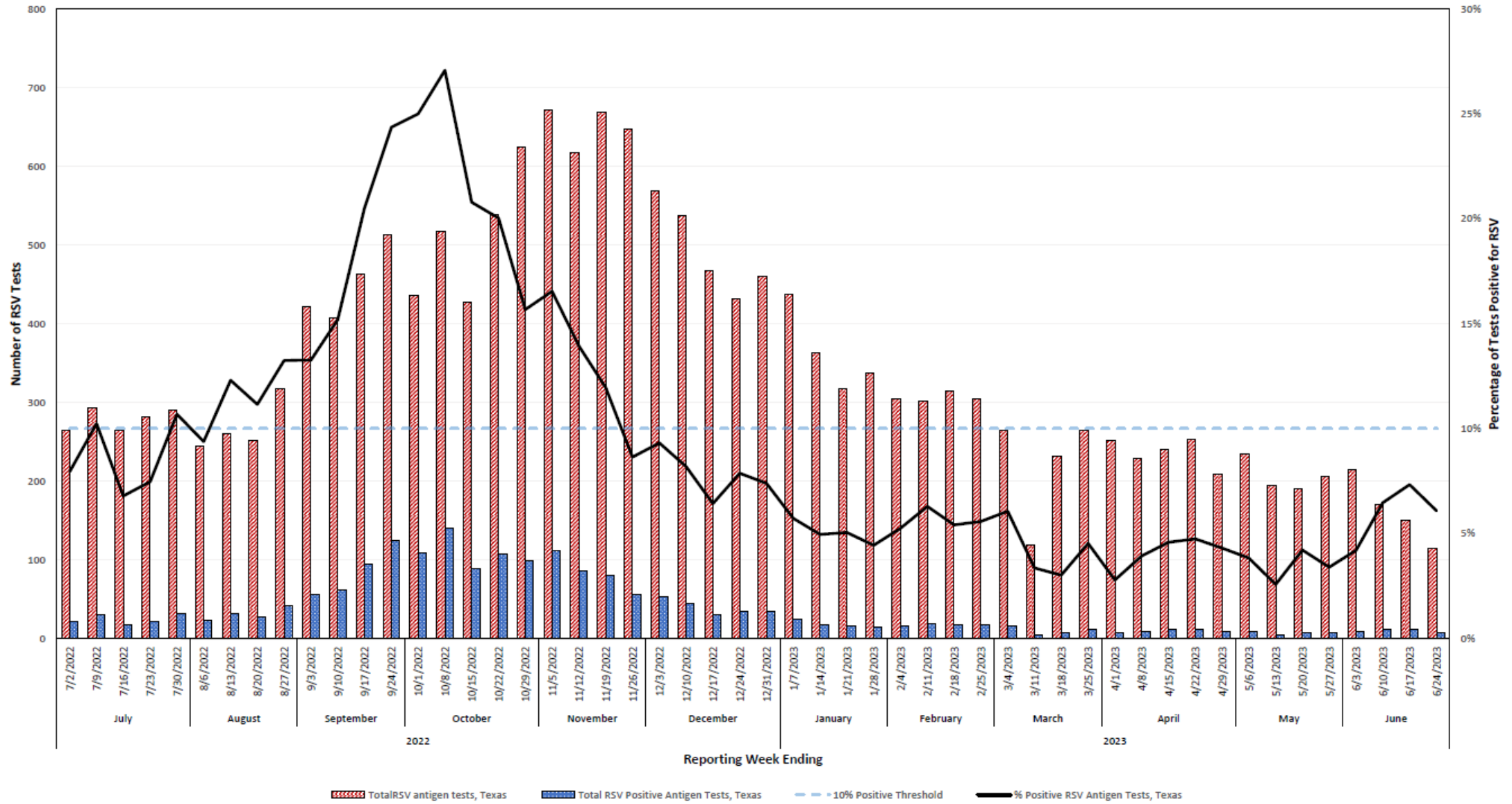


TEXAS

Health and Human Services

Texas Department of State Health Services

Number & Percentage of Antigen Tests Positive for Respiratory Syncytial Virus (RSV) All Texas Sites, 2022-2023 Season



- Dashed lines represents 10% for antigen % positivity

Changing Landscape of RSV



TEXAS

Health and Human Services

Texas Department of State
Health Services

- RSV Immunization
 - Beyfortus
 - Addition to childhood vaccination schedule
- Increasing Interest in Epidemiology of RSV
 - Increasing data requests
 - Questions concerning past surveillance
 - Providers looking to better understand RSV
 - CDC's interest in RSV deaths
- Pan-Respiratory Disease Surveillance

Changing Landscape of RSV

- Considerations:
 - Burden to benefit for possible reporters
 - Workload for local and regional HD's
 - Additional/siloed data streams
- Current Actions
 - Identifying additional data sources
 - Syndromic Surveillance/TxS2
 - Increased reporting from NREVSS providers
 - Further analysis of available RSV data



TEXAS
Health and Human Services

Texas Department of State
Health Services

In Review



TEXAS

Health and Human Services

Texas Department of State
Health Services

- Current RSV surveillance is passive
- Data is currently used mainly by the TPS RSV Task Force to guide recommendations for use of prophylaxis.
- New immunizations and interest may increase the need for better data regarding the epidemiology and surveillance of RSV
- No definitive changes in surveillance practice for regional or local HD's as of now.