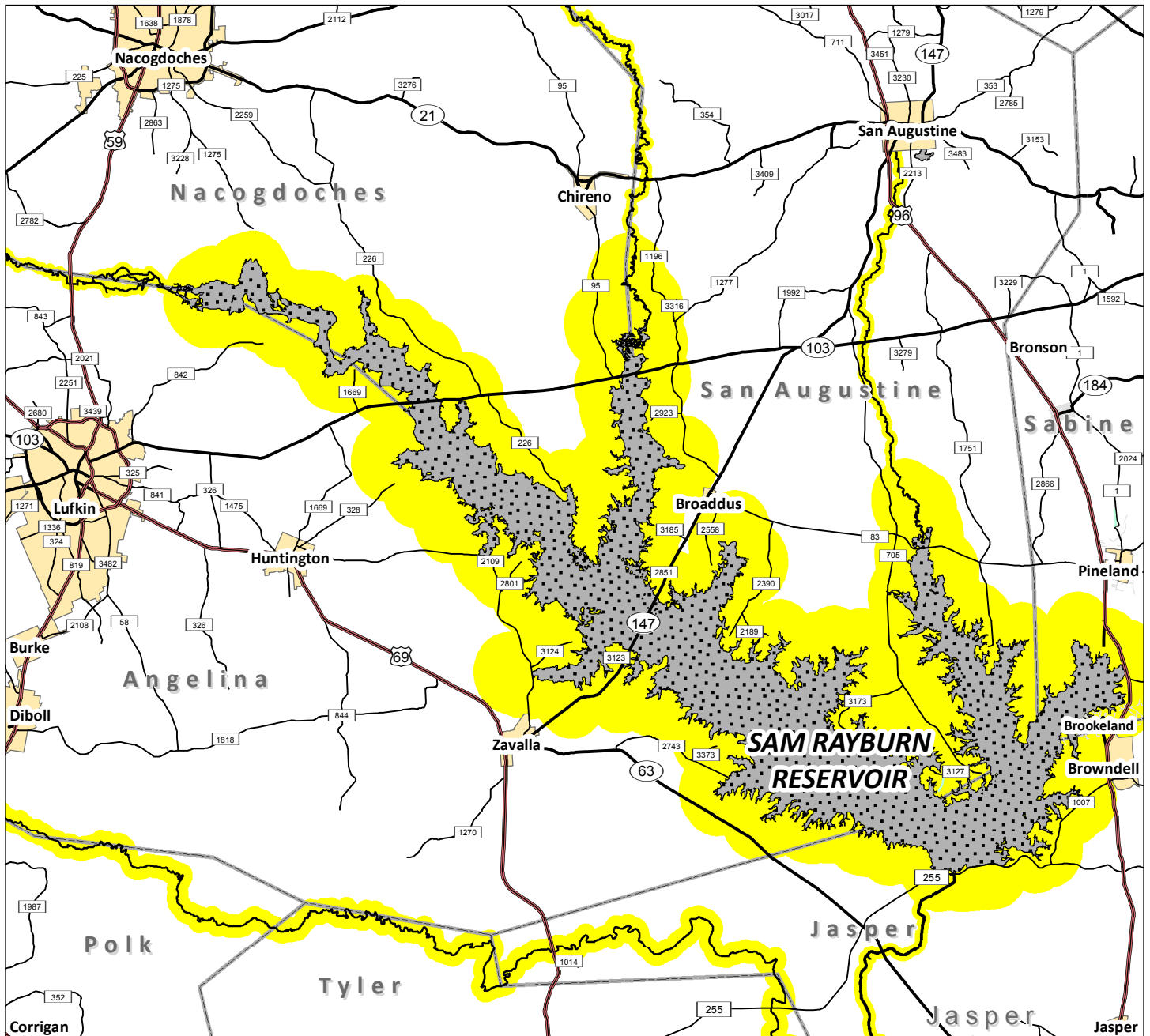


Sam Rayburn Reservoir

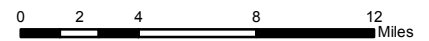
Angelina, Jasper, Nacogdoches, Sabine, and San Augustine Counties

ADV-51 Issued January 24, 2014, Rescinding ADV-12 Consumption Advice for Sam Rayburn Reservoir



Contaminants of Concern:

Dioxins and Mercury (Hg)



Species Affected	Women of Childbearing Age and Children < 12	Women Past Childbearing Age and Adult Men ¹
Blue catfish > 30 inches	DO NOT EAT	2 meals/month
Flathead catfish	DO NOT EAT	1 meal/month
Gar (all species)	DO NOT EAT	1 meal/month
Largemouth bass > 16 inches	DO NOT EAT	2 meals/month
Smallmouth buffalo	DO NOT EAT	DO NOT EAT
Spotted bass > 16 inches	DO NOT EAT	2 meals/month

¹ A meal is eight ounces of fish.

