



**TEXAS**  
Health and Human  
Services

---

Texas Department of State  
Health Services

# **HIV Care Services Group**

## **RW Eligibility Policy**

---

**June 25, 2019**  
**Desty Muturi, MPH, Care Services Trainer**



TEXAS  
Health and Human Services

Texas Department of State  
Health Services

# Texas Ryan White Program

- Federal program that provides funding for medical and supportive services to Persons Living with HIV (PLWH).



**A**



**C**

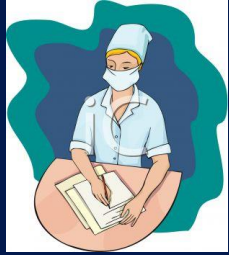


**B**



**D**

# Eligibility Refresher



Initial Eligibility and  
Annual Recertification



No Changes



Complete  
attestation  
form and  
update  
client record

Changes



Collect  
supporting  
documentation  
and update  
client record



TEXAS  
Health and Human Services

Texas Department of State  
Health Services

# Eligibility Terms

---

**Recertification**

**12 mo. (birth month)**

**SELF-Attestation**

**6 mo. (half-birth month)**



TEXAS  
Health and Human Services

Texas Department of State  
Health Services

# RW Eligibility

---

- The eligibility process determines whether someone living with HIV is eligible for Ryan White services. The process ensures eligible client access to needed services while adhering to payer of last resort (PoLR) requirements.
- Eligibility must be assessed twice a year, no matter what RW service is being provided (even if it's just occasional referrals!)
- There is always a place to revolutionize and trail blaze in providing care to PLWH! **Eligibility policy is NOT ONE OF THEM.**



TEXAS  
Health and Human Services

Texas Department of State  
Health Services

# RW Eligibility Timeline



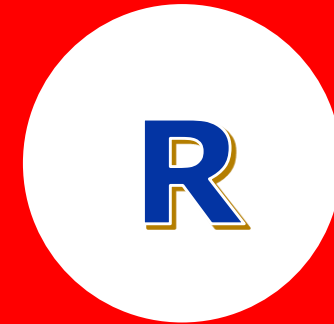
## INITIAL DETERMINATION

**\*Only needs to  
happen once initially,  
UNLESS birth month  
is 2+ months after  
initial date**



## SELF-ATTESTATION

**Only needs to  
happen 6 mo. after  
birth month**



## RECERTIFICATION

**Happens at client's  
birth-month (client  
is now aligned)**

# Commonly Found Gaps In Documentation

---



TEXAS  
Health and Human Services

Texas Department of State  
Health Services

1. Required Income Worksheet is not being used. Click here: <https://www.dshs.texas.gov/hivstd/policy/policies/20-001.shtm> (and scroll to the bottom for required docs)
2. Insurance verification
  - Marked N/A or not done at all
  - Filling in "Ryan White" for clients without insurance.
3. Self-attestations being completed late or not at all.



TEXAS

Health and Human Services

Texas Department of State  
Health Services

---

# Questions??