



Mandatory Reporting of Healthcare Associated Infections in Texas

Texas Department of State Health Services

Healthcare Associated Infections

512-776-6878

512.776.3773

HAITexas@dshs.state.tx.us



Presentation Overview

1. HAI Legislation
2. Reporting Requirements
3. Reporting Timeline
4. Preparation for Reporting



What are Health care Associated Infections?

- A localized or systemic condition resulting from an adverse reaction to the presence of infectious agent(s) and/or toxin(s) to which a patient is exposed in the course of the delivery of health care.
 - **CLABSI:** Central Line Associated Bloodstream Infections
 - **SSI:** Surgical Site Infections

See www.CDC.gov/nhsn for surveillance definitions



Legislation Background

- 79th legislative Session (2005) passed study bill
 - Advisory Panel, White Paper
- 80th legislative Session (2007) passed SB 288
 - Reporting provisions
- 81st legislative Session (2009) passed SB 203:
Amended SB 288 (Chapter 98)
 - Added two members to AP
 - 28 PAE
- **82nd Legislative Session (2011)**
 - **To allow for use of NHSN**





Chapter 98 Requirements

- Establish 18-member Advisory Panel
- Establish Healthcare-Associated Infections (HAI) reporting system
- Compile and make available to the public a data summary, by health care facility, at least annually
- Allow health care facilities to submit concise written comments
- Provide education and training
- Ensure confidentiality & legal protections
- Verify the accuracy and completeness of the data reported
- Receiving reports from the public
- Enforcement



Reporting Requirements

➤ Who is required to report?

- State-Operated/Maintained hospitals that provide surgical or obstetrical services
- Ambulatory Surgical Centers
 - Licensed under Chapter 243
- General Hospitals
 - Licensed under Chapter 241
 - **INCLUDES SOME LTACs and CAHs with ICU/CCU/NICU**

**DOES NOT INCLUDE COMPREHENSIVE MEDICAL
REHABILITATION HOSPITAL**



Reporting Requirements

- Reportable healthcare-associated infections
 - **Central line-associated bloodstream infections** in the following special care settings: adult, pediatric and/or adolescent ICUs & CCUs, NICUs (Level II/III & Level III Nurseries)
 - **Surgical site infections**
 - PEDS/ADOLESCENT HOSPITALS: Cardiac procedures, spinal surgery with instrumentation, and ventriculoperitoneal shunt procedures
 - ALL OTHER HOSPITALS: Colon surgeries, hip & knee arthroplasties, abdominal & vaginal hysterectomies, vascular procedures, and coronary artery bypass grafts



SSI Reporting Requirements

- Facilities shall report HAI data on patients who are admitted to the facility for inpatient treatment of a surgical site infections associated with a reportable procedure within 30 calendar days of the procedure or within 1 year of the procedure if the procedure involved an implant.
- Facilities will be required to report surgical site infections back to the originating facility, if identified.
- Originating facility will be required to report the SSI, using NHSN.



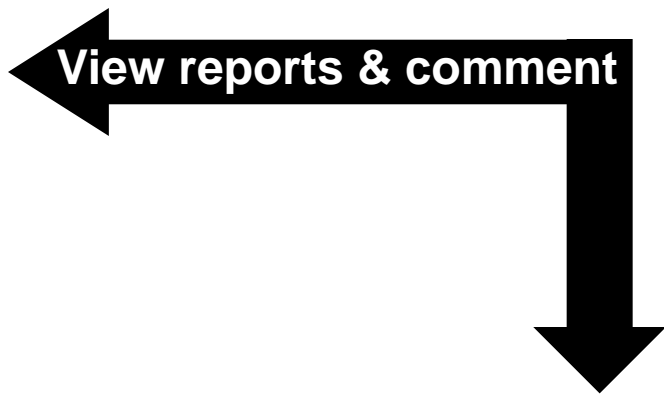
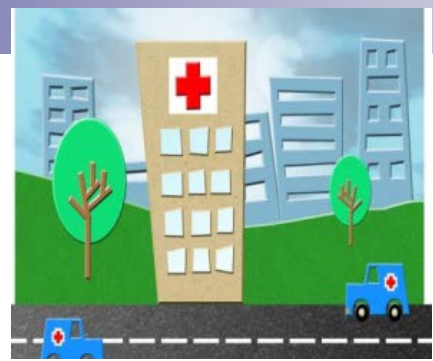
What to Report?

<http://www.cdc.gov/nhsn/PDFs/pscManual/9pscSSIcurrent.pdf>

Texas Health Care-Associated Infections Reporting			
http://www.cdc.gov/nhsn/PDFs/pscManual/9pscSSIcurrent.pdf			
PHASE	HAI	Facility Type/Unit	Start Date
1st	Central Line-Associated Blood Stream Infection (CLABSI)	PEDIATRIC and ADULT General Hospital ICUs	Now Reportable
	Knee Prosthesis (KPRO) and related SSI	ADULT General Hospitals and ASCs	Now Reportable
	Ventricular Shunt (VSHN) and related SSI	PEDIATRIC General Hospitals	Now Reportable
2nd (in addition to 1st phase)	Hip Prosthesis (HPRO) and related SSI	ADULT General Hospitals and ASCs	Now Reportable
	Coronary Artery Bypass Graft with both chest and donor site incisions (CBGB) and related SSI	ADULT General Hospitals and ASCs	Now Reportable
	Coronary Artery Bypass Graft with chest incision only (CBGC) and related SSI	ADULT General Hospitals and ASCs	Now Reportable
	Cardiac Surgery (CARD) and related SSI	PEDIATRIC General Hospitals	Now Reportable
	Heart Transplant (HTP) and related SSI	PEDIATRIC General Hospitals	Now Reportable
3rd (in addition to 2nd phase)	Vaginal Hysterectomy (VHYS) and related SSI	ADULT General Hospitals and ASCs	January 1, 2013
	Abdominal Hysterectomy (HYST) and related SSI	ADULT General Hospitals and ASCs	January 1, 2013
	Colon Surgery (COLO) and related SSI	ADULT General Hospitals and ASCs	January 1, 2013
	Peripheral Vascular Bypass Surgery (PVBY) and related SSI	ADULT General Hospitals and ASCs	January 1, 2013
	Carotid Endarterectomy (CEA) and related SSI	ADULT General Hospitals and ASCs	January 1, 2013
	Abdominal Aortic Aneurism repair (AAA) and related SSI	ADULT General Hospitals and ASCs	January 1, 2013
	Spinal Fusion (FUSN) and related SSI	PEDIATRIC General Hospitals	January 1, 2013
	Refusion of Spine (RFUSN) and related SSI	PEDIATRIC General Hospitals	January 1, 2013
	Lamenectomy (LAM) and related SSI	PEDIATRIC General Hospitals	January 1, 2013

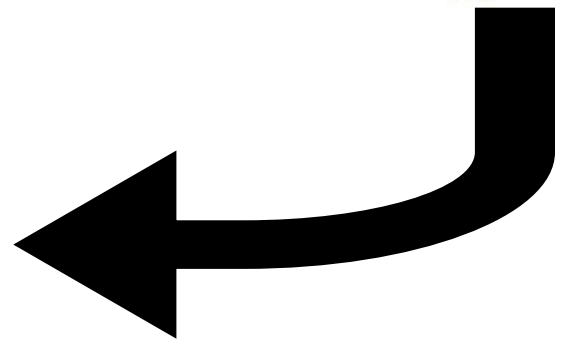
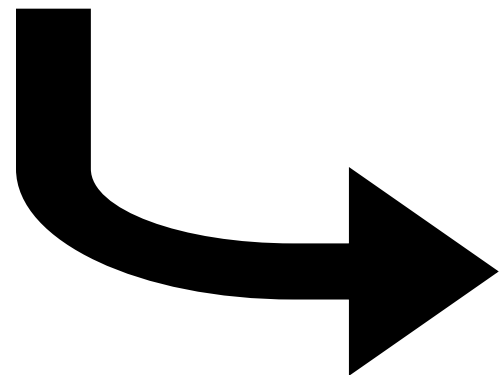


HAI Reporting



Hospital Compare - A quality tool for adults, including people with

CMS





Texas' Reporting Time Line

Reporting Quarter	Q1: Jan 1 – Mar 31	H1: Jan 1 – June 1	Q3: July 1 – Sept 30	H2: July 1 – Dec 31
Data submission deadline (facility enters data into NHSN)	According to NHSN rules: ~within 30 days of end of reporting month			
Departmental data reconciliation (Data from NHSN –emails facility contacts ~15th)	1-Jun	1-Sep	1-Dec	1-Mar
Facility data corrections due (in NHSN)	30-Jun	30-Sep	31-Dec	31-Mar
DSHS data summary to facilities (DSHS sends email to contacts)	NA	15-Oct	NA	15-Apr
Facility comment period (Facility enters comments into TxHSN)	NA	30-Oct	NA	30-Apr
DSHS review of comments	NA	15-Nov	NA	15-May
Public posting of summary (with approved comments)	NA	1-Dec	NA	1-Jun



Reporting Preparation

- Enroll your facility in NHSN using CMS Provider #
 - Complete training at <http://www.cdc.gov/nhsn/training/>
- Establish facility contacts for communication with Texas: Select a primary and secondary contact responsible for coordinating communications related to data submissions, verifications and approval of data summary.
 - Complete training on HAITexas website (http://www.dshs.state.tx.us/idcu/health/infection_control/hai/reporting/)



Link to Legislation & Reporting Resources: www.HAITexas.org

The screenshot shows the Texas Department of State Health Services website. The main content area is titled "HEALTH CARE-ASSOCIATED INFECTIONS" and includes a Texas state icon. The text describes health care-associated infections (HAIs) and provides information on reporting requirements in Texas. A sidebar on the left lists various navigation options, and a "Sign Up for E-mail Updates" button is visible in the bottom right corner of the page content.

- HAI reporting updates
- Reporting Resources/Tools
- Sign up for email updates
- Email questions





Contact Information

- General Reporting Questions
 - HAITexas@dshs.state.tx.us
- Reporting/TXHSN/NHSN Questions: David
 - David.Rhinehart@dshs.state.tx.us
 - 512.776.6878
- User Names/TxHSN Questions: Jessica
 - Jessica.Presley@dshs.state.tx.us
 - 512.776.6488

Important Websites:

- www.HAITexas.org
- www.cdc.gov/nhsn