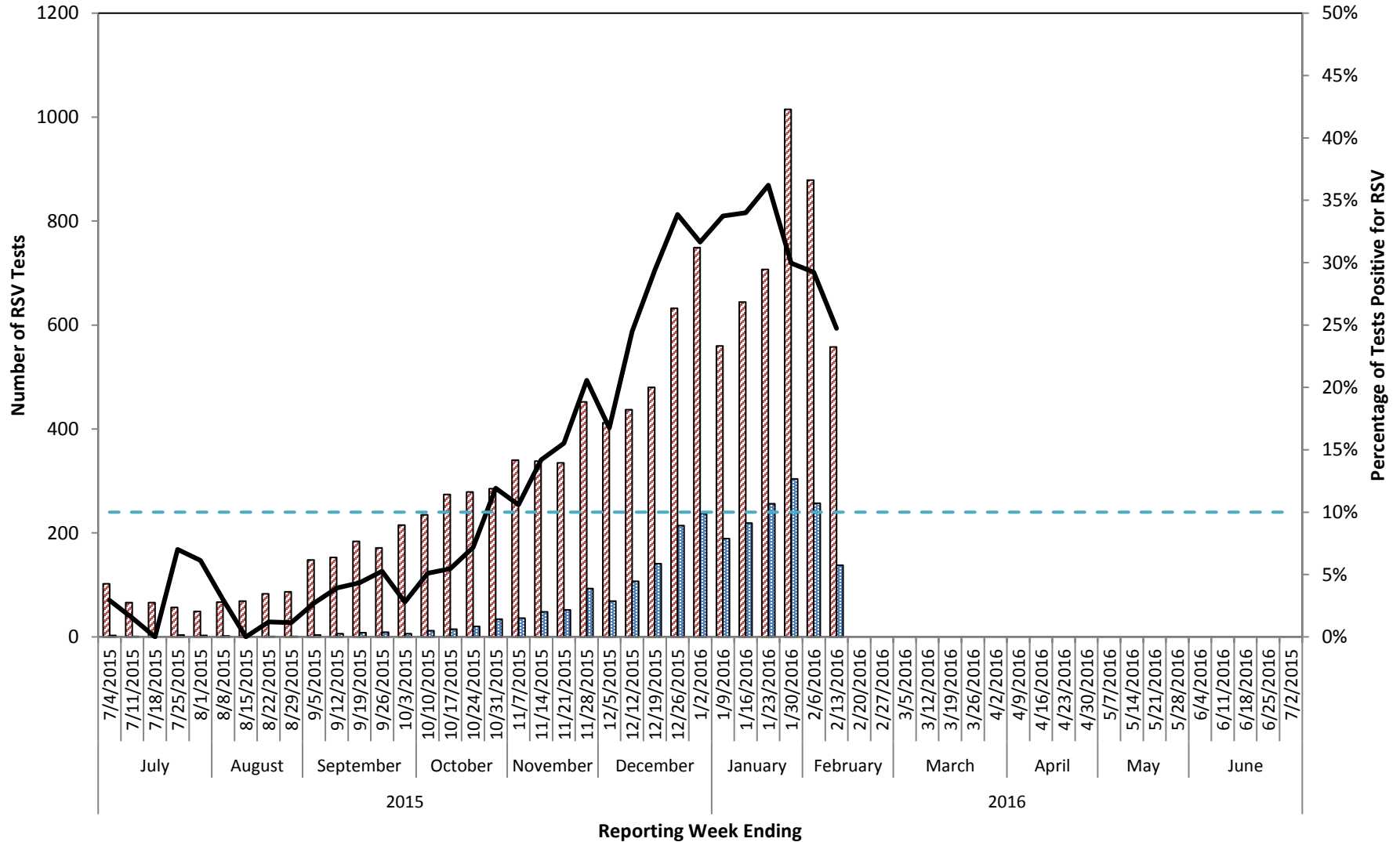


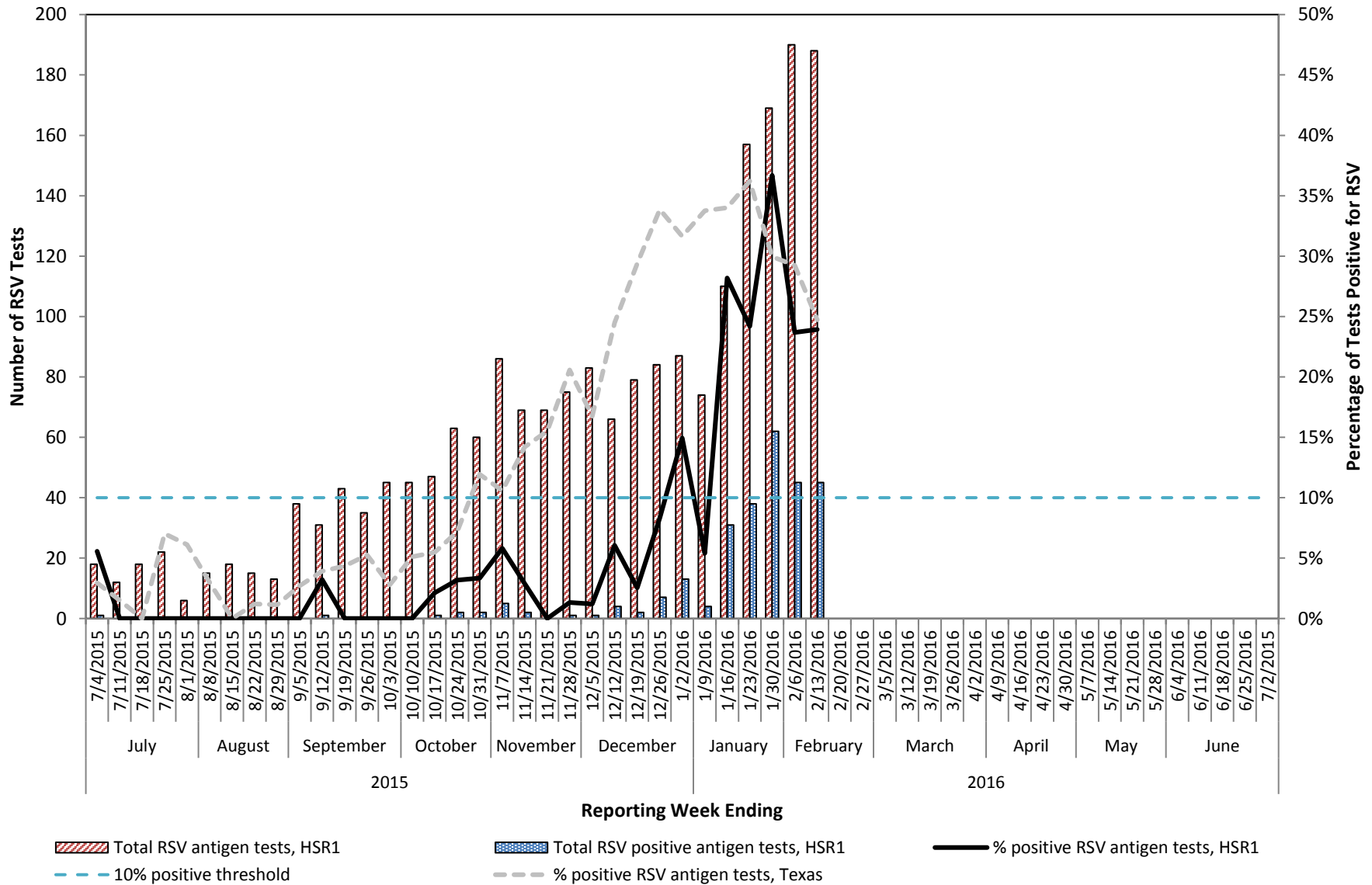
## Number and Percentage of Antigen Tests Positive for Respiratory Syncytial Virus (RSV) All Texas Sites, 2015-2016



Total RSV antigen tests, Texas
  Total RSV positive antigen tests, Texas
  % positive RSV antigen tests, Texas
  10% positive threshold

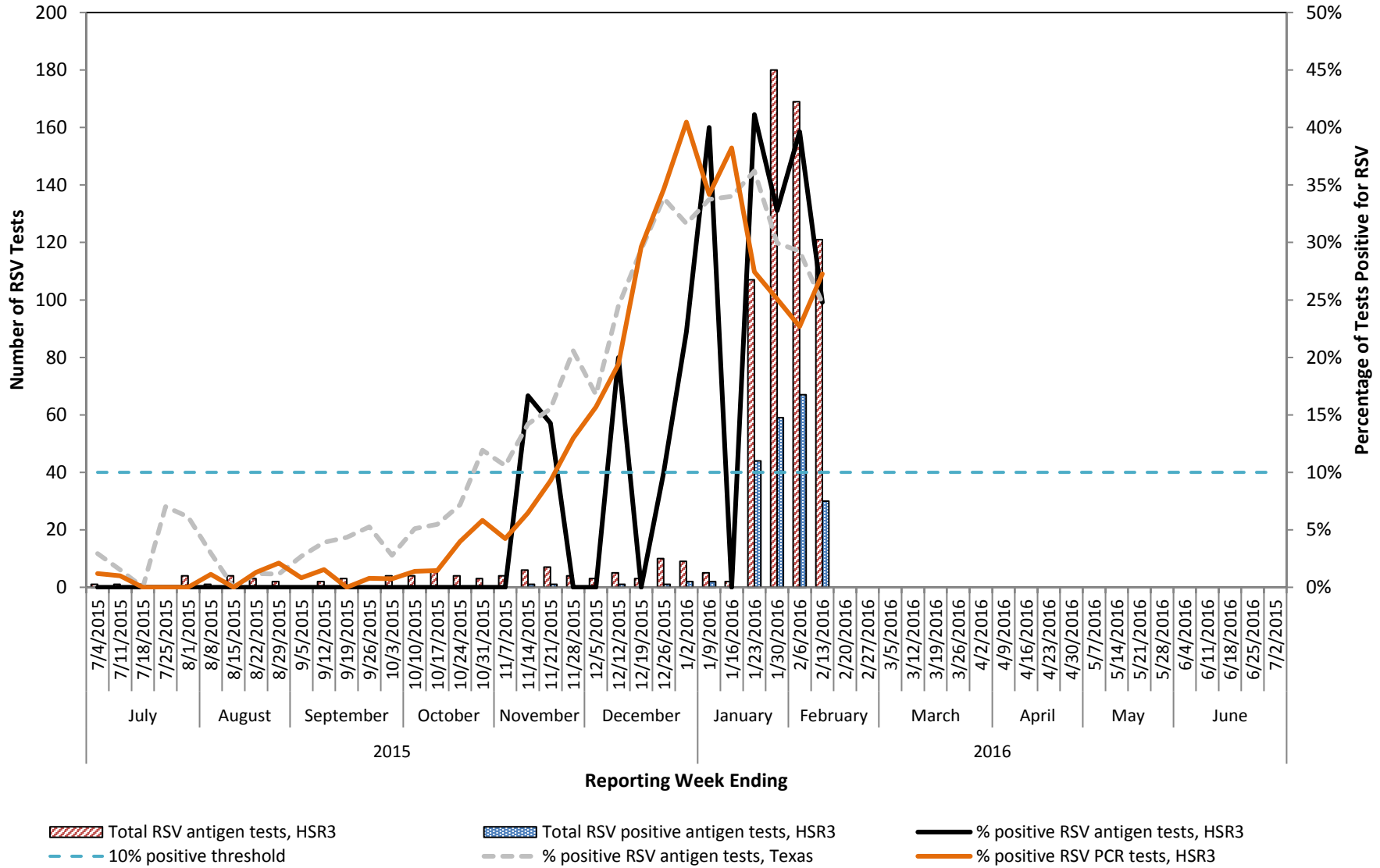
*The start of RSV season is the first of two consecutive weeks with  $\geq 10\%$  of tests positive, and the end is the last of two consecutive weeks with  $\geq 10\%$  of tests positive.*

## Number and Percentage of Antigen Tests Positive for Respiratory Syncytial Virus (RSV) Health Service Region 1 (High Plains/Panhandle), 2015-2016 Season



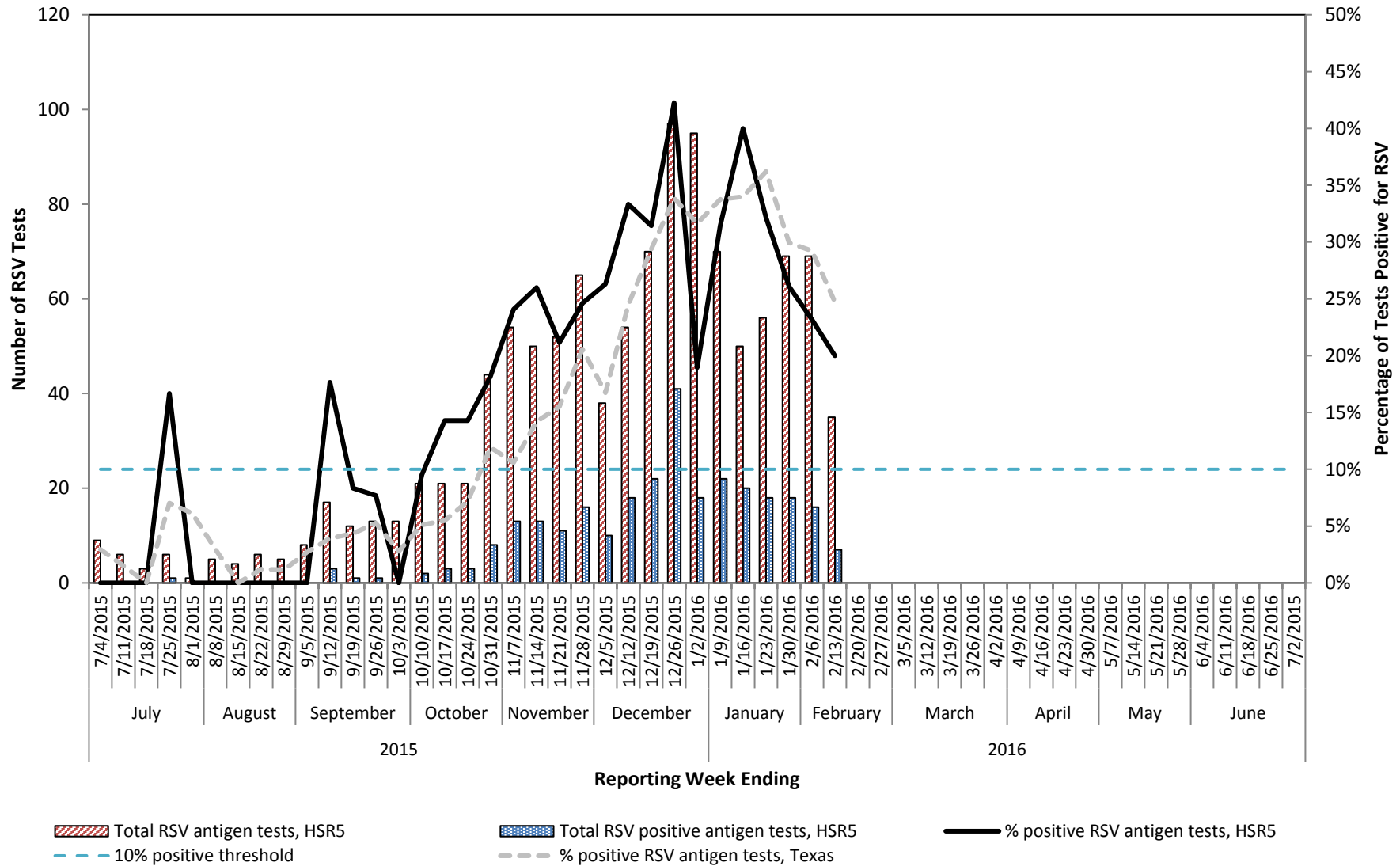
*Regional-level results may not be reliable if the number of RSV tests performed each week is small or if reporting is inconsistent.*

## Number and Percentage of Tests Positive for Respiratory Syncytial Virus (RSV) Health Service Region 3 (DFW Metroplex), 2015-2016 Season



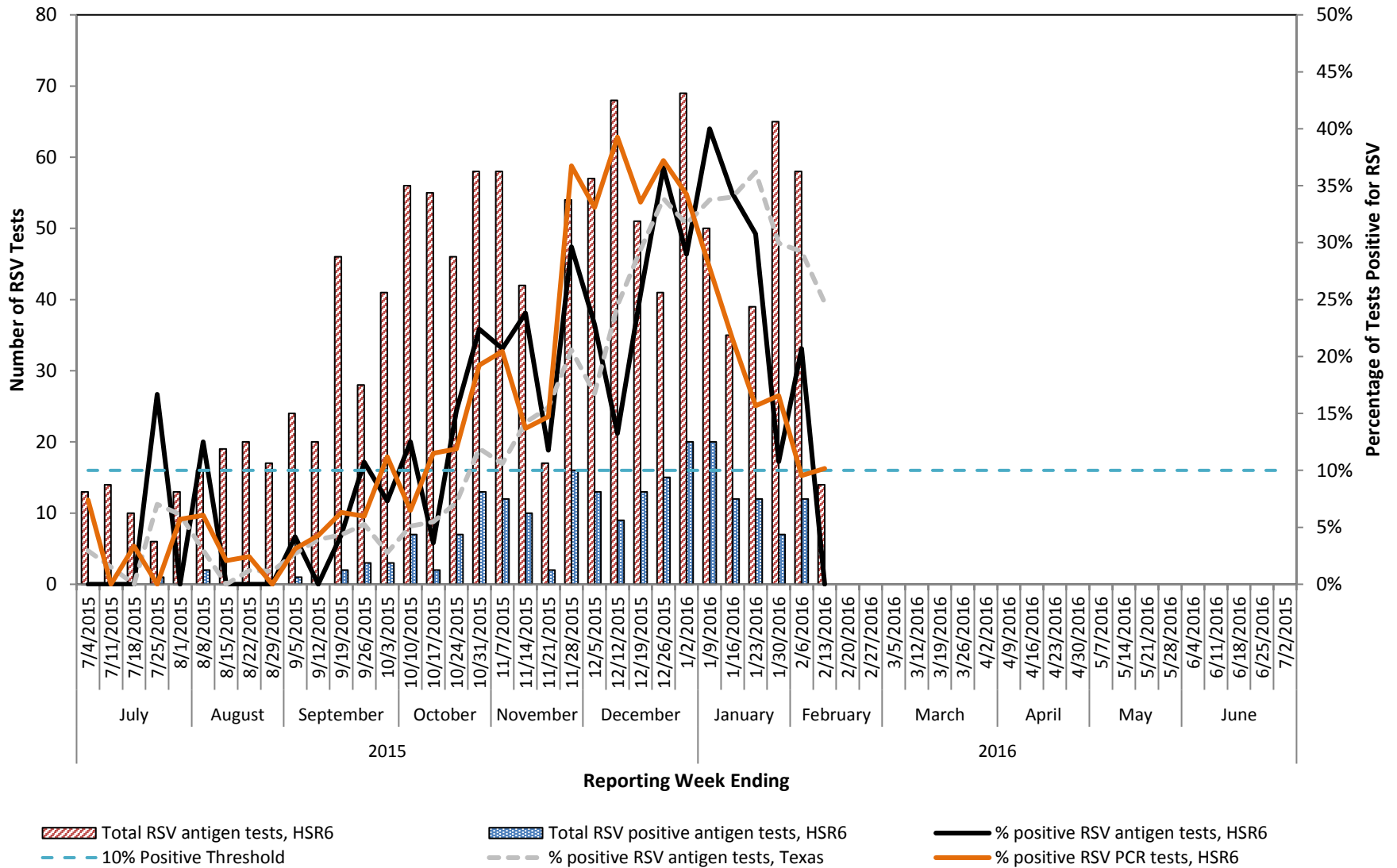
*Regional-level results may not be reliable if the number of RSV tests performed each week is small or if reporting is inconsistent.  
National and state RSV analyses typically rely on antigen test data. PCR testing for RSV is relatively new but is becoming more common.*

## Number and Percentage of Antigen Tests Positive for Respiratory Syncytial Virus (RSV) Health Service Region 5 (Southeast Texas), 2015-2016 Season



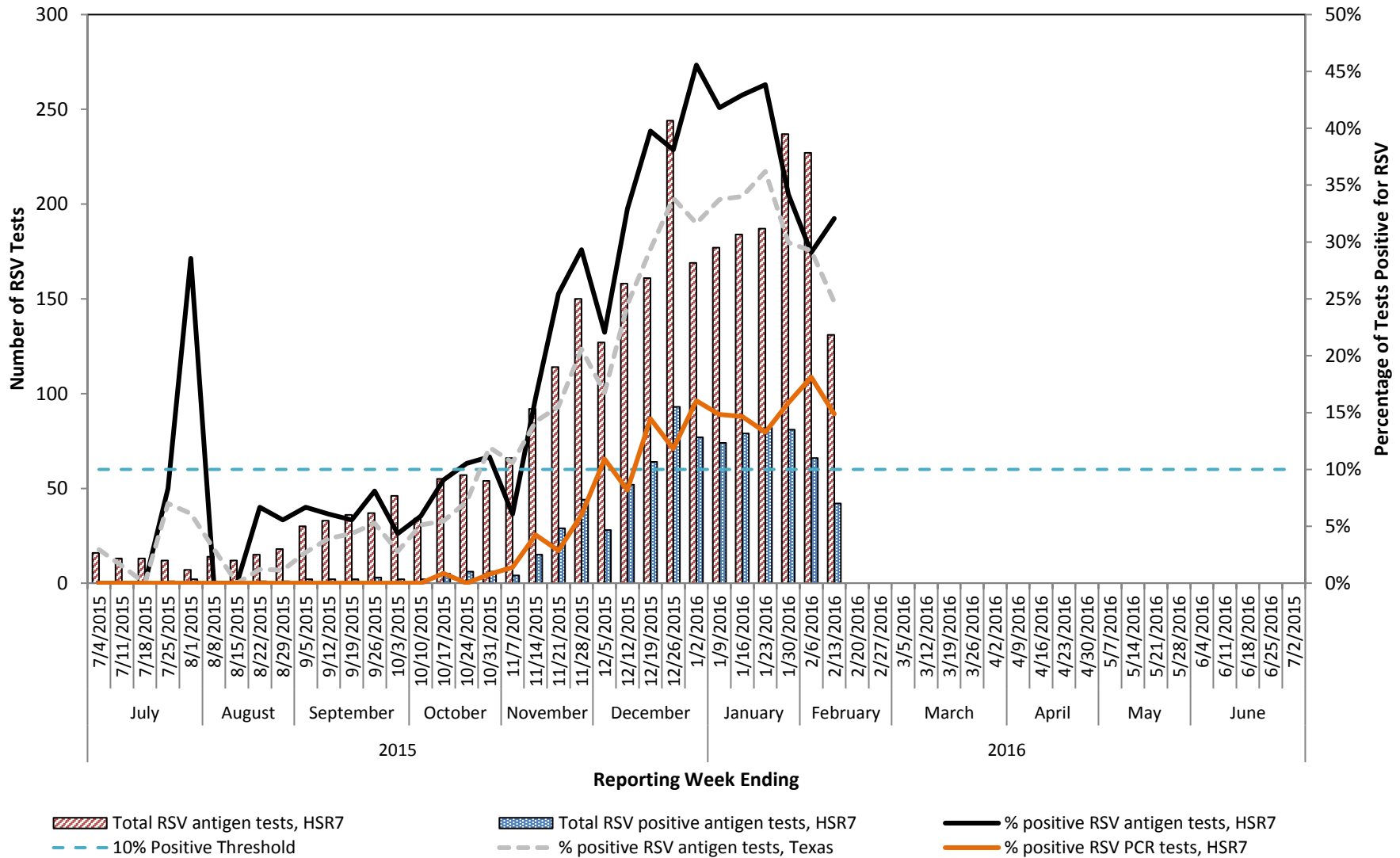
*Regional-level results may not be reliable if the number of RSV tests performed each week is small or if reporting is inconsistent.*

## Number and Percentage of Tests Positive for Respiratory Syncytial Virus (RSV) Health Service Region 6 (Gulf Coast/Houston), 2015-2016 Season



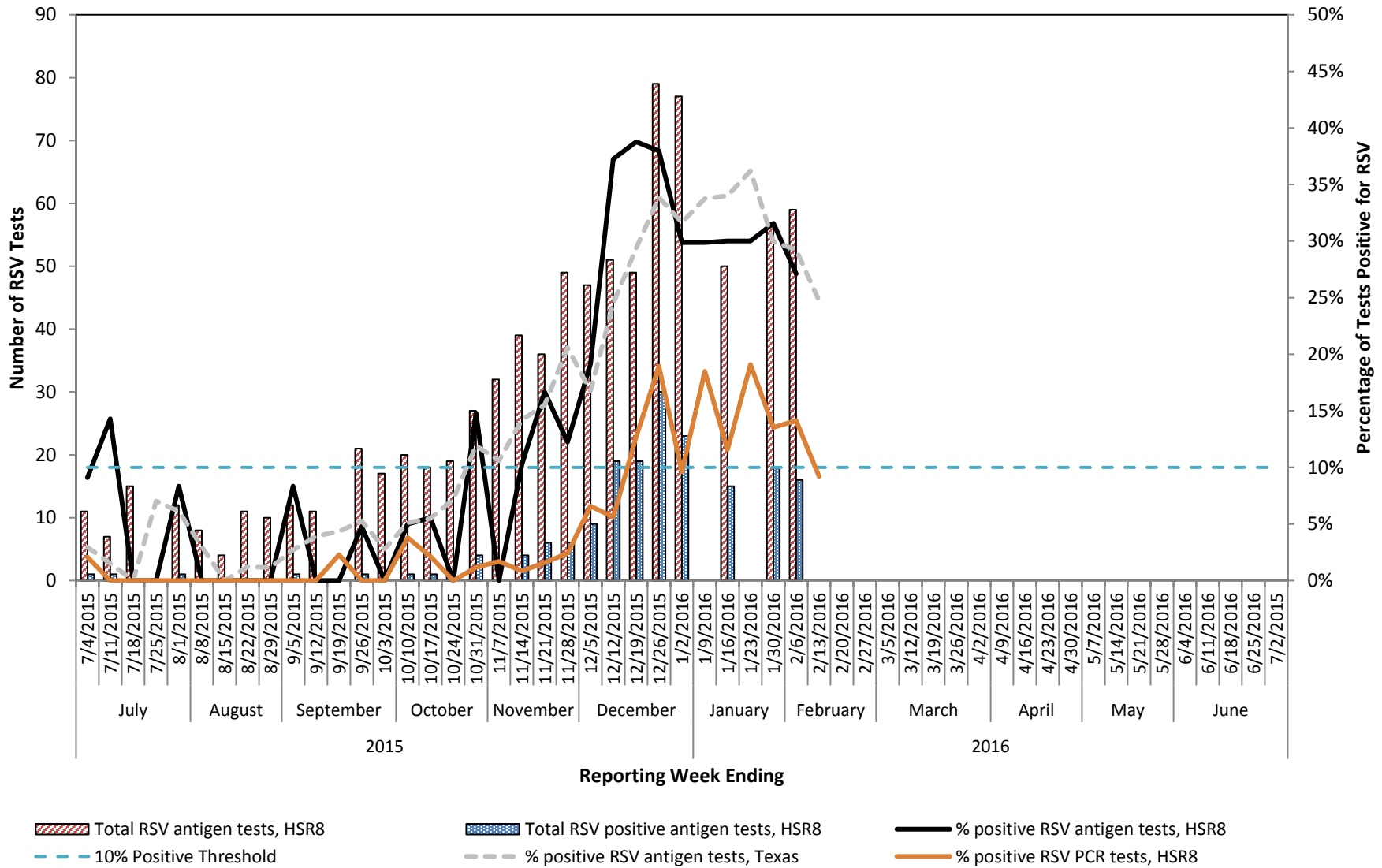
*Regional-level results may not be reliable if the number of RSV tests performed each week is small or if reporting is inconsistent. National and state RSV analyses typically rely on antigen test data. PCR testing for RSV is relatively new but is becoming more common.*

## Number and Percentage of Tests Positive for Respiratory Syncytial Virus (RSV) Health Service Region 7 (Central Texas), 2015-2016 Season



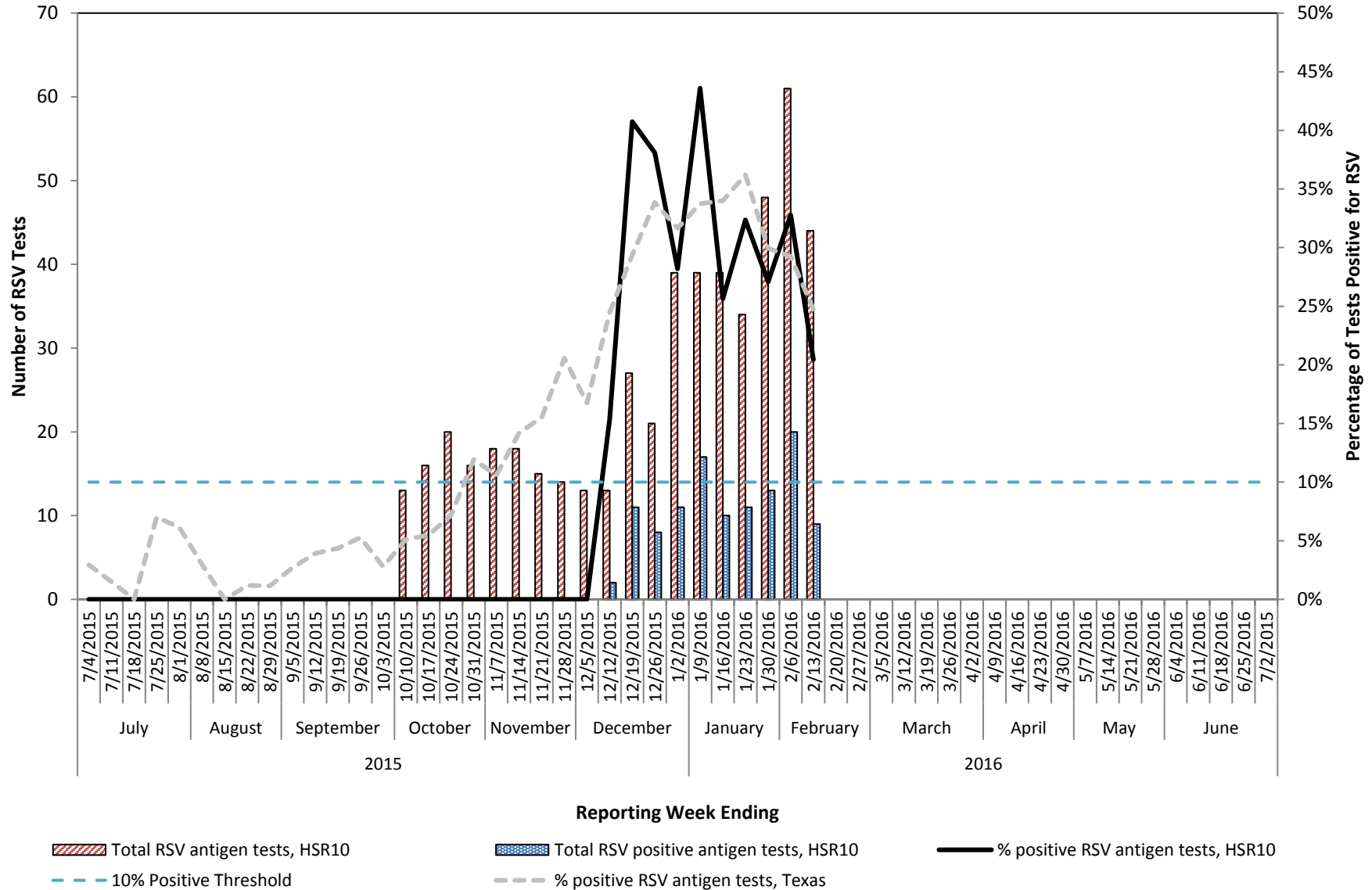
*Regional-level results may not be reliable if the number of RSV tests performed each week is small or if reporting is inconsistent.  
National and state RSV analyses typically rely on antigen test data. PCR testing for RSV is relatively new but is becoming more common.*

## Number and Percentage of Tests Positive for Respiratory Syncytial Virus (RSV) Health Service Region 8 (Upper South Texas), 2015-2016 Season



*Regional-level results may not be reliable if the number of RSV tests performed each week is small or if reporting is inconsistent.  
National and state RSV analyses typically rely on antigen test data. PCR testing for RSV is relatively new but is becoming more common.*

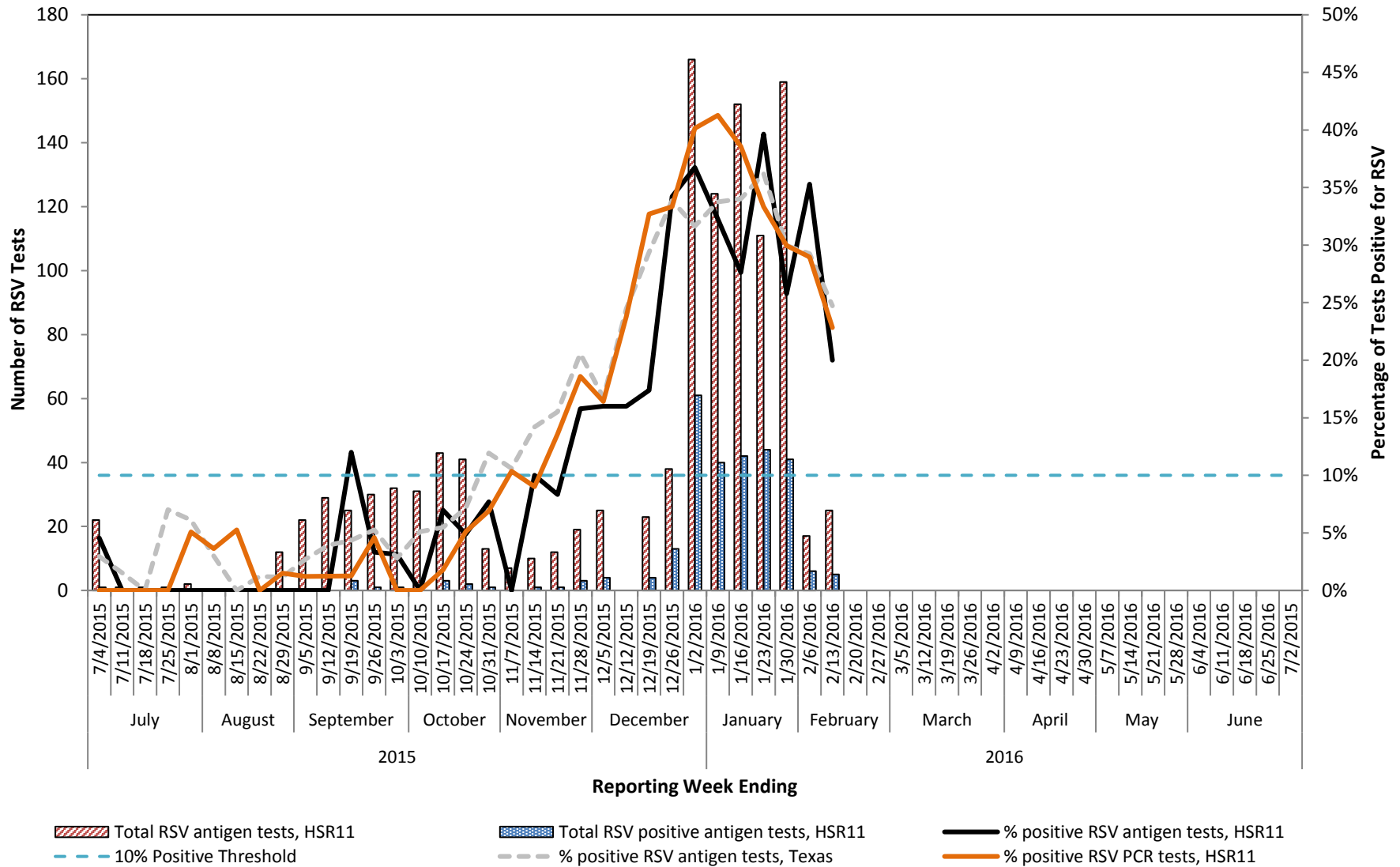
## Number and Percentage of Antigen Tests Positive for Respiratory Syncytial Virus (RSV) Health Service Region 10 (Upper Rio Grande/El Paso), 2015-2016 Season



*Regional-level results may not be reliable if the number of RSV tests performed each week is small or if reporting is inconsistent.*



## Number and Percentage of Tests Positive for Respiratory Syncytial Virus (RSV) Health Service Region 11 (Lower South Texas), 2015-2016 Season



*Regional-level results may not be reliable if the number of RSV tests performed each week is small or if reporting is inconsistent.  
National and state RSV analyses typically rely on antigen test data. PCR testing for RSV is relatively new but is becoming more common.*

# Texas Weekly RSV Report

## Reporting information and data caveats

The start of RSV season is the first of two consecutive weeks with  $\geq 10\%$  of tests positive, and the end is the last of two consecutive weeks with  $\geq 10\%$  of tests positive.

“The percentage of positive detections reflects test ordering practices and might not directly reflect disease burden.” *Centers for Disease Control and Prevention. Respiratory Syncytial Virus-United States, July 2007-June 2011. Morbidity and Mortality Weekly Report (MMWR). September 2011; 60 (35):1203-1206.*

National and state RSV analyses typically rely on antigen test data.

Regional-level results may not be reliable if the number of RSV tests performed each week is small or if reporting is inconsistent.

There are no RSV data reporters in Region 2 (North central/Northwest Texas), Region 4 (Upper East Texas), and Region 9 (West Texas/Midland/Odessa).

RSV is not a notifiable condition in Texas. Sentinel laboratories voluntarily enter their RSV data weekly into the CDC National Respiratory and Enteric Virus Surveillance System (NREVSS), and these data are compiled to create the Texas Weekly RSV Report.