

Surveillance

[En Español](#)


Influenza
(Flu)

ICD-9 487; ICD-10 J10,11

Related Topics: [Protecting Yourself During the Cold and Flu Season](#), [Avian Flu](#), [Vaccine Preventable Diseases](#) and [SARS](#)

2007 - 2008 Texas Influenza Surveillance Information

Influenza Surveillance Report for MMWR Week 15

The influenza (flu) activity level for Texas for the week ending April 12, 2008 was "local." Local activity indicates that a single region of the state had increased influenza-like illness (ILI) and recent culture-confirmed influenza. During week 15, 43 (11.6%) specimens tested by NREVSS laboratories in Texas were positive for influenza. The percentage of visits due to influenza-like illness (ILI) as reported by SPSN providers in Texas was below the regional baseline. Flu activity in Texas in week 15 continued to decrease in most regions.

Reports from Health Service Regions

Reports were received from all Health Service Regions (HSRs) for week 15. HSR 1 reported the same level of flu activity as week 14. All other regions reported a decrease in overall flu activity compared to week 14. For a map of Health Service Regions, please visit the following website:

<http://www.dshs.state.tx.us/regions/state.shtm>

Laboratory Results

During week 15, thirteen hospital laboratories and public health agencies across Texas reported conducting a total of 372 influenza tests (antigen, culture, and PCR) to the National Respiratory and Enteric Virus Surveillance System (NREVSS) sponsored by the Centers for Disease Control and Prevention (CDC). Of the 343 antigen detection tests performed, 18 were positive for influenza A/not subtyped and 24 were positive for influenza B. These results were reported from Bell, Bexar, Collin, Dallas, Ellis, Harris, Lubbock, Nueces, Tarrant, Webb, and Wilson counties. A total of nine reports of culture-confirmed influenza were received from the Texas Department of State Health Services (DSHS) Laboratory, Scott and White Hospital Laboratory, and Texas Children's Hospital Laboratory for the following counties:

Influenza A/H1	Influenza A/H3	Influenza A/not subtyped	Influenza B
(None)	(None)	(None)	Bell County
			Cameron County
			Harris County (6)
			Wichita County

Additional positive results from point-of-care rapid flu tests were reported by providers throughout the state (see Texas map below).

Antigenic Characterization

CDC has reported antigenic characterization results from 35 influenza isolates [8 influenza A/H1, 24 influenza A/H3, and 3 influenza B viruses] received from the DSHS Laboratory since the beginning of the 2007-08 flu season.

Influenza A/H1 [8]

- Eight (100%) of the eight viruses were characterized as A/Solomon Islands/3/2006, the influenza A/H1 component of the 2007–08 influenza vaccine for the Northern Hemisphere.

Influenza A/H3 [24]

- Two (8%) of the 24 viruses were characterized as A/Wisconsin/67/2005–like, the influenza A/H3 component of the 2007–08 influenza vaccine for the Northern Hemisphere.
- Twenty–one (88%) of the 24 viruses were characterized as A/Brisbane/10/2007–like. A/Brisbane/10/2007 is a recent antigenic variant which evolved from A/Wisconsin/67/2005–like.
- One (4%) of the 24 viruses showed somewhat reduced titers with antisera produced against A/Wisconsin/67/2005 and A/Brisbane/10/2007.

Influenza B (B/Victoria/02/87 and B/Yamagata/16/88 lineages) [3]**Victoria lineage [0]**

- The influenza B component for the 2007–08 influenza vaccine is a B/Malaysia/2506/2004–like virus, belonging to the B/Victoria lineage.

Yamagata lineage [3]

- Three (100%) of the three viruses were identified as belonging to the B/Yamagata lineage of viruses.

These results are very similar to national antigenic characterization results. The national results may be found in the CDC weekly flu report at <http://www.cdc.gov/flu/weekly/>. The DSHS Laboratory sends a representative sample of influenza viruses to the CDC throughout the flu season.

Influenza–Associated Pediatric Mortality

No influenza–associated pediatric fatalities were reported during week 15. As of week 15, Texas has reported seven influenza–associated pediatric deaths in the 2007–08 influenza season.

School Closures and Institutional Outbreaks

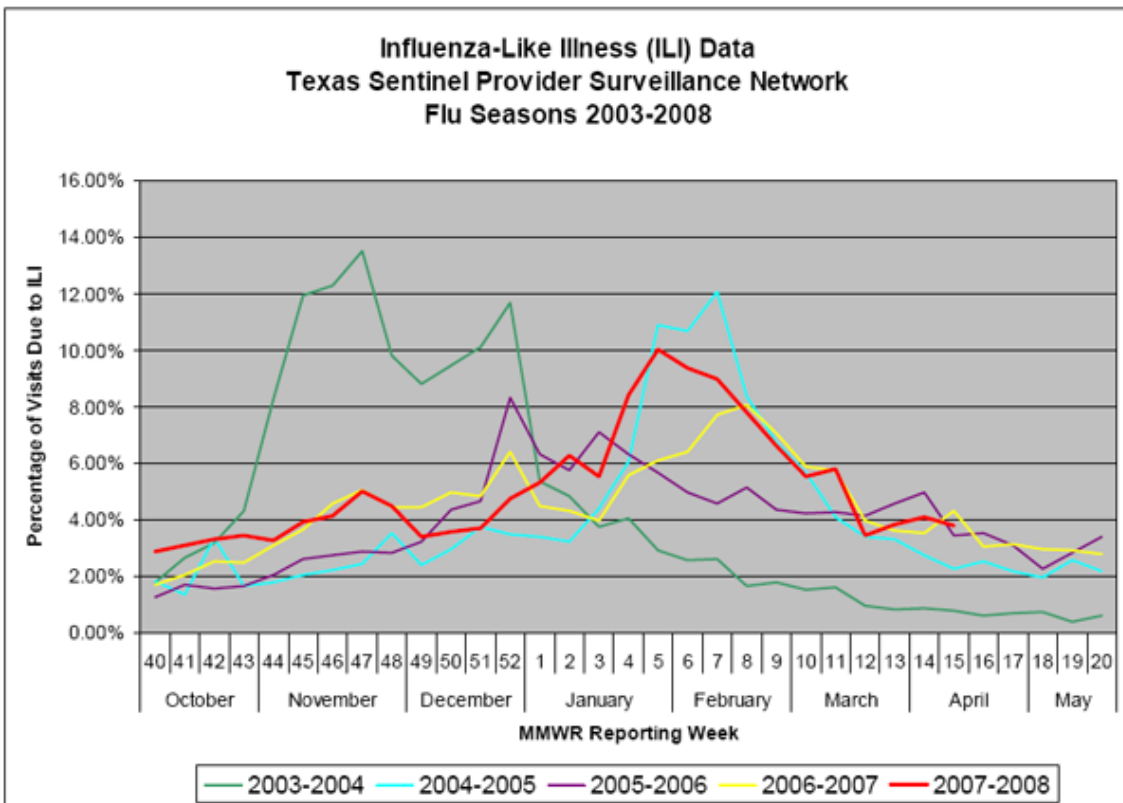
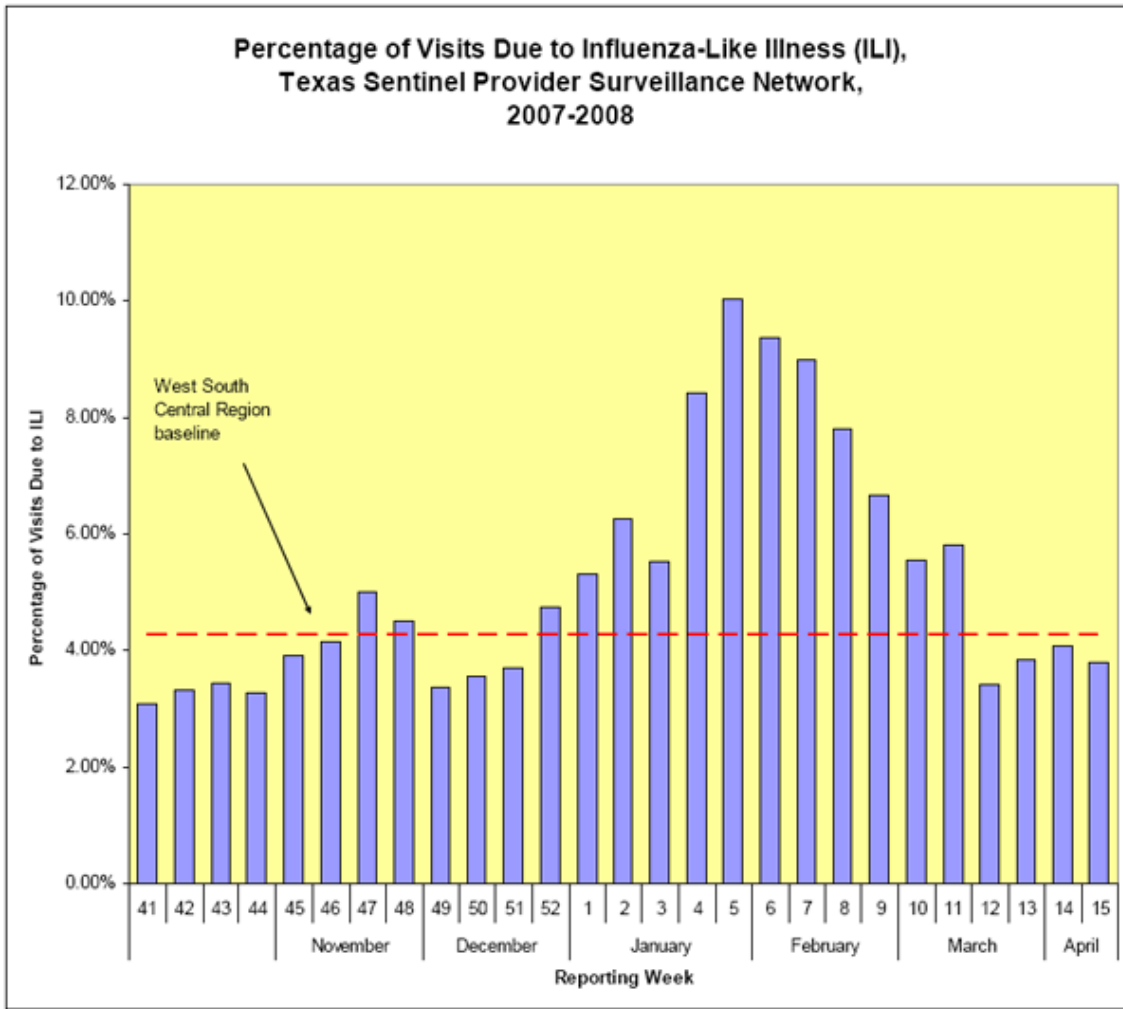
No school closures or institutional outbreaks were reported during week 15.

Sentinel Provider Surveillance Network

Sixty–four sentinel providers in Texas reported data to the U.S. Influenza Sentinel Provider Surveillance System (SPSN) on patients with influenza–like illness (ILI) and total patients seen for any reason during week 15; of those, 32 (50%) providers saw at least one patient with ILI. Of all patient visits during this week, 3.79% were due to ILI. The ILI baseline for the West South Central Region (Arkansas, Louisiana, Oklahoma, and Texas) of the United States is 4.3% for the 2007–2008 season. The baseline is the mean percentage of patient visits for ILI during non–influenza weeks for the previous three seasons plus two standard deviations.

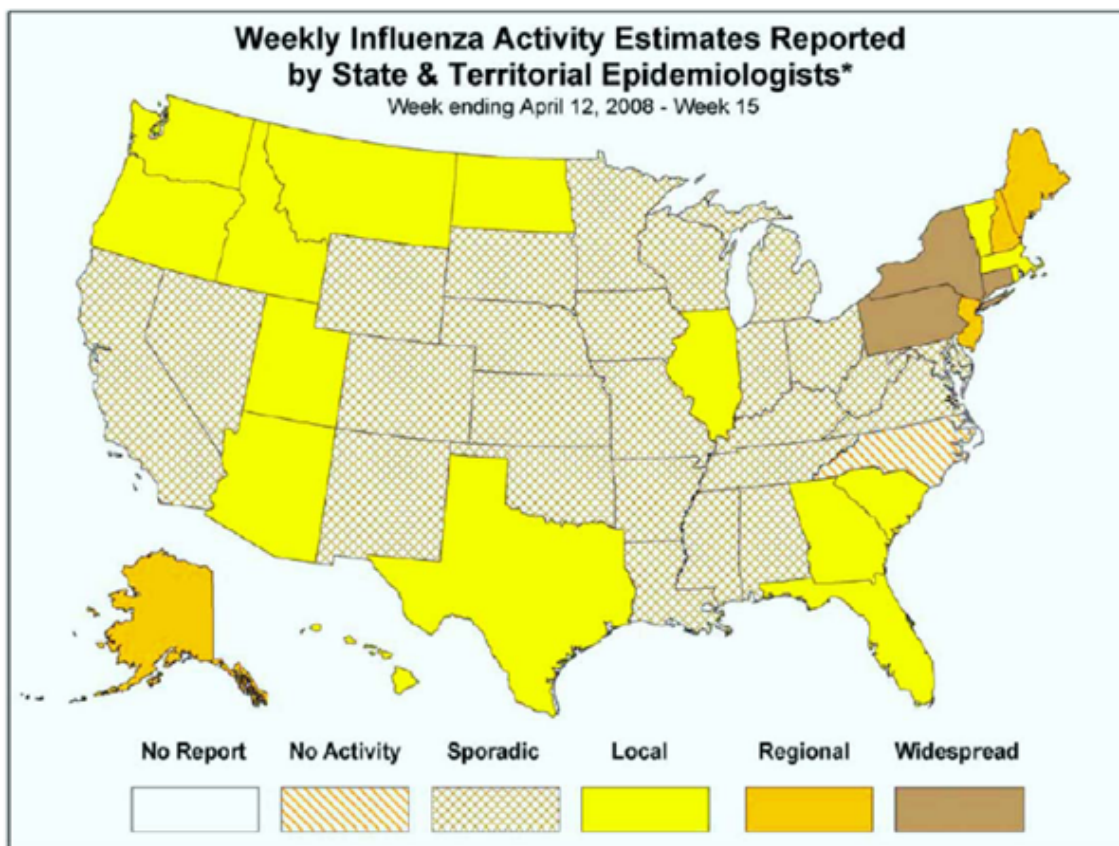
Percentage of Influenza–Like Illness (ILI) Reported by Sentinel Providers in Texas as of (4/23/2008 9:44:48 AM)								
Week	# Reporting	Age 0-4	Age 5-24	Age 25-64	Age over 64	Total ILI	Total Patients	% ILI
2007-40	84	256	163	151	49	619	21410	2.89
2007-41	88	264	255	207	58	784	25255	3.10
2007-42	86	274	270	261	50	855	25776	3.32
2007-43	85	368	290	208	47	913	26428	3.45
2007-44	95	391	276	206	55	928	28213	3.29

2007-45	87	411	314	243	39	1007	25665	3.92
2007-46	79	442	306	215	65	1028	24713	4.16
2007-47	91	478	317	272	73	1140	22748	5.01
2007-48	84	506	298	299	74	1177	26193	4.49
2007-49	84	232	290	162	16	700	20713	3.38
2007-50	80	256	265	128	16	665	18711	3.55
2007-51	68	169	197	186	26	578	15597	3.71
2007-52	77	176	201	191	22	590	12436	4.74
2008-01	90	217	302	332	29	880	16520	5.33
2008-02	97	373	500	630	117	1620	25891	6.26
2008-03	81	289	518	370	36	1213	21940	5.53
2008-04	87	369	886	650	54	1959	23306	8.41
2008-05	96	601	1208	954	158	2921	29106	10.04
2008-06	96	557	1128	951	112	2748	28337	9.37
2008-07	100	529	1037	808	124	2498	27849	8.97
2008-08	99	423	789	769	92	2073	26573	7.80
2008-09	91	421	576	690	83	1770	26637	6.64
2008-10	91	344	466	494	80	1384	24965	5.54
2008-11	80	259	365	384	39	1047	18021	5.81
2008-12	79	156	168	112	125	461	13458	3.43
2008-13	86	186	244	292	24	746	19405	3.84
2008-14	84	307	260	308	77	952	23282	4.09
2008-15	64	263	221	236	86	806	21292	3.79



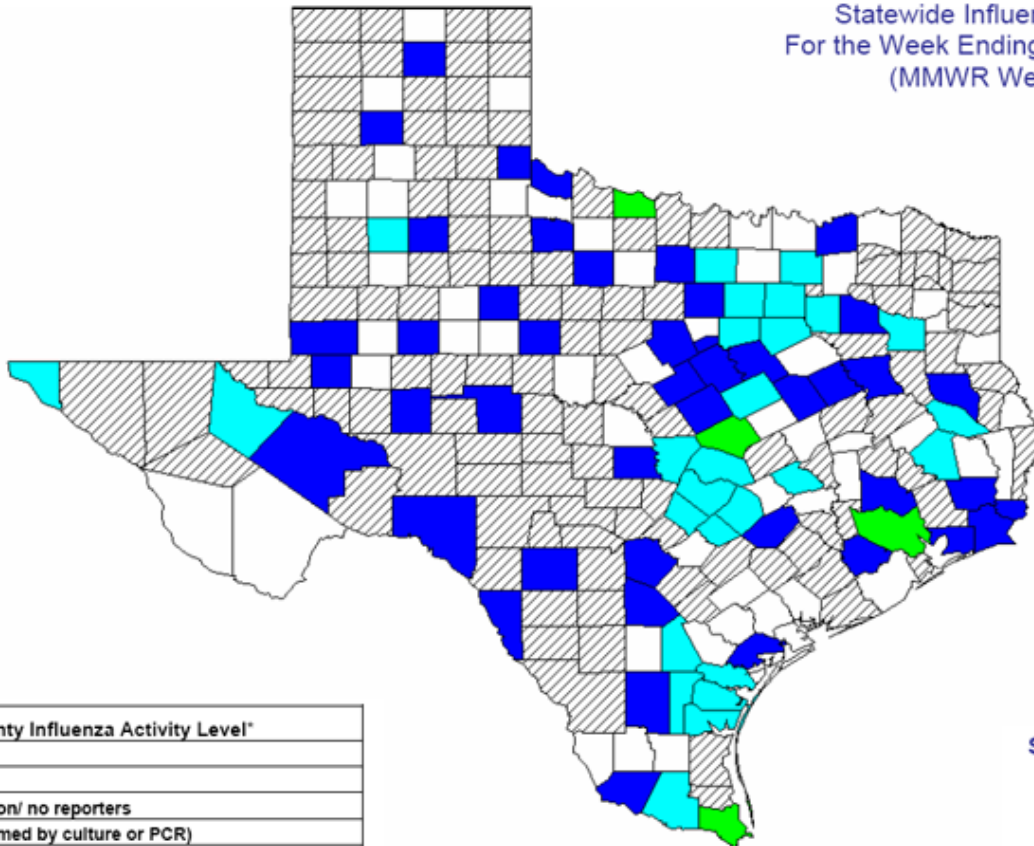
National Influenza Activity Map

The map showing influenza activity in the United States for MMWR week 15 is displayed below. The current U.S. flu weekly report may be found [here](#).



For more information on flu surveillance activities in the State of Texas, please visit our main [surveillance](#) page.

Statewide Influenza Activity
For the Week Ending April 12, 2008
(MMWR Week 15)



County Influenza Activity Level*	
	No activity
	No report
	No information/ no reporters
	Flu A (confirmed by culture or PCR)
	Flu B (confirmed by culture or PCR)
	Flu A and B (confirmed by culture or PCR)
	Rapid test positive flu
	Influenza-like illness only (no laboratory confirmation)

State Activity Level as Reported to CDC

- Widespread
- Regional
- Local
- Sporadic
- No activity

*Influenza activity level corresponds to current MMWR week only and does not reflect previous weeks' activity.

Last Updated: Monday, April 28, 2008

Texas Department of State Health Services - Infectious Disease Control Unit
1100 West 49th Street, Suite T801, Mail Code: 1960 PO BOX 149347 - Austin, TX 78714-9347
(512) 458-7676 - Fax: (512) 458-7616 - E-Mail

[Topics A-Z / Site Map](#)