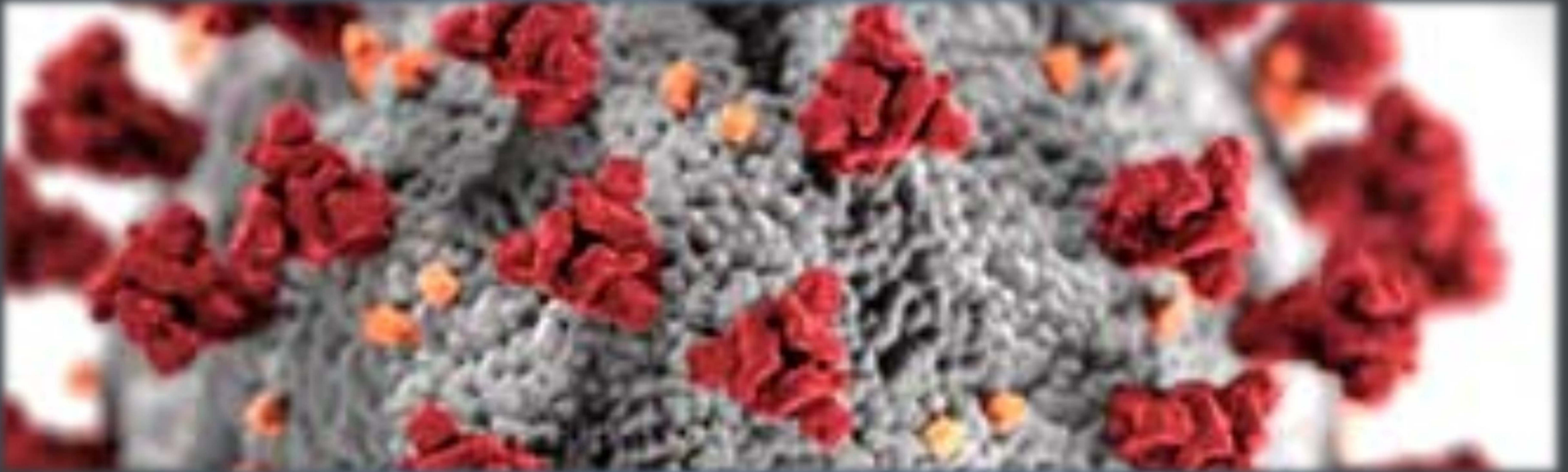




TEXAS
Health and Human
Services

**Texas Department of State
Health Services**

COVID-19 Update



February 22, 2022

John W. Hellerstedt, MD, Commissioner

Jennifer A. Shuford, MD, MPH, Chief State Epidemiologist

Texas Department of State Health Services



COVID-19 Snapshot



TEXAS
Health and Human
Services

Texas Department of State
Health Services

Snapshot: COVID-19 in Texas

As of February 22, 2022

- Total Cases:
 - 5,415,212
 - 7-day average for new daily cases is increasing
- Current Hospitalizations:
 - 4,970 (decreasing)
- Total Fatalities:
 - 82,627
 - 7-day average of new fatalities is slowly increasing
- Molecular Positivity Rate:
 - 7.40% (decreasing)



Overview of Pandemic Response

A look at the resources and coordination involved the DSHS response to the COVID-19 pandemic from Year 1 to current activities



Med Surge Staff
Deployed

30,788 total
4,833 currently



DME & Consumables
Deployed

54,093 total
5,380 currently deployed



Coordination

1/31/20: DSHS Activated
State Medical Operations
Center (SMOC)
3/19/2020: DSHS Public
Health Disaster
10/2020: Expert Vaccine
Allocation Panel (EVAP)
convened



COVID-19 Vaccines
Administered

42,326,320
since 12/14/2021



COVID-19 Trends



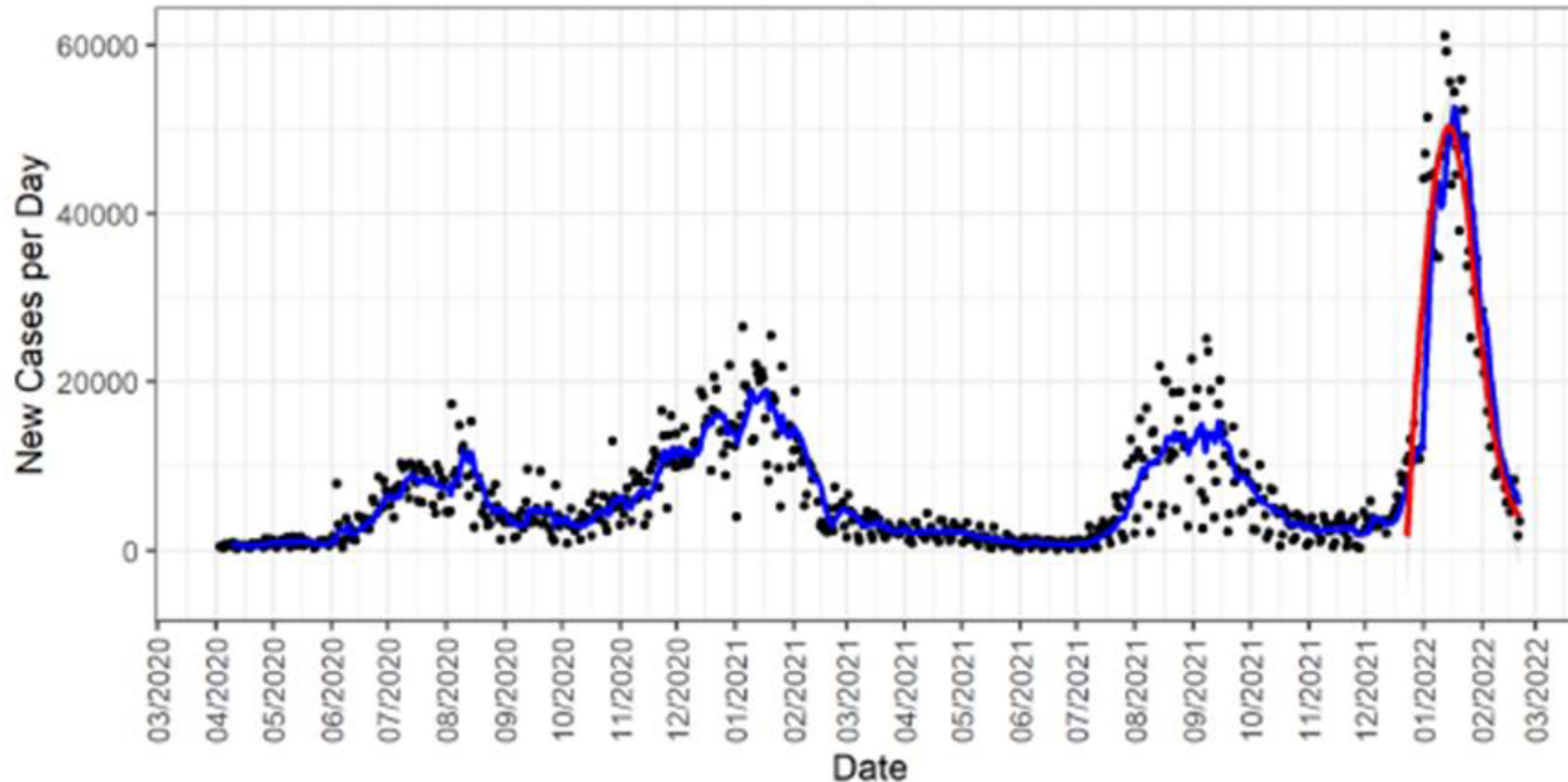
Overview: New Cases Per Day



Texas Department of State Health Services

Texas New Cases per Day

Pop: 29.7M; Slope: -382.4; 100k: -1.3; 7 Day Avg: 5,501.3; 7/14 Day Avg Δ : -537.5/-704.8



Blue line is 7 Day Moving Average. Δ is the change in the 7 Day Moving Average over a 7 or 14 day period.
These preliminary data are current as of 02/21/2022

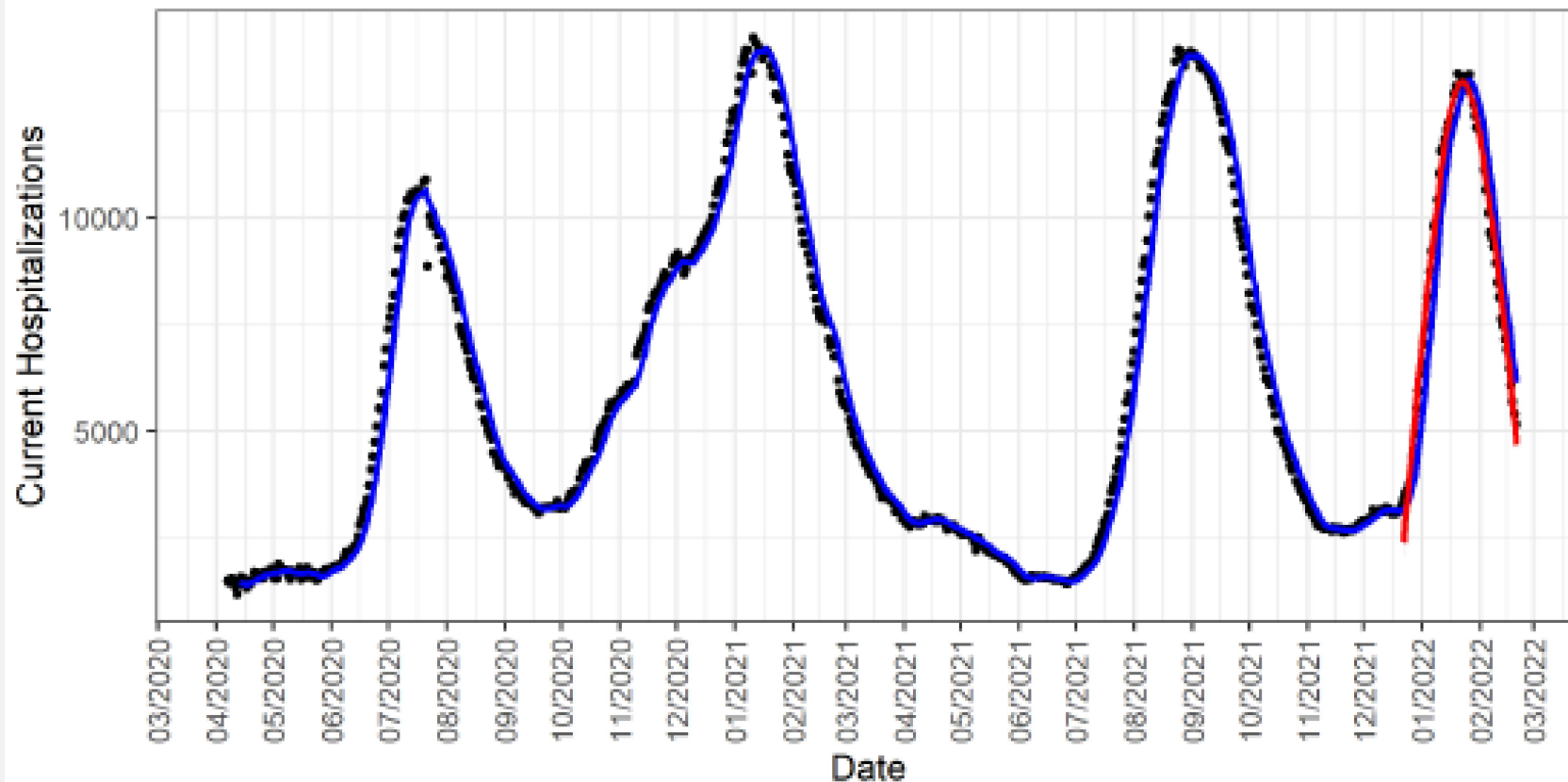
Overview: Hospitalizations



Texas Department of State Health Services

Texas Hospitalizations Over Time

Pop: 29.7M; Slope: -435.1; 100k: -1.5; 7 Day Avg: 6,120.3; 7/14 Day Avg Δ : -341/-348.1

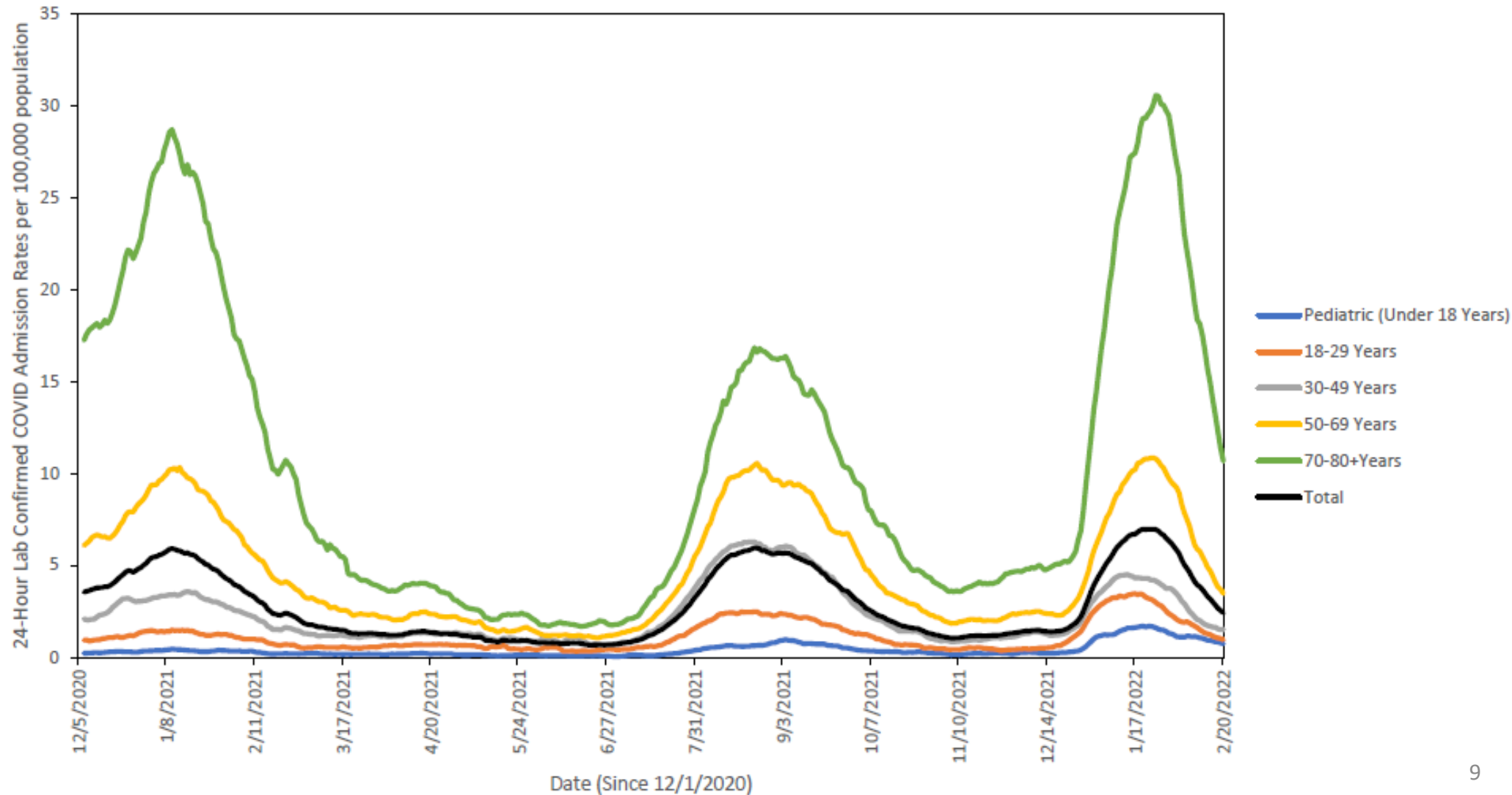


Blue line is 7 Day Moving Average. Δ is the change in the 7 Day Moving Average over a 7 or 14 day period.
These preliminary data are current as of Mon Feb 21 16:57:44 2022

**7-Day Rolling Average of 24-Hour Lab Confirmed COVID Hospital Admission Rate by Age per 100,000 population:
12/01/20 – 02/20/22**

Statewide:

**Statewide: 7-Day Rolling Average of 24-Hour Lab Confirmed COVID Hospital Admission Rate by Age per 100,000
population**



Texas Department of State Health Services

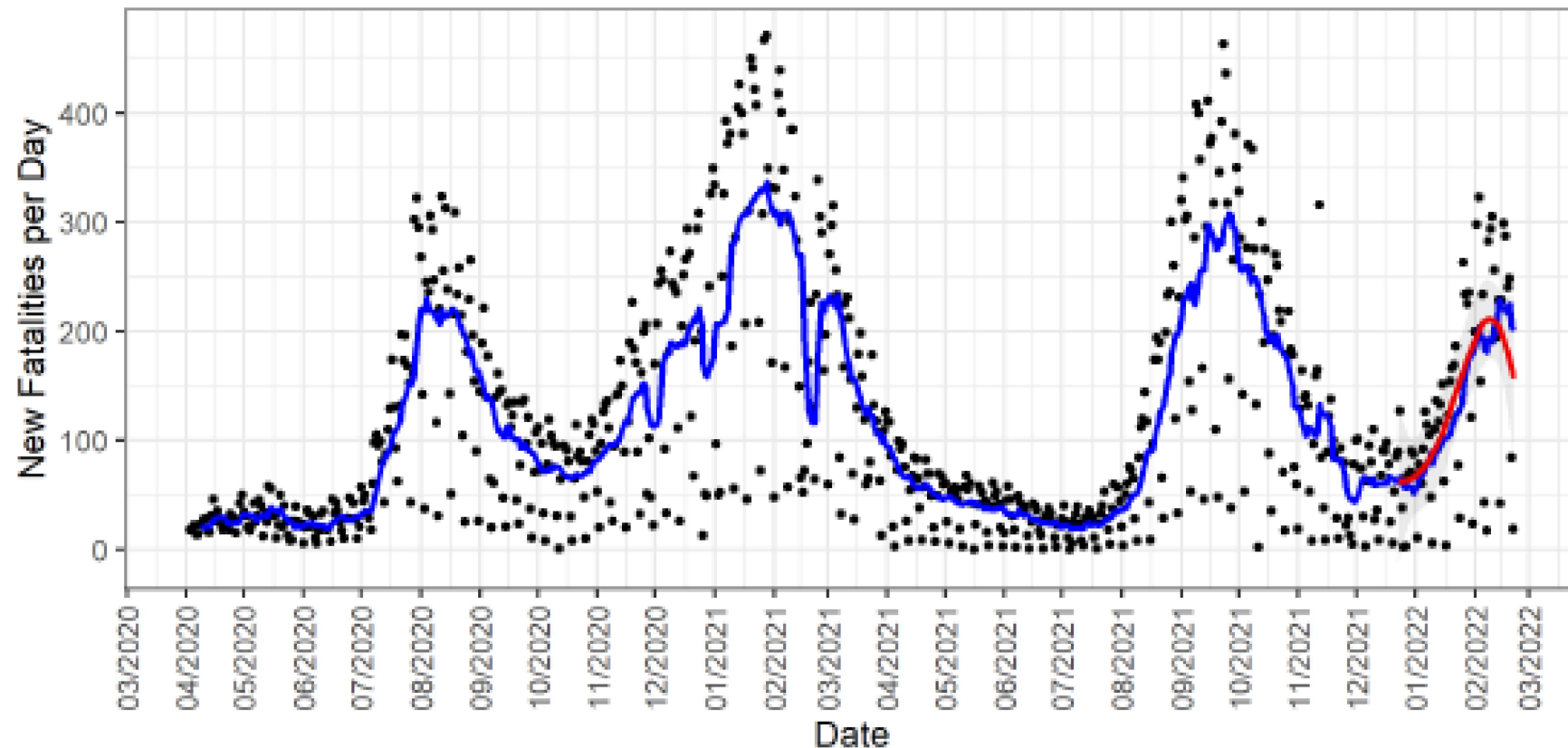
Overview: Fatalities Per Day



Texas Department of State Health Services

Texas New Fatalities per Day

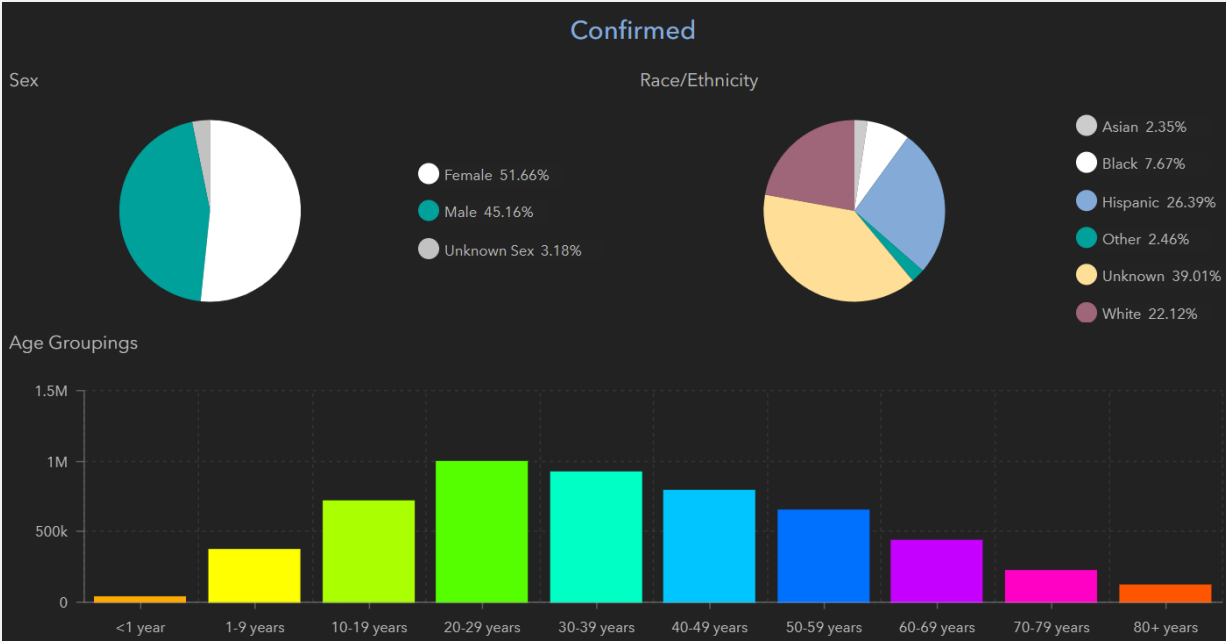
Pop: 29.7M; Slope: -6.7; 100k: 0; 7 Day Avg: 200.7; 7/14 Day Avg Δ : -3.2/1.6



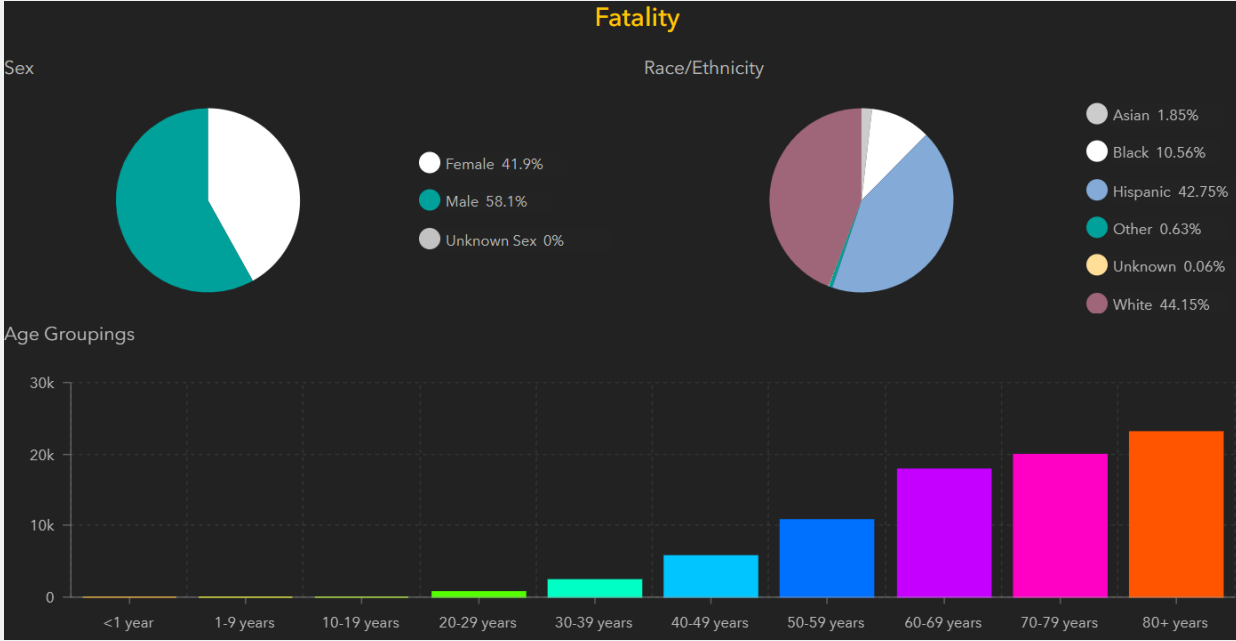
Blue line is 7 Day Moving Average. Δ is the change in the 7 Day Moving Average over a 7 or 14 day period.
Preliminary data as of 02/21/2022. Data source are New Fatalities by Date Recorded.
Last date of data is 02/21/2022

Demographic Data 2020 - 2021

Case Demographic Data

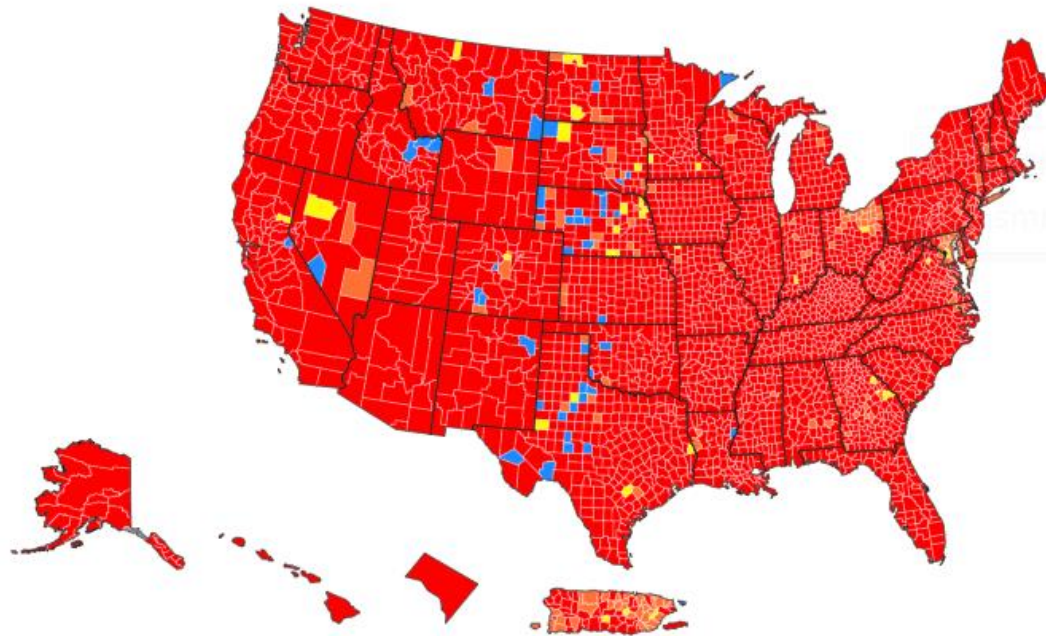


Fatality Demographic Data



COVID-19 Activity in US, 2/18/2022

+ -



Community Transmission in US by County

	Total	Percent	% Change
High	2984	92.61%	-5.52%
Substantial	152	4.72%	3.94%
Moderate	36	1.12%	0.87%
Low	49	1.52%	0.74%

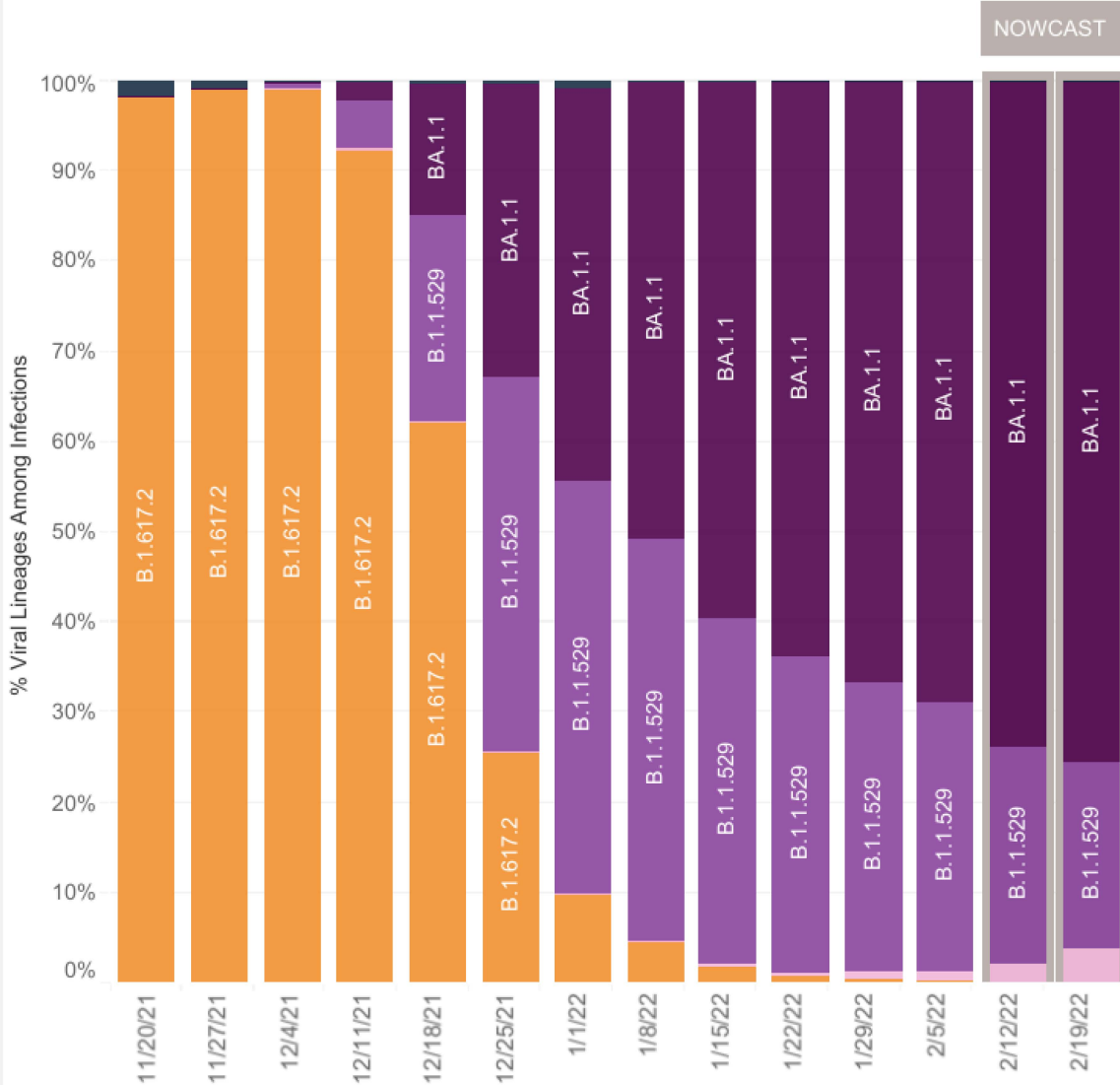
How is community transmission calculated?

● High ● Substantial ● Moderate ● Low ● No Data

Variants - National Data, 11/14/2021 – 2/19/2022

United States: 11/14/2021 – 2/19/2022

United States: 2/13/2022 – 2/19/2022 NOWCAST



USA				
WHO label	Lineage #	US Class	%Total	95%PI
Omicron	BA.1.1	VOC	75.6%	71.1-79.7%
	B.1.1.529	VOC	20.6%	16.7-25.1%
	BA.2	VOC	3.8%	3.0-4.8%
Delta	B.1.617.2	VOC	0.0%	0.0-0.0%
Other	Other*		0.0%	0.0-0.0%

* Enumerated lineages are US VOC and lineages circulating above 1% nationally in at least one week period. "Other" represents the aggregation of lineages which are circulating <1% nationally during all weeks displayed.

** These data include Nowcast estimates, which are modeled projections that may differ from weighted estimates generated at later dates

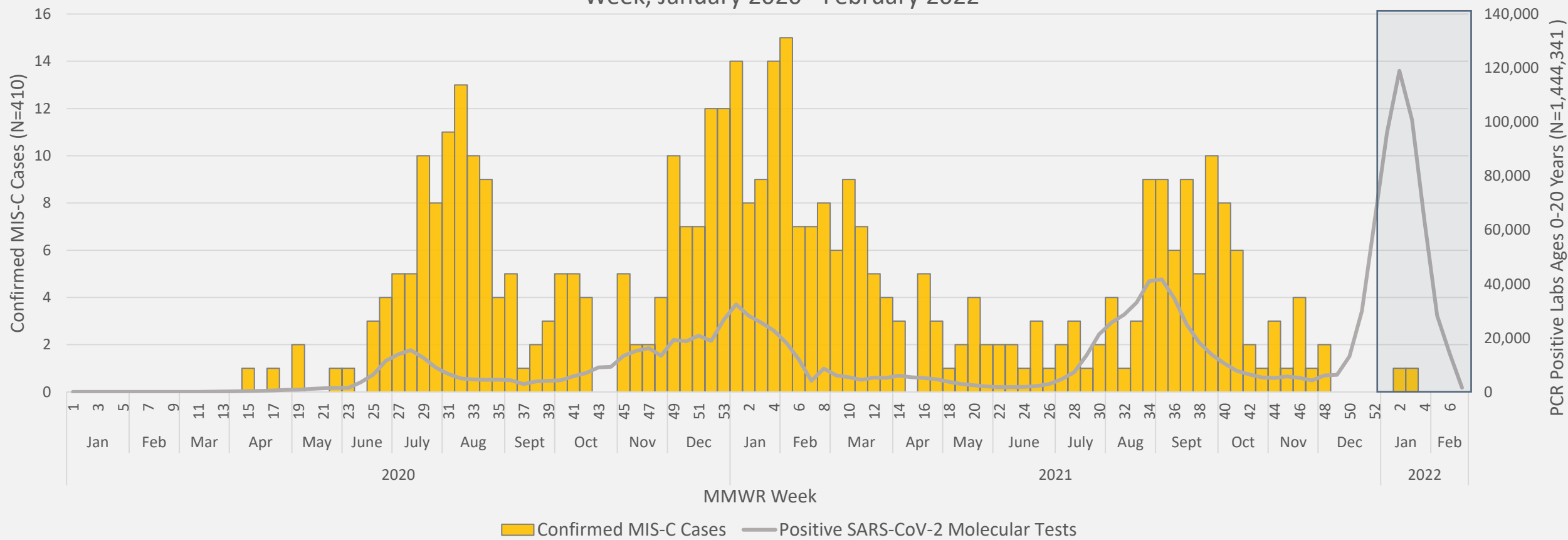
AY.1-AY.133 and their sublineages are aggregated with B.1.617.2. BA.1 and BA.3 are aggregated with B.1.1.529. For regional data, BA.1.1 is also aggregated with B.1.1.529, as it currently cannot be reliably called in each region.

Variants - Texas Data, 11/7/2021 – 2/12/2022



MIS-C Cases and COVID-19 Cases Among Children Ages 0-20 Years

MIS-C Cases by Fever Onset Date and Positive SARS-CoV-2 Molecular Tests for Children Ages 0-20 Years by MMWR Week, January 2020 - February 2022



Data source: MIS-C cases reported to Central Office by local health departments; National Electronic Disease Surveillance System (NEDSS) ELRs. As of 02/18/2022.

Notes: Data is provisional and subject to change. Grayed-out area in the figure represents most recent weeks where MIS-C reporting may be incomplete.

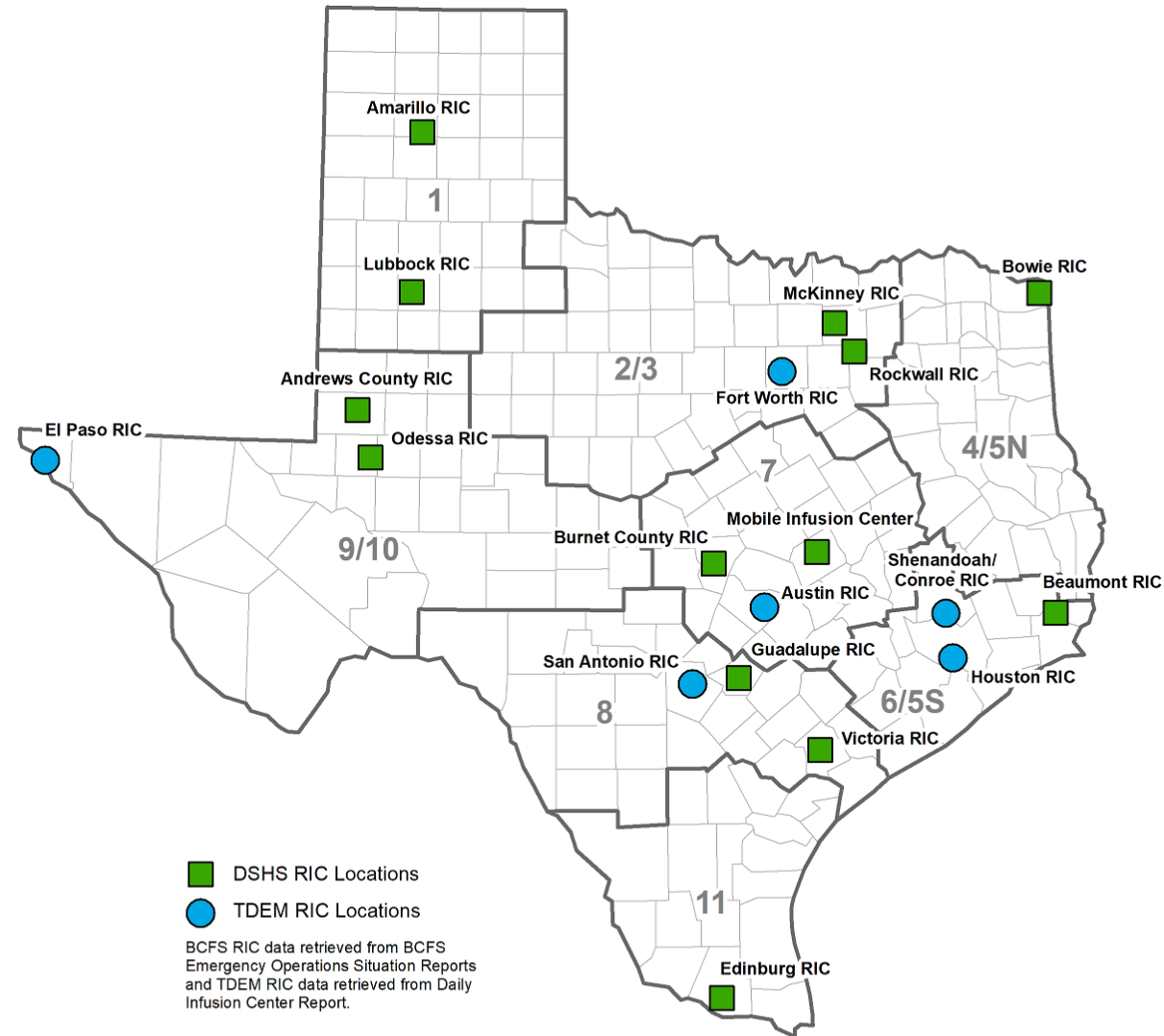


Therapeutics



Regional Infusion Centers (RICs)

- DSHS RICs:
 - 52,156 infusions administered since 8/2021
- State RICs
 - 122,435 total infusions administered at DSHS and TDEM RICs



Source: Texas Department of State Health Services, January 2022, AKleinert, VDesrosier

Therapeutics DSHS Orders & Allocates

- Two monoclonal antibody treatments for high-risk patients
 - Sotrovimab and Bebtelovimab
 - FDA issued an Emergency Use Authorization for Bebtelovimab on February 11, 2022
- Two oral antiviral treatments for high-risk patients
 - Paxlovid and Molnupiravir
- One pre-exposure monoclonal antibody for immunocompromised patients
 - Evusheld



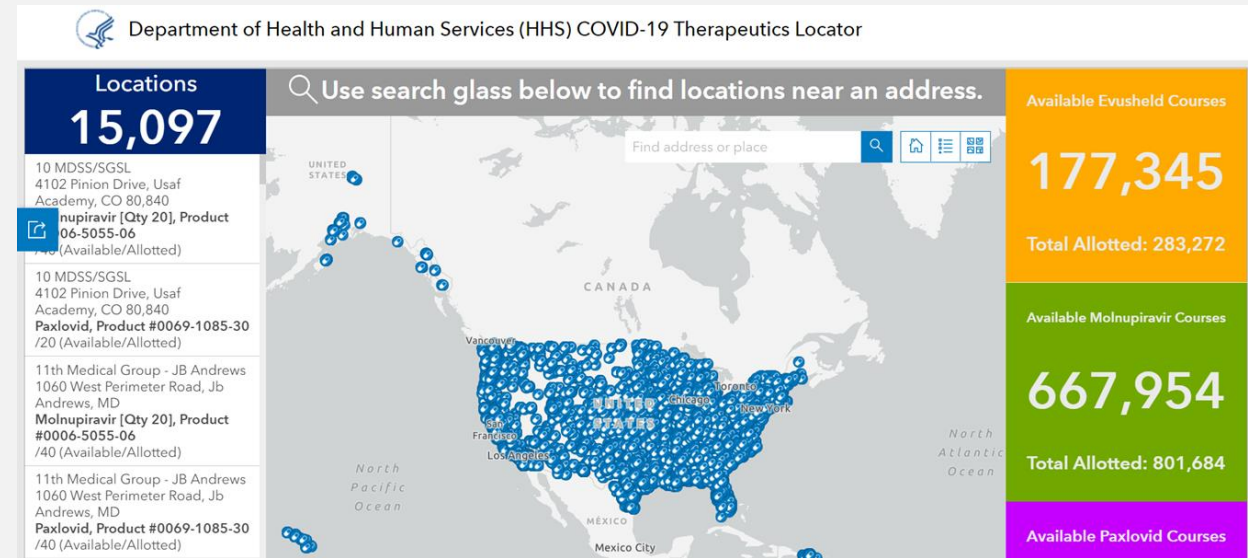
Therapeutics Distributed Statewide

Courses Allocated to Texas: December 2021 - present					
week of	Molnupiravir	Paxlovid	Evusheld	Sotrovimab	Bebtelovimab
12/6/2021			3,912		
12/13/2021				2,694	
12/20/2021					
12/27/2021	19,800	4,240	3,960	2,280	
1/3/2022			3,888	2,406	
1/10/2022	26,360	6,540	5,832	4,014	
1/17/2022			5,832	3,648	
1/24/2022	26,380	6,560	5,880	4,032	
1/31/2022			5,880	4,272	
2/7/2022	26,328	6,540	3,912	4,416	
2/14/2022			4,032	4,776	4,330
2/21/2022	23,088	9,820	4,032	4,254	4,000
Total	121,956	33,700	47,160	36,792	8,330

Demand has decreased for the monoclonal antibody treatments but it still above the allocated amounts

Resources for Therapeutics Providers

- Information for COVID-19 Therapeutics Providers [DSHS Webpage](#)
- therapeutics@dshs.texas.gov
 - DSHS Therapeutics Hotline for Providers
 - Sign up for Weekly eDigest
- [Updated CDC guidance](#)
 - COVID-19 vaccination does not need to be delayed following receipt of monoclonal antibody or convalescent plasma
- [National HHS COVID-19 Therapeutics Locator](#)





DSHS Communications and Data Tools



TEXAS
Health and Human
Services

Texas Department of State
Health Services

Ongoing Public Awareness Campaigns

- DSHS has invested almost \$15 million during the pandemic to provide information on COVID-19 and vaccines across Texas.
- DSHS is currently running advertisements to build vaccine confidence for:
 - Vaccine-hesitant adults
 - Parents of children aged 5-11
 - Pregnant or soon-to-be pregnant people
 - Messages promoting booster shots
- Campaign ads appear on social media, websites, online videos and streaming TV platforms
- DSHS uses research-backed messages and data to reach audiences statewide and in under-vaccinated zip codes and counties.



<https://www.youtube.com/texasdshs>

Texas COVID-19 Data Tools

- **COVID-19 Texas Case Counts**
 - County by county data
 - Filters display probable cases, estimated active, estimated recovered cases, and demographic fatality data
 - [ArcGIS Dashboards](#)
- [Texas Hospital Data Dashboard](#)
- **Texas Data Vaccine Dashboard**
 - Displays vaccine administration throughout the state
 - Tabs display demographic data, vaccines allocated, and sites of vaccinations
 - [Workbook: COVID-19 Vaccine in Texas \(Dashboard\)](#)
- **Information for Hospital and Healthcare Professionals**
 - Various FAQs and resources for providers on topics ranging from COVID-19 vaccines to COVID-19 Therapeutics
 - <https://dshs.texas.gov/coronavirus/healthprof.aspx#thera>
 - <https://dshs.texas.gov/coronavirus/therapeutics-providers.aspx>
- **COVID-19 Variants Tracker**
 - <https://dshs.texas.gov/news/updates.shtm#coronavirus>
- **COVID-19 Cases and Deaths by Vaccination Status Dashboard**
 - <https://www.dshs.texas.gov/immunize/covid19/data/vaccination-status.aspx>



dshs.texas.gov/coronavirus/

Thank you!



dshs.texas.gov/coronavirus

Follow TexasDSHS on [Twitter](#) , [Facebook](#) , [YouTube](#) and [Instagram](#) or visit www.dshs.texas.gov