

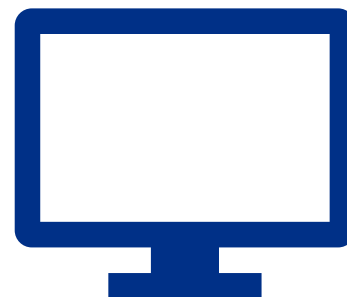
EMS and Trauma Registries

Long-Term Acute Care (LTAC) Resources

Texas long-term acute care (LTAC) or rehabilitation facilities should report all traumatic brain injuries (TBIs) and spinal cord injuries (SCIs) to the Emergency Medical Services and Trauma Registries (EMSTR).

LTACs should send data electronically.

LTACs should create an EMSTR account and use the free online system for submitting data.



Submit data here: Identity and Access Management Online (IAMOnline)
iamonline.hhs.state.tx.us

LTACs and rehab facilities should submit data within 90 days of discharge. EMSTR recommends submitting data every month. During months with no events, facilities must enter a No Reportable Data (NRD) form through the online system.



Please submit questions to injury.web@dshs.texas.gov



TEXAS
Health and Human
Services

Texas Department of State
Health Services

EMSTR Resources and Laws

Under Texas law, Long Term Acute Care facilities must submit all Traumatic Brain Injury and Spinal Cord Injuries to the EMS and Trauma Registries.

.....

RESOURCES

- Traumatic Brain Injury (TBI) / Spinal Cord Injury (SCI) Data Dictionary
dshs.texas.gov/injury-prevention/ems-trauma-registries/long-term-acute-care-ltac-rehab
 - EMSTR New Platform Submissions Reporting System:
iamonline.hhs.state.tx.us/
-

RELEVANT LAWS AND RULES

- Health & Safety Code, Chapter 92.003:
statutes.capitol.texas.gov/Docs/HS/htm/HS.92.htm
- Texas Administrative Code, Chapter 103.4:
[texreg.sos.state.tx.us/public/readtac\\$ext.TacPage?sl=R&app=9&p_dir=&p_rloc=&p_tloc=&p_ploc=&pg=1&p_tac=&ti=25&pt=1&ch=103&rl=4](http://texreg.sos.state.tx.us/public/readtac$ext.TacPage?sl=R&app=9&p_dir=&p_rloc=&p_tloc=&p_ploc=&pg=1&p_tac=&ti=25&pt=1&ch=103&rl=4)
- Texas Administrative Code, Chapter 103.8:
[texreg.sos.state.tx.us/public/readtac\\$ext.TacPage?sl=R&app=9&p_dir=&p_rloc=&p_tloc=&p_ploc=&pg=1&p_tac=&ti=25&pt=1&ch=103&rl=8](http://texreg.sos.state.tx.us/public/readtac$ext.TacPage?sl=R&app=9&p_dir=&p_rloc=&p_tloc=&p_ploc=&pg=1&p_tac=&ti=25&pt=1&ch=103&rl=8)

For more information, visit:

dshs.texas.gov/injury-prevention/ems-trauma-registries/long-term-acute-care-ltac-rehab