

**Snowflake ODBC Driver Installation**  
**for IDDI data mart access with SAS, Excel, and ArcGIS Pro**  
v3 - revised 2022-05-27

IDDI IT PM: Elizabeth Wiewall	<a href="mailto:Elizabeth.Wiewall@hhs.texas.gov">Elizabeth.Wiewall@hhs.texas.gov</a>
HHSC IT Snowflake Admin: Orlando Perez	<a href="mailto:Orlando.Perez@hhs.texas.gov">Orlando.Perez@hhs.texas.gov</a>
HHSC IT SAS Admin: Cyril Darkey	<a href="mailto:Cyril.Darkey@hhs.texas.gov">Cyril.Darkey@hhs.texas.gov</a>
HHSC IT ArcGIS Admin: Chris Pflugfelder	<a href="mailto:Chris.pflugfelder@hhs.texas.gov">Chris.pflugfelder@hhs.texas.gov</a>

*IDDI tech support distro list: [DL\\_DSHS\\_IDDI\\_IT\\_Support@hhsc.state.tx.us](mailto:DL_DSHS_IDDI_IT_Support@hhsc.state.tx.us)*

**To: IT Deskside Support**

**IDDI is a COVID Project** - Thank You for completing this request ASAP.

This document provides installation Information/Documentation and a file download link for an IT Help Desk request to install the current version of the 64-bit Snowflake ODBC driver.

**WARNING:** The instructions below are intended for main office local users and may not work for non-local locations. HHSC uses a directly-trusted certificate file that is unique to DSHS VPN users. If you are a non-local user, skip the prerequisites steps and proceed to Step 1. If an error is revealed, return to the pre-requisite steps below, install the cert file and retest. Should errors continue, please notify the IT Help Desk at 512-438-4720.

[Download the latest 64-bit Snowflake ODBC driver from the Snowflake Site](#)

**Snowflake Documentation from the Snowflake Website**

[Installing & Configuring the ODBC Driver for Windows Documentation](#)

[All Snowflake Connection Documentation](#)

**To connect to Snowflake through Global Protect**

**please follow the steps below:**

# Snowflake ODBC Driver Installation for IDDI data mart access with SAS, Excel, and ArcGIS Pro v3 - revised 2022-05-27

## Prerequisite Instructions for local DSHS users:

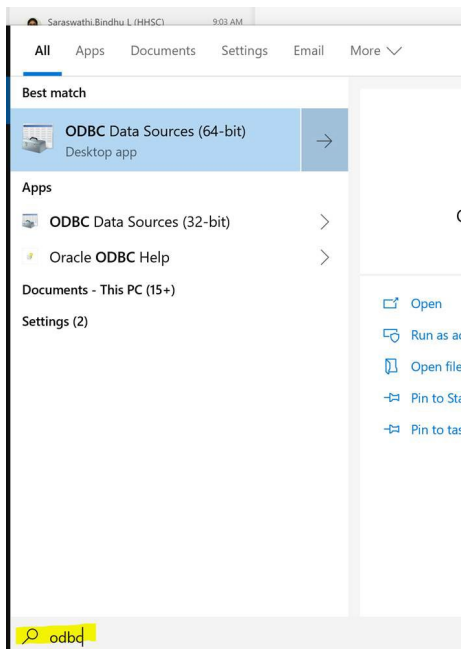
- 1) Copy the attached txt file (cacert.txt) to your computer at location - C:\Program Files\Snowflake ODBC Driver\etc



- 2) Move the existing cacert pem file to another location as backup
- 3) Rename the txt file .pem

**To connect to Snowflake with DSHS- Cisco Anyconnect VPN no additional prerequisites are needed.  
You can move to Step 1 below:**

Step 1: Search for ODBC and open the ODBC Data Source (64-bit) app

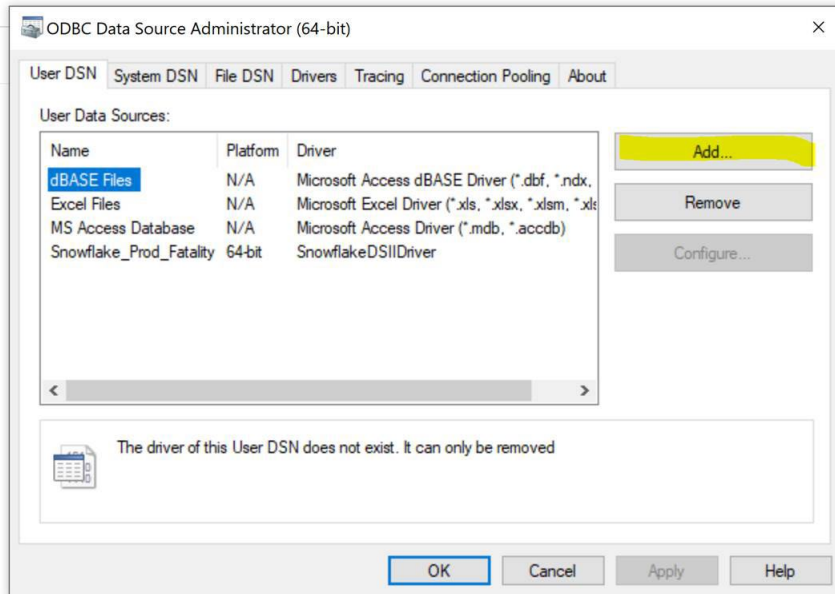


Step 2: On the user DNS tab click on the Add Button

# Snowflake ODBC Driver Installation

## for IDDI data mart access with SAS, Excel, and ArcGIS Pro

v3 - revised 2022-05-27



Step 3: Scroll down the driver list and identify the SnowflakeDSIIDriver.

If this driver is not in the list then please call the IT Help Desk and let them know to re-do the installation.

