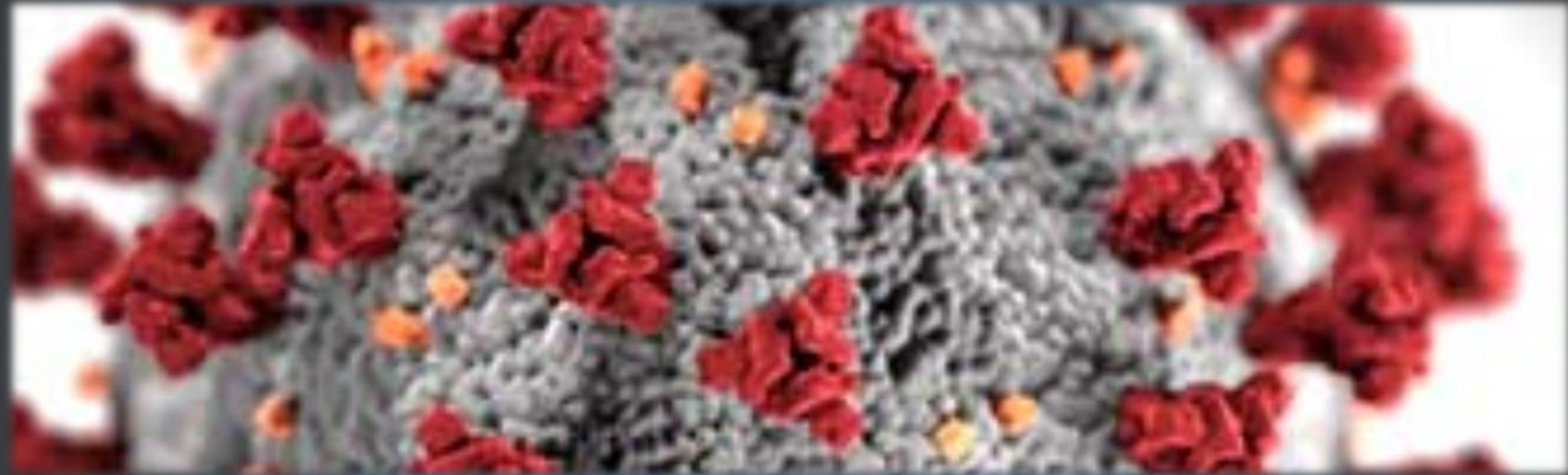




**TEXAS**  
Health and Human  
Services

**Texas Department of State  
Health Services**

# COVID-19 Update



June 29, 2021

John W. Hellerstedt, MD, Commissioner

Texas Department of State Health Services



# COVID-19 Epidemiological Trends

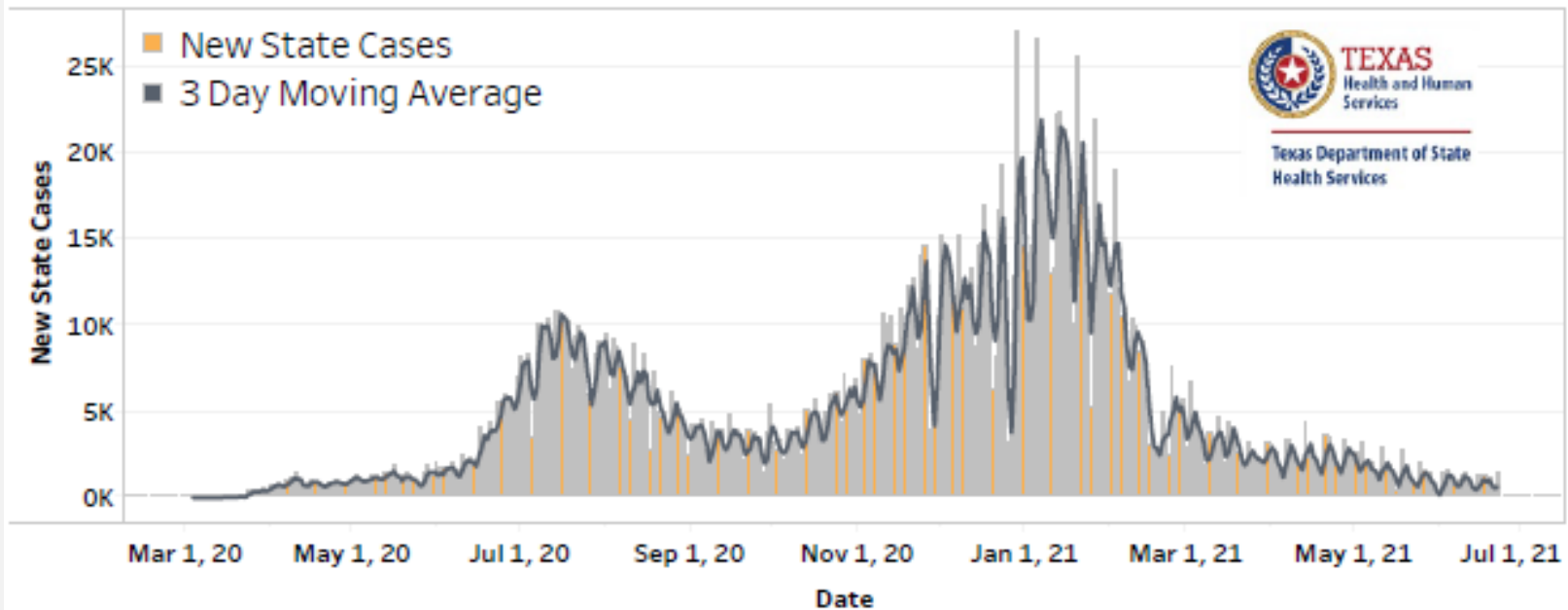


# Texas COVID-19 Data Tools

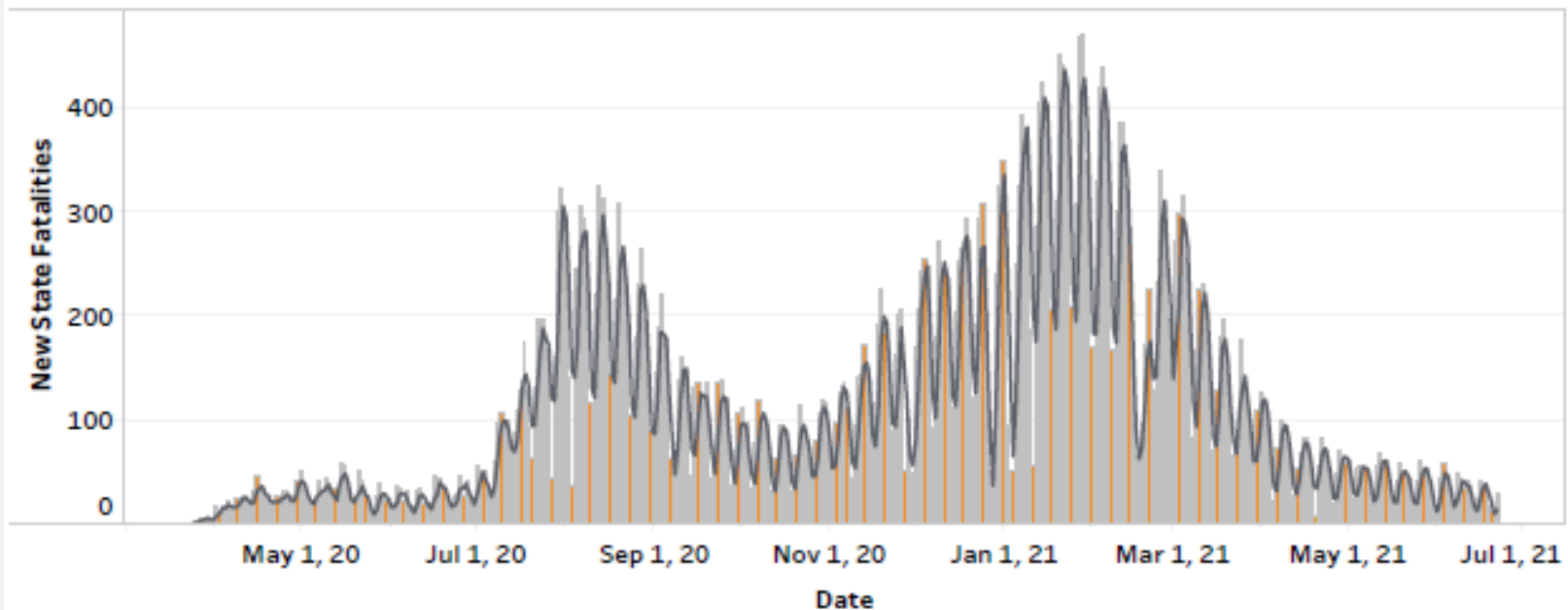
- COVID-19 Texas Case Counts
  - County level data
  - Filters for probable cases, estimated active, and estimated recovered cases
  - [ArcGIS Dashboards](#)
- Texas Vaccine Data Dashboard
  - Displays vaccine administered, people vaccinated and doses shipped
  - [Workbook: COVID-19 Vaccine in Texas \(Dashboard\)](#)
- COVID-19 Variants Tracker
  - <https://dshs.texas.gov/news/updates.shtm#coronavirus>



## New Texas Cases by Day



## New Texas Fatalities by Day



Texas Department of State Health Services

## Hospitalizations Over Time

Total Texas Proportion of Lab-Confirmed COVID-19 Occupancy of General and ICU Beds out of Total Hospital Beds as of:

Monday, June 21, 2021 Totals

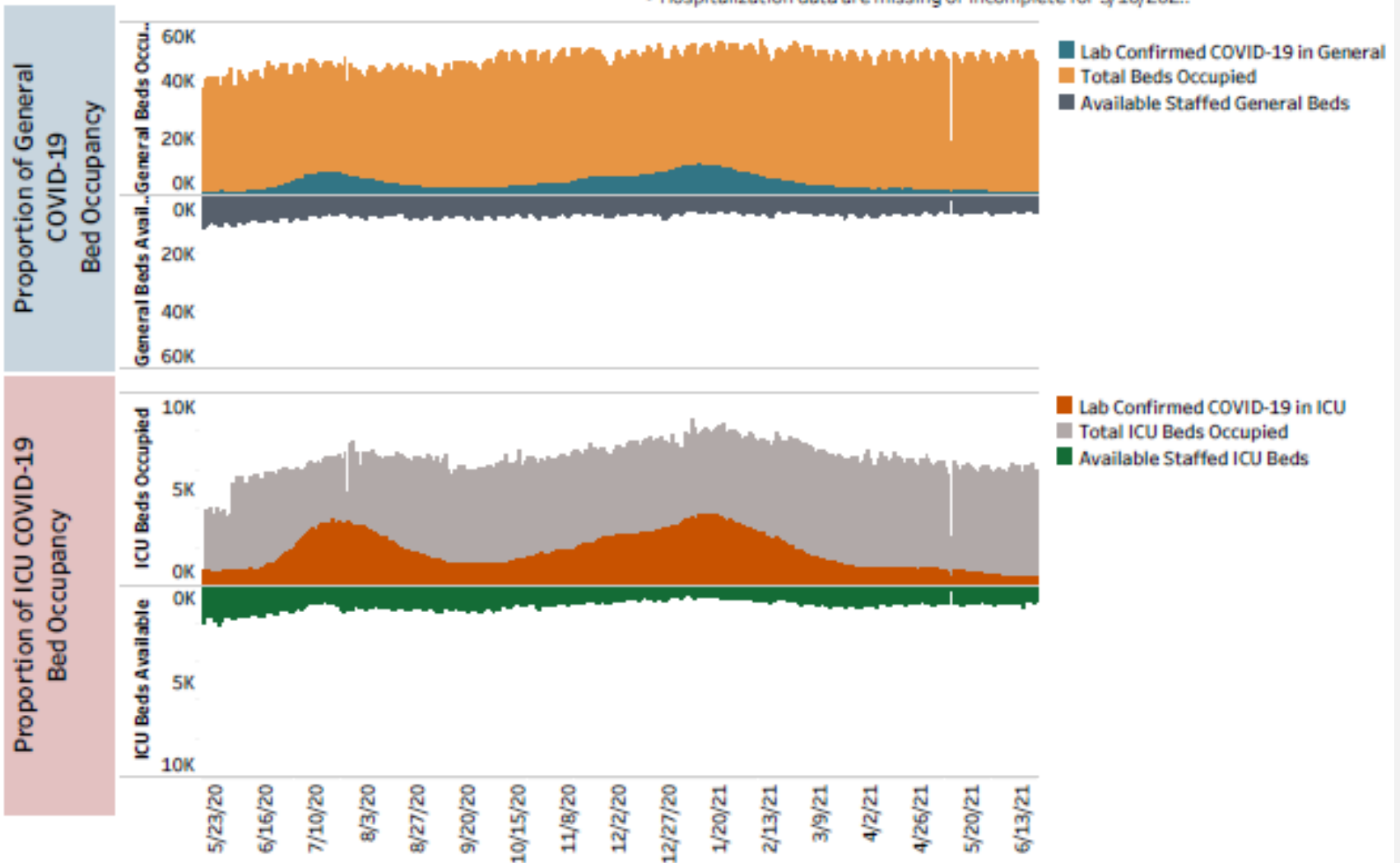
Lab Confirmed COVID-19 in General	999.0
Lab Confirmed COVID-19 in ICU	483.0
Total Lab Confirmed COVID-19 Gen + ICU	1,482.0

### Notes:

- The most recent hospital data is reported for the day prior.
- After 7/23/2020, DSHS reported incomplete hospitalization numbers due to a transition in reporting to comply with new federal requirements.
- Hospitalization data are missing or incomplete for 5/10/2021.



Texas Department of State Health Services



These preliminary data are current as of 1:00pm on 6/22/2021.



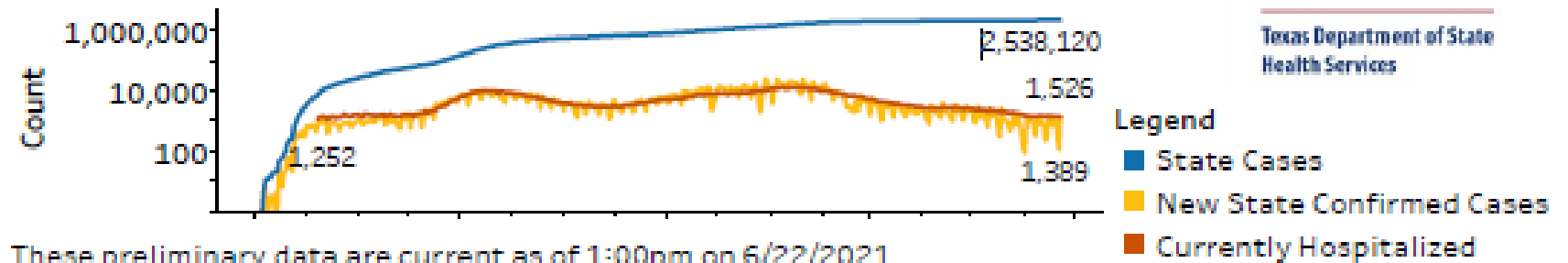
Texas Department of State Health Services

# Texas COVID-19 Trends: A Full Picture

Total Texas Covid-19 Confirmed Cases, Confirmed New Cases, and Current Confirmed Hospitalizations



Texas Department of State Health Services

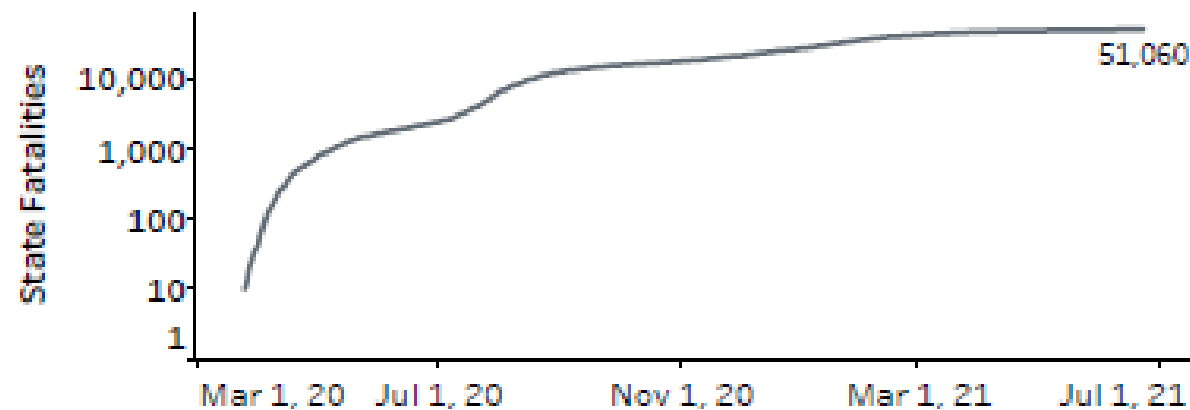


These preliminary data are current as of 1:00pm on 6/22/2021.

Notes:

- After 7/23/2020, DSHS reported incomplete hospitalization numbers due to a transition in reporting to comply with new federal requirements. As of 8/19/2020, 91% of hospitals were reporting.
- During the week of Feb. 14-Feb. 21, 2021, case and fatality reporting was significantly impacted across the majority of Texas counties due to weather-related issues.
- Hospitalization data are missing or incomplete for 5/10/2021 and 5/11/2021

Total Texas Covid-19 Fatalities



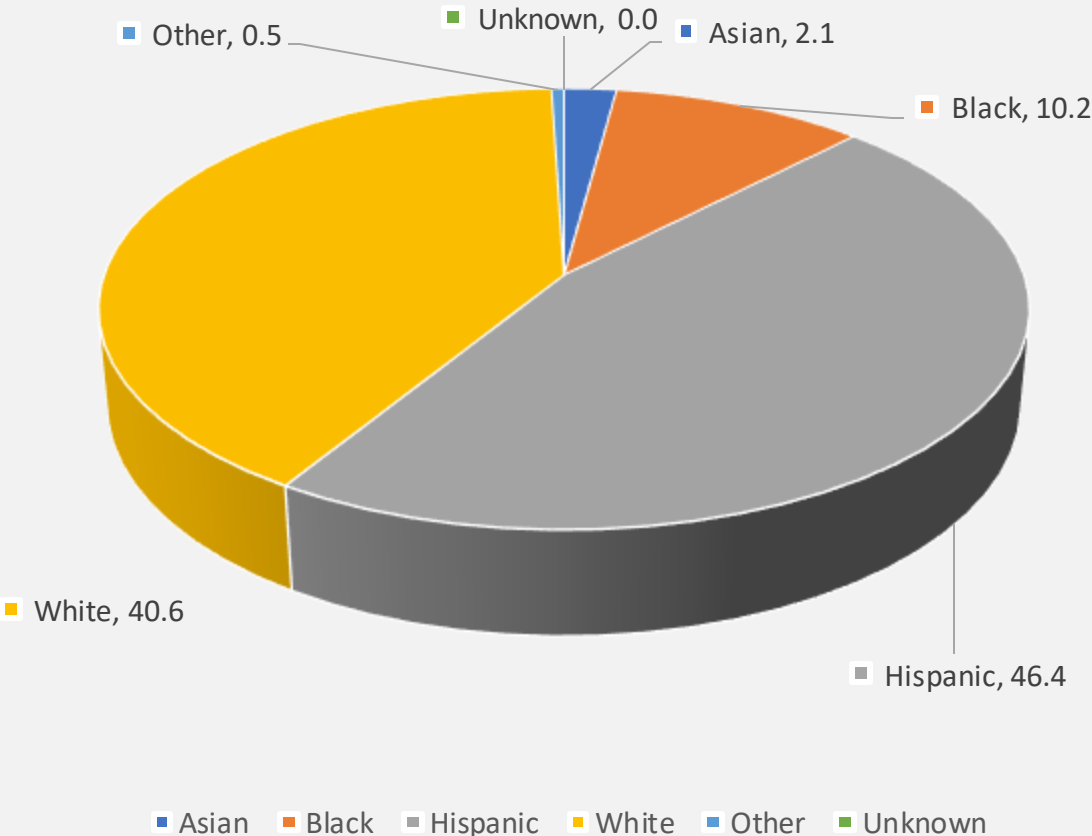
Note: As of July 27, 2020, DSHS is reporting COVID-19 fatality data based on death certificates. The metric used in these charts reports total newly reported fatalities (as opposed to the date of death).



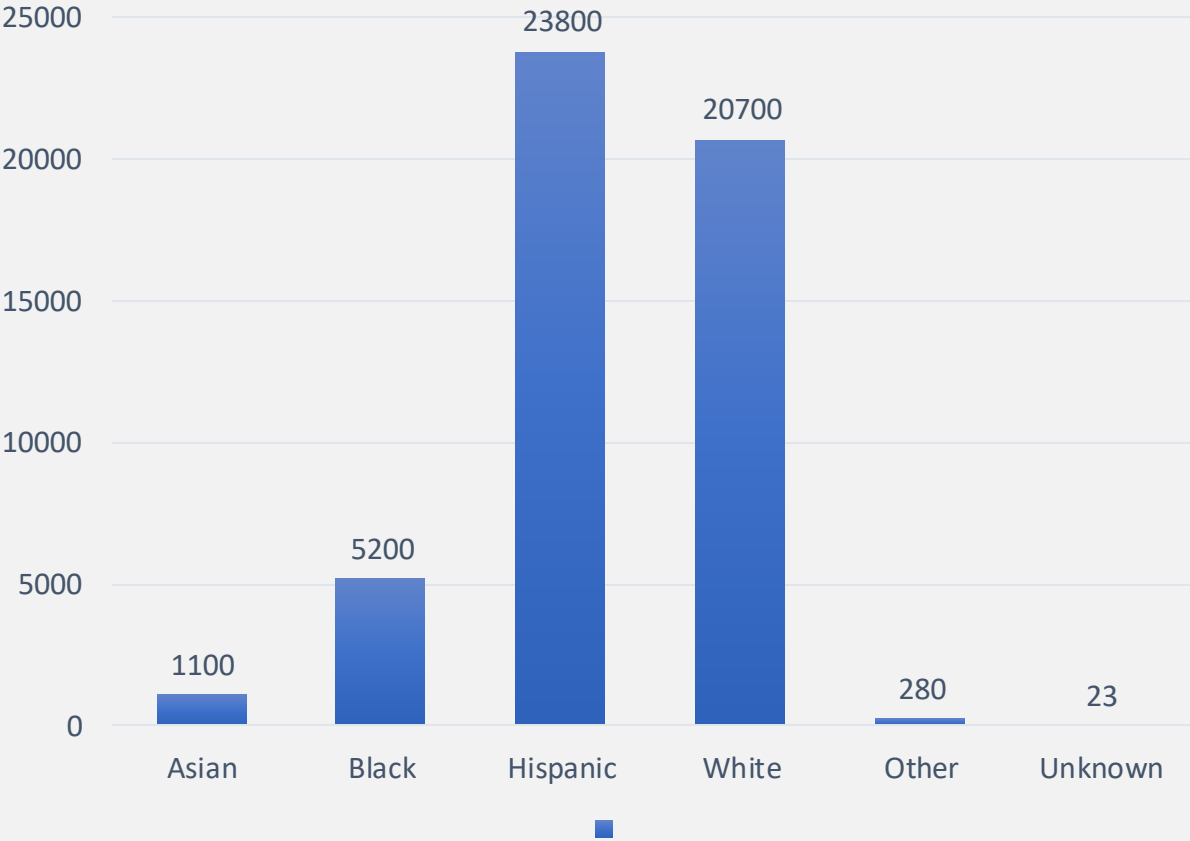
Texas Department of State Health Services

# COVID-19 Fatalities by Race/Ethnicity

Fatalities by Race/Ethnicity as Percentage



Fatalities by Race/Ethnicity (N=51,163)

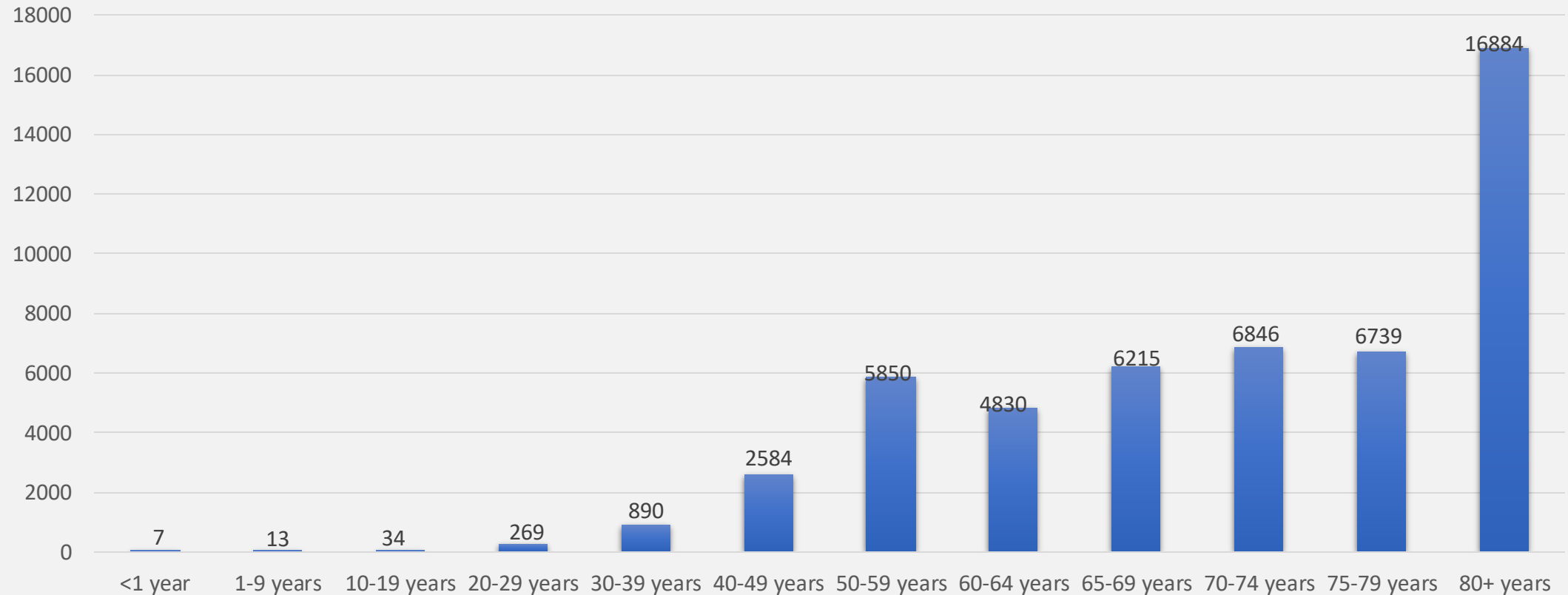


\*as of June 28, 2021



# COVID-19 Fatalities by Age

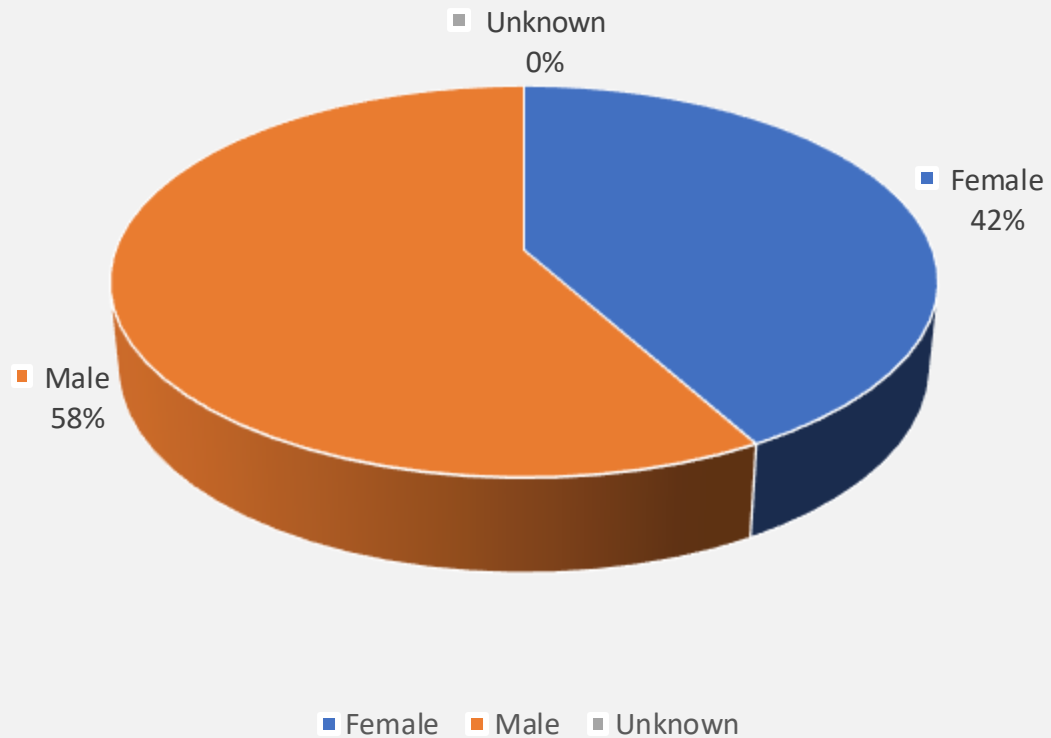
Fatalities by Age (N=51,163)



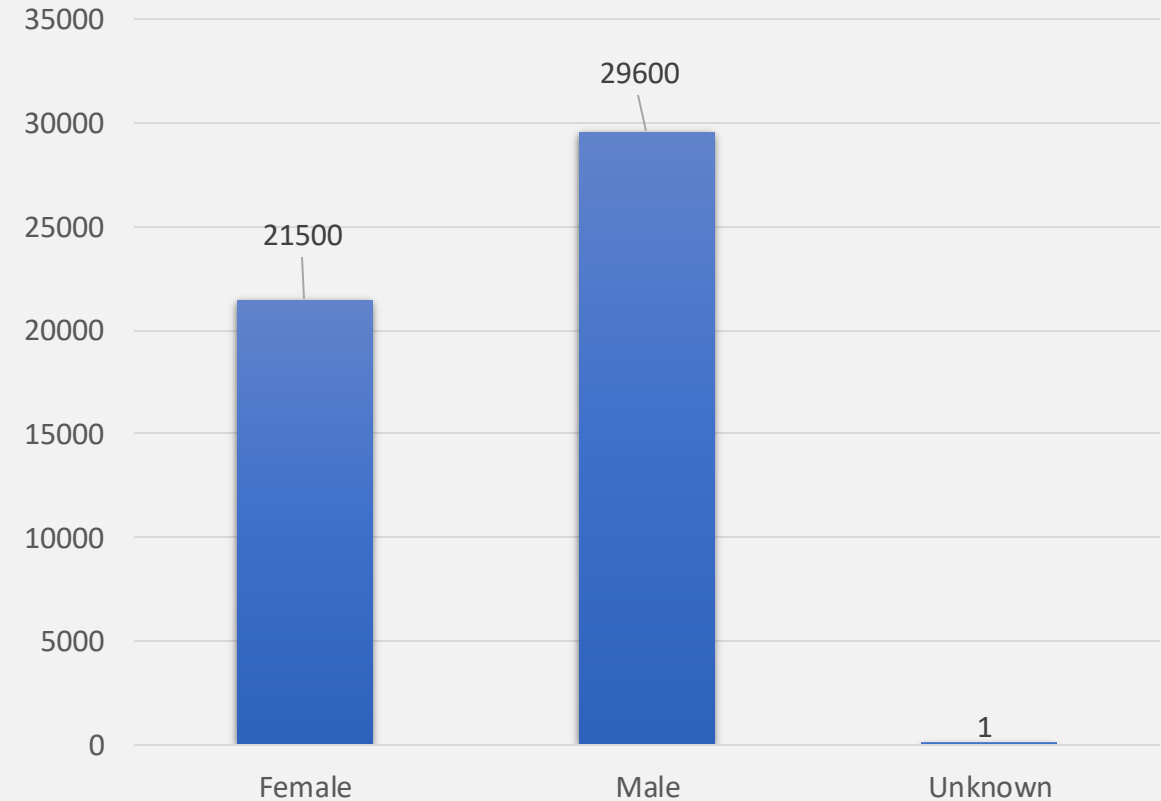
*\*as of June 28 2021*

# COVID-19 Fatalities by Gender

## Fatalities by Gender as a Percentage



## Fatalities by Gender (N=51,163)



*\*as of June 28, 2021*



# Variants



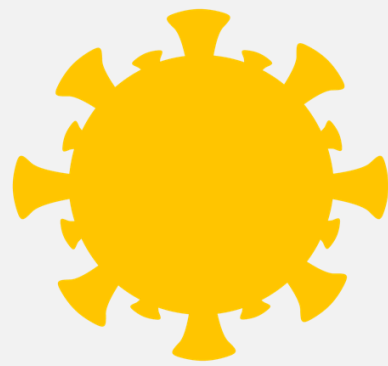
# Emerging and Acute Infectious Disease Unit (EAIDU)



- The EAIDU:
  - Investigates sequencing data and builds COVID-19 sequencing surge capacity
  - Establishes reporting procedures for collecting breakthrough and reinfection cases, cases with severe outcomes, and molecular test target failures
  - Performs broader genomic variant surveillance and ensuring representation through actively recruiting samples from underrepresented counties in Texas
- Coronavirus Team runs 12 daily and weekly reports to support DSHS decision making and resource allocation, and that feed public-facing dashboards
- Has identified:
  - 755 reinfection cases (as of 6/14/21)
  - 1,306 vaccine breakthrough cases (as of 6/23/21)
  - 97 MIS-C cases in Texas (from 4/20 – 12/20)



# Variants



- DSHS and partners investigate more than 4,003 genetic variants of concern
  - Alpha variant predominate in Texas and U.S.
  - 25 cases of Delta variant in Texas
- COVID-19 Variants Tracker
  - <https://dshs.texas.gov/news/updates.shtm#coronavirus>

Summary Table: COVID-19 Variant of Concern Cases Reported to Texas DSHS, by TSA and variant.

<a href="#">TSA</a>	B.1.1.7 ALPHA (UK)	B.1.351 BETA (South Africa)	B.1.617.2 DELTA (India)	B.1.427 EPSILON (California)	B.1.429 EPSILON (California)	P.1 GAMMA (Brazil)	Total
A	2	0	0	0	1	0	3
B	7	1	2	0	2	0	12
D	4	0	0	0	0	0	4
E	419	10	6	5	16	14	470
F	2	0	0	0	0	0	2
G	10	0	0	0	1	0	11
H	11	0	0	0	0	0	11
I	53	0	0	8	10	1	72
J	15	0	0	0	2	0	17
K	1	0	0	0	0	0	1
L	95	0	0	2	0	0	97
M	33	0	0	0	4	0	37
N	56	0	0	1	1	1	59
O	209	1	0	2	7	3	222
P	158	1	1	0	3	6	169
Q	936	3	7	7	9	29	991
R	378	1	7	0	4	14	404
S	4	0	0	0	0	0	4
T	2	0	0	0	0	0	2
U	47	0	0	0	1	0	48
V	43	0	0	0	2	10	55
Pending patient info from lab	1,120	3	2	15	122	50	1,312
<b>Grand Total</b>	<b>3,605</b>	<b>20</b>	<b>25</b>	<b>40</b>	<b>185</b>	<b>128</b>	<b>4,003</b>



# DSHS Response Activities

# DSHS Roles during the Pandemic

- Coordinate state and local public health efforts.
- Deploy medical staffing to hospitals, nursing facilities, and other healthcare entities.
- Source and allocate therapeutics, medical supplies, and personal protective equipment.
- Maintain public awareness and knowledge through multi-media platforms.
- Provide guidance for individuals, businesses, and elected leaders.
- Manage lab testing and capacity.
- Collect, analyze, and report data.
- Develop the infrastructure for equitable COVID-19 vaccine distribution.



# DSHS Activities Update

- Health System Support:

- DSHS demobilized 13,737 medical surge staff due to lower COVID-19 hospitalizations
- SMOC is currently demobilizing durable medical equipment (DME)
  - Ventilators, Bi-PAPs, oxygen concentrators, etc.
  - 63% of state DME is still deployed



- Getting vaccines to vulnerable Texans:

- DSHS is providing 25 nursing homes and 205 assisted living facilities with vaccines
- 539 homebound Texans and their families have been vaccinated

- 655 courses of therapeutics have been delivered statewide

- DSHS COVID-19 Hotline:

- 49,841 Calls received
- 44,145 Emails received





# Texas Health Trace

- 1,334 State and local contact tracers
- 60 Local and 8 regional health entities voluntarily participating in Texas Health Trace
- 65 Local Health Authorities have expressed interest in access to Texas Health Trace
  - 24 performing Case Investigation/Contact Tracing
  - 33 access for local level reports only
  - 8 in communication to determine access needs

Over 818,000 Texans contacted for case investigation and contact tracing



~470,000 exposed contacts notified

Over 30,000 notified exposed contacts converted to cases

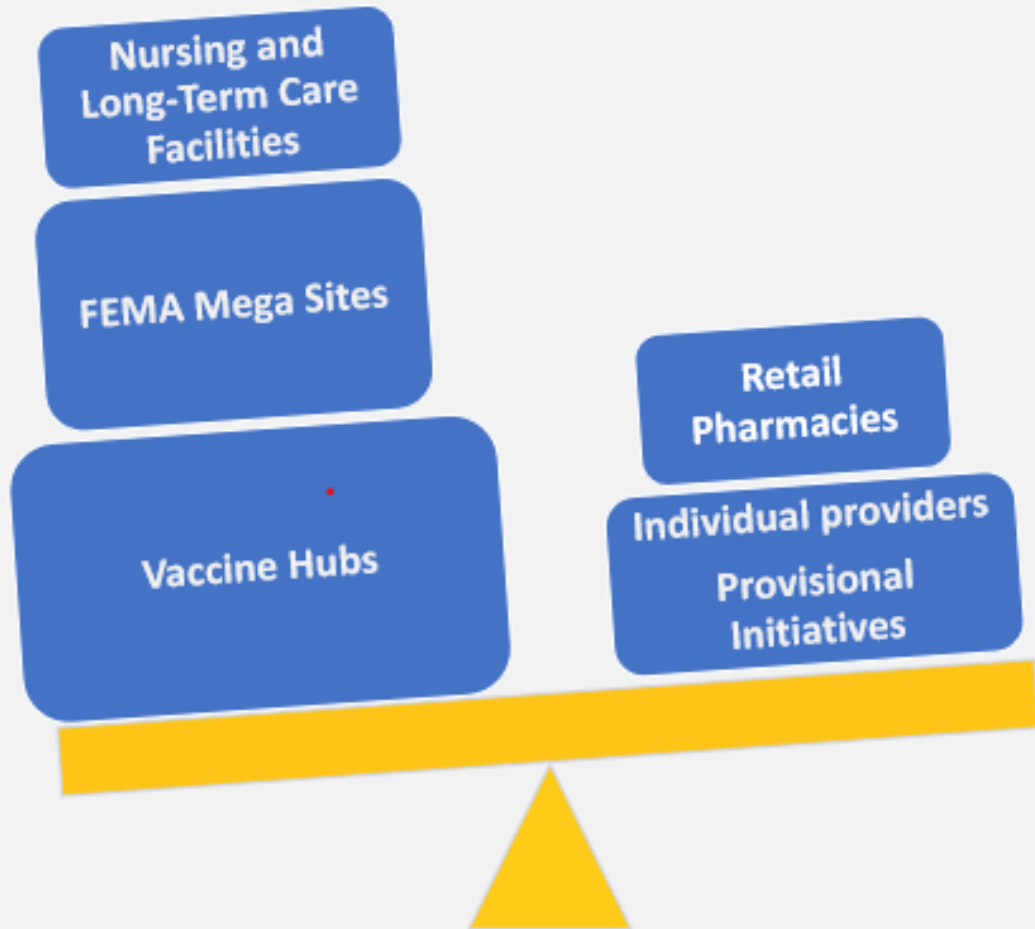


# COVID-19 Vaccines: Distribution Strategies

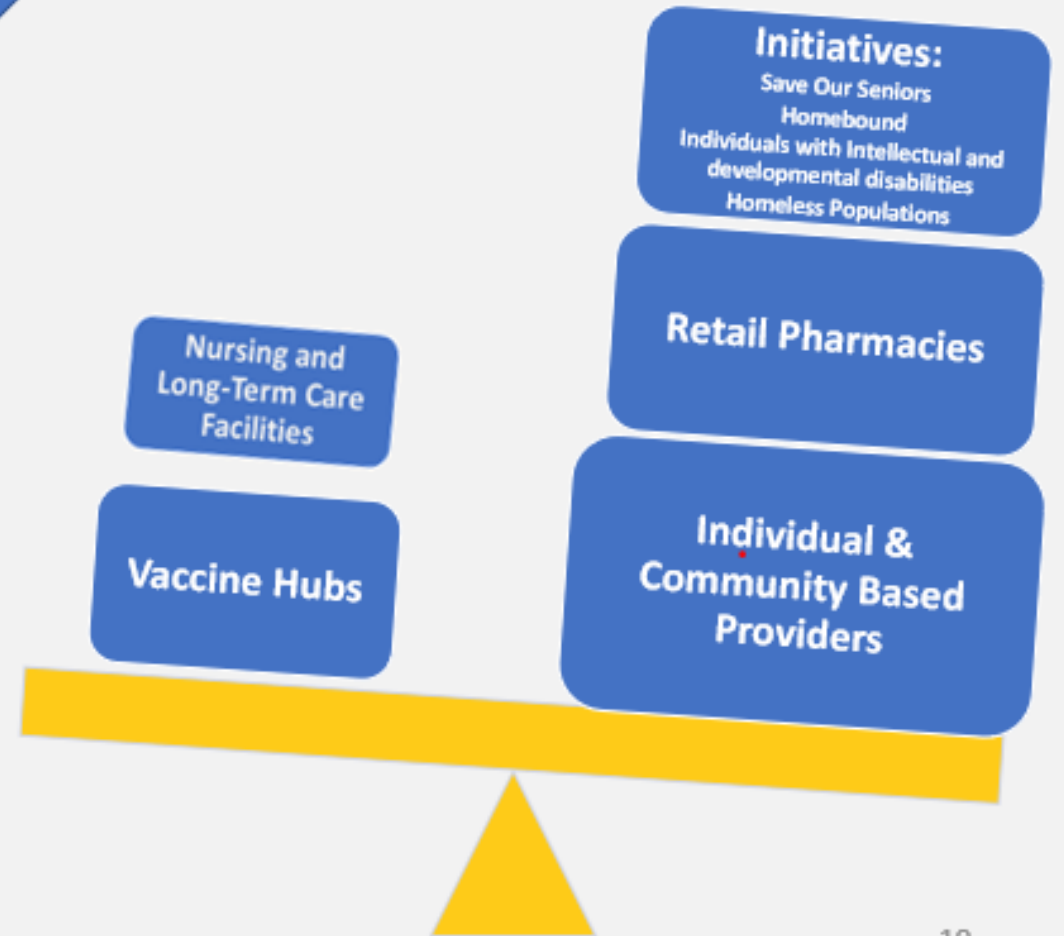


# Vaccine Allocation and Distribution Strategies

## Initial Vaccine Strategy



## Current Vaccine Strategy



# Phased Approach to Vaccine Eligibility



Total Texas Population 12 +  
= 24,068,626

**Phase 1A**

- Paid and unpaid health professionals
- EMS providers, staff and residents at long-term care facilities

~13.5 million Texans

**Phase 1B**

- Adults 65+
- Adults 16+ with certain comorbidities

**Phase 1C**

- Adults 50 - 64

~5 million Texans

**Education and Child Care Workers**

- Pre-primary, primary, and secondary school staff
- Workers for licensed child care providers

~ 1.26 million Texans

**Adults 16+**

- All adults 16+

~22.4 million Texans

**Youth 12 -15**

- Adolescents 12-17 can receive the Pfizer vaccine

~1.6 million Texans



# DSHS COVID-19 Messaging

Follow TexasDSHS on:

[Twitter](#) , [Facebook](#) , [YouTube](#) and [Instagram](#) or visit [www.dshs.texas.gov](http://www.dshs.texas.gov)

[dshs.texas.gov/covidvaccine](http://dshs.texas.gov/covidvaccine)



**TEXAS**  
Health and Human  
Services

Texas Department of State  
Health Services

# Texans' Reasons to Get Vaccinated Differs

Differences in #1 reasons among sub-segments

## SAFETY

Gender: Men #1 is *if my doctor says so.*

Race/Ethnicity: Non-Hispanics #1 is *if my doctor says so*

Age: Age 65+ #1 is *if my doctor says so*

Geography: Rural #1 is *if my doctor says so and you can never know if a vaccine is safe*

Suburban #1 is *seeing scientific data that says so*

Very vaccine hesitant: #1 is *if my doctor says so, also you can never know if vaccine is safe*

NOT planning to get COVID-19 vaccine: Over half said *you can never know if vaccine is safe*

## EFFICACY

Gender: Men #1 is *if other people got the vaccine and didn't get COVID-19*

Race/Ethnicity: Hispanic #1 is *if other people got the vaccine and didn't get COVID-19*

Black #1 is *if CDC says so*

Age: Age 18-34 *if other people got the vaccine and didn't get COVID-19*

Age 35-64 #1 is *if CDC says so*

Age 65+ #1 is *if my doctor says so*

Geography: Rural #1 is *if my doctor says so and you can never know if a vaccine is safe*

Suburban #1 is *seeing scientific data that says so*

Very vaccine hesitant: #1 is *if I see healthcare professionals getting vaccine and you can never know if a vaccine works*

NOT planning to get COVID-19 vaccine: #1 is *if other people got the vaccine and didn't get COVID-19 and you can never know if a vaccine works*

# Research-Based Vaccine Messages

- The vaccine is key to helping our lives get back to normal.
- The vaccine protects you and those around you.
- The vaccines were tested in clinical trials with diverse races and ethnicities.
- The vaccines do not contain the COVID-19 virus. You can't get COVID-19 from the vaccine.
- The vaccine is working and helping to keep people out of the hospital or getting seriously ill.
- Clinical trials indicate that the Pfizer, Moderna, and the Johnson & Johnson vaccines are extremely effective at preventing serious disease, hospitalization and death due to COVID-19.
- CDC and DSHS are encouraging all eligible adults and youth to get the vaccine.



# Communications Efforts



TV, Radio, Social Media

1 Billion Views



Rural LED Trucks



Pop-Up Large Video Wall



# Getting the Vaccine



**Get back together.  
Get vaccinated.**

**COVID-19 vaccines**

-   
are tested in clinical trials with diverse races and ethnicities.
-   
don't contain the live virus and can't give you COVID-19.
-   
protect you from hospitalization and death.
-   
are endorsed by doctors, the CDC and the Texas Department of State Health Services.

 Continue to wear a mask, social distance, wash hands and avoid large gatherings.

 Visit [covidvaccine.texas.gov](https://covidvaccine.texas.gov) or call 1-833-832-7067 to find a vaccine. Point your phone camera here to learn more.

**Every Dose Matters.**  
#HealthyTexas

 **TEXAS**  
Health and Human Services | Texas Department of State Health Services

# Public Health in Action: Getting Vaccines to all Communities in Texas

- 92 vaccination teams statewide that are available to vaccinate 1-10,000 Texans per event
- 2,147 DSHS-sponsored vaccination events
- DSHS has been agile in providing vaccinations in non-traditional settings, where Texans are.
- DSHS focused on making vaccines accessible to special populations:
  - Individuals with Intellectual or Developmental Disabilities (IDD), Individuals with Behavioral/Mental Health challenges, Individuals with Physical Disabilities
  - Homebound and/or disabled populations

The second Pfizer dose for those who attended the clinic will be scheduled for three weeks after the date of their first shot. The Texas Department of State Health Services will be hosting another vaccine clinic at Tennison Methodist Church for anyone 12 years and older on May 27th and 28th. It'll run from 2-7pm and walk-ins are welcome.



Onelia Orellana talks to Texas Department of State Health Services specialist and translator Maria Palacio before she receives her first COVID-19 vaccine dose at Tennison Memorial United Methodist Church in Mount Pleasant on May 7, 2021. A more personalized push to promote vaccinations is proving effective in northeast Texas. Shelby Tauber for The Texas Tribune

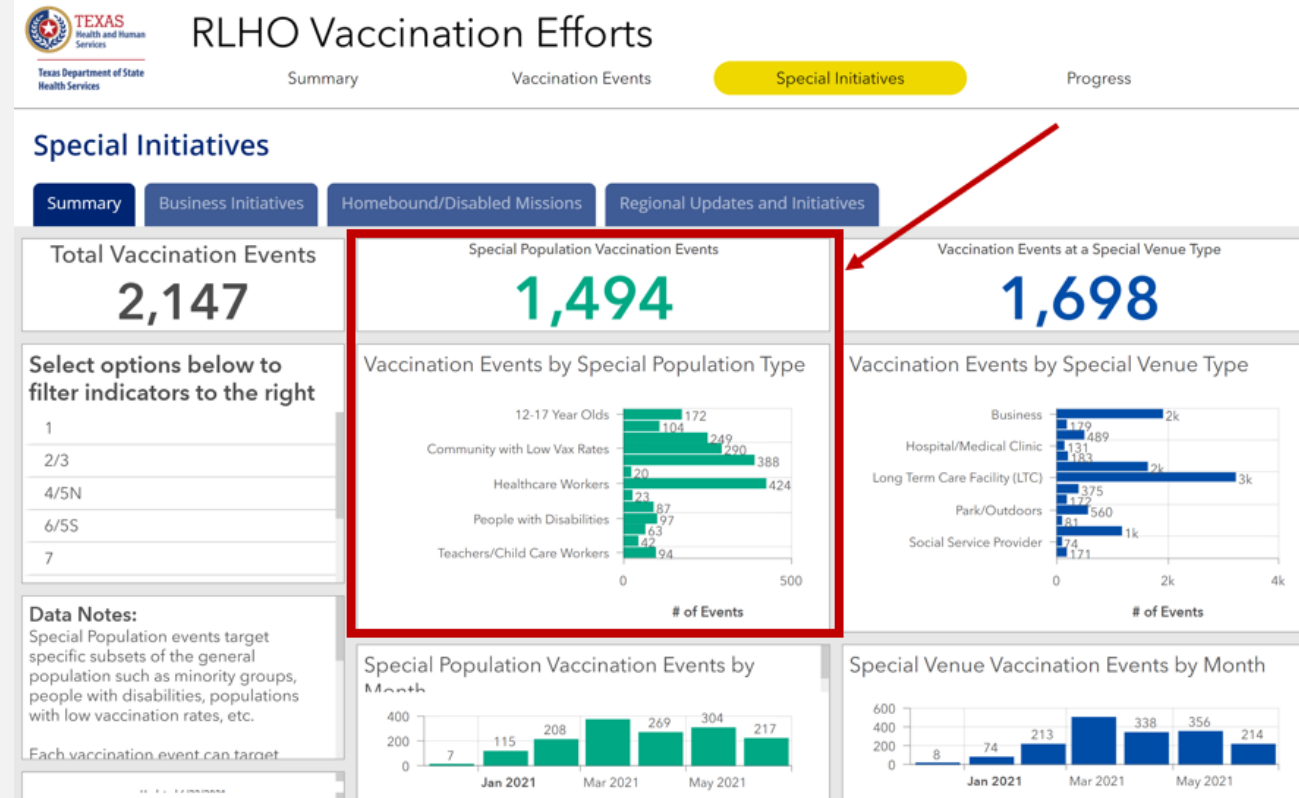
# Vaccines in Community Settings

- 5 county jails and 1 private detention center
- 6 ISDs across the state partnered with DSHS to host district wide vaccine clinics for students and parents, and more are scheduled for the coming weeks.
- DSHS has focused on getting vaccines in rural communities:
  - 3 Love's Truck Stops - 328 vaccine doses administered
  - RV Parks
  - Liberty County flea market – 278 vaccines doses administered



# Vaccines for Special Populations

- ~12,000 vaccine doses administered to special populations statewide
- 58 vaccination events for homes serving IDD patients
- Vaccination events for Special Olympics Texas
- Vaccination events for Texas School for the Blind and Texas School for the Deaf
- 442 completed “missions” to vaccinate homebound Texans and their households



# Accessing Vaccines by Phone



- State Mobile Vaccination Teams
  - Call 844-90-TEXAS (844-908-3927)
    - Option #3: Organizations and businesses that want to vaccinate at least 5 or more individuals
    - Option #1: Homebound Texans
- To schedule an appointment
  - 2-1-1 Option #6
  - 833-832-7067
- To find an address of a nearby vaccination center, text:
  - “GETVAX” to 438829
  - “VACUNA” to 822862

# Accessing Vaccines Online



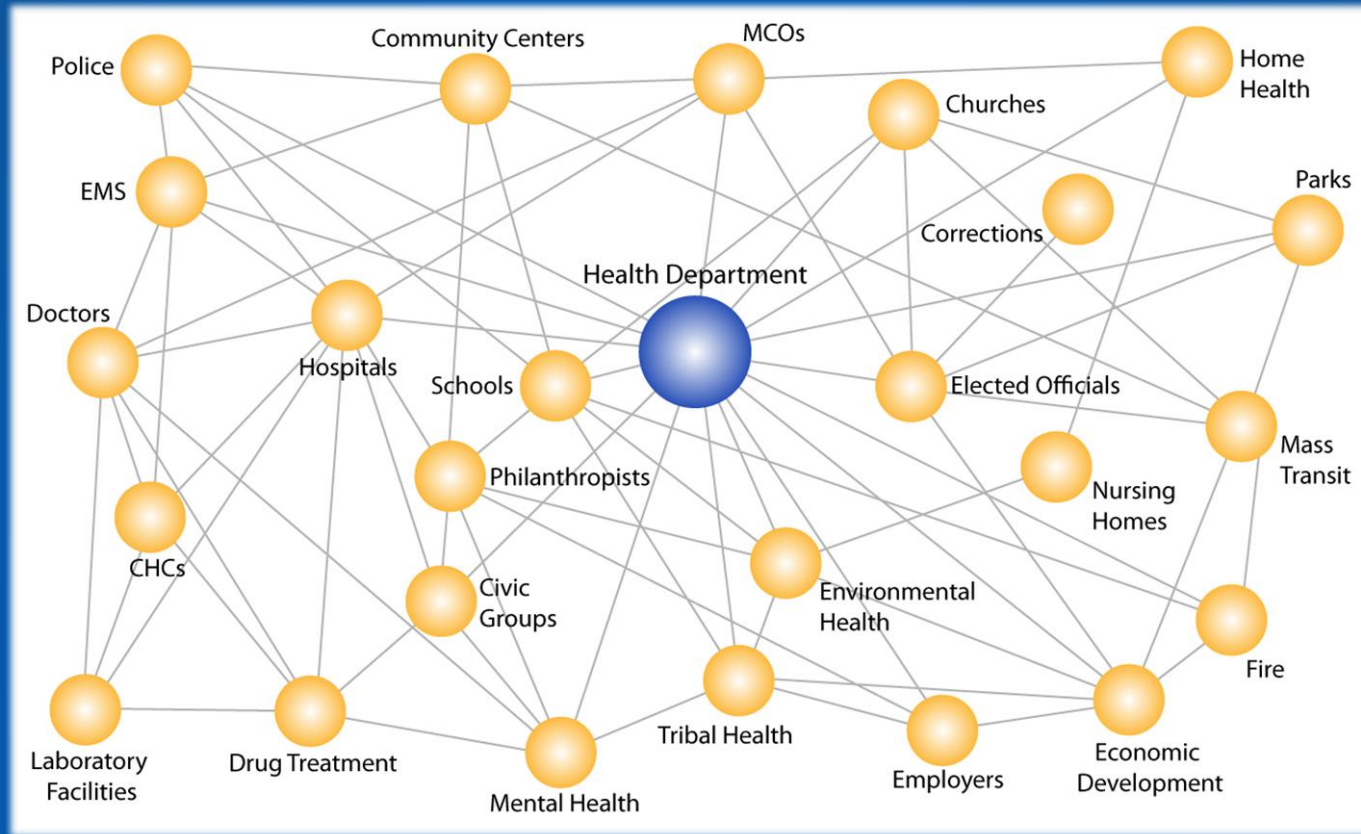
[GetTheVaccine.dshs.Texas.gov](https://www.getthevaccine.dshs.texas.gov)

[Texas COVID-19 Vaccine Availability Map](#)

[VaccineFinder - Find COVID-19 vaccine locations near you](#)



Texas Department of State  
Health Services



# Collaboration and Partnerships



TEXAS  
Health and Human  
Services

Texas Department of State  
Health Services

# DSHS Engaging Partners

- Weekly Legislative Calls
  - Audience: State and Federal Elected Officials
- Bi-weekly Statewide Calls
  - Local and regional health professionals
  - Local elected leaders
- Weekly Vaccine Provider Webinars
  - Provide technical support to registered vaccine providers statewide
- State Agencies
- Texas Medical Association
- Texas Hospital Association





# DSHS Engaging Cross Functional Partnerships: What Businesses Can Do

- DSHS partnered with the Texas Association of Businesses to reach out to Chambers of Commerce to sponsor vaccine clinics
- 193 businesses have requested vaccine clinic support
  - 178 business vaccination clinics completed
  - 15,913 vaccine doses administered

## Resources for Businesses:

Opening Texas Resources:

<https://dshs.texas.gov/coronavirus/opentexas.aspx#protocols>

Communications Tools for Businesses to print or share online

<https://dshs.texas.gov/coronavirus/business.aspx>

## Help Texans Get Their COVID-19 Vaccine

### Host a Vaccine Clinic

The Texas Department of State Health Services is asking Texas Chambers of Commerce to host vaccination clinics for your members and employees.

DSHS is providing at no cost to Chambers and your members:

- two-dose vaccines, either Pfizer or Moderna
- an easy way for employees to sign up
- staffing for your clinic, if needed



### Getting Started



#### Step 1

Email Ricky Garcia ([ricky.garcia@dshs.texas.gov](mailto:ricky.garcia@dshs.texas.gov)) to let DSHS know you would like to host a vaccine clinic. Please include the following information:

1. The name and address of the Chamber of Commerce hosting the clinic
2. The approximate number of people you'll invite to your vaccine clinic (at least 35)
3. Whether you want DSHS to provide staff for your clinic, or whether you have an established relationship with a vaccine provider
4. Contact information for the person who will help coordinate your event with DSHS



#### Step 2

DSHS will contact you on next steps to schedule your vaccine clinic.



#### Step 3

You invite Chamber members and their employees to attend your clinic.

Thank you for helping us protect Texans from COVID-19.

Follow us @TexasDSHS:



TEXAS  
Health and Human  
Services | Texas Department of State  
Health Services

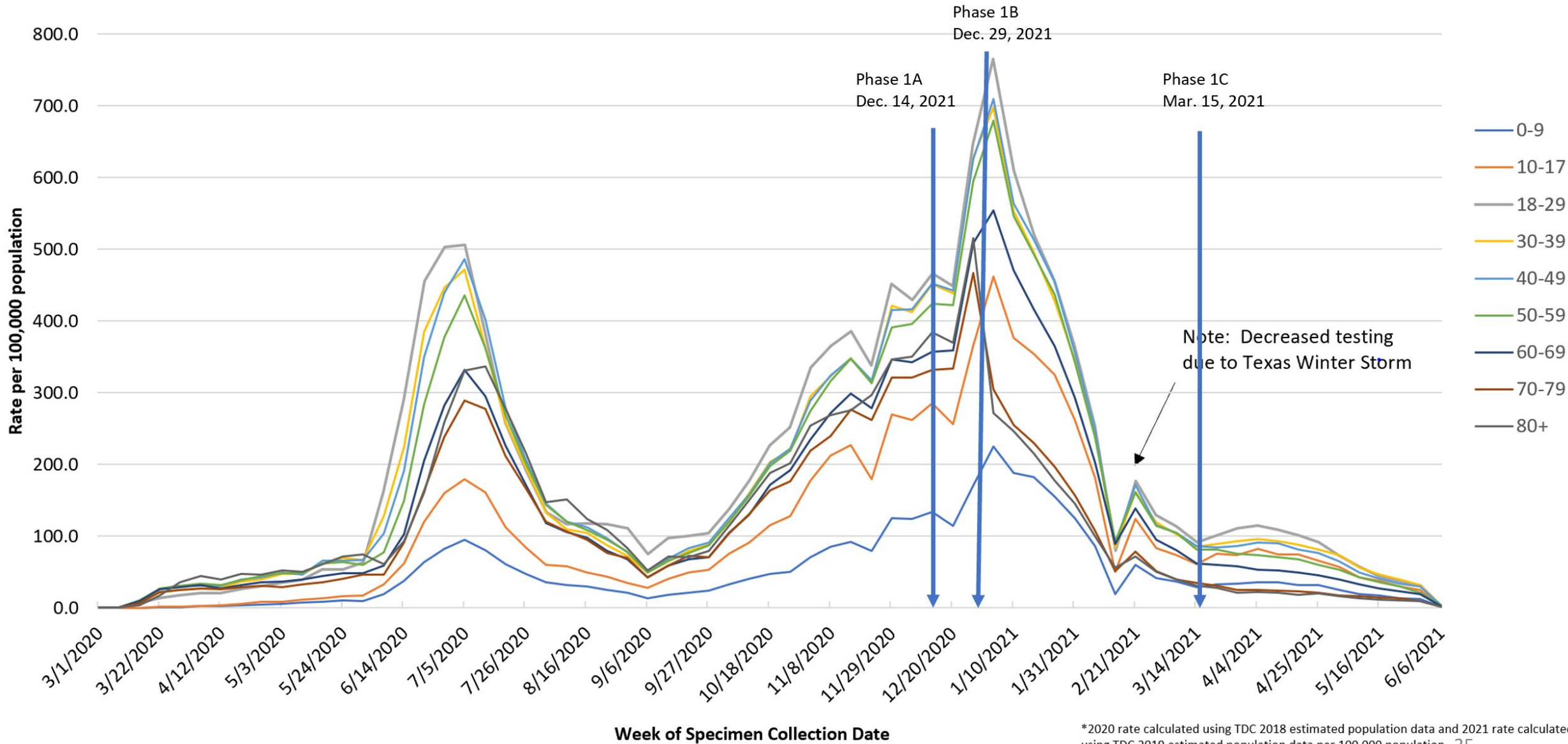
[covidvaccine.texas.gov](https://covidvaccine.texas.gov)



# The impact of COVID-19 vaccinations on hospitalizations and fatalities in Texans



# PCR-positive SARS-CoV-2 Rates\* by Week of Specimen Collection Date and Age Group in Texas (3/1/20-6/10/21, n=2,874,082)

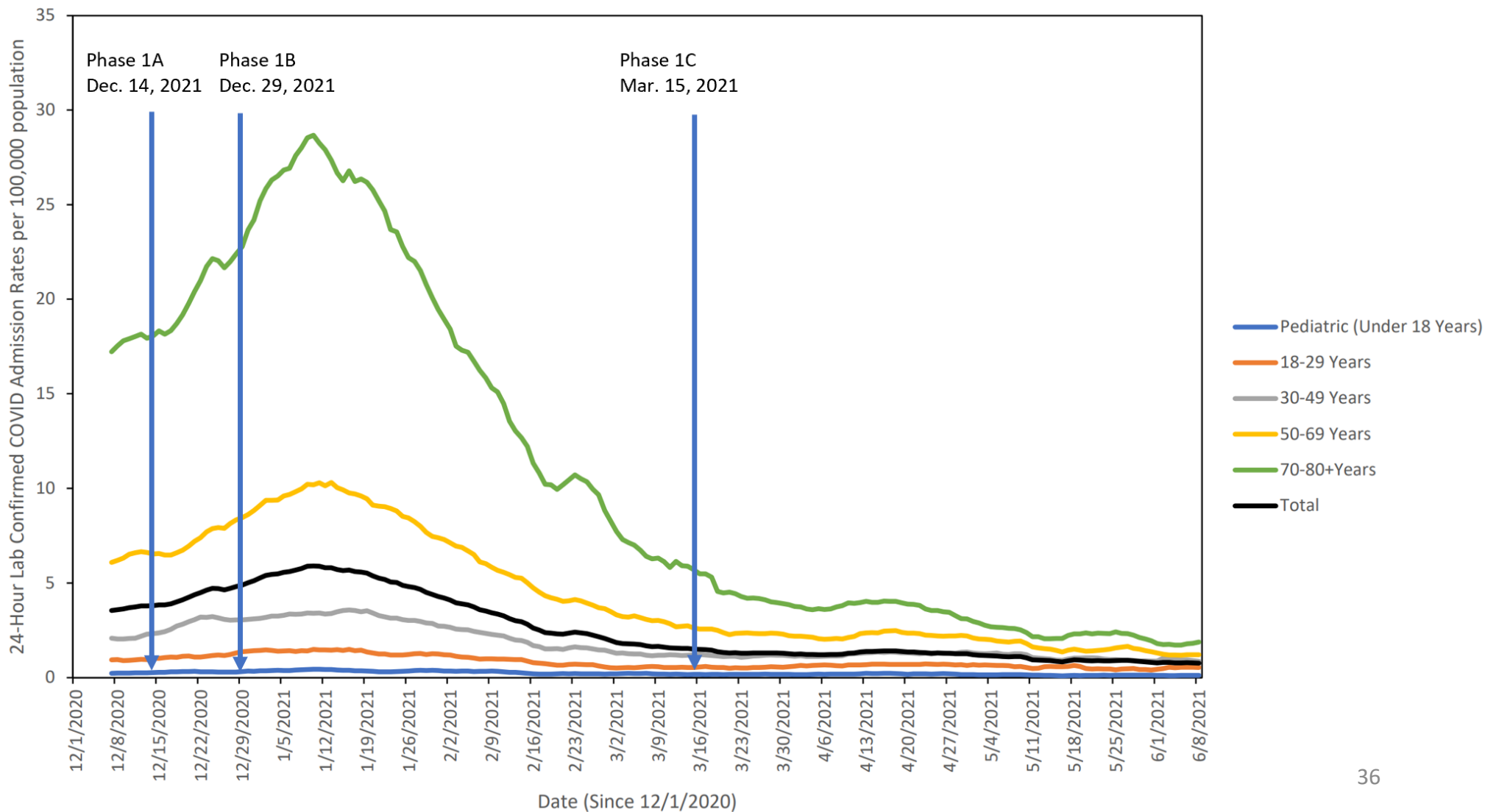


\*2020 rate calculated using TDC 2018 estimated population data and 2021 rate calculated using TDC 2019 estimated population data per 100,000 population. 35

**7-Day Rolling Average of 24-Hour Lab Confirmed COVID Hospital Admission Rate by Age per 100,000 population:  
12/01/20 – 06/08/21**

**Statewide:**

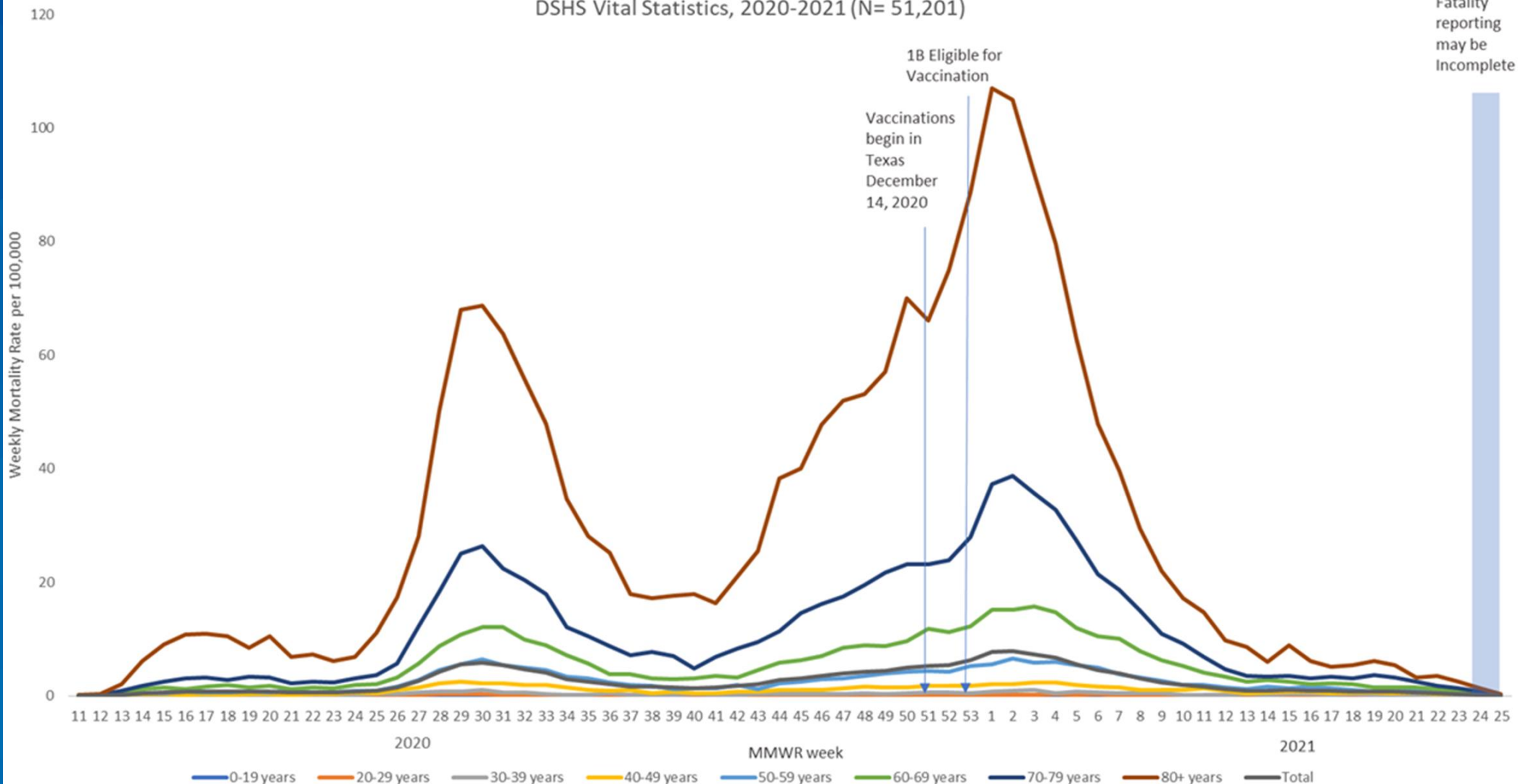
**Statewide: 7-Day Rolling Average of 24-Hour Lab Confirmed COVID Hospital Admission Rate by Age per 100,000  
population**



Texas Department of State Health Services



Weekly Age Specific COVID-19 Associated Mortality Rate per 100,000 Population by Age Group and MMWR week of Death, DSHS Vital Statistics, 2020-2021 (N= 51,201)



Data Source: COVID-19 associated Fatalities, Center for Vital Statistics, Texas Department of State Health Services (DSHS) as of March 24, 2021. Data Notes: DSHS is reporting COVID-19 fatality data based on death certificates. A fatality is counted as a COVID-19 fatality when the medical certifier attests on the death certificate that COVID-19 is a cause of death. Fatalities are displayed by age group and date of death, presenting a more complete view of deaths over time. DSHS graphs reflect the date of death, and weekly totals may change as death certificates are filed or amended. By law, death certificates must be filed within 10 days of death and may be amended later. Data displayed should be treated as subject to a amendment, including date of death.



# Population Immunity



TEXAS  
Health and Human  
Services

Texas Department of State  
Health Services

# CDC: Nationwide Commercial Laboratory Seroprevalence Survey

April 2021 (Second Half)

Seroprevalence Estimate  
**33.9%**

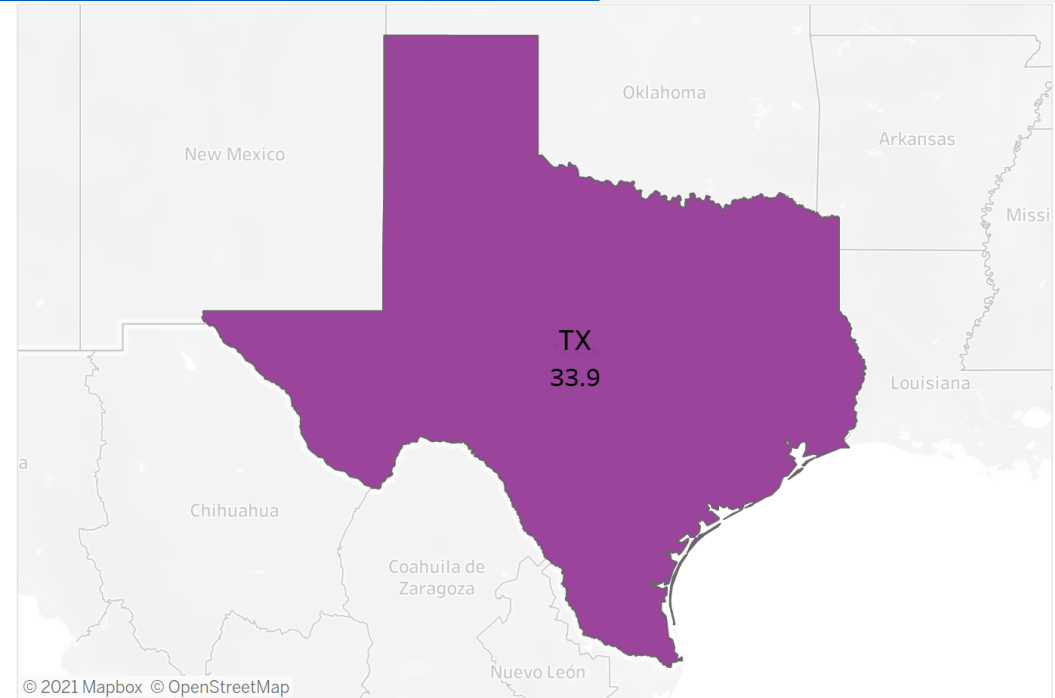
95% Confidence Interval: 29.9%-38.6%

Number of Estimated Infections  
**9,453,000**

95% Confidence Interval: 8,343,000-10,750,000

Total Number of Cases Reported by End of 4/30/2021  
**2,883,494**

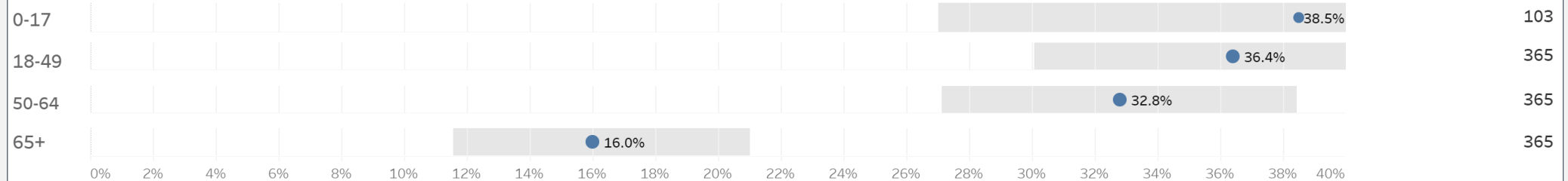
Antigen target:  
Nucleocapsid (% infected)



Catchment Area: Statewide

Number of Samples Tested: 1,198

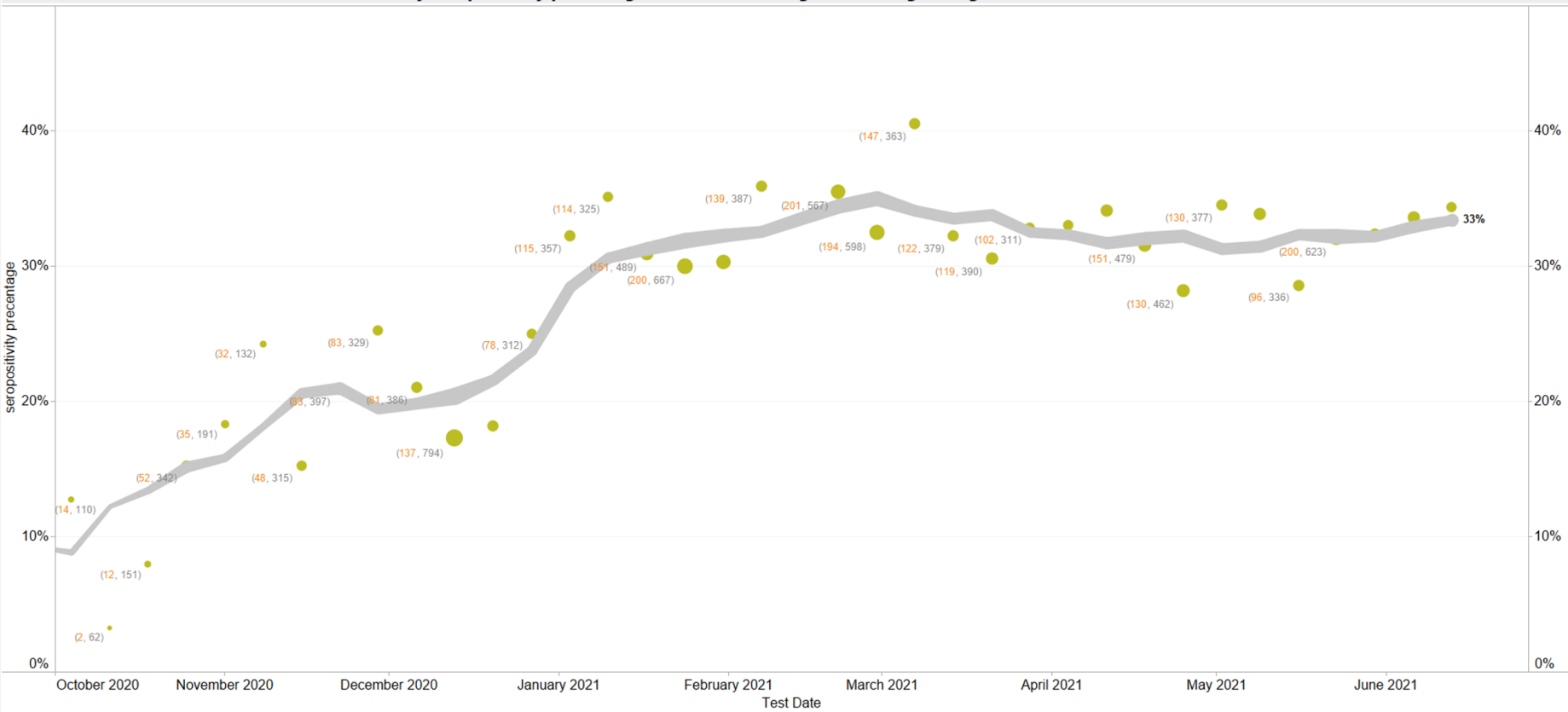
Age Specific Seroprevalence Estimate



# Texas CARES- Preliminary Findings

Texas CARES [Core]  
Enrollment & Seropositivity over time

Weekly seropositivity percentages and 5-weeks weighted moving average - (Roche Total Ab- N tests)



Test type  
Roche Total Ab- N

window-size  
5

Measure Names  
■ seropositivity percentage  
■ seropositivity weighted movi.

tests-count  
 • 1  
 • 200  
 • 400  
 • 600  
 • 794



Texas Department of State Health Services

The weekly trends of seropositivity percentage and seropositivity weighted moving average along Test date. Color shows details about seropositivity percentage and weighted moving average. Size shows participant-count. For pane Seropositivity percentage: The marks are labeled by (positive-count, participant-count). For pane Weighted moving average: The marks are labeled by weighted moving average. Thickness of weighted moving average line is proportional to participant-count. The data is filtered on TestType.  
 Weighted moving average = WINDOW\_SUM( positive-count , -window-size/2, +window-size/2 ) / WINDOW\_SUM( participant-count , -window-size/2, +window-size/2 ). window-size is selected by user.



## COVID-19 Vaccination in Texas

DSHS is partnering with vaccine providers across the state to ensure vaccine will be accessible to all Texans at no cost. Visit the DSHS COVID-19 Vaccine Information page for more details on phases and tiers, and other vaccine info here: <https://www.dshs.texas.gov/coronavirus/immunize/vaccine.aspx>



**TEXAS**  
Health and Human  
Services

Texas Department of  
State Health Services

### Percentage Measure to Show

- Percentage of Population 12+ Vaccinated with At Least One Dose
- Percentage of Population 12+ Fully Vaccinated
- Percentage of Population 65+ Vaccinated with At Least One Dose
- Percentage of Population 65+ Fully Vaccinated

**57.24%** of Texas State Population Vaccinated

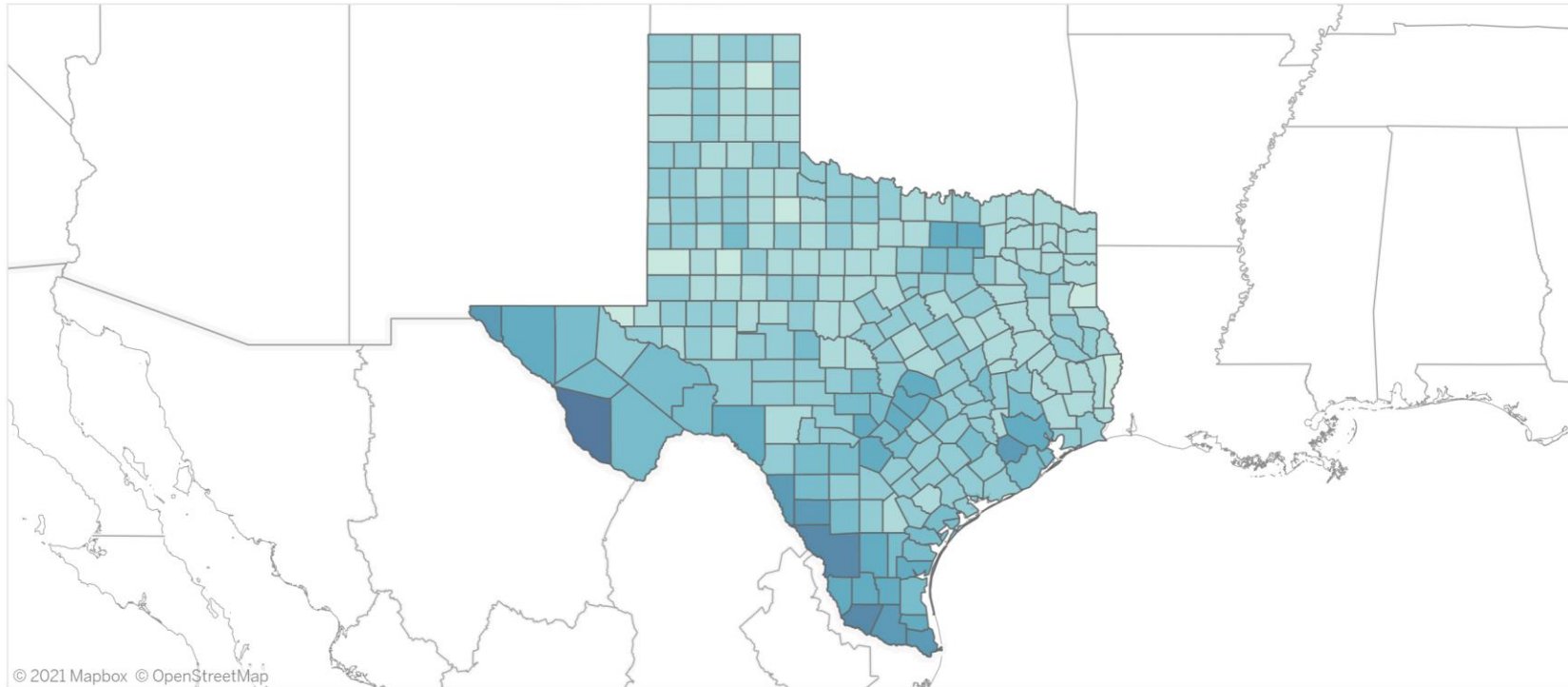
### Percentage of County Population Vaccinated

19.07%

99.99%

This dashboard is updated by 4:00 pm each day with data as of 11:59 pm the previous night. See the About the Data tab for more information on data sources.

### Percentage of Population Vaccinated for COVID-19



Doses Administered

**24,600,172**

People Vaccinated

**13,777,559**

People Fully Vaccinated

**11,784,663**

State Doses Shipped

**21,597,840**

Last Updated:  
06/27/2021 12:30 pm



**TEXAS**  
Health and Human  
Services

Texas Department of State  
Health Services

# COVID-19 Vaccination in Texas

DSHS is partnering with vaccine providers across the state to ensure vaccine will be accessible to all Texans at no cost. Visit the DSHS COVID-19 Vaccine Information page for more details on phases and tiers, and other vaccine info here: <https://www.dshs.texas.gov/coronavirus/immunize/vaccine.aspx>



Texas Department of State Health Services

### Percentage Measure to Show

- Percentage of Population 12+ Vaccinated with At Least One Dose
- Percentage of Population 12+ Fully Vaccinated
- Percentage of Population 65+ Vaccinated with At Least One Dose
- Percentage of Population 65+ Fully Vaccinated

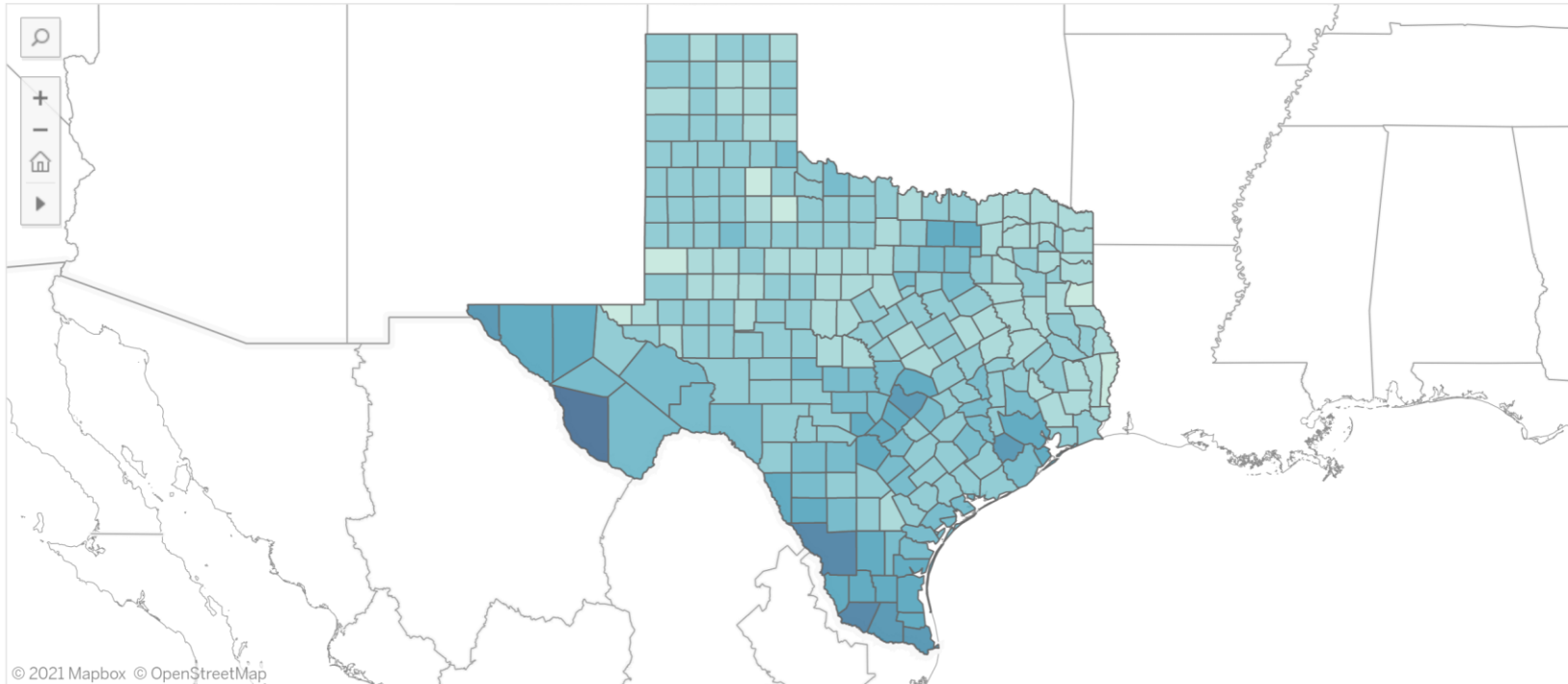
**48.96%** of Texas State Population Vaccinated

### Percentage of County Population Vaccinated

14.88%

85.20%

### Percentage of Population Vaccinated for COVID-19



This dashboard is updated by 4:00 pm each day with data as of 11:59 pm the previous night. See the About the Data tab for more information on data sources.

Doses Administered

**24,600,172**

People Vaccinated

**13,777,559**

People Fully Vaccinated

**11,784,663**

State Doses Shipped

**21,597,840**

Last Updated:  
06/27/2021 12:30 pm



Texas Department of State Health Services

# Estimated Population Immunity

- Herd (population) immunity is resistance to spread of infection when a large proportion of a population has immunity
- Natural Immunity
  - Confirmed cases as of 6/27/2021: 2.54M
    - Infections likely 3-4 times higher than confirmed cases
      - Est. proportion of population previously infected: ~26%-35%
    - Recent seroprevalence measurements: 33-34%
- Vaccine Immunity
  - Total Texans fully vaccinated as of 6/27/2021: 11,784,663
    - Proportion of Texans fully vaccinated: 41%
  - Proportion of Texans not eligible for vaccine: ~17%

# Important Considerations for Population Immunity

- Varying transmissibility between variants
  - Previously circulating SARS-CoV-2 vs B.1.1.7 vs B.1.617.2
- Waning immunity after natural infection and vaccine
- Varying levels of protection from vaccines
  - 1 vs 2 doses of vaccine
  - Different vaccine types
  - Different variants
- Uneven vaccination coverage
  - Age groups
  - Geographic areas
- Attainability

# Thank you!



[dshs.texas.gov/coronavirus](https://dshs.texas.gov/coronavirus)

Follow TexasDSHS on [Twitter](#) , [Facebook](#) , [YouTube](#) and [Instagram](#) or visit [www.dshs.texas.gov](https://www.dshs.texas.gov)