

ACTCR Meeting

Summer 2020 (July 29 and August 21, 2020)

Texas Cancer Registry

Texas Department of State Health Services



TEXAS
Health and Human
Services

Texas Department of State
Health Services

Agenda – July 29

Part I: July 29, 2020

I. Welcome – Maria Hoang Tran, MPH, CTR, ACTCR Chair

- | | |
|----------------|--|
| 12:00–12:10 pm | <ul style="list-style-type: none">• Call to Order• Introduce New Member• Transition to New Officers<ul style="list-style-type: none">◦ Chair—Philip Lupo, PhD, MPH◦ Vice-Chair/Chair-Elect—Sandi Pruitt, PhD, MPH• Approval of Minutes |
|----------------|--|

II. General Update – Melanie Williams, PhD, TCR Branch Director

- | | |
|----------------|---|
| 12:10–12:30 pm | <ul style="list-style-type: none">• COVID-19 Impact on TCR Operations and Data Collection• Staffing Update• CDC-NPCR Cooperative Agreement Update—Years 3 and 4• SEER Application Update• Call for Data<ul style="list-style-type: none">◦ 2017 Results◦ Status for 2018• 87th Legislative Session |
|----------------|---|

III. Epidemiology Update— Saroj Rai, PhD, MPH, Epidemiology Manager

- | | |
|----------------|---|
| 12:30–12:50 pm | <ul style="list-style-type: none">• Review Progress on 2020 Data Dissemination Plan• New TCR data products published January–July 2020• Feedback and Suggestions for 2021 data products |
|----------------|---|

V. Member Updates/New Business – Group Discussion

- | | |
|---------------|--|
| 12:50–1:00 pm | <ul style="list-style-type: none">• Member Updates• Next meeting – September 11, 2020 |
|---------------|--|

VI. Adjourn

Welcome

Maria Hoang Tran, MPH, CTR, CTR, ACTCR Chair



TEXAS
Health and Human
Services

Texas Department of State
Health Services

Welcome

- Call to Order
- Introduce new ACTCR Member
 - Laura Wood, American Cancer Society
- Transition to new Officers
 - Chair – Philip Lupo, PhD, MPH
 - Vice-Chair/Chair-Elect – Sandi Pruitt, PhD, MPH
- Approval of Minutes (October 2019 meeting)

General Update

Melanie Williams, PhD, TCR Branch Manager



Texas Department of State
Health Services

COVID-19 Impact of TCR Operations and Data Collection

- Since mid-March TCR staff have been working from home.
- Successfully transitioned from no telework to 100% telework.
- Most TCR staff have been assigned temporary COVID-19 job duties at some point over the past several months.
- Impact on registry data collection and timeliness of reporting is still being assessed.

COVID-19 Data Linkage

- NCI contacted TCR about a data linkage to study the impact of COVID-19 on cancer patients.
- The study will look at:
 - Risk of COVID-19 and related complications in current cancer patients and survivors vs those without a history of cancer
 - Risk of death in current cancer patients and survivors with COVID-19 vs those with COVID-19 without a history of cancer
 - Risk of COVID-19 and complications by cancer site/type
 - How risk factors (i.e., age, sex, time since diagnosis, first course of treatment) affect COVID-19 morbidity and mortality among cancer patients and survivors
- TCR and DSHS are currently looking at the feasibility and ability to participate in this data linkage.

Staffing Update

- In August of 2017 out of 53 positions, the TCR had 15 vacancies.
- August 2018 and 2019, reduced to 11 vacancies.
- As of August 2020 only 4 vacancies!
 - Program Specialist V
 - Program Supervisor V
 - Training Specialist IV
 - System Analyst II

CDC NPCR Cooperative Agreement Update

- Submitted Year 3 Progress Report and Year 4 Workplan in January 2020
- Year progress report received commendation and no deficiencies were noted
- The TCR received a level (\$1,988,315) Year 4 funding with no requested budget revisions
- Year 4 workplan was accepted without questions or revision

SEER Application

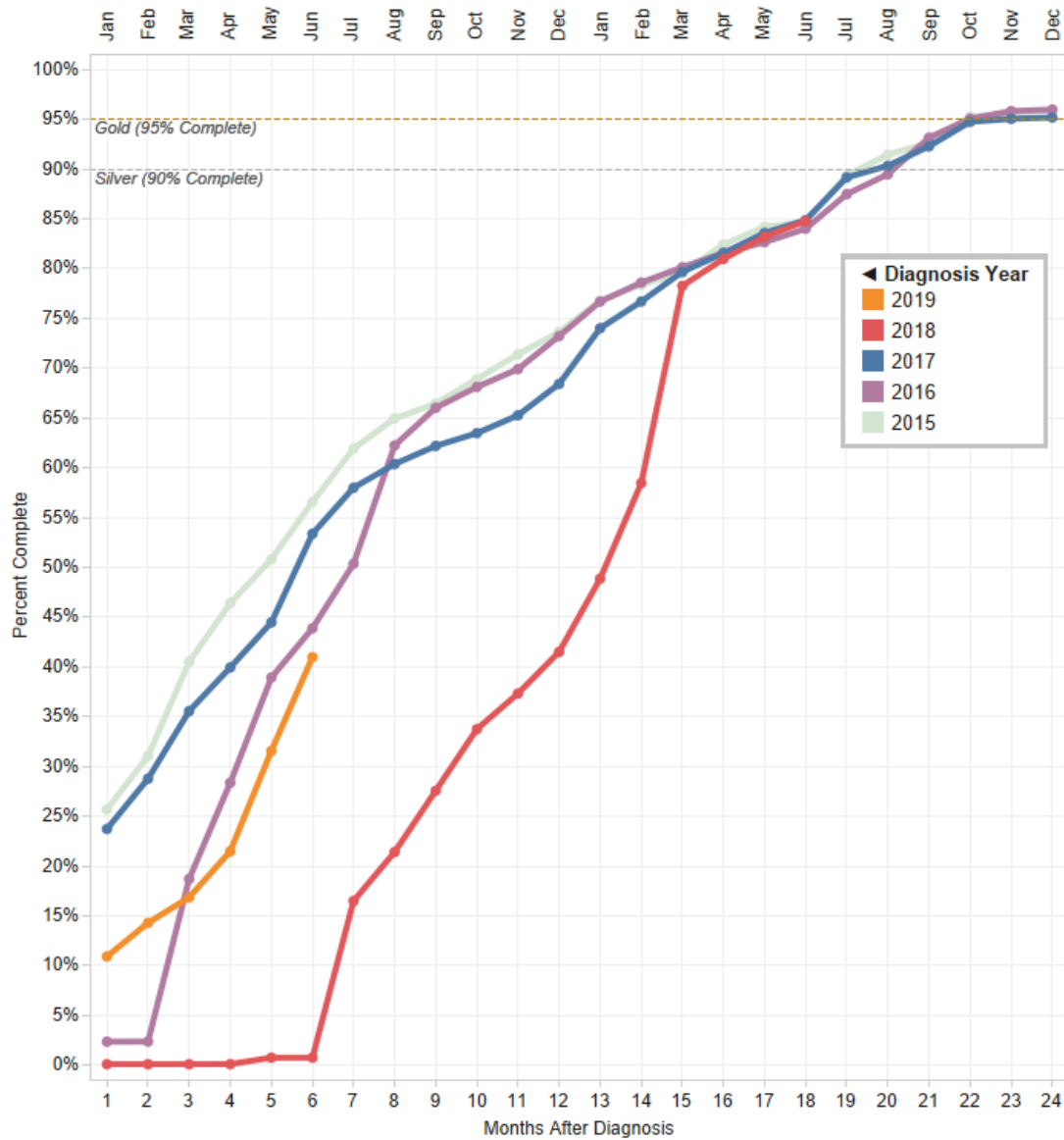
- In February 2020, TCR submitted a proposal to join the National Cancer Institute Surveillance, Epidemiology and End Results program.
 - Total proposed cost — \$9,699,727 (over 7.5 years)
 - Funding would support:
 - Migration to SEER*DMS software
 - 9 new TCR staff positions to meet SEER requirements and projects
 - Participation in ancillary studies and additional projects
 - Participation in a Virtual Tissue Repository
 - Participation in the Virtual Pool Registry
- Currently, SEER is on track to announce award recipients in Fall 2020.

Calls for Data

- Diagnosis Year 2017
 - Submitted data to NAACCR in November 2019 and NPCR in January 2020
 - Received NAACCR Gold Certification for the 14th time
 - Achieved NPCR “High Quality Data Standards” and recognized as CDC-NPCR Registry of Distinction
- Diagnosis Year 2018
 - 87.7% complete (as of 7/28/20)
- Diagnosis Year 2019
 - 44.9% complete (as of 7/28/20)

Percent Complete by Diagnosis Year

Historical Trends 1 to 24 Months After Diagnosis



87th Legislative Session

- DSHS and CHI Division are continuing to monitor and review plans for 87th Legislative Session.
- There are no proposed changes to TCR state funding.
- There are no proposed changes to TCR statutes.

Epidemiology Update

Saroj Rai, PhD, MPH, TCR Epidemiology Manager



TEXAS
Health and Human
Services

Texas Department of State
Health Services

2020 Data Dissemination Plan

- Published all annual web tables to the TCR website
- Updated Limited-Use Data File and Web Query Tool through diagnosis year 2017
- Published 2020 TCR Annual Legislative Report on DSHS website (link available on TCR website)
- Pushed back web reports and Cancer in Texas 2020 publication until August–September 2020 due to Covid-19

2020 Data Dissemination Plan — Coming Soon!

Cancers Associated w/ Modifiable Risk Factors <i>Human papillomavirus (HPV)-associated cancers</i>	Web Report	Website	Biennial	July	Under Final Review
Cancers Associated w/ Modifiable Risk Factors <i>Overweight/Obesity-associated cancers</i>	Web Report	Website	Biennial	July	Under Final Review
Cancers Associated w/ Modifiable Risk Factors <i>Alcohol-associated cancers</i>	Web Report	Website	Biennial	July	In progress
Cancers Associated w/ Modifiable Risk Factors <i>Tobacco-associated cancers</i>	Web Report	Website	Biennial	August	In progress
Liver Cancer in Texas	Web Report	Website	Biennial	August	In progress
Cancer Health Disparities <i>Differences in cancer incidence and mortality among specific population groups in Texas</i>	Web Report	Website	Biennial	August	In progress
Cancer in Rural Texas – new in 2020	Web Report	Website	Biennial	August	In progress
Cancer in the Oldest Old (≥85) – new in 2020	Web Report	Website	Biennial	August	In progress
HIV-associated cancers – new in 2020	Web Report	Website	Biennial	August	In progress
Rare cancers – new in 2020	Web Report	Website	Biennial	August	In progress
Cancer in Texas <i>Comprehensive report including cancer burden, disparities, children and adolescents, risk factors, how data are used</i>	Report	Website	Annual	September	In progress
Texas Cancer Reporting News – Fall <i>TCR’s newsletter geared toward cancer reporters</i>	Newsletter	Website/ Email	Biannual	October	Not Started
CDC Success Story <i>Report detailing how registry data have been used to impact public health</i>	Report	Available by Request	Annual	October	Not Started

Published TCR Data Products



TEXAS
Health and Human
Services

Texas Department of State
Health Services

TCR Data Products

January–July 2020

Data Tables	
Limited-Use Data, 1995-2017	Updated limited-use cancer incidence datasets to include cases diagnosed through 2017
Expected Cancer Cases and Deaths, 2020	Projected numbers of new cancer cases and deaths for all primary cancer sites are available statewide, for each Public Health Region, and for counties with a population of at least 100,000
Cancer Incidence and Mortality in Texas, 2013-2017	Age-Adjusted Cancer Incidence Rates and Counts by Sex and Race/Ethnicity, and by Sex and Age at Diagnosis Age-Adjusted Cancer Mortality Rates and Counts by Sex and Race/Ethnicity, and by Sex and Age at Death
Cause-Specific Survival for Malignant Cancers Diagnosed 2008-2017	Cause-specific survival adjusts the observed survival for competing causes of death by only counting deaths due to the specific cancer site
Adolescent and Young Adult Cancer in Texas, 2013-2017	Incidence rates by SEER AYA Site Recode Major Site Groups available statewide and for each Public Health Region
Childhood and Adolescent Cancer in Texas, 2008-2017	Statewide incidence rates by ICCC Major Site Groups and Extended Classification Tables Incidence rates by ICCC Major Site Groups for each Public Health Region
Texas Prevalence Count as of January 1, 2017	5-year and 21-year limited duration prevalence as of January 1, 2017
Relative Survival for Malignant Cancers Diagnosed 2007-2016	Relative survival presents cancer survival adjusted for other causes of death by comparing the survival among patients with cancer, to the expected survival rates in a comparable population without cancer.
Data Visualization Tools	
TCR Web Query Tool, 1995-2017	Updated cancer incidence/mortality rates and mapping tool to include data through 2017
Publications	
Texas Cancer Registry Data Use	Provides an overview of how TCR data are used, including online cancer statistics resources, research journal publications and supported studies
TCR Data Dictionary	Contains descriptions of data items that are available from TCR for analysis and research
2020 TCR Annual Legislative Report	Annual report to the Texas Legislature
Texas Cancer Reporting News (Summer 2020)	Biennial newsletter to Texas cancer reporters

Reminder!
The homepage of the TCR website always lists our most recent publications.

Feedback and Suggestions for 2021 Data Products



Agenda – August 21

Part II: August 21, 2020

I. Welcome – Philip Lupo, PhD, MPH, ACTCR Chair	
12:00–12:05 pm	<ul style="list-style-type: none">• Call to Order
II. Other Updates— Group Discussion	
12:05–12:25 pm	<ul style="list-style-type: none">• National Childhood Cancer Initiatives<ul style="list-style-type: none">○ CDC NPCR-NOAH (STAR Project)○ National Childhood Cancer Registry (NCI/NAACR)
12:25–12:50 pm	<ul style="list-style-type: none">• Subcounty Cancer Data Projects<ul style="list-style-type: none">○ CDC National Environmental Public Health Tracking○ NCI/NAACCR Cancer Reporting Zone Project
III. Member Updates/New Business – Group Discussion	
12:50–1:00 pm	<ul style="list-style-type: none">• Next meeting – September 11, 2020
IV. Adjourn	

Other Updates

Group Discussion



TEXAS
Health and Human
Services

Texas Department of State
Health Services

National Childhood Cancer Initiatives

TCR is participating in two national childhood cancer initiatives:

- STAR Project
 - CDC
 - Data submitted via NPCR-NOAH
- National Childhood Cancer Registry
 - NCI/NAACCR



STAR Project

- CDC NPCR's STAR Project will improve the timeliness of pediatric, adolescent, and young adult cancers through a new reporting platform, NPCR-NOAH (National Oncology rapid Ascertainment Hub).
- The states piloting the system over next two years include: FL, KY, MN, NE, OH, RI, TX, and UT.



National Childhood Cancer Registry

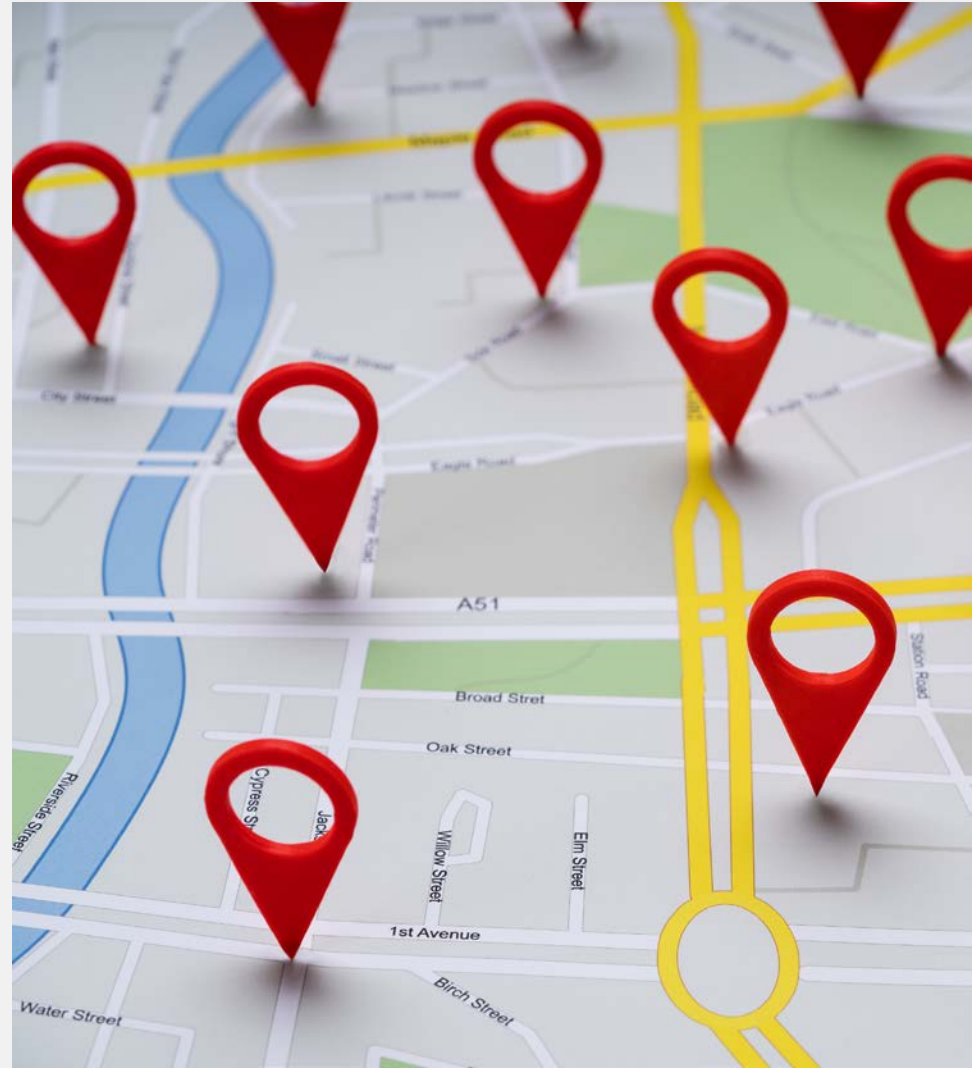
- The NCCR Initiative is a collaboration between SEER and NAACCR.
- The goal is to establish an infrastructure for a population-based set of data, known as NCCR, to support important research on childhood cancers.
- Also supporting complimentary opportunity for NCI-designated cancer centers.



Subcounty Cancer Data Projects


TCR is participating in two subcounty cancer data initiatives:

- National Environmental Public Health Tracking (CDC)
- Cancer Reporting Zone Project (NCI/NAACCR)




Subcounty Cancer Data Background



- County is not a very satisfactory geographic unit for presenting cancer statistics
 - Larger counties often have very heterogenous populations
 - Smaller counties often have data suppressed due to smaller numbers of cases
 - Texas county population examples:
 - Harris County: > 4.7 million
 - Loving County: 134
- 

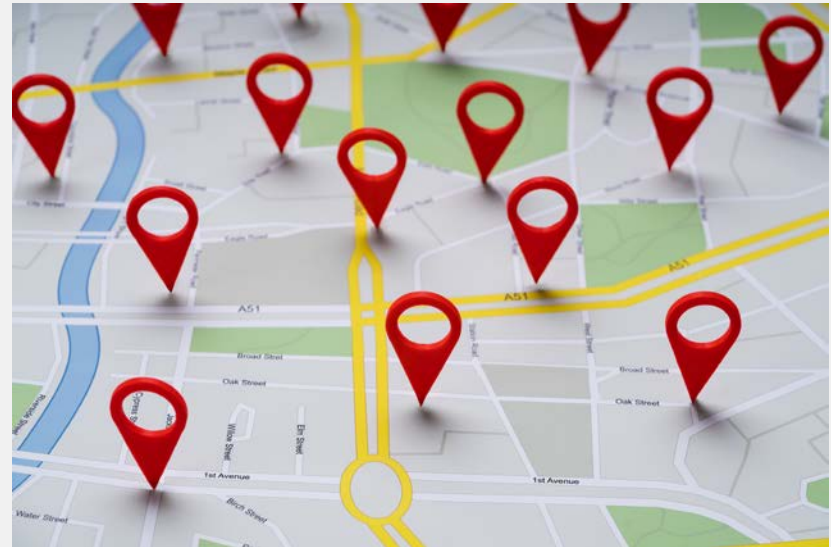
Subcounty Cancer Data Project Background



- Census tracts or collections of census tracts are a much better unit for analysis but are generally unavailable due to identifiability issues
 - CDC, NCI and NAACCR are working to solve these issues
 - Additionally working on census tract poverty, SES, and urbanicity variables
- 

Environmental Public Health Tracking (CDC)

- CDC's Cancer Surveillance Branch is working with the National Center for Environmental Health Tracking Program to display maps that show sub-county cancer data.
- 21 cancer registries participated in the pilot. They recommended standard spatial and temporal aggregations for cancer display.
- These data and new displays should be available on the CDC's Environmental Health Tracking website in 2021.




Cancer Reporting Zone Project (NCI SEER and NAACCR)

- NCI SEER and NAACCR are collaborating to develop a set of cancer reporting zones across the US that are more suitable for cancer data reporting than counties.
- County level data analysis will continue, in addition to the new cancer reporting zones.



Subcounty Cancer Data Project




- A pilot study using cancer data from California and Louisiana SEER cancer registries has been completed and the resulting zones satisfied the predefined criteria.
 - These zones subdivide large population urban counties and are collections of smaller counties (or portions of counties) and have a minimum population size of 50,000.
 - Texas was selected to expand the project.
 - Plan is to release Texas below-county level cancer statistics, and other socio-demographic factors relevant to understanding the cancer burden and identifying areas in need of interventions.
 - Goal is to make available in 2021.
- 

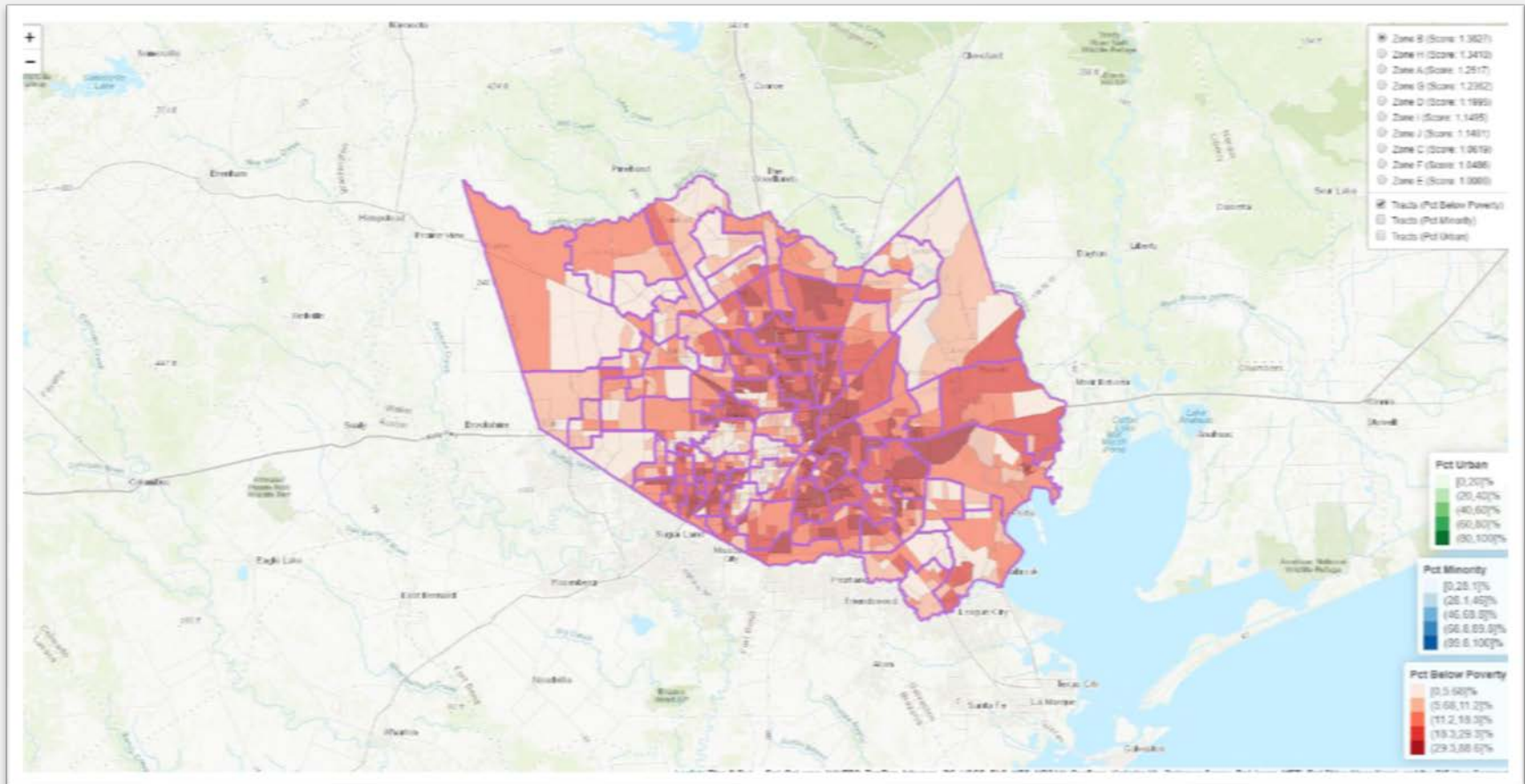
Cancer Reporting Zone Project – Custom Crafted Areas



In each respective state, zones will be custom crafted to represent areas that:

1. Are meaningful to stakeholders in terms of cancer reporting and cancer interventions;
 2. Comprise adjacent census tracts and smaller counties (or portions of counties) that sum to population sizes that are sufficiently large to support stable rates;
 3. Collectively cover the entire population of the state;
 4. Are homogeneous with respect to important socio-demographic characteristics and are compact in shape;
 5. Have large enough case counts for data reporting, without compromising confidentiality; and result in a relatively small proportion of areas with suppressed values, although for rarer cancer sites suppression will be inevitable especially when producing rates stratified by sex and/or race.
- 

Subcounty Cancer Data Project: Harris County Example



Target population size

- What should the target population be?
 - Zones with smaller populations will have more geospatial resolution
 - Zones with larger populations will have fewer suppressed cells
- HIPAA minimum population size: 20,000
- If zones with 15 or fewer cancer cases are suppressed, how much suppression will there be?
 - By site; by site & sex; by site, sex, & race/ethnicity
- Ideally, the same population size for all sites
- Can reduce suppression by aggregating years
 - Case count estimates 1-year, 5-years, 10-years

Plans for zone-level reporting

- Websites with cancer rates by zone
 - California example: [CaliforniaHealthMaps.org](https://www.californiahealthmaps.org)
- SEER*Stat database support
- Report data by:
 - Site
 - Site and gender
 - Site, gender, and race/ethnicity
- Range of reporting years can vary to meet suppression requirements
 - 1 year for common cancers
 - 5-10 years for less common cancers or more detailed breakdowns

Member Updates/ New Business

Group Discussion



TEXAS
Health and Human
Services

Texas Department of State
Health Services

Member Updates



New ACTCR Member Recommendations

- ACTCR has two member vacancies to meet CDC NPCR advisory committee requirements and to have representation from a wide range of stakeholder organizations.
 - Pathologist representative
 - UT School of Public Health representative
- Send suggestions/recommendations to Katie.Dahlquist@dshs.texas.gov.

Next Meeting

- September 11, 2020
- 11:30 a.m. – 1:30 p.m.
- Via teleconference



TEXAS
Health and Human
Services

**Texas Department of State
Health Services**