



Weekly Flu Surveillance Report

Week 08 - February 18th - February 24th, 2024

Disclaimer

Most cases of influenza are not reportable in the state of Texas, thus the data in this report was collected from hospitals, clinics, and schools throughout the region who have agreed to voluntarily submit data.

Definitions

ILI: Influenza-Like Illness. This is an illness that resembles the flu, but has not been confirmed. **Rapid:** These tests are typically done in-house to quickly test for influenza. **PCR:** These tests are generally more precise than rapid tests and are performed at the DSHS state lab and many commercial labs to confirm a case of influenza.

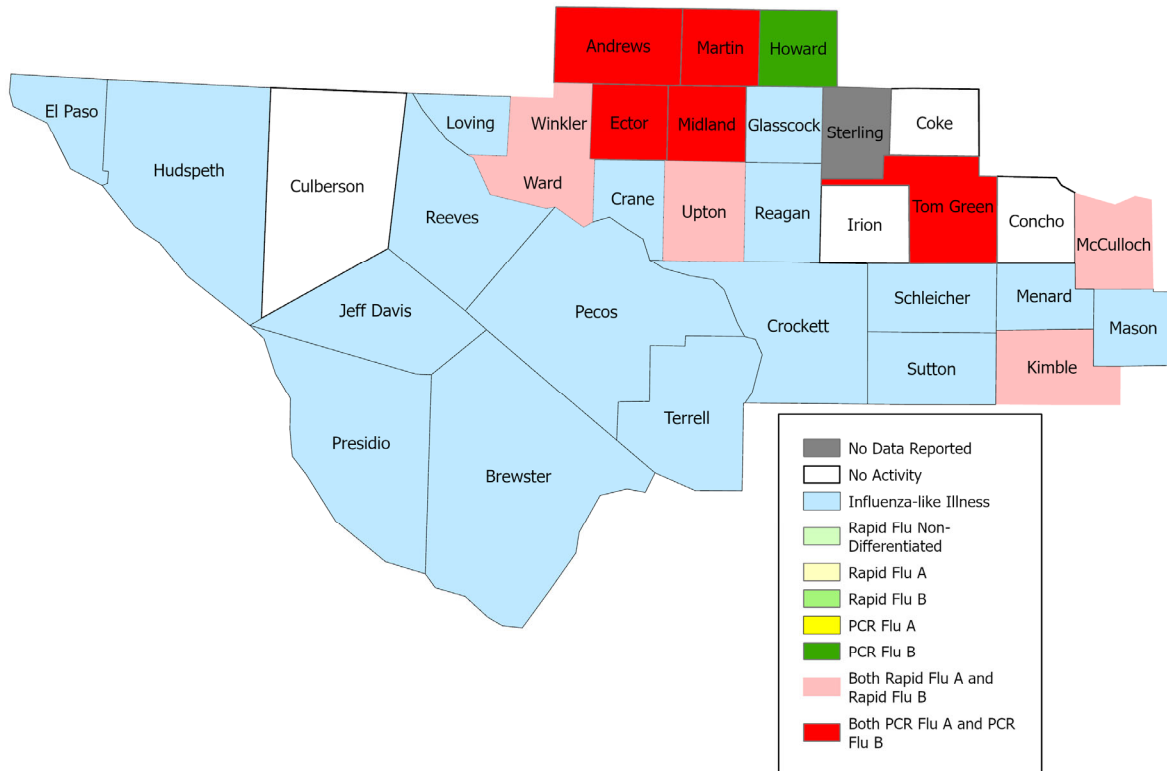
Summary Data

Condition	Week 08	Week 07	Week 06
Number of Counties Reporting (36 total)	→ 35	35	35
Number of Counties Reporting ILI	↓ 19	22	22
Number of Counties Reporting High Levels of ILI*	→ 10	10	11
Number of Counties Reporting Flu A	↓ 10	12	12
Number of Counties Reporting Flu B	↓ 11	12	12
Number of Counties Reporting Flu A & Flu B	↓ 10	12	12

The arrows represent changes from the previous week. A sideways arrow means there was no change in that condition.

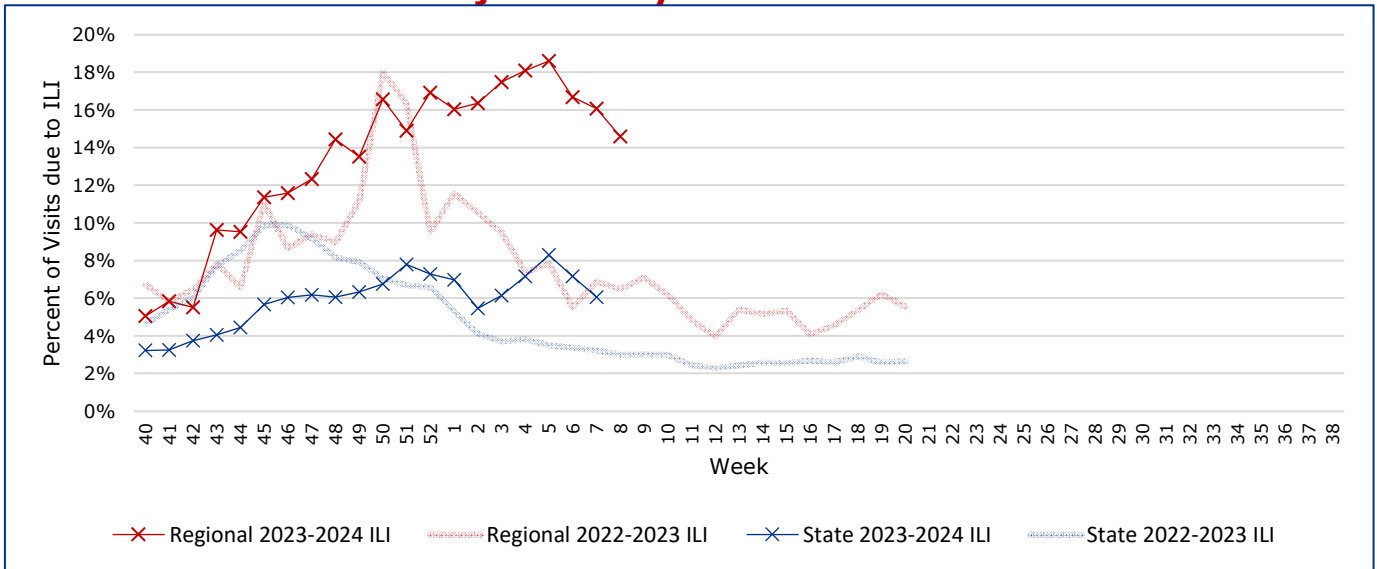
*Counties with total percent of visits due to ILI above 4.0% for the week are considered to have high/abnormal levels.

Map of Regional Flu Activity



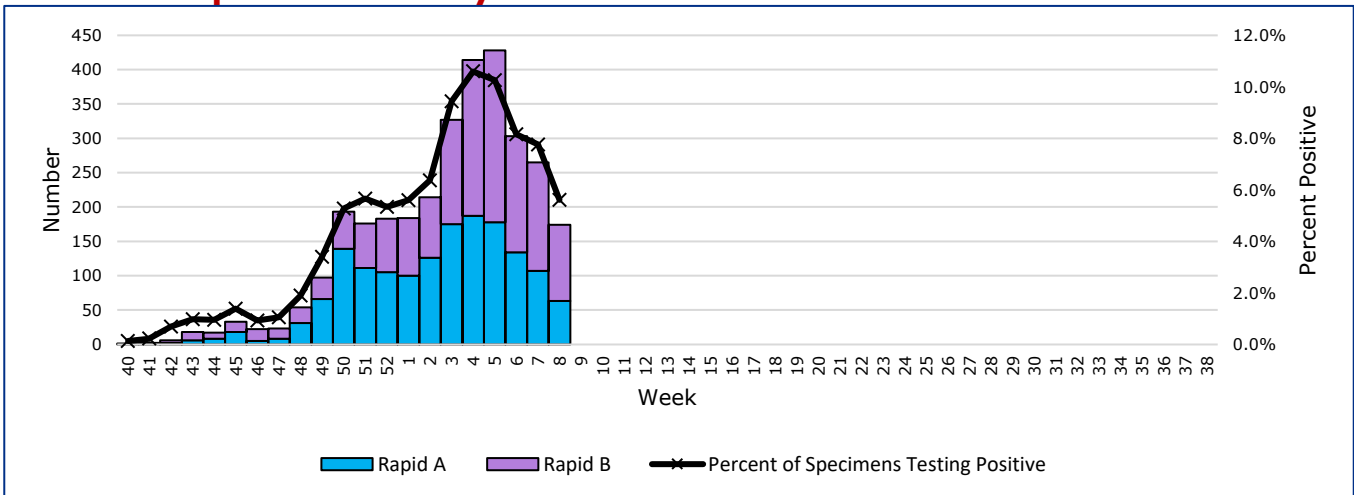
The map above depicts the previous week's reports of flu or influenza-like illness activity in each county. The legend on the bottom right of the map describes the meaning of each color.

Influenza-Like Illness Projections by Week



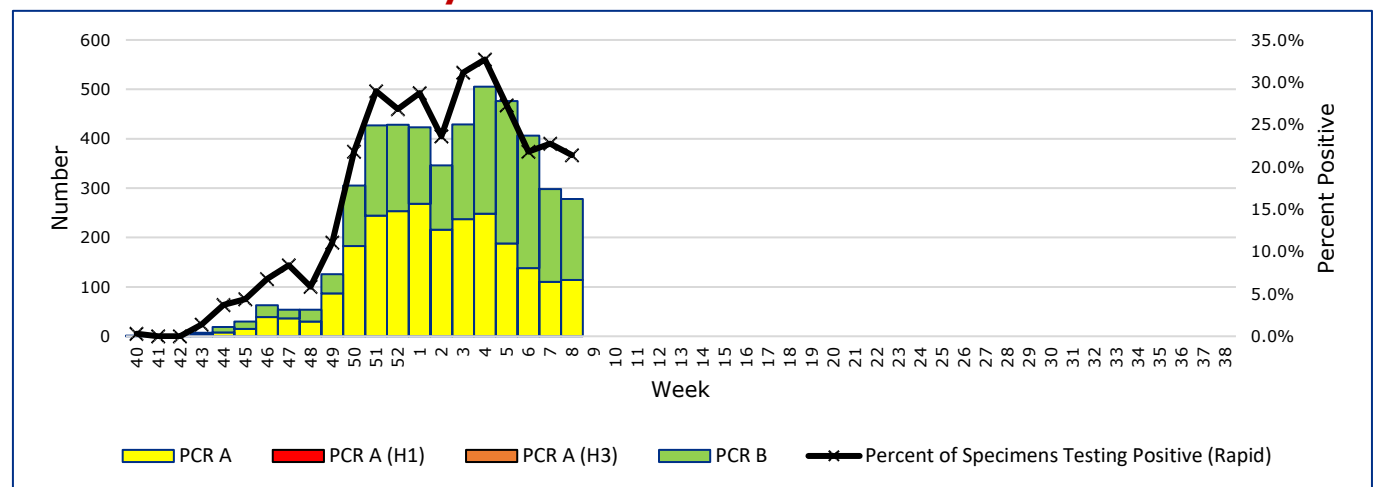
This chart documents the percentage of patient visits that were due to ILI at hospitals and clinics around the region, excluding confirmed COVID cases. It compares our region's data with the state's data and also compares to last flu season.

Positive Rapid Flu Tests by Week



This chart documents the number of rapid tests that have come back positive for flu A and flu B each week throughout the region.

Positive PCR Flu Tests by Week



This chart documents the number of PCR tests that have come back positive for flu A and flu B each week throughout the region.

Flu Data by County

County	Week 08				Week 07				Week 06			
	Patient Visits	% with ILI	Flu A	Flu B	Patient Visits	% with ILI	Flu A	Flu B	Patient Visits	% with ILI	Flu A	Flu B
Andrews	723	17%	8	14	670	11%	5	9	671	14%	4	11
Borden	2	0%	0	0	2	0%	0	0	2	0%	0	0
Brewster	85	0%	0	0	97	0%	0	0	92	0%	0	0
Coke	4	0%	0	0	5	0%	0	0	6	0%	0	0
Concho	25	0%	0	0	16	0%	0	0	25	0%	0	0
Crane	32	0%	0	0	41	0%	0	0	34	0%	0	0
Crockett	17	0%	0	0	7	0%	0	0	8	0%	0	0
Culberson	10	0%	0	0	8	0%	0	0	8	0%	0	0
Dawson	156	0%	0	0	144	0%	0	0	173	0%	0	0
Ector	6129	32%	60	129	5632	35%	62	145	6197	36%	75	155
El Paso	7624	0%	0	0	7168	0%	0	0	6984	0%	0	0
Gaines	141	0%	0	0	157	0%	0	0	180	0%	0	0
Glasscock	27	11%	0	0	2	0%	0	0	2	0%	0	0
Howard	617	5%	0	1	601	6%	4	3	592	5%	3	3
Hudspeth	20	0%	0	0	21	0%	0	0	14	0%	0	0
Irion	1	0%	0	0	0		0	0	2	0%	0	0
Jeff Davis	16	0%	0	0	17	0%	0	0	13	0%	0	0
Kimble	140	6%	1	1	149	8%	2	1	132	6%	2	3
Loving	2	0%	0	0	1	0%	0	0	4	0%	0	0
McCulloch	99	84%	5	6	116	81%	7	3	121	91%	9	15
Martin	193	9%	3	1	188	11%	2	4	206	12%	2	4
Mason	41	0%	0	0	30	0%	0	0	31	0%	0	0
Menard	13	0%	0	0	8	0%	0	0	15	0%	0	0
Midland	3156	17%	44	73	3025	18%	43	78	3307	19%	37	104
Pecos	158	0%	0	0	864	18%	30	43	887	22%	33	37
Presidio	180	7%	0	0	92	2%	0	0	167	13%	0	0
Reagan	20	0%	0	0	10	0%	0	0	26	0%	0	0
Reeves	214	0%	0	0	181	0%	0	0	188	0%	0	0
Schleicher	3	0%	0	0	2	0%	0	0	0		0	0
Sterling	0		0	0	1	0%	0	0	1	0%	0	0
Sutton	14	0%	0	0	20	0%	0	0	23	0%	0	0
Terrell	3	0%	0	0	3	0%	0	0	3	0%	0	0
Tom Green	1473	3%	32	27	1461	3%	27	38	1857	2%	51	52
Upton	151	17%	2	9	189	30%	8	6	167	44%	16	9
Ward	743	42%	10	9	733	48%	11	6	626	30%	32	12
Winkler	443	23%	12	5	524	27%	16	10	537	31%	8	32
Total	22675	14.6%	177	275	22185	16.1%	217	346	23301	16.9%	272	437

Flu-Associated Pediatric Deaths & Outbreaks

No flu-associated pediatric deaths have been reported in PHR 9/10 this flu season. In PHR 9/10, no flu outbreaks have been reported for Week 08.

For a more comprehensive look at respiratory illnesses circulating throughout Texas, please visit: <https://www.dshs.texas.gov/texas-respiratory-virus-surveillance-report> and select the "Current Texas Respiratory Virus Surveillance Report"