



Weekly Flu Surveillance Report

Week 08- February 19th- February 25th

Disclaimer

Most cases of influenza are not reportable in the state of Texas, thus the data in this report was collected from hospitals, clinics, and schools throughout the region who have agreed to voluntarily submit data.

Definitions

ILI: Influenza-Like Illness. This is an illness that resembles the flu, but has not been confirmed. **Rapid:** These tests are typically done in-house to quickly test for influenza. **PCR:** These tests are generally more precise than rapid tests and are performed at the DSHS state lab and many commercial labs to confirm a case of influenza.

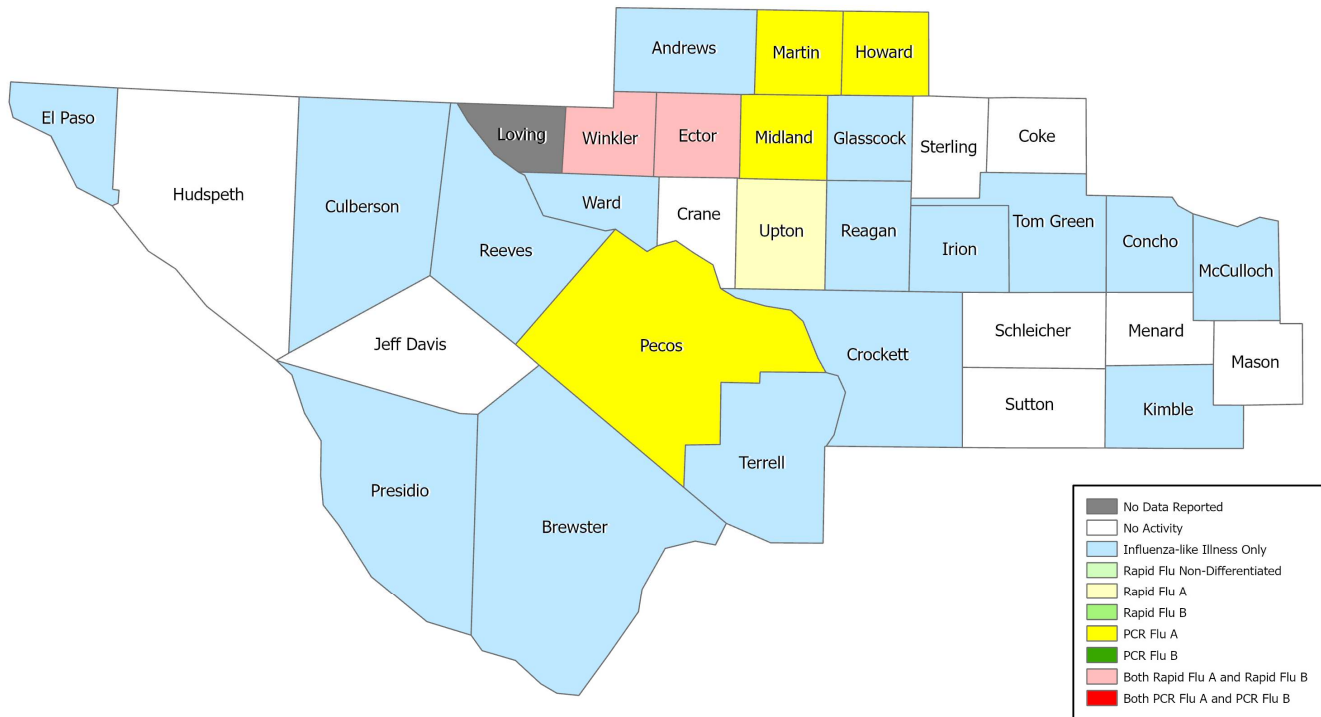
Summary Data

Condition	Week 08	Week 07	Week 06
Number of Counties Reporting (36 total)	↑ 35	33	34
Number of Counties Reporting ILI	↑ 17	13	16
Number of Counties Reporting High Levels of ILI*	↑ 8	4	6
Number of Counties Reporting Flu A	→ 7	7	7
Number of Counties Reporting Flu B	↓ 0	2	4
Number of Counties Reporting Flu A & Flu B	↓ 0	2	4

The arrows represent changes from the previous week. A sideways arrow means there was no change in that condition.

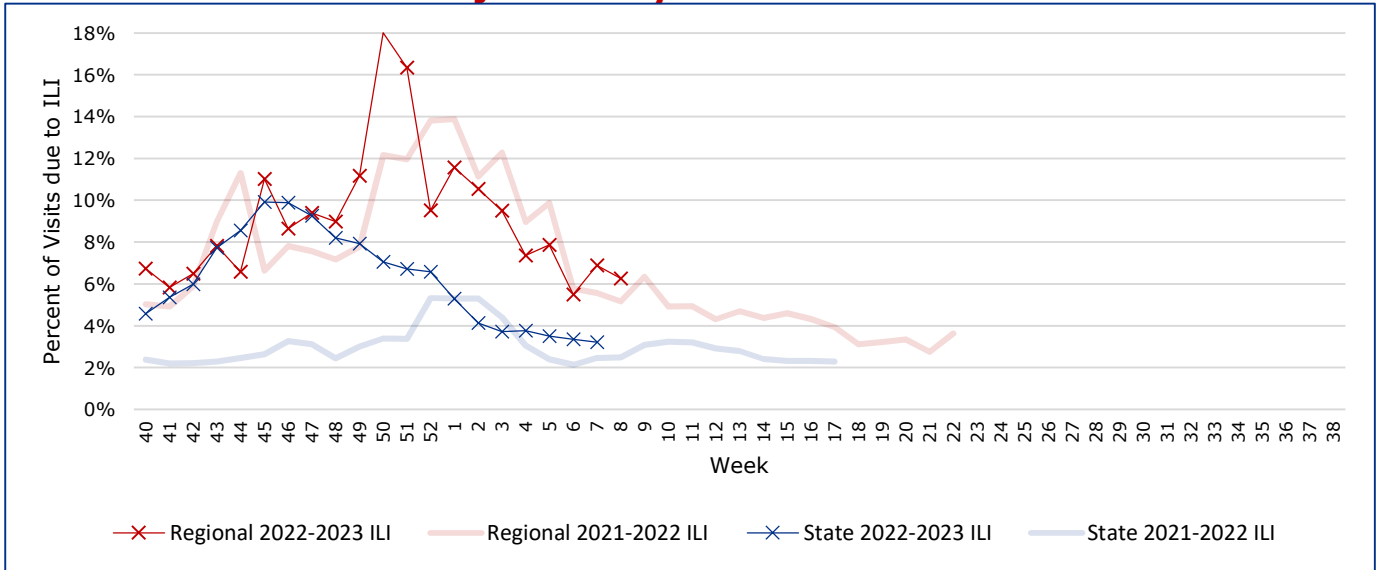
*Counties with total percent of visits due to ILI above 4.0% for the week are considered to have high/abnormal levels.

Map of Regional Flu Activity



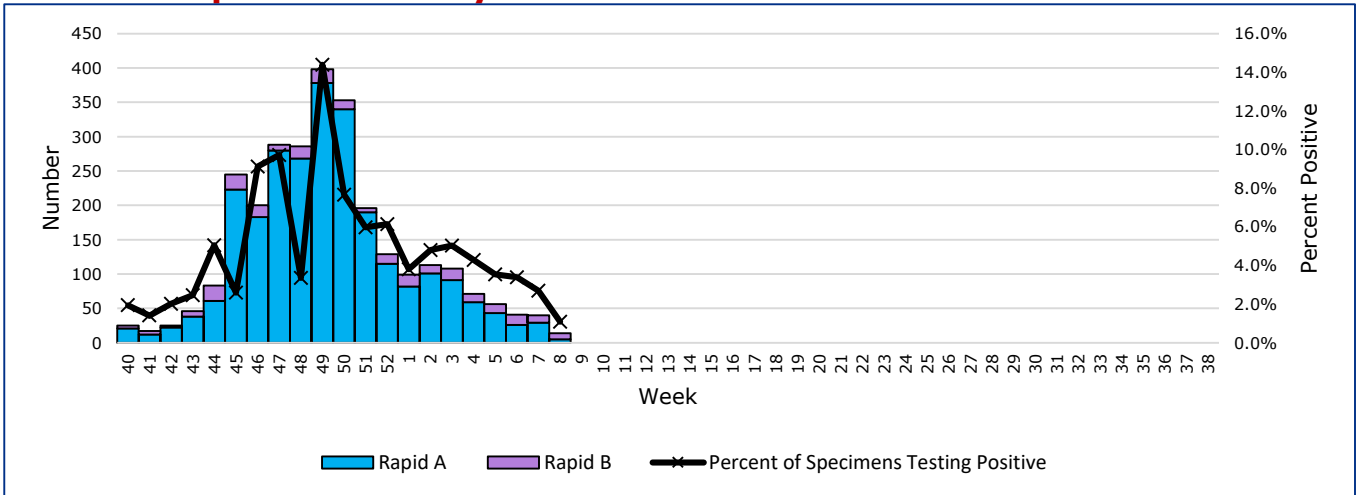
The map above depicts the previous week's reports of flu or influenza-like illness activity in each county. The legend on the bottom right of the map describes the meaning of each color.

Influenza-Like Illness Projections by Week



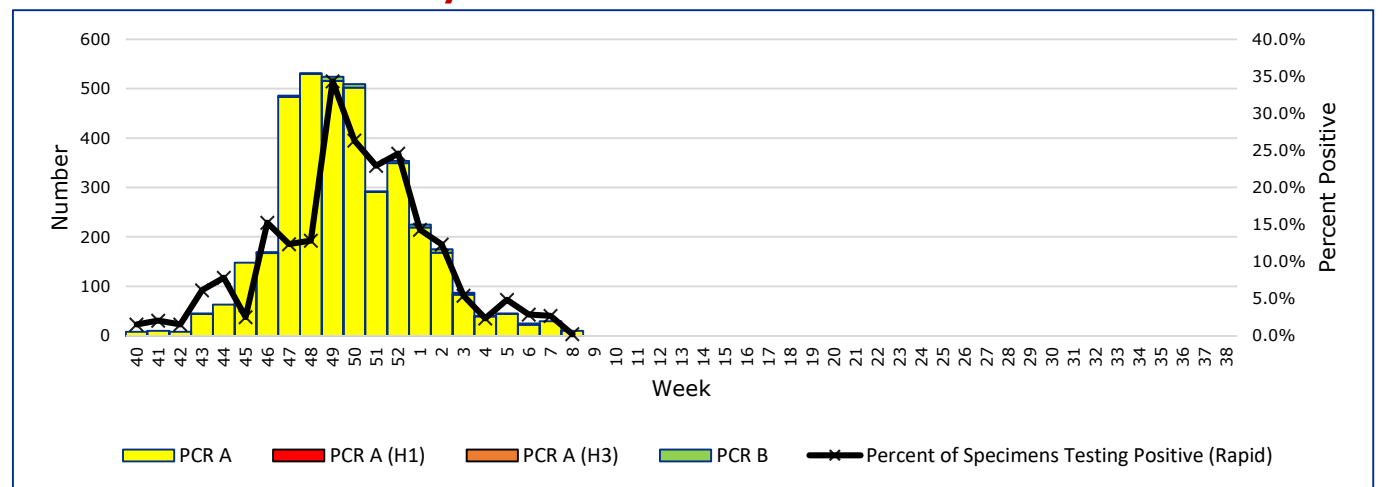
This chart documents the percentage of patient visits that were due to ILI at hospitals and clinics around the region, excluding confirmed COVID cases. It compares our region's data with the state's data and also compares to last flu season.

Positive Rapid Flu Tests by Week



This chart documents the number of rapid tests that have come back positive for flu A and flu B each week throughout the region.

Positive PCR Flu Tests by Week

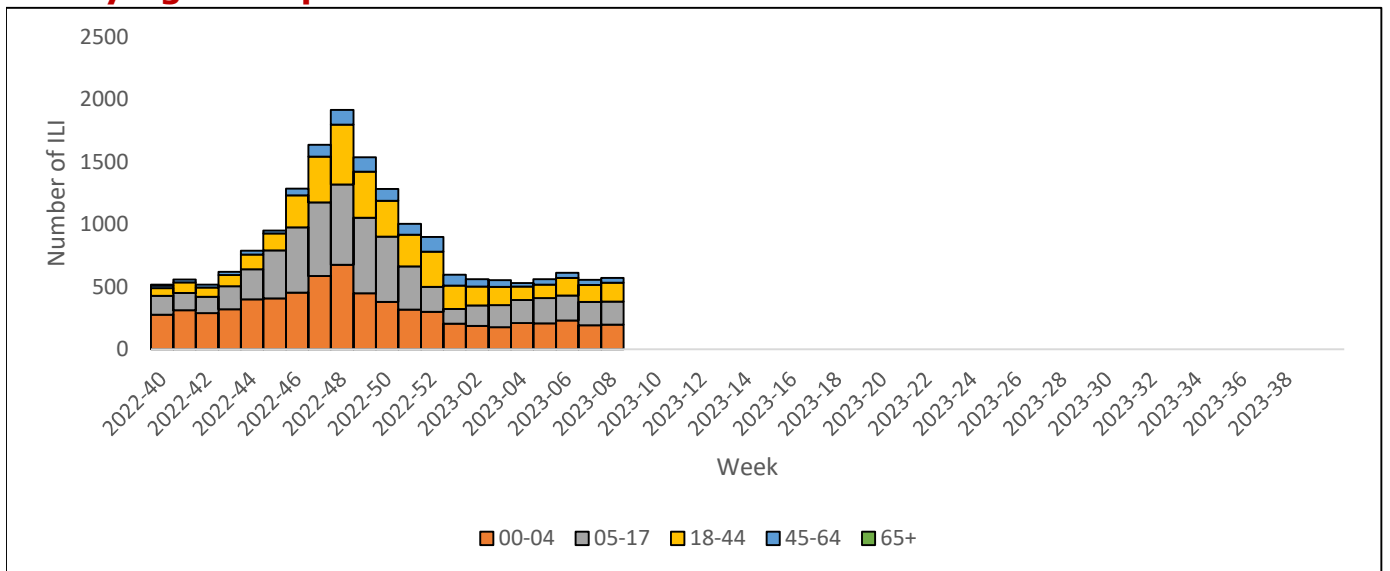


This chart documents the number of PCR tests that have come back positive for flu A and flu B each week throughout the region.

Flu Data by County

County	Week 08				Week 07				Week 06			
	Patient Visits	% with ILI	Flu A	Flu B	Patient Visits	% with ILI	Flu A	Flu B	Patient Visits	% with ILI	Flu A	Flu B
Andrews	522	16%	0	0	454	13%	4	0	479	16%	3	0
Brewster	72	0%	0	0	87	0%	0	0	88	0%	0	0
Coke	2	0%	0	0	5	0%	0	0	5	0%	0	0
Concho	22	0%	0	0	22	0%	0	0	20	0%	0	0
Crane	24	0%	0	0	43	0%	0	0	34	0%	0	0
Crockett	12	0%	0	0	10	0%	0	0	4	0%	0	0
Culberson	7	0%	0	0	5	0%	0	0	6	0%	0	0
Ector	5722	11%	7	8	5501	12%	17	3	5592	11%	13	9
El Paso	10042	0%	0	0	9808	0%	0	0	10580	0%	0	0
Glasscock	12	8%	0	0	8	0%	0	0	1	0%	0	0
Howard	491	5%	2	0	339	0%	0	0	374	0%	0	0
Hudspeth	23	0%	0	0	22	0%	0	0	19	0%	0	0
Irion	2	0%	0	0	0		0	0	1	0%	0	0
Jeff Davis	17	0%	0	0	11	0%	0	0	13	0%	0	0
Kimble	165	10%	0	0	4	0%	0	0	285	6%	1	0
Loving	0		0	0	1	0%	0	0	0		0	0
McCulloch	8	0%	0	0	12	0%	0	0	9	0%	0	0
Martin	184	9%	1	0	44	0%	0	0	53	0%	0	0
Mason	20	0%	0	0	24	0%	0	0	22	0%	0	0
Menard	7	0%	0	0	14	0%	0	0	18	0%	0	0
Midland	2930	14%	1	0	2635	13%	7	0	2817	13%	9	1
Pecos	923	12%	2	0	842	11%	9	2	885	11%	13	2
Presidio	46	0%	0	0	24	0%	0	0	38	0%	0	0
Reagan	14	0%	0	0	13	0%	0	0	16	0%	0	0
Reeves	165	0%	0	0	137	0%	0	0	181	0%	0	0
Schleicher	2	0%	0	0	0		0	0	3	0%	0	0
Sterling	1	0%	0	0	0		0	0	0		0	0
Sutton	20	0%	0	0	20	0%	0	0	22	0%	0	0
Terrell	6	0%	0	0	2	0%	0	0	6	0%	0	0
Tom Green	37	0%	0	0	1357	3%	15	4	1333	3%	7	2
Upton	110	9%	1	0	38	0%	0	0	107	11%	0	0
Ward	129	0%	0	0	684	49%	5	0	140	0%	0	0
Winkler	326	13%	1	1	290	9%	1	2	373	14%	2	4
Total	22361	6.2%	15	9	22772	6.9%	58	11	23857	5.6%	48	18

ILI by Age Group



This chart documents the number of ILI admissions in hospitals around the region by age group from syndromic surveillance data. It excludes ILI with a confirmed COVID-19 discharge diagnosis.

Flu-Associated Pediatric Deaths & Outbreaks

No flu-associated pediatric deaths have been reported in PHR 9/10 this flu season. In PHR 9/10, no flu outbreaks have been reported for Week 08.

For a more comprehensive look at respiratory illnesses circulating throughout Texas, please visit: <https://www.dshs.texas.gov/2022-2023-texas-influenza-surveillance-activity> and select the "Current Extended Flu Activity Report"