

**Weekly Flu Surveillance Report**  
**Public Health Region 9/10**  
**Week 45- November 7th- November 13th**



Texas Department of State Health Services

**Disclaimer**

Most cases of influenza are not reportable in the state of Texas, thus the data in this report was collected from hospitals, clinics, and schools throughout the region who have agreed to voluntarily submit data.

**Definitions**

**ILI:** Influenza-Like Illness. This is an illness that resembles the flu, but has not been confirmed. **Rapid:** These tests are typically done in-house to quickly test for influenza. **PCR:** These tests are generally more precise than rapid tests and are performed at the DSHS state lab and many commercial labs to confirm a case of influenza.

**Geographic Spread of Influenza in the Region**

No Activity	Sporadic	Local	<b>Regional</b>	Widespread
-------------	----------	-------	-----------------	------------

Geographic spread is determined using the CDC's guidelines for flu activity: <http://www.cdc.gov/flu/weekly/overview.htm>.

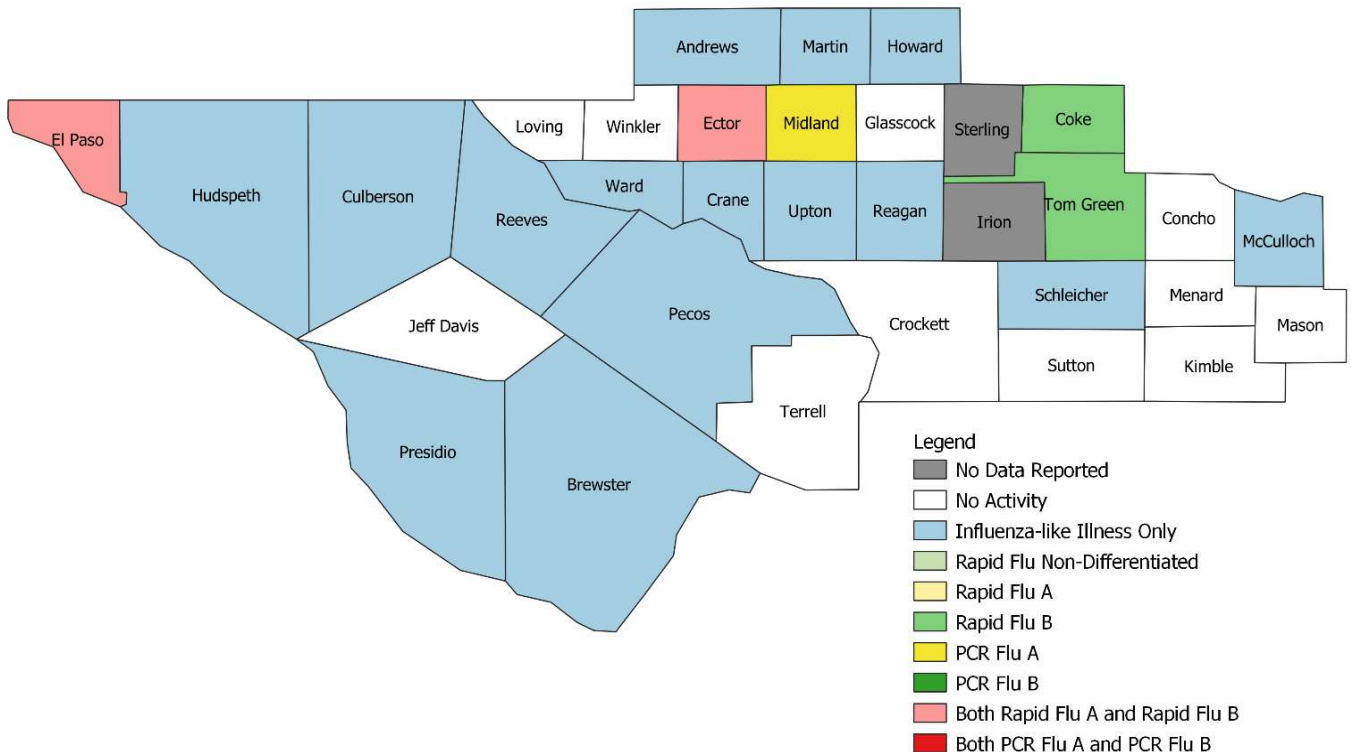
**Summary Data**

Condition	Week 45	Week 44	Week 43
Number of Counties Reporting (36 total)	↔ 34	34	35
Number of Counties Reporting ILI	↑ 18	17	20
Number of Counties Reporting High Levels of ILI*	↑ 8	3	6
Number of Counties Reporting Flu A	↓ 3	4	2
Number of Counties Reporting Flu B	↓ 4	5	2
Number of Counties Reporting Flu A & Flu B	↓ 2	3	2

The arrows represent changes from the previous week. A sideways arrow means there was no change in that condition.

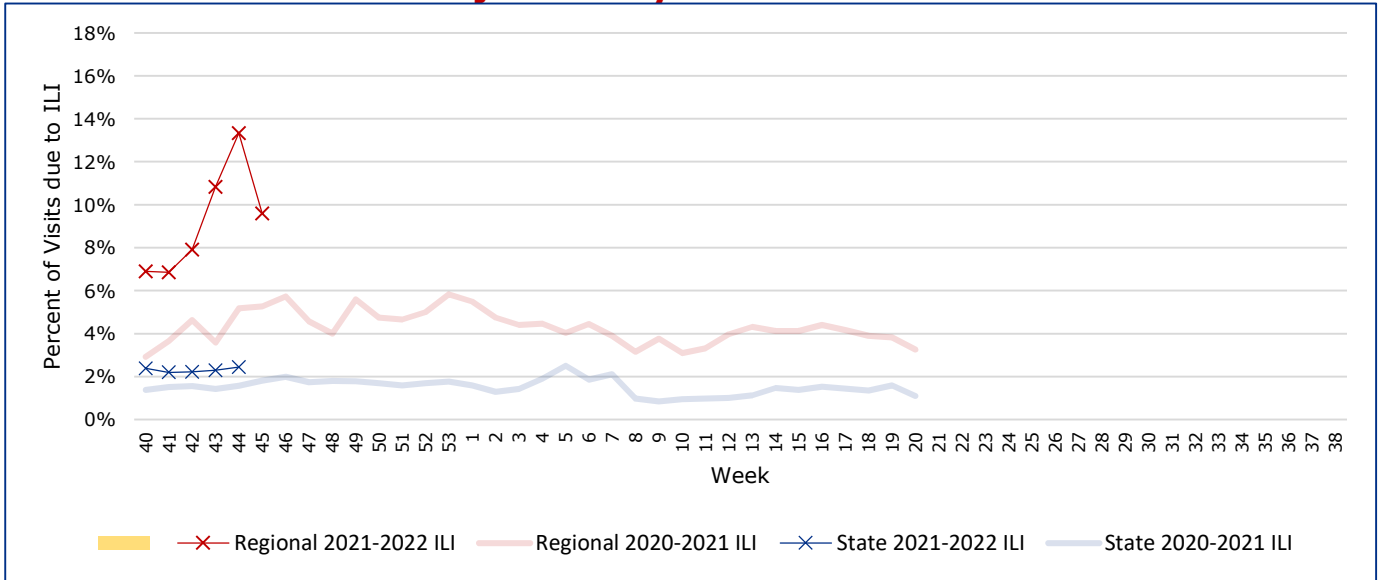
\*Counties with total percent of visits due to ILI above 4.0% for the week are considered to have high/abnormal levels.

**Map of Regional Flu Activity**



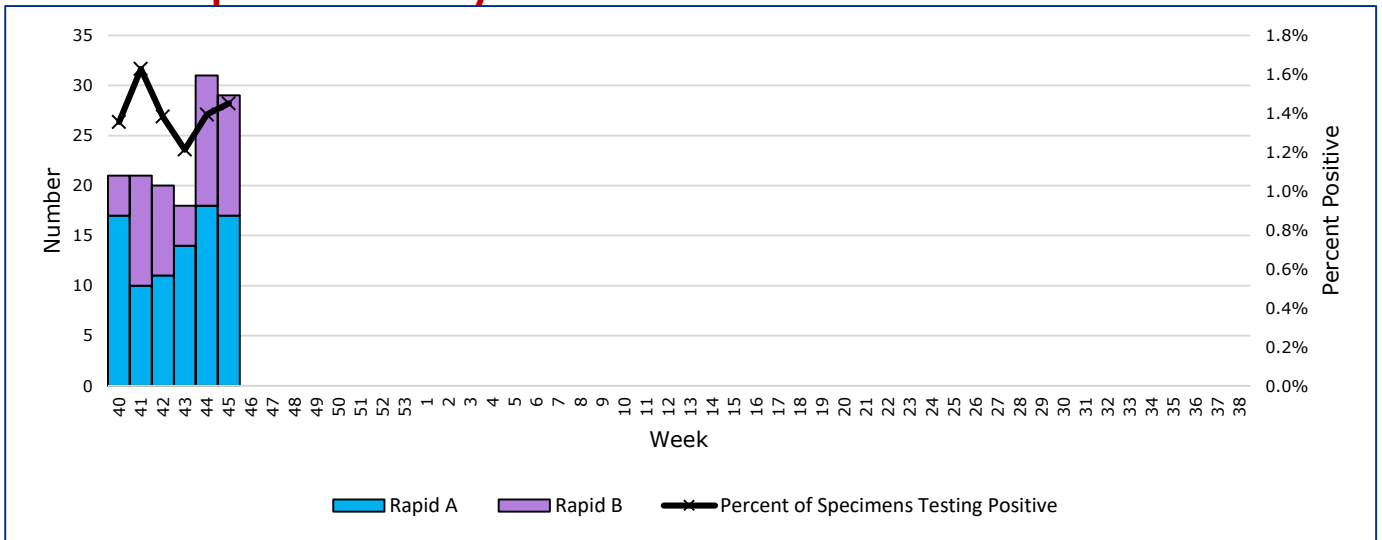
The map above depicts the previous week's reports of flu or influenza-like illness activity in each county. The legend on the bottom right of the map describes the meaning of each color.

## Influenza-Like Illness Projections by Week



This chart documents the percentage of patient visits that were due to ILI at hospitals and clinics around the region. It compares our region's data with the state's data and also compares to last flu season.

## Positive Rapid Flu Tests by Week



This chart documents the number of rapid tests that have come back positive for flu A and flu B each week throughout the region.

## Flu Data by County

County	Week 45				Week 44				Week 43			
	Patient Visits	% with ILI	Flu A	Flu B	Patient Visits	% with ILI	Flu A	Flu B	Patient Visits	% with ILI	Flu A	Flu B
Andrews	491	28%	0	0	903	30%	1	0	41	0%	0	0
Borden	2	0%	0	0	0		0	0	1	0%	0	0
Brewster	80	3%	0	0	101	3%	0	0	81	0%	0	0
Coke	6	0%	0	2	1	0%	0	0	2	0%	0	0
Concho	18	0%	0	0	19	0%	0	0	11	9%	0	0
Crane	29	3%	0	0	22	5%	0	0	44	2%	0	0
Crockett	7	0%	0	0	0		0	0	3	33%	0	0
Culberson	12	8%	0	0	8	0%	0	0	14	0%	0	0
Dawson	154	1%	0	0	124	1%	0	0	150	0%	0	0
Ector	4662	17%	13	1	4396	15%	16	1	4280	14%	13	3
El Paso	9084	4%	5	8	7957	3%	2	10	8045	3%	0	0
Gaines	122	3%	0	0	130	2%	0	0	114	3%	0	0
Glasscock	7	0%	0	0	4	0%	0	0	78	5%	0	0
Howard	377	2%	0	0	766	4%	0	0	753	3%	0	0
Hudspeth	24	8%	0	0	30	3%	0	0	23	0%	0	0
Irion	0		0	0	66	0%	0	0	1	0%	0	0
Jeff Davis	23	0%	0	0	12	0%	0	0	19	0%	0	0
Kimble	214	0%	0	0	181	0%	0	0	174	1%	0	0
Loving	1	0%	0	0	1	0%	0	0	1	0%	0	0
McCulloch	73	5%	0	0	78	3%	0	0	85	5%	0	0
Martin	44	5%	0	0	481	3%	0	0	490	2%	0	0
Mason	17	0%	0	0	20	0%	0	0	28	4%	0	0
Menard	18	0%	0	0	10	0%	0	0	18	0%	0	0
Midland	2628	16%	1	0	2747	14%	0	0	2831	10%	0	0
Pecos	127	6%	0	0	626	43%	0	0	639	42%	0	0
Presidio	154	12%	0	0	114	8%	0	0	137	1%	0	0
Reagan	22	9%	0	0	20	0%	0	0	26	0%	0	0
Reeves	174	7%	0	0	685	41%	0	0	640	43%	0	0
Schleicher	11	64%	0	0	19	37%	0	0	14	21%	0	0
Sterling	0		0	0	1	0%	0	0	0		0	0
Sutton	17	0%	0	0	15	0%	0	1	22	5%	0	0
Terrell	8	0%	0	0	6	0%	0	0	17	0%	0	0
Tom Green	1326	1%	0	1	1155	1%	0	1	1228	2%	1	1
Upton	135	33%	0	0	145	31%	0	1	132	21%	0	0
Ward	139	1%	0	0	603	45%	0	0	643	43%	0	0
Winkler	23	0%	0	0	841	40%	0	0	551	49%	0	0
<b>Total</b>	<b>20229</b>	<b>9.3%</b>	<b>19</b>	<b>12</b>	<b>22287</b>	<b>12.7%</b>	<b>19</b>	<b>14</b>	<b>21336</b>	<b>10.7%</b>	<b>14</b>	<b>4</b>

## Flu-Associated Pediatric Deaths & Outbreaks

No flu-associated pediatric deaths have been reported in PHR 9/10 this flu season. No flu outbreaks have been reported for Week 45.