

Weekly Flu Surveillance Report
Public Health Region 9/10
Week 44- October 31st- November 6th



Texas Department of State Health Services

Disclaimer

Most cases of influenza are not reportable in the state of Texas, thus the data in this report was collected from hospitals, clinics, and schools throughout the region who have agreed to voluntarily submit data.

Definitions

ILI: Influenza-Like Illness. This is an illness that resembles the flu, but has not been confirmed. **Rapid:** These tests are typically done in-house to quickly test for influenza. **PCR:** These tests are generally more precise than rapid tests and are performed at the DSHS state lab and many commercial labs to confirm a case of influenza.

Geographic Spread of Influenza in the Region

No Activity	Sporadic	Local	Regional	Widespread
-------------	----------	-------	-----------------	------------

Geographic spread is determined using the CDC's guidelines for flu activity: <http://www.cdc.gov/flu/weekly/overview.htm>.

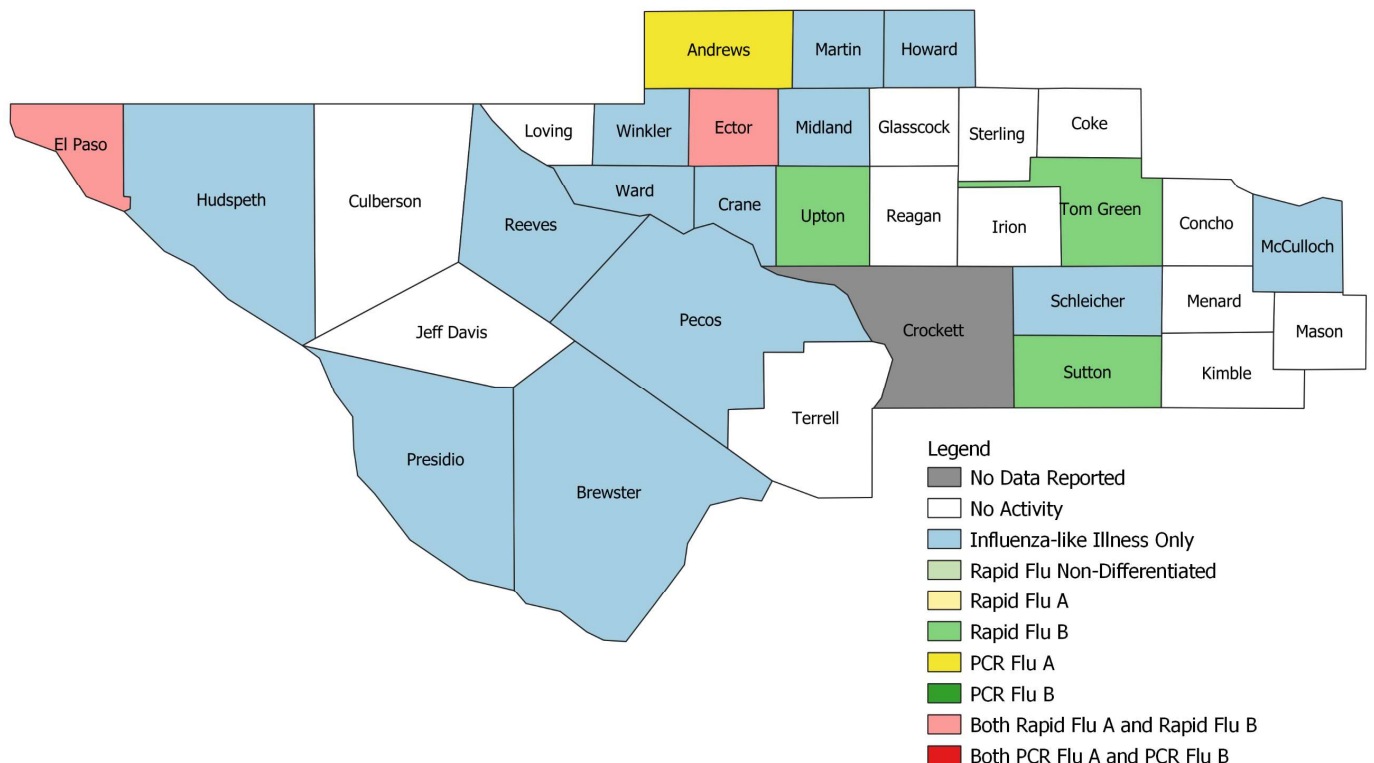
Summary Data

Condition	Week 44	Week 43	Week 42
Number of Counties Reporting (36 total)	↓ 34	35	35
Number of Counties Reporting ILI	↓ 17	20	15
Number of Counties Reporting High Levels of ILI*	↓ 3	6	3
Number of Counties Reporting Flu A	↑ 4	2	1
Number of Counties Reporting Flu B	↑ 5	2	4
Number of Counties Reporting Flu A & Flu B	↑ 3	2	1

The arrows represent changes from the previous week. A sideways arrow means there was no change in that condition.

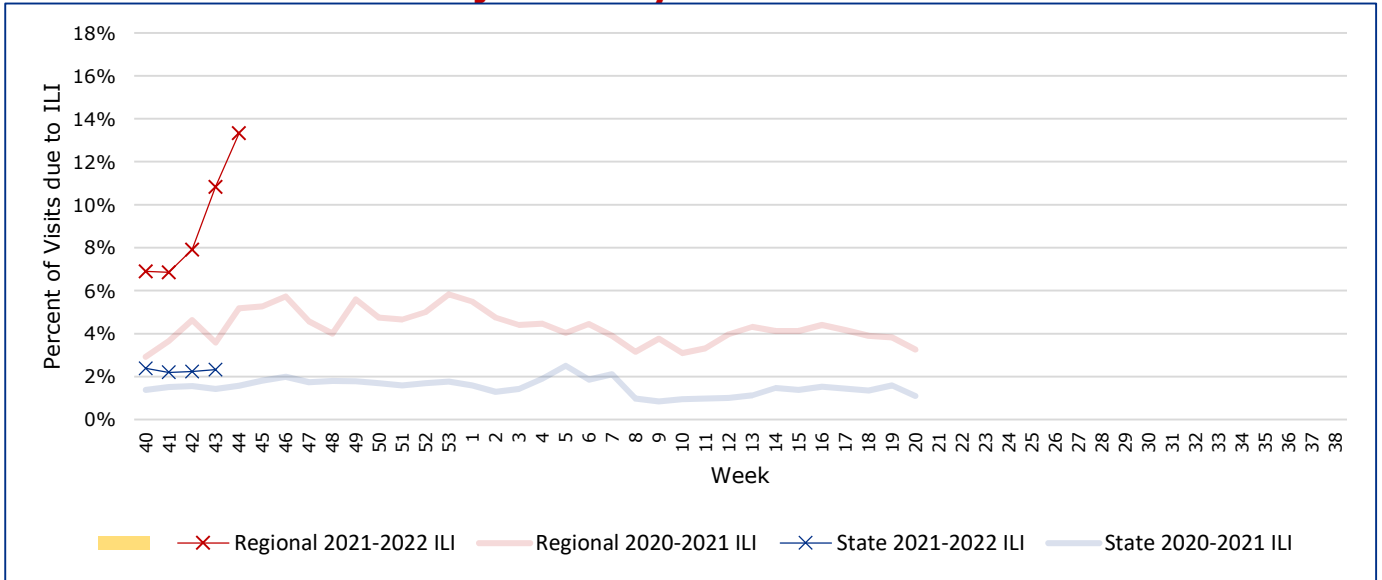
*Counties with total percent of visits due to ILI above 4.0% for the week are considered to have high/abnormal levels.

Map of Regional Flu Activity



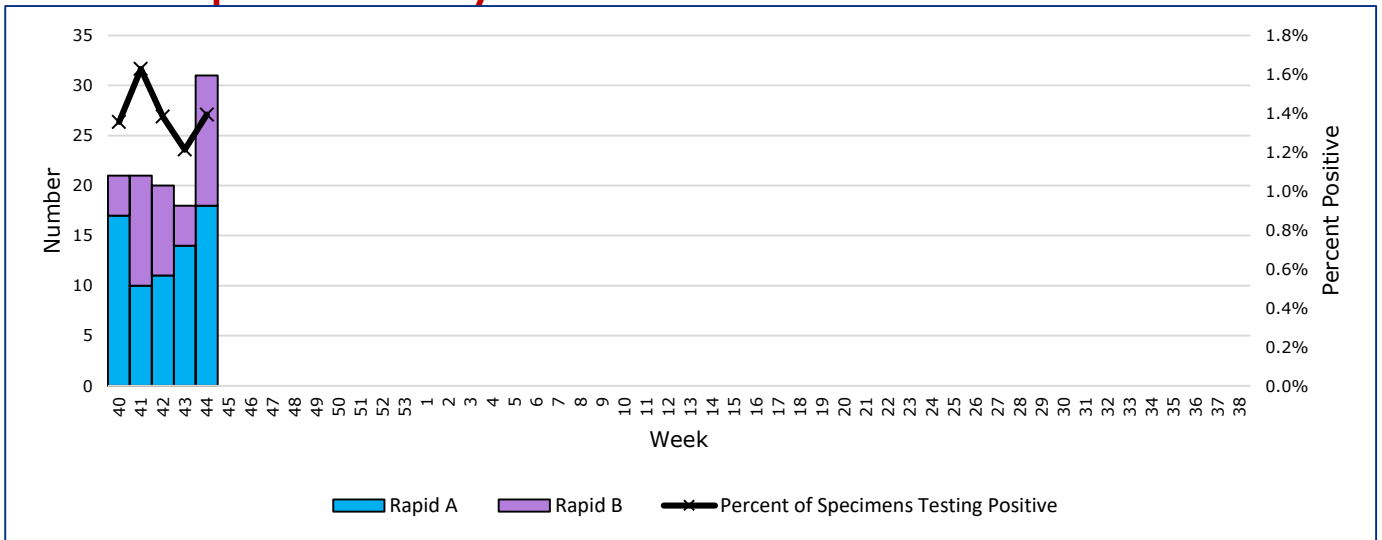
The map above depicts the previous week's reports of flu or influenza-like illness activity in each county. The legend on the bottom right of the map describes the meaning of each color.

Influenza-Like Illness Projections by Week



This chart documents the percentage of patient visits that were due to ILI at hospitals and clinics around the region. It compares our region's data with the state's data and also compares to last flu season.

Positive Rapid Flu Tests by Week



This chart documents the number of rapid tests that have come back positive for flu A and flu B each week throughout the region.

Flu Data by County

County	Week 44				Week 43				Week 42			
	Patient Visits	% with ILI	Flu A	Flu B	Patient Visits	% with ILI	Flu A	Flu B	Patient Visits	% with ILI	Flu A	Flu B
Andrews	903	30%	1	0	41	0%	0	0	469	32%	0	0
Borden	0		0	0	1	0%	0	0	5	0%	0	0
Brewster	101	3%	0	0	81	0%	0	0	81	0%	0	0
Coke	1	0%	0	0	2	0%	0	0	4	0%	0	0
Concho	19	0%	0	0	11	9%	0	0	32	0%	0	0
Crane	22	5%	0	0	44	2%	0	0	35	6%	0	0
Crockett	0		0	0	3	33%	0	0	5	0%	0	0
Culberson	8	0%	0	0	14	0%	0	0	11	0%	0	0
Dawson	124	1%	0	0	150	0%	0	0	152	1%	0	0
Ector	4396	15%	16	1	4280	14%	13	3	4385	14%	11	5
El Paso	7957	3%	2	10	8045	3%	0	0	7836	10%	0	3
Gaines	130	2%	0	0	114	3%	0	0	118	1%	0	0
Glasscock	4	0%	0	0	78	5%	0	0	3	0%	0	0
Howard	766	4%	0	0	753	3%	0	0	800	10%	0	0
Hudspeth	30	3%	0	0	23	0%	0	0	19	0%	0	0
Irion	66	0%	0	0	1	0%	0	0	1	0%	0	0
Jeff Davis	12	0%	0	0	19	0%	0	0	16	0%	0	0
Kimble	181	0%	0	0	174	1%	0	0	163	4%	0	0
Loving	1	0%	0	0	1	0%	0	0	0		0	0
McCulloch	78	3%	0	0	85	5%	0	0	12	0%	0	0
Martin	481	3%	0	0	490	2%	0	0	484	13%	0	0
Mason	20	0%	0	0	28	4%	0	0	28	0%	0	0
Menard	10	0%	0	0	18	0%	0	0	10	0%	0	0
Midland	2747	14%	0	0	2831	10%	0	0	2858	10%	0	0
Pecos	626	43%	0	0	639	42%	0	0	106	0%	0	0
Presidio	114	8%	0	0	137	8%	0	0	72	0%	0	0
Reagan	20	0%	0	0	26	0%	0	0	16	6%	0	0
Reeves	685	41%	0	0	640	43%	0	0	171	5%	0	0
Schleicher	19	37%	0	0	14	21%	0	0	9	11%	0	0
Sterling	1	0%	0	0	0		0	0	3	0%	0	0
Sutton	15	0%	0	1	22	5%	0	0	25	0%	0	0
Terrell	6	0%	0	0	17	0%	0	0	5	0%	0	0
Tom Green	1155	1%	0	1	1228	2%	1	1	1354	1%	0	1
Upton	145	31%	0	1	132	23%	0	0	148	28%	0	1
Ward	603	45%	0	0	643	43%	0	0	87	1%	0	0
Winkler	841	40%	0	0	551	49%	0	0	32	3%	0	0
Total	22287	12.7%	19	14	21336	10.7%	14	4	19555	10.5%	11	10

Flu-Associated Pediatric Deaths & Outbreaks

No flu-associated pediatric deaths have been reported in PHR 9/10 this flu season. No flu outbreaks have been reported for Week 44.