



# Weekly Flu Surveillance Report

Week 12 - March 17th - March 23rd, 2024

## Disclaimer

Most cases of influenza are not reportable in the state of Texas, thus the data in this report was collected from hospitals, clinics, and schools throughout the region who have agreed to voluntarily submit data.

## Definitions

**ILI:** Influenza-Like Illness. This is an illness that resembles the flu, but has not been confirmed. **Rapid:** These tests are typically done in-house to quickly test for influenza. **PCR:** These tests are generally more precise than rapid tests and are performed at the DSHS state lab and many commercial labs to confirm a case of influenza.

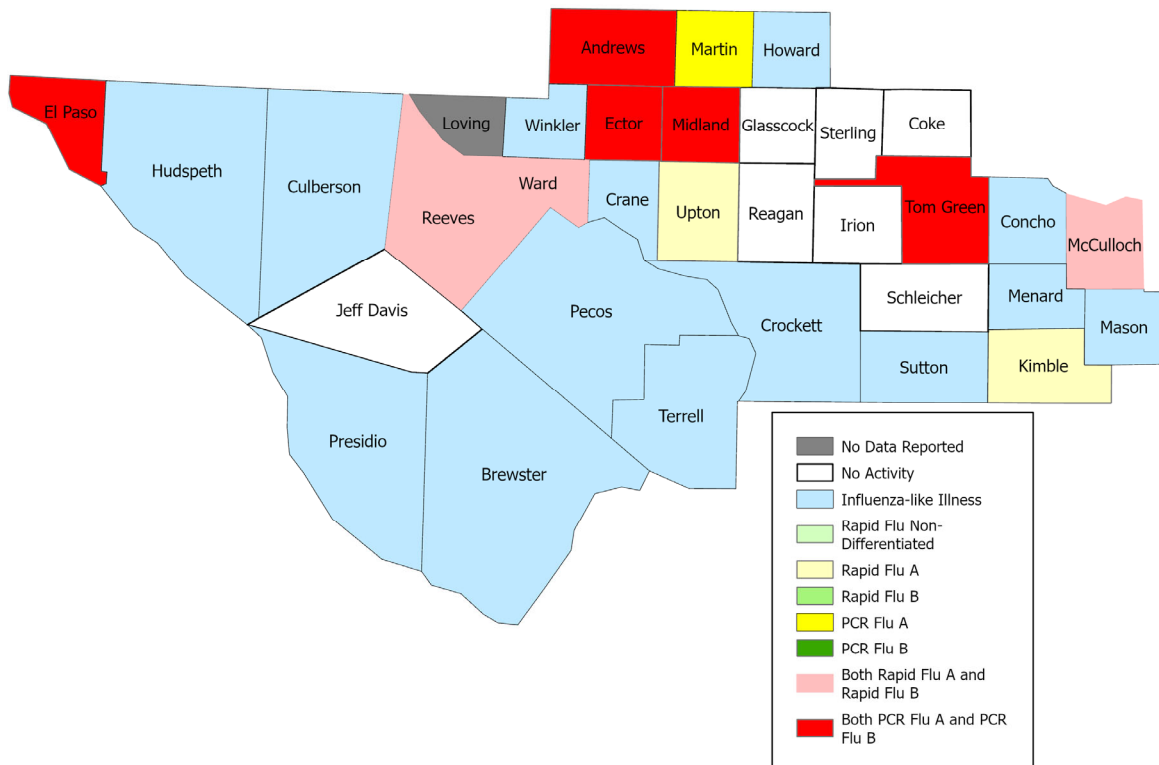
## Summary Data

Condition	Week 12	Week 11	Week 10
Number of Counties Reporting (36 total)	↑ 35	34	35
Number of Counties Reporting ILI	↑ 20	18	17
Number of Counties Reporting High Levels of ILI*	↑ 5	4	7
Number of Counties Reporting Flu A	↑ 11	8	8
Number of Counties Reporting Flu B	→ 8	8	10
Number of Counties Reporting Flu A & Flu B	↑ 8	7	8

The arrows represent changes from the previous week. A sideways arrow means there was no change in that condition.

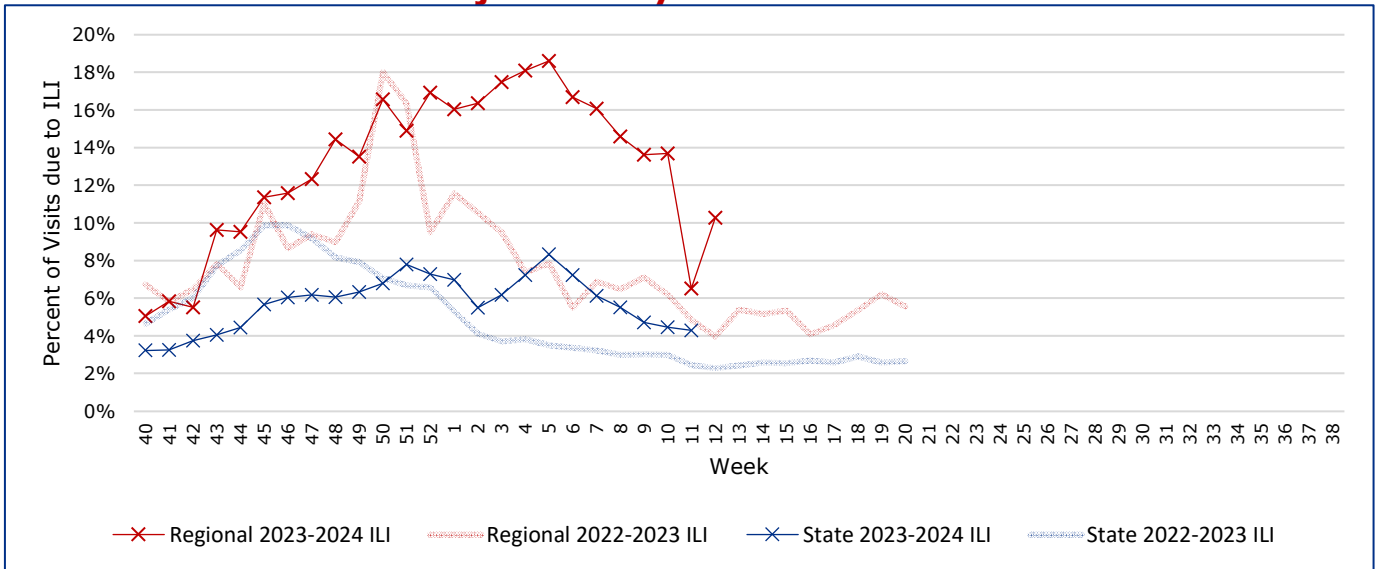
\*Counties with total percent of visits due to ILI above 4.0% for the week are considered to have high/abnormal levels.

## Map of Regional Flu Activity



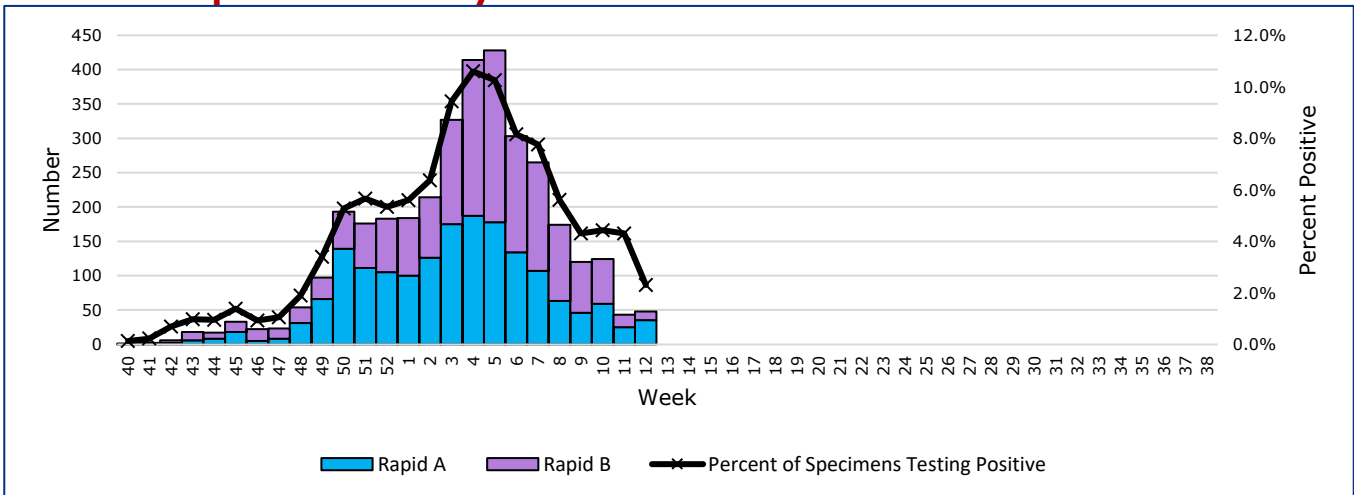
The map above depicts the previous week's reports of flu or influenza-like illness activity in each county. The legend on the bottom right of the map describes the meaning of each color.

## Influenza-Like Illness Projections by Week



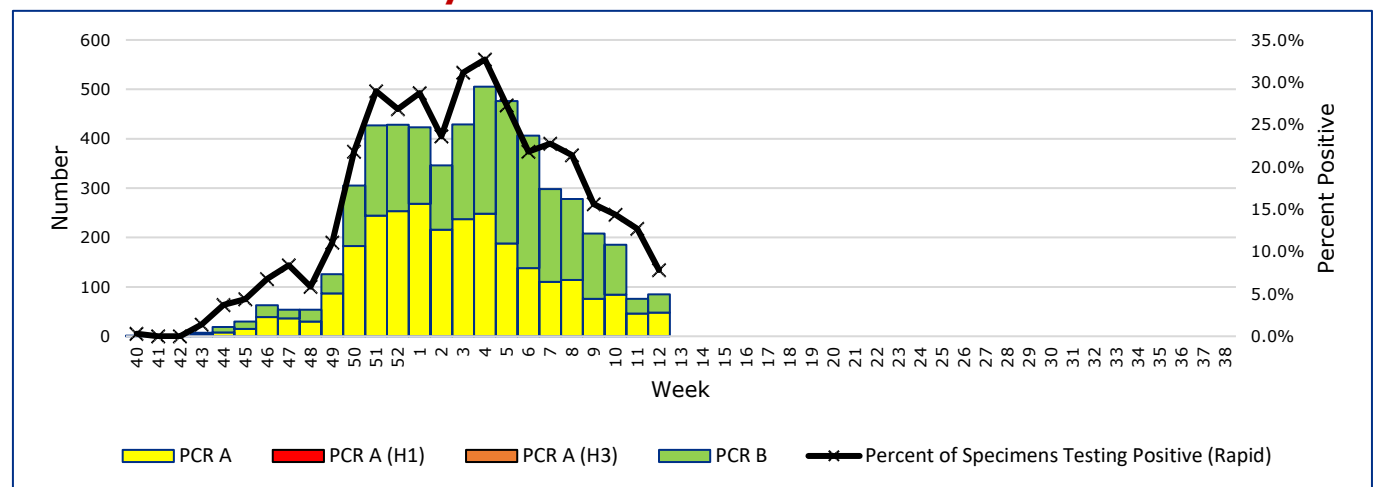
This chart documents the percentage of patient visits that were due to ILI at hospitals and clinics around the region, excluding confirmed COVID cases. It compares our region's data with the state's data and also compares to last flu season.

## Positive Rapid Flu Tests by Week



This chart documents the number of rapid tests that have come back positive for flu A and flu B each week throughout the region.

## Positive PCR Flu Tests by Week



This chart documents the number of PCR tests that have come back positive for flu A and flu B each week throughout the region.

## Flu Data by County

County	Week 12				Week 11				Week 10			
	Patient Visits	% with ILI	Flu A	Flu B	Patient Visits	% with ILI	Flu A	Flu B	Patient Visits	% with ILI	Flu A	Flu B
Andrews	639	7%	2	4	610	11%	2	4	684	12%	4	13
Borden	1	0%	0	0	1	0%	0	0	0		0	0
Brewster	100	0%	0	0	85	0%	0	0	80	0%	0	0
Coke	8	0%	0	0	7	0%	0	0	2	0%	0	0
Concho	16	0%	0	0	22	0%	0	0	22	0%	0	0
Crane	35	0%	0	0	42	0%	0	0	43	0%	0	0
Crockett	6	0%	0	0	9	0%	0	0	15	0%	0	0
Culberson	4	0%	0	0	8	0%	0	0	3	0%	0	0
Dawson	150	0%	0	0	156	0%	0	0	155	0%	0	0
Ector	5366	21%	35	19	2156	7%	8	7	5816	29%	56	69
El Paso	7382	1%	3	4	7447	1%	0	5	7427	1%	1	12
Gaines	159	0%	0	0	147	0%	0	0	150	0%	0	0
Glasscock	4	0%	0	0	7	0%	0	0	6	0%	0	0
Howard	534	4%	0	0	352	0%	0	0	590	4%	4	2
Hudspeth	14	0%	0	0	14	0%	0	0	22	0%	0	0
Irion	2	0%	0	0	1	0%	0	0	2	0%	0	0
Jeff Davis	13	0%	0	0	13	0%	0	0	21	0%	0	0
Kimble	119	4%	1	0	116	2%	0	0	121	1%	0	0
Loving	0		0	0	0		0	0	2	0%	0	0
McCulloch	68	74%	1	3	63	76%	1	3	73	88%	7	3
Martin	149	7%	1	0	67	0%	0	0	165	8%	0	5
Mason	33	0%	0	0	33	0%	0	0	35	0%	0	0
Menard	15	0%	0	0	6	0%	0	0	5	0%	0	0
Midland	2874	12%	12	14	2676	13%	32	12	3168	16%	33	33
Pecos	120	0%	0	0	140	0%	0	0	135	0%	0	0
Presidio	26	0%	0	0	139	24%	0	0	37	0%	0	0
Reagan	21	0%	0	0	10	0%	0	0	22	0%	0	0
Reeves	990	7%	1	1	923	7%	6	5	199	0%	0	0
Schleicher	2	0%	0	0	0		0	0	1	0%	0	0
Sterling	2	0%	0	0	2	0%	0	0	2	0%	0	0
Sutton	13	0%	0	0	28	0%	0	0	21	0%	0	0
Terrell	6	0%	0	0	1	0%	0	0	5	0%	0	0
Tom Green	1413	1%	12	3	1354	2%	10	10	1390	2%	15	17
Upton	124	12%	1	0	94	15%	1	0	144	22%	0	6
Ward	749	44%	14	2	568	49%	11	2	832	42%	23	6
Winkler	81	0%	0	0	82	0%	0	0	90	0%	0	0
<b>Total</b>	<b>21238</b>	<b>10.1%</b>	<b>83</b>	<b>50</b>	<b>17379</b>	<b>6.3%</b>	<b>71</b>	<b>48</b>	<b>21485</b>	<b>13.4%</b>	<b>143</b>	<b>166</b>

## **Flu-Associated Pediatric Deaths & Outbreaks**

No flu-associated pediatric deaths have been reported in PHR 9/10 this flu season. In PHR 9/10, no flu outbreaks have been reported for Week 12.

**For a more comprehensive look at respiratory illnesses circulating throughout Texas, please visit: <https://www.dshs.texas.gov/texas-respiratory-virus-surveillance-report> and select the "Current Texas Respiratory Virus Surveillance Report"**