



Weekly Flu Surveillance Report

Week 09 - February 25th - March 2nd, 2024

Disclaimer

Most cases of influenza are not reportable in the state of Texas, thus the data in this report was collected from hospitals, clinics, and schools throughout the region who have agreed to voluntarily submit data.

Definitions

ILI: Influenza-Like Illness. This is an illness that resembles the flu, but has not been confirmed. **Rapid:** These tests are typically done in-house to quickly test for influenza. **PCR:** These tests are generally more precise than rapid tests and are performed at the DSHS state lab and many commercial labs to confirm a case of influenza.

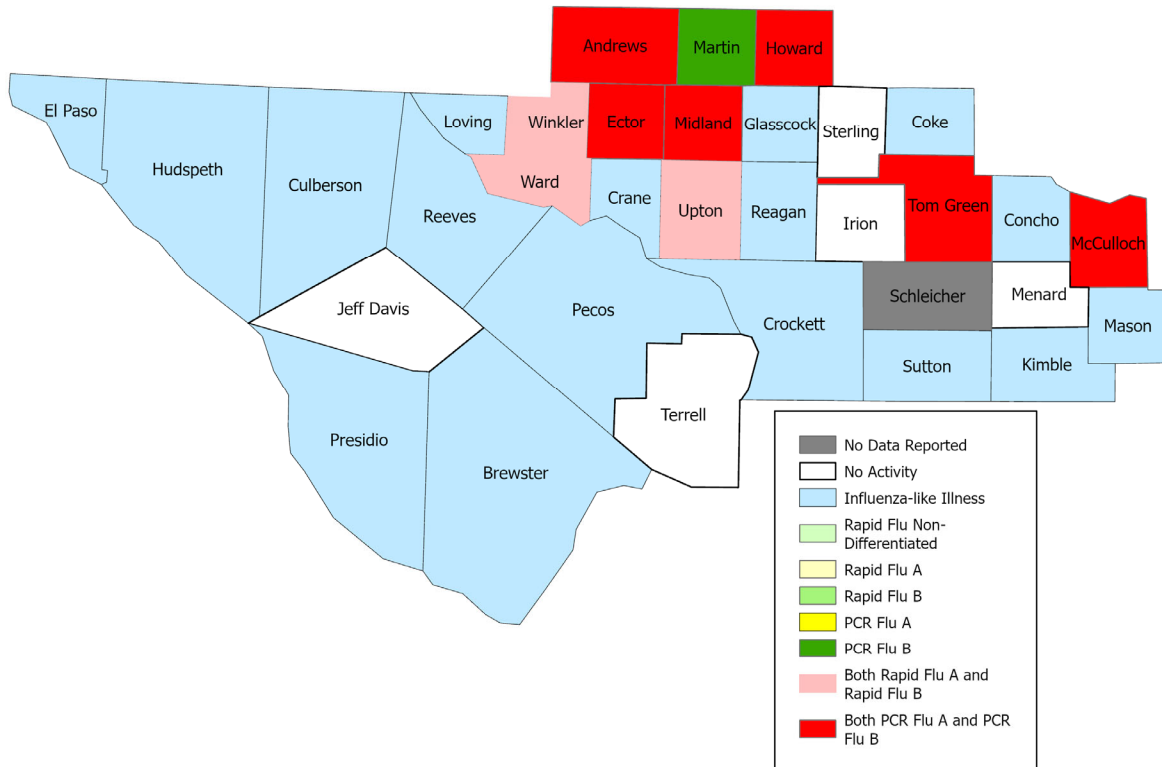
Summary Data

Condition	Week 09	Week 08	Week 07
Number of Counties Reporting (36 total)	→ 35	35	35
Number of Counties Reporting ILI	↑ 22	19	22
Number of Counties Reporting High Levels of ILI*	→ 10	10	10
Number of Counties Reporting Flu A	↓ 9	10	12
Number of Counties Reporting Flu B	↓ 10	11	12
Number of Counties Reporting Flu A & Flu B	↓ 9	10	12

The arrows represent changes from the previous week. A sideways arrow means there was no change in that condition.

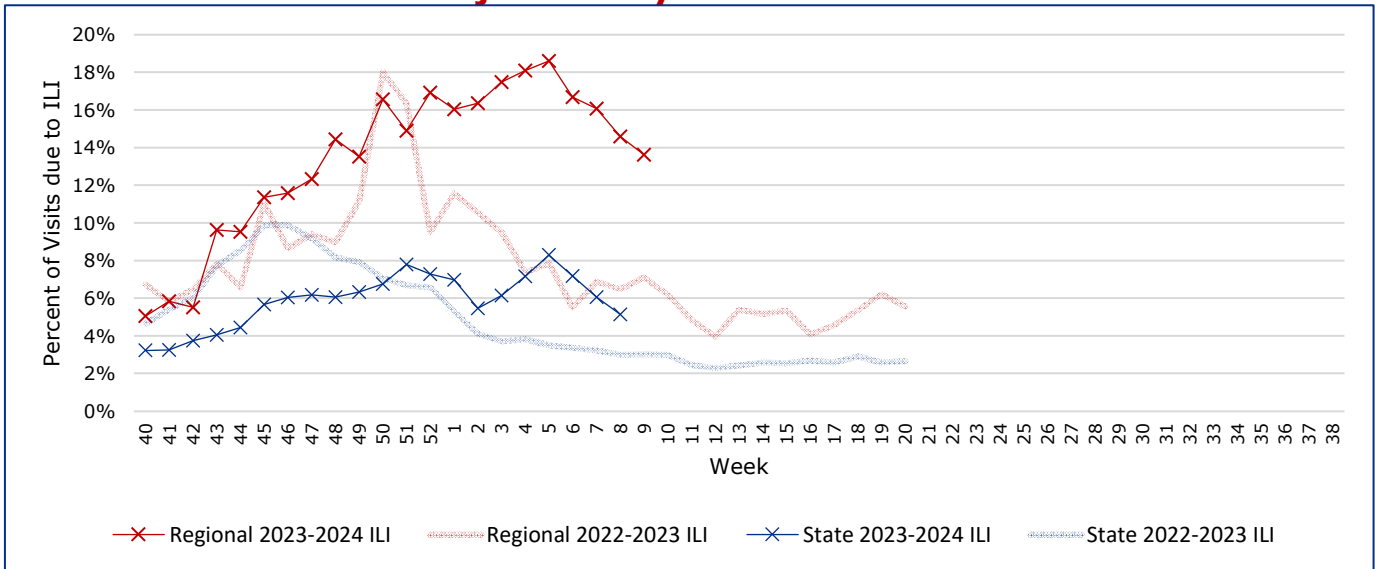
*Counties with total percent of visits due to ILI above 4.0% for the week are considered to have high/abnormal levels.

Map of Regional Flu Activity



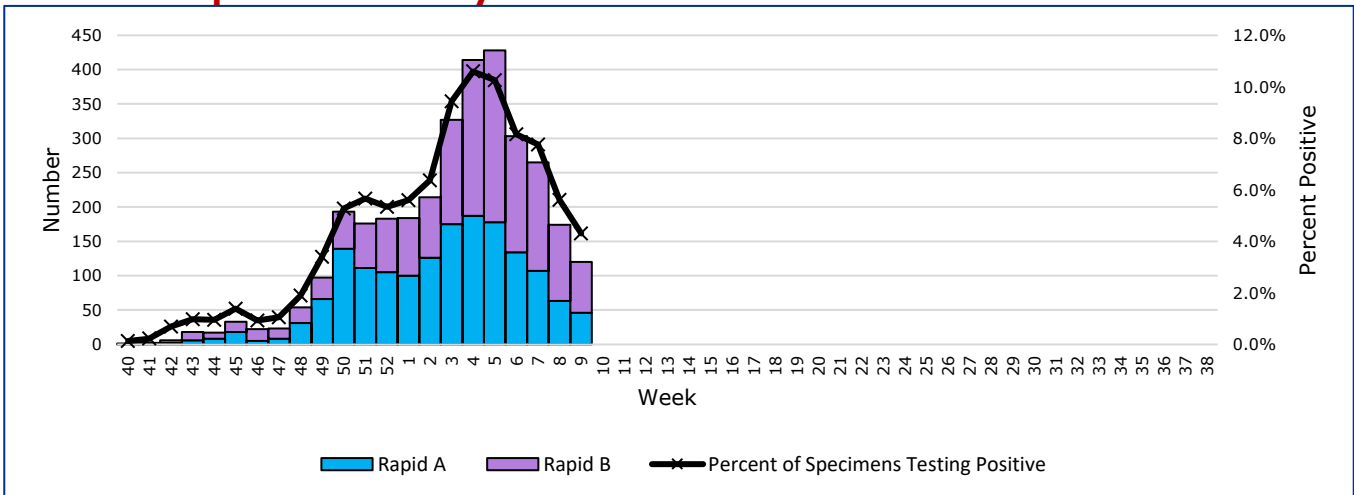
The map above depicts the previous week's reports of flu or influenza-like illness activity in each county. The legend on the bottom right of the map describes the meaning of each color.

Influenza-Like Illness Projections by Week



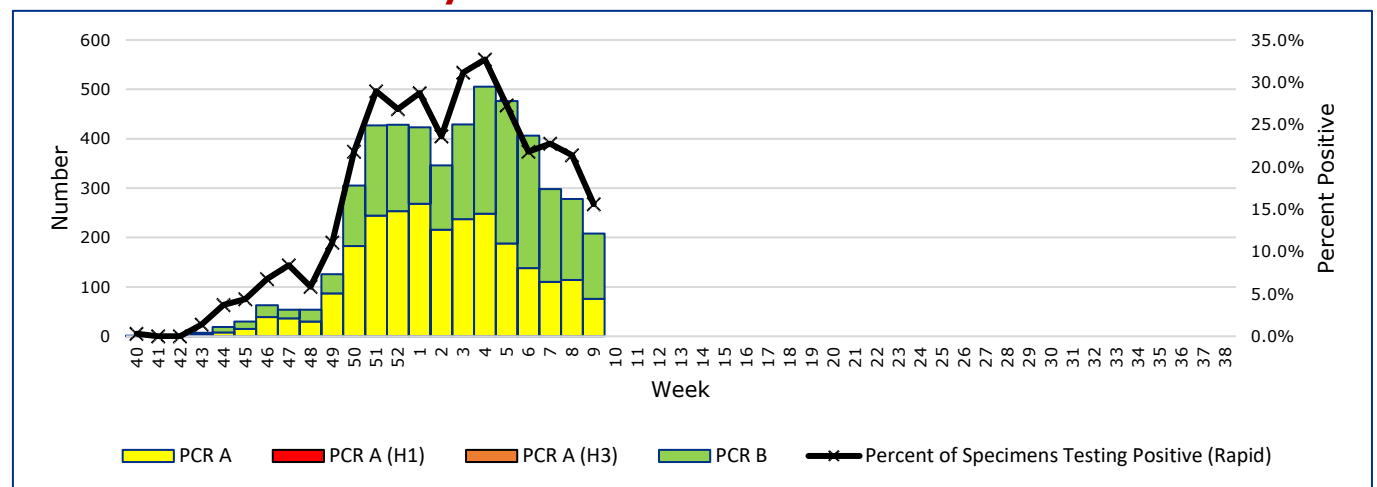
This chart documents the percentage of patient visits that were due to ILI at hospitals and clinics around the region, excluding confirmed COVID cases. It compares our region's data with the state's data and also compares to last flu season.

Positive Rapid Flu Tests by Week



This chart documents the number of rapid tests that have come back positive for flu A and flu B each week throughout the region.

Positive PCR Flu Tests by Week



This chart documents the number of PCR tests that have come back positive for flu A and flu B each week throughout the region.

Flu Data by County

County	Week 09				Week 08				Week 07			
	Patient Visits	% with ILI	Flu A	Flu B	Patient Visits	% with ILI	Flu A	Flu B	Patient Visits	% with ILI	Flu A	Flu B
Andrews	707	13%	4	11	723	17%	8	14	670	11%	5	9
Borden	1	0%	0	0	2	0%	0	0	2	0%	0	0
Brewster	88	0%	0	0	85	0%	0	0	97	0%	0	0
Coke	7	0%	0	0	4	0%	0	0	5	0%	0	0
Concho	15	0%	0	0	25	0%	0	0	16	0%	0	0
Crane	32	0%	0	0	32	0%	0	0	41	0%	0	0
Crockett	15	0%	0	0	17	0%	0	0	7	0%	0	0
Culberson	4	0%	0	0	10	0%	0	0	8	0%	0	0
Dawson	145	0%	0	0	156	0%	0	0	144	0%	0	0
Ector	5839	31%	44	93	6129	32%	60	129	5632	35%	62	145
El Paso	7415	0%	0	0	7624	0%	0	0	7168	0%	0	0
Gaines	134	0%	0	0	141	0%	0	0	157	0%	0	0
Glasscock	13	8%	0	0	27	11%	0	0	2	0%	0	0
Howard	575	3%	2	3	617	5%	0	1	601	6%	4	3
Hudspeth	22	0%	0	0	20	0%	0	0	21	0%	0	0
Irion	1	0%	0	0	1	0%	0	0	0		0	0
Jeff Davis	14	0%	0	0	16	0%	0	0	17	0%	0	0
Kimble	128	5%	0	0	140	6%	1	1	149	8%	2	1
Loving	3	0%	0	0	2	0%	0	0	1	0%	0	0
McCulloch	91	82%	3	8	99	84%	5	6	116	81%	7	3
Martin	233	8%	0	1	193	9%	3	1	188	11%	2	4
Mason	51	0%	0	0	41	0%	0	0	30	0%	0	0
Menard	9	0%	0	0	13	0%	0	0	8	0%	0	0
Midland	3088	15%	32	41	3156	17%	44	73	3025	18%	43	78
Pecos	166	0%	0	0	158	0%	0	0	864	18%	30	43
Presidio	31	0%	0	0	228	7%	0	0	92	2%	0	0
Reagan	25	0%	0	0	20	0%	0	0	10	0%	0	0
Reeves	198	0%	0	0	214	0%	0	0	181	0%	0	0
Schleicher	0		0	0	3	0%	0	0	2	0%	0	0
Sterling	2	0%	0	0	0		0	0	1	0%	0	0
Sutton	19	0%	0	0	14	0%	0	0	20	0%	0	0
Terrell	8	0%	0	0	3	0%	0	0	3	0%	0	0
Tom Green	1408	2%	15	30	1473	3%	32	27	1461	3%	27	38
Upton	120	18%	1	1	151	17%	2	9	189	30%	8	6
Ward	623	39%	11	14	743	42%	10	9	733	48%	11	6
Winkler	417	25%	10	4	443	23%	12	5	524	27%	16	10
Total	21647	13.6%	122	206	22723	14.6%	177	275	22185	16.1%	217	346

Flu-Associated Pediatric Deaths & Outbreaks

No flu-associated pediatric deaths have been reported in PHR 9/10 this flu season. In PHR 9/10, no flu outbreaks have been reported for Week 09.

For a more comprehensive look at respiratory illnesses circulating throughout Texas, please visit: <https://www.dshs.texas.gov/texas-respiratory-virus-surveillance-report> and select the "Current Texas Respiratory Virus Surveillance Report"