



**2024 DSHS Arbovirus Activity Report
Week #19 (ending May 11, 2024)
Report Date: May 15, 2024**

Table 1. 2024 Arbovirus Activity Summary, Texas, Week 19

Arbovirus	Mosquito Pools	Avian	Veterinary	Sentinel Chicken	Human					
					Febrile Illness	Neurologic Illness	Severe Dengue	TOTAL (HUMAN)	Deaths	PVD ²
California Serogroup ¹								0		
Chikungunya								0		
Dengue								0		
Eastern Equine Encephalitis								0		
St. Louis Encephalitis								0		
West Nile	4							0		
Zika								0		
TOTAL REPORTS	4	0	0	0	0	0	0	0	0	0

¹California Serogroup includes California encephalitis, Jamestown Canyon, Keystone, La Crosse, snowshoe hare, and trivittatus viruses.

²PVD - Presumptive viremic blood donors are people who had no symptoms at the time of donating blood through a blood collection agency, but whose blood tested positive when screened for the presence of West Nile virus or Zika virus. Unless they meet the case reporting criteria, they are not counted as a case for official reporting purposes and are not included in the "Total (HUMAN)" column.

Note: Human mortality from arboviral conditions is aggregated and reported monthly once documentation has been received and verified.

For more detailed information about West Nile virus, including past weekly and annual reports, please visit <https://www.dshs.texas.gov/mosquito-borne-diseases/dshs-arbovirus-weekly-activity-reports>

For more detailed information about Zika, please visit <http://www.texaszika.org/>

Table 3. 2024 Other Arbovirus Activity by County†, Week 19

County	CAL		EEEV				SLEV			WNV								
	M	H	M	V	SC	H	M	SC	H	M	A	V	SC	H				
														WNF	WNND	PVD‡	TOTAL	
Midland										1								0
Montgomery										3								0
Total Number of Reports	0	0	0	0	0	0	0	0	0	4	0	0	0	0	0	0	0	0

M - mosquito A-avian V-veterinary SC- sentinel chicken H- human WNF - West Nile Fever WNND - West Nile Neuroinvasive Disease

CAL - California Serogroup Viruses

EEEV - Eastern Equine Encephalitis Virus

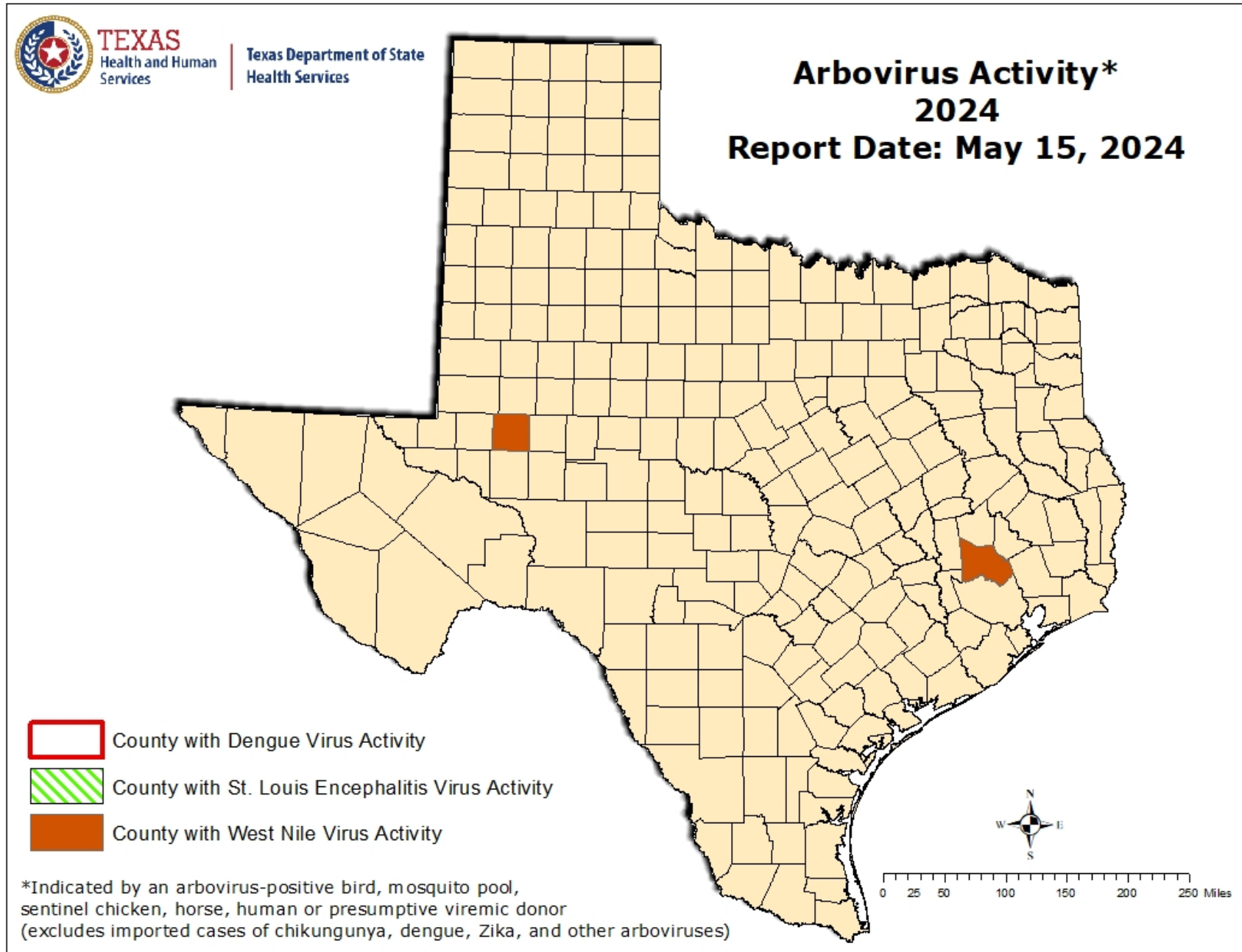
SLEV - St. Louis Encephalitis Virus

WNV - West Nile Virus

†County level data is not reported for conditions with <5 cases reported in a year.

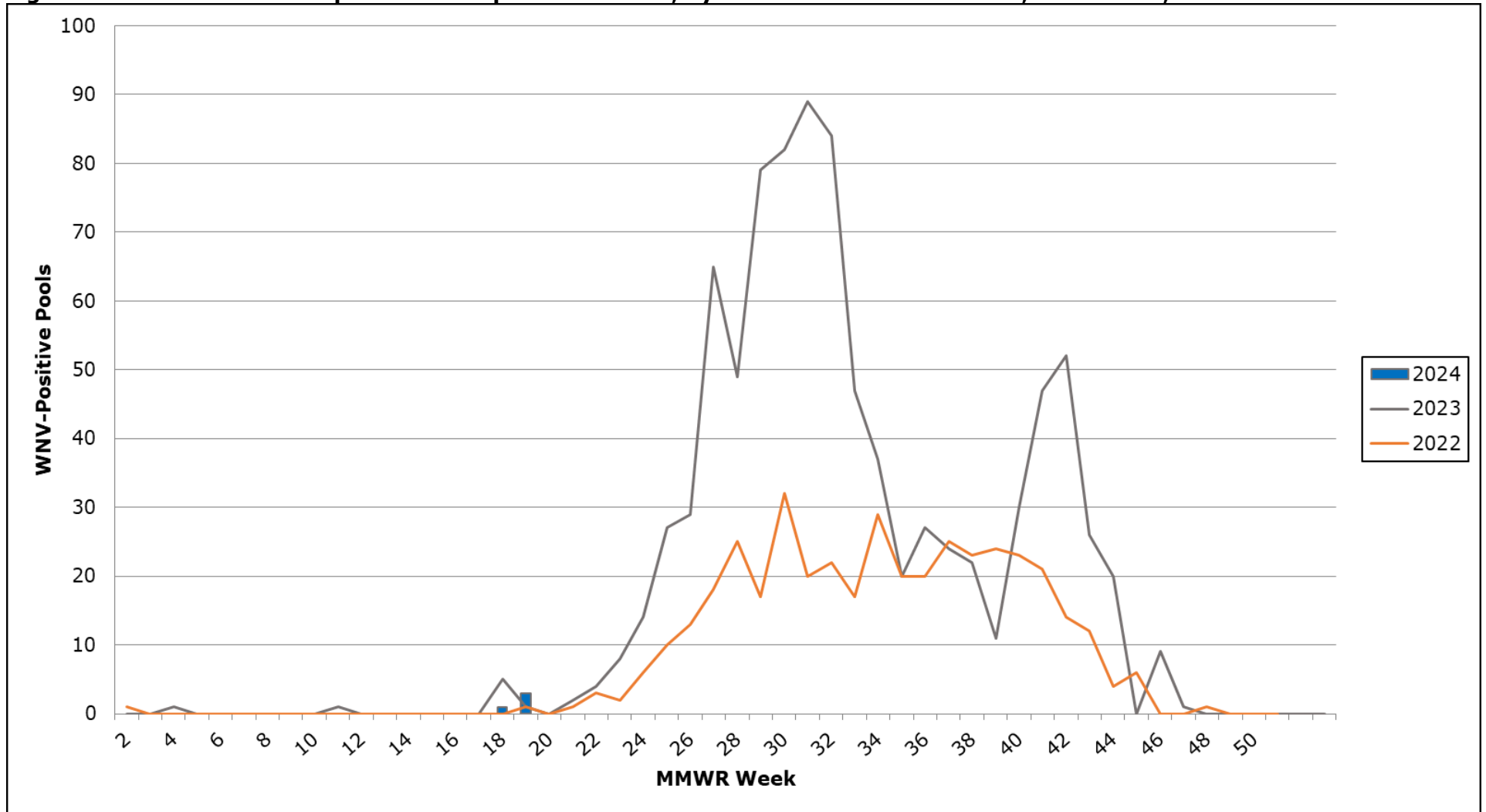
‡PVDs are not included in the "Total" column.

Figure 1. Texas Counties Reporting Arbovirus Activity, Week 19



Please note that arbovirus weekly reports are weekly snapshots of preliminary DSHS data and may change at any time due to data quality assurance procedures. The final weekly report of each year does not represent the complete data for that year and should not be used to draw conclusions regarding year to year activity. Please refer to our annual summary reports for finalized, complete data or contact wrv@dshs.texas.gov to request additional data or with any questions.

Figure 2. WNV-Positive Mosquito Pools Reported in Texas, by MMWR Week of Collection, 2022-2024, Week 19



Please note that arbovirus weekly reports are weekly snapshots of preliminary DSHS data and may change at any time due to data quality assurance procedures. The final weekly report of each year does not represent the complete data for that year and should not be used to draw conclusions regarding year to year activity. Please refer to our annual summary reports for finalized, complete data or contact wrv@dshs.texas.gov to request additional data or with any questions.