



TEXAS
Health and Human
Services

Texas Department of State
Health Services

Respiratory Viruses Update

**Influenza and Respiratory Syncytial
Virus**

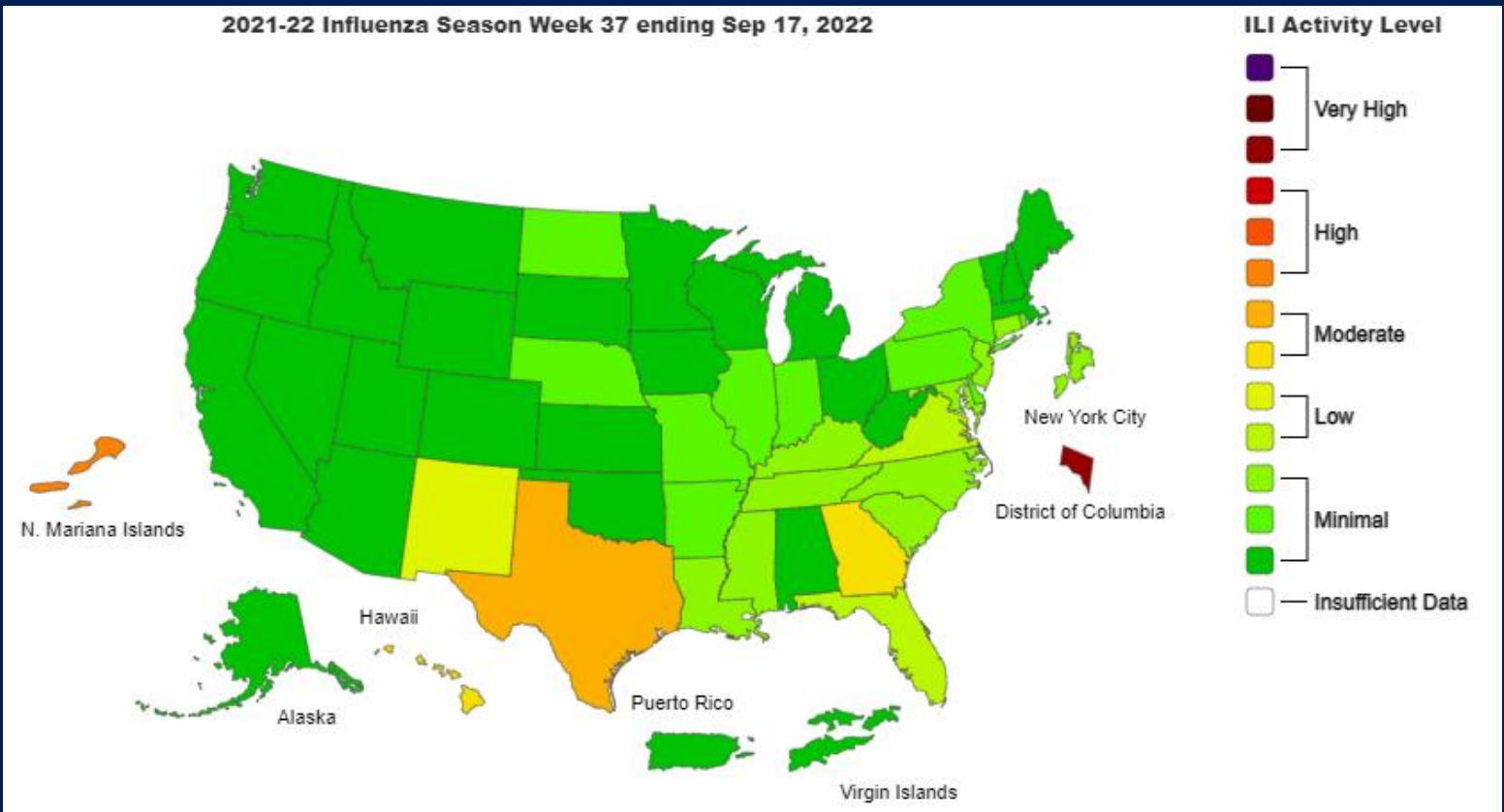
DISCLAIMER

The information presented today was last updated on September 29th, 2022 and has changed. Influenza surveillance lags by one week and as such the data presented today includes the entire season up to the week ending September 17th, 2022 (MMWR 37).

Influenza is not considered a reportable condition in the State of Texas, as such the data is obtained in aggregate by voluntary outpatient syndromic surveillance sites throughout the State.

National Outpatient Influenza Like Illness

2021-22 Influenza Season Week 37 ending Sep 17, 2022



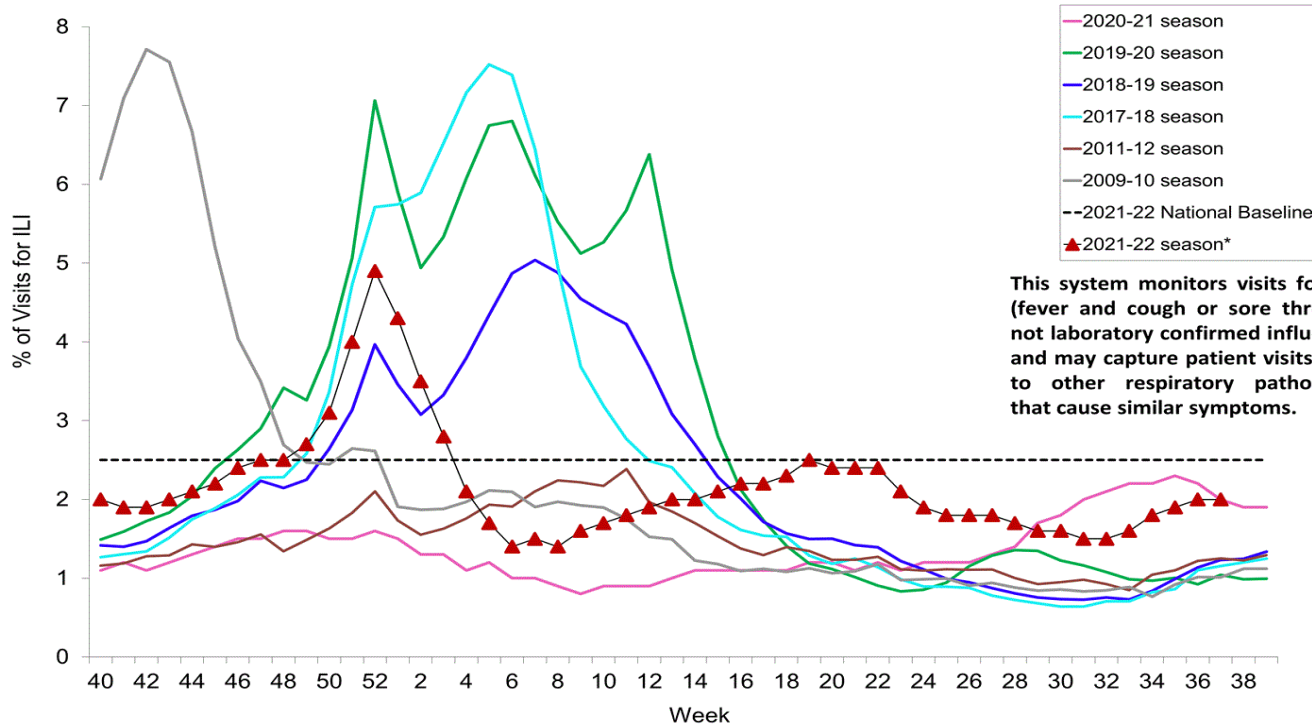
TEXAS

Health and Human Services

Texas Department of State
Health Services

National Outpatient Influenza Like Illness Trend

Percentage of Outpatient Visits for Respiratory Illness Reported By The U.S. Outpatient Influenza-like Illness Surveillance Network (ILINet), Weekly National Summary, 2021-2022* and Selected Previous Seasons



This system monitors visits for ILI (fever and cough or sore throat), not laboratory confirmed influenza and may capture patient visits due to other respiratory pathogens that cause similar symptoms.



TEXAS

Health and Human Services

Texas Department of State Health Services

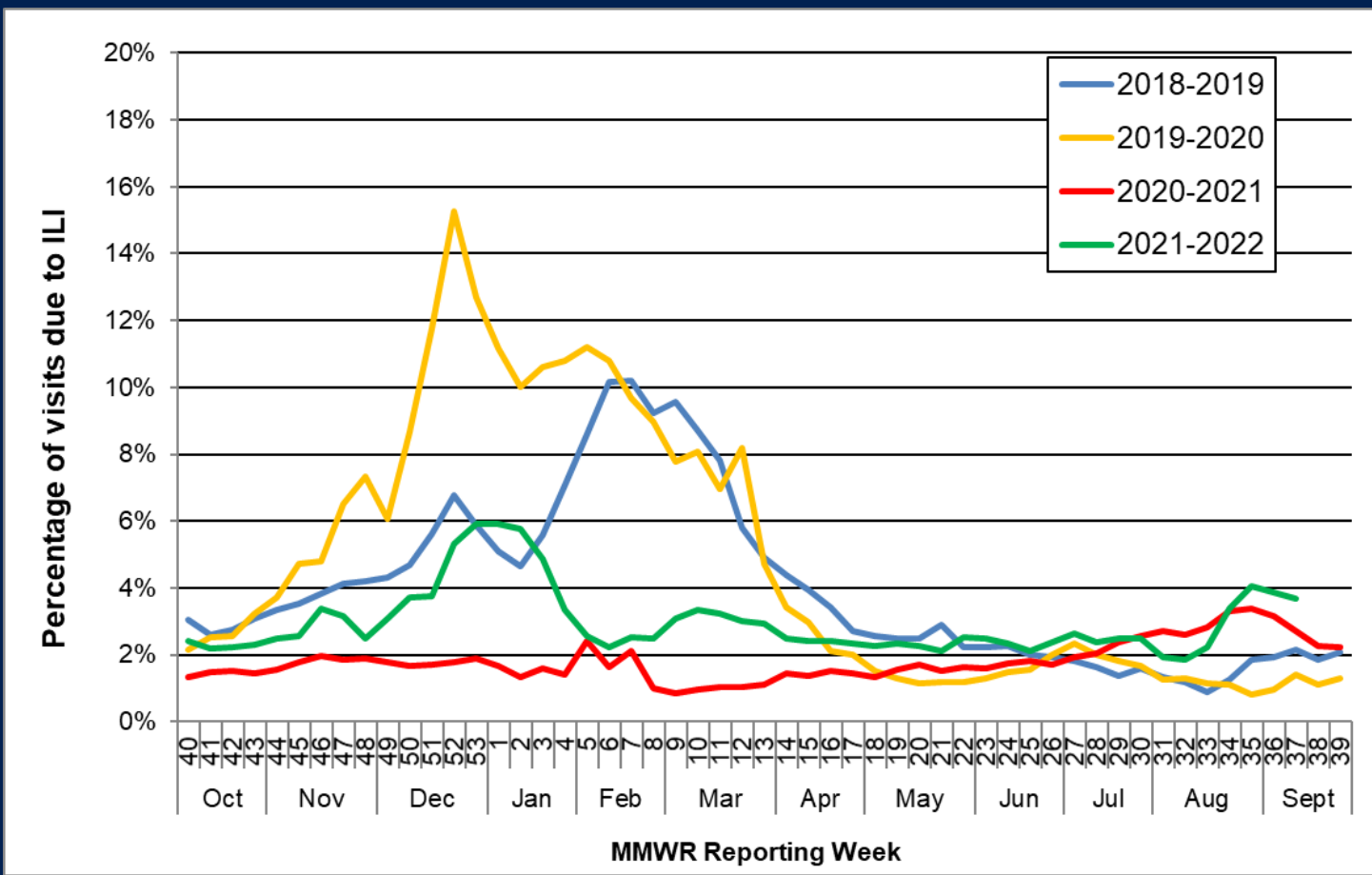


TEXAS

Health and Human Services

Texas Department of State
Health Services

Texas Outpatient Influenza Like Illness Trend



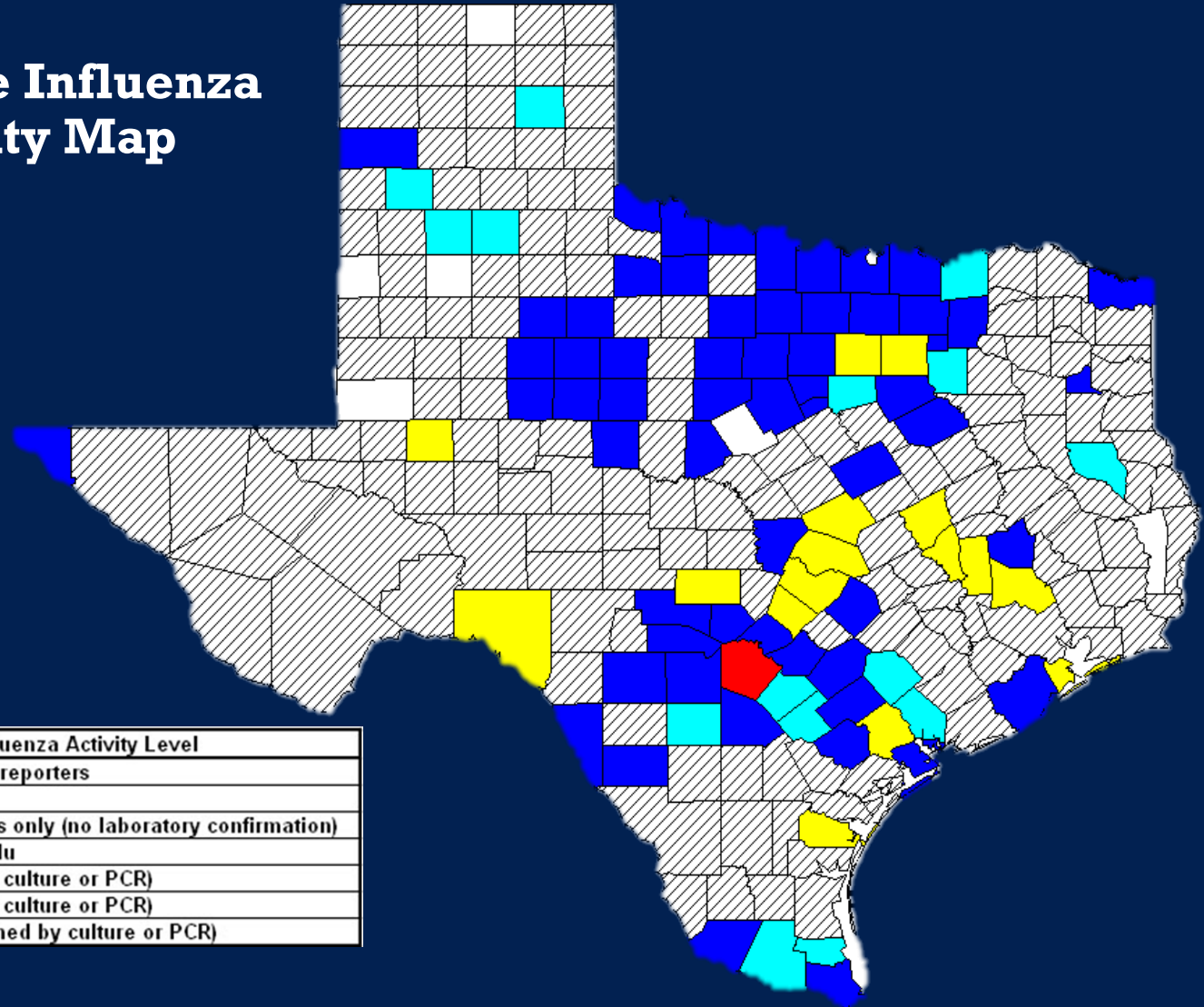
Statewide Influenza Activity Map



TEXAS

Health and Human Services

Texas Department of State
Health Services



County Influenza Activity Level	
	No information / no reporters
	No activity
	Influenza-like illness only (no laboratory confirmation)
	Rapid test positive flu
	Flu A (confirmed by culture or PCR)
	Flu B (confirmed by culture or PCR)
	Flu A and B (confirmed by culture or PCR)

Texas Hospital Laboratory Testing



TEXAS

Health and Human Services

Texas Department of State
Health Services

	Week 37	Season to Date Week Ending: September 17, 2022
Number of labs reporting flu tests	18	
Number of specimens tested	6724	368142
Number of positive specimens (%)	186 (2.77%)	22936 (6.23%)
Percentage of total tests that were antigen detection tests	18	
Positive specimens by type/subtype [n (%)]		
Influenza A	164 (88.17%)	22032 (96.06%)
Subtyping performed	28 (17.07%)	2642 (11.99%)
A (H1N1)	3 (10.71%)	33 (1.25%)
A (H3N2)	25 (89.29%)	2609 (98.75%)
Subtyping not performed	136 (82.93%)	19390 (88.01%)
Influenza B	22 (11.83%)	904 (3.94%)



TEXAS

Health and Human Services

Texas Department of State
Health Services

Other Non-Reportable Texas Respiratory Virus Testing

Virus	Number of Laboratories Testing	Tests Performed	Positive Tests	Percentage of Positive Tests
Adenovirus (respiratory)	14	2405	152	6.32%
HMPV	14	2405	31	1.29%
Parainfluenza virus	15	2477	138	5.57%
Rhino/enterovirus	15	2436	1061	43.56%
RSV^{†^}	17	5019	689	13.73%
Seasonal coronavirus (does not include MERS-CoV or SARS CoV-2)	15	2436	15	0.62%

[†]RSV tests displayed in the table are a combination of antigen detection, PCR, and culture tests. Some non-NREVSS reporters also contribute to the RSV data.

[^]Numbers and percentage may differ from the weekly RSV report. The weekly RSV report may be accessed at <https://www.dshs.state.tx.us/RSV/disease/rsv-Data.aspx>.

Texas Pneumonia and Influenza Deaths*



TEXAS

Health and Human Services

Texas Department of State
Health Services

Age Category (years)	Number of P&I Deaths	Mortality Rate (per 100,000)
0 - 4	41	1.88
5 - 17	27	0.49
18 - 49	641	4.74
50 - 64	1640	31.39
65 +	6806	160.54
Overall	9155	29.85

PHR	Number of P&I Deaths	Mortality Rate (per 100,000)
1	375	39.53
2/3	2573	28.80
4/5N	814	52.43
6/5S	2108	25.48
7	1040	27.87
8	983	30.26
9/10	483	29.70
11	777	33.05
Unknown	2	-
Overall	9155	29.85

* As of week ending Sept. 17, 2022



TEXAS

Health and Human Services

Texas Department of State Health Services

Texas Influenza-Associated Pediatric Mortality*

Month of Pediatric Death	Influenza A (H1N1)	Influenza A (H3N2)	Influenza A (Not Subtyped)	Influenza B	Influenza, Not Typed / Not Differentiated	Influenza virus co-infection: A (not subtyped) and B	Total, All Influenza Types / Subtypes
2022							
Jan	0	0	0	0	0	0	0
Feb	0	0	0	0	0	0	0
Mar	0	0	0	0	0	0	0
Apr	0	0	0	0	0	0	0
May	0	0	0	0	0	0	0
Jun	0	0	0	0	0	0	0
Jul	0	0	0	0	0	0	0
Aug	0	0	0	0	0	0	0
Sep	0	0	0	0	0	0	0
Total	0	0	0	0	0	0	0

* As of week ending Sept. 17, 2022



TEXAS
Health and Human
Services

Texas Department of State
Health Services

Thank you

Paul E. Grunenwald
Director, Infectious Disease
Prevention Section