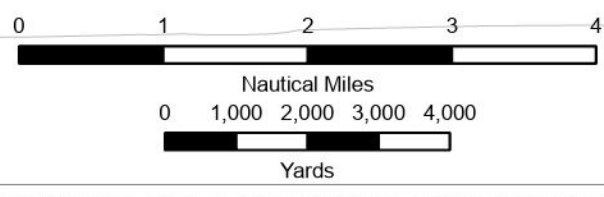
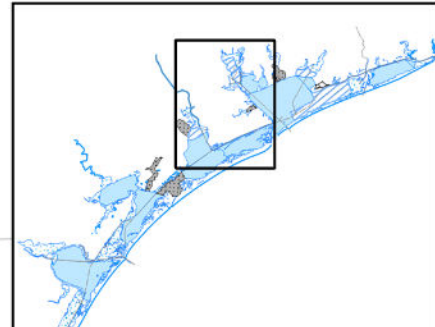
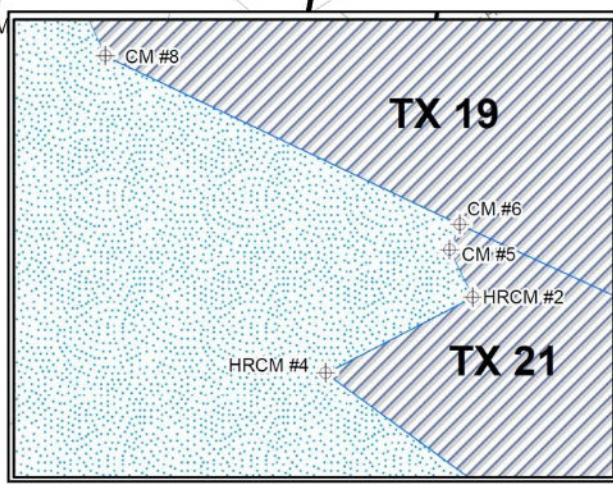
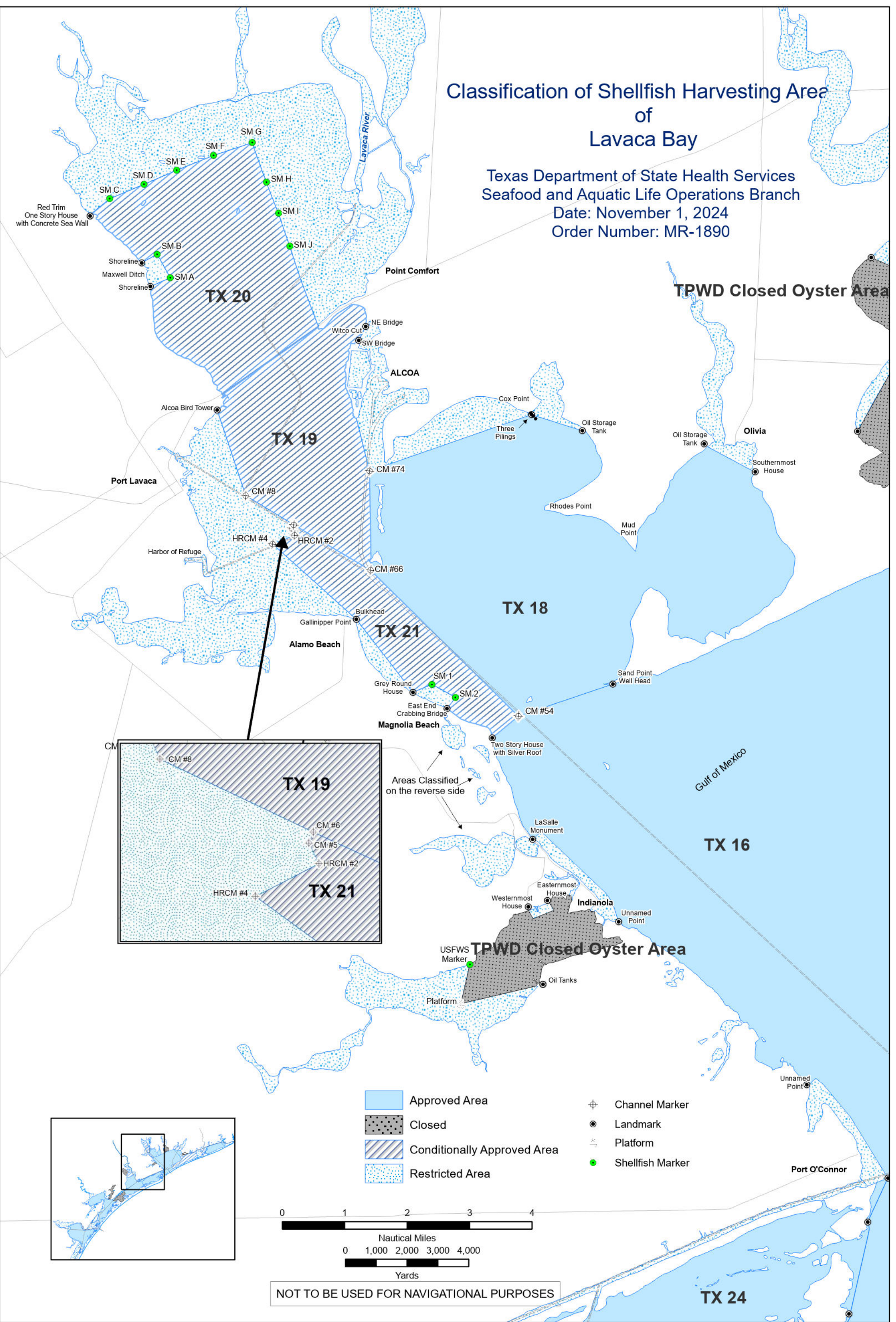


# Classification of Shellfish Harvesting Area of Lavaca Bay

Texas Department of State Health Services  
 Seafood and Aquatic Life Operations Branch  
 Date: November 1, 2024  
 Order Number: MR-1890



NOT TO BE USED FOR NAVIGATIONAL PURPOSES

# CLASSIFICATION OF SHELLFISH HARVESTING AREAS

OF

## LAVACA BAY

### TEXAS DEPARTMENT OF STATE HEALTH SERVICES SEAFOOD AND AQUATIC LIFE OPERATIONS BRANCH

**DATE: NOVEMBER 1, 2024      ORDER NUMBER: MR-1890**

The status of shellfish growing waters in Texas estuaries is subject to change by the Texas Department of State Health Services at any time. These changes may be due to high rainfall and runoff, flooding, hurricanes and other extreme weather conditions, major spills, red tides, or the failure or inefficient operation of wastewater treatment facilities. Current status of shellfish harvesting areas may be obtained from your local Texas Parks and Wildlife Department office or by calling, **toll-free (in state only), 1-800-685-0361**.

**PROHIBITED AREAS:** All areas not specifically designated as Restricted, Conditionally Approved, or Approved are classified as Prohibited and are closed to the harvesting of molluscan shellfish.

**RESTRICTED AREAS:** (closed to the taking of shellfish)

All area inshore of a line from the eastern shoreline to the Northeast side of the bridge (Lat. 28.661000° N, Long. 96.570000° W) near Whitco Cut to the Southwest side of the bridge (Lat. 28.657158° N, Long. 96.571822° W) to the offshore bank of the spoil island, Channel Marker #74 (Lat. 28.62258° N, Long. 96.56578° W), to three pilings near Cox Point, to the oil storage tank on the eastern shoreline of Cox Bay.

All area inshore of a line from Alcoa Bird Tower on Noble Point (Lat. 28.635967° N, Long. 96.613217° W), to Channel Marker #8 (Lat. 28.613683° N, Long. 96.602750° W), to Channel Marker #6 (Lat. 28.606811° N, Long. 96.587591° W), across the channel to Channel Marker #5 (Lat. 28.605833° N, Long. 96.588056° W), to Harbor of Refuge Channel Marker #2 (Lat. 28.604017° N, Long. 96.587117° W) following the Harbor of Refuge Channel to Harbor of Refuge Channel Marker #4 (Lat. 28.601274° N, Long. 96.593597° W), to the end of the bulkhead at Gallinipper Point (Lat. 28.582783° N, Long. 96.566667° W), to the Grey Round House on the west end of Magnolia Beach, to Shellfish Marker 1, to Shellfish Marker 2, to the east end of the crabbing bridge on Ocean Drive.

All of Keller Creek and Keller Bay inshore of a line from the oil storage tanks located closest to the water on the north shoreline of Keller Bay, to the southern most house on the east shoreline of Keller Bay.

All of Powderhorn Lake including an area inshore of a line 300 yards offshore from the Monument to the southern point of land at the mouth of Powderhorn Lake, including the mouth area inshore to its narrowest point.

All of Blind Bayou, Old Town Lake, and all the bodies of water contiguous to Blind Bayou and Old Town Lake up to their juncture with Lavaca and Matagorda bays.

All area north and east of a line from the red trim, one story house with concrete sea wall on the northwest shore of Lavaca Bay to Shellfish Marker C, to Shellfish Marker D, to Shellfish Marker E, to Shellfish Marker F, to Shellfish Marker G, to Shellfish Marker H, to Shellfish Marker I, to Shellfish Marker J, to the base of the Highway 35 Causeway near Point Comfort.

All inshore area from Shellfish Marker A to Shellfish Marker B at Maxwell Ditch.

All residential subdivision channels and harbor areas up to a radius of 300 yards offshore from the shoreline where the channels become land bound.

All areas within a 50 yard radius of recreational cabins and houseboats located on the bay.

**CONDITIONALLY APPROVED AREAS:** (Subject to status changes based upon meteorological or hydrological conditions) If unsure of current status, contact your local Texas Parks and Wildlife Department office, or call, toll-free **(in state only), 1-800-685-0361**.

**TX 19:**

TX 19 is defined as all areas of Lavaca Bay south-southeast of the Highway 35 causeway, and west of a line between channel markers #66 and #74 in the Matagorda Ship Channel, and east of a line from the Alcoa Bird Tower on Noble Point to Channel Marker #8, and north of a line from Channel Marker #6 and Channel Marker #66, excluding the restricted areas described above.

**TX 20:**

TX 20 is defined as that area of upper Lavaca Bay north of the Highway 35 Causeway, excluding the restricted areas described above.

**TX 21:**

TX 21 is defined as the area of Lavaca Bay inshore of a line from channel marker #6, to channel marker #66 in the Matagorda Ship Channel, to channel marker #54 in the Matagorda Ship Channel to the two story house with the silver roof (Lat. 28.553717° N, Long. 96.523017° W) on Indian Point, excluding the restricted areas described above.

**APPROVED AREAS:** For current status, contact your local Texas Parks and Wildlife Department office, or call, toll-free **(in state only), 1-800-685-0361**.

**TX 18:**

TX 18 is defined as the area of Lavaca Bay east of the Matagorda Ship Channel, and north of line from Sand Point to Channel Marker 54, this includes Cox and Keller Bays, and excluding the restricted areas described above.

Excluded from these areas are the restricted areas around cabins, houseboats, subdivision channels, and harbor areas described above.