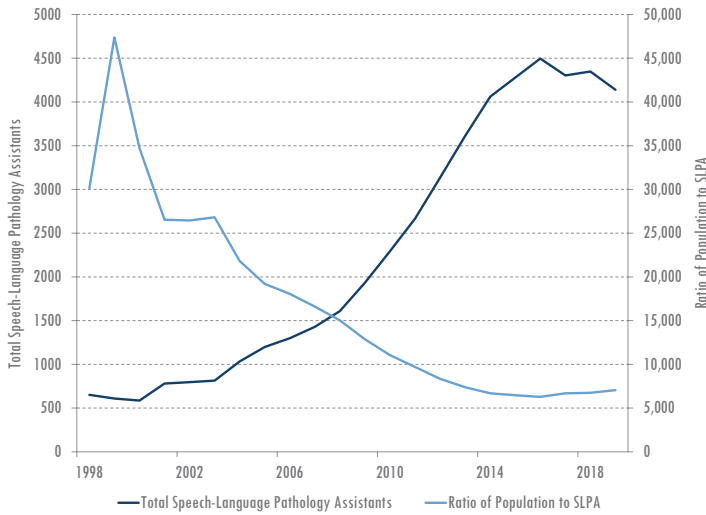




Speech-Language Pathology Assistants

2019

SLPA Growth Trends



In 2019, there were 4,140 actively licensed speech-language pathology assistants (SLPAs) in Texas.

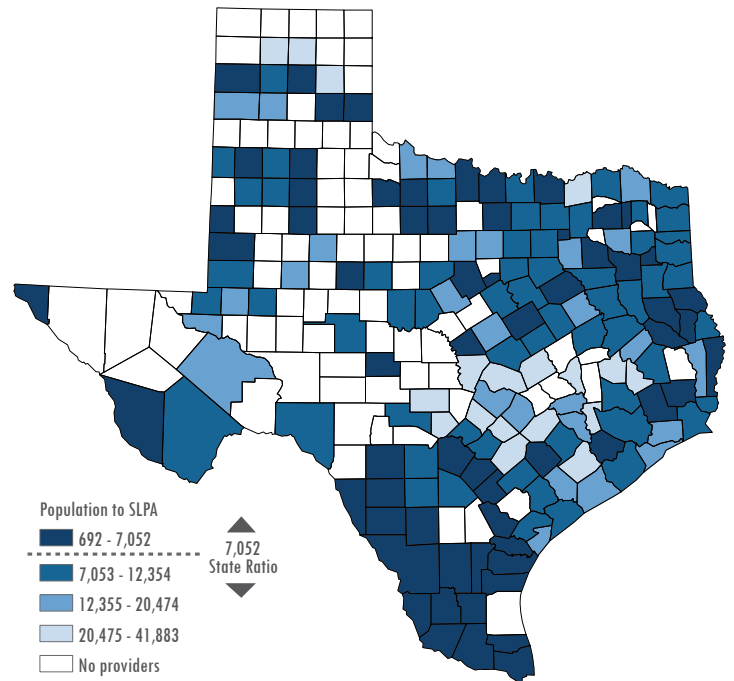
- This number represented a 1.9% increase since 2014 and a 114.2% increase since 2009.
- Relative to population growth, the size of the SLPA workforce has improved by 45.2% over the past 10 years.

Age Distribution

Age	Frequency	Percent
<25	500	12.1
26-30	1,080	26.1
31-35	901	21.8
36-40	597	14.4
41-45	381	9.2
46-50	306	7.4
51-55	163	3.9
56-60	137	3.3
61-65	46	1.1
>65	29	0.7
Total	4,140	100

- In 2019, 20.5% were between 41 and 55 years of age.
- 74.4% of SLPAs were 40 years of age or younger in 2019.

Ratio of Texas Population to SLPA by County



Geographic Designation	Ratio of Population to SLPA
Metropolitan	7,177
Non-metropolitan	6,150
Border	2,170
Non-border	9,281
Texas	7,052

SLPAs were not evenly distributed throughout the state.

- There was a 15.4% difference between the number of SLPAs in metropolitan and non-metropolitan areas even after controlling for population differences.
- Between border and non-border areas, the percent difference was 124.4%.

