



## Texas Influenza Surveillance Report 2016–2017 Season/2017 MMWR Week 12

(Mar. 19, 2017 – Mar. 25, 2017)  
Report produced on 03/31/2017

### Summary

Influenza (flu) activity has decreased the past few weeks in Texas; it appears to have peaked in mid-February. Compared to the previous week, the percentage of specimens testing positive for influenza reported by public health and hospital laboratories and patient visits due to influenza-like illness (ILI) marginally decreased. Two outbreaks due to influenza were reported. No influenza-associated pediatric deaths were reported. In addition to flu, other respiratory viruses—especially rhino/enteroviruses—were detected in Texas during week 12.

Table 1: Summary of Texas Influenza (Flu) and Influenza-like Illness (ILI) Activity for the Current Week

Texas Surveillance Component	Change from Previous Week	Current Week	Previous Week <sup>†</sup>	Page of Report
Statewide influenza activity level reported to CDC (geographic spread of influenza)	No Change	Regional	Regional	--
Statewide ILINet Activity Indicator assigned by CDC (intensity of influenza-like illness)	Decreased	Minimal	Moderate	--
Percentage of specimens positive for influenza by hospital laboratories	▼4.14%	15.18%	19.32% <sup>†</sup>	1
Percentage of specimens positive for influenza by public health laboratories	▼15.62%	55.29%	70.91% <sup>†</sup>	2
Percentage of visits due to ILI (ILINet)	▼1.27%	5.04%	6.31% <sup>†</sup>	4
Number of regions reporting increased flu/ILI activity	▲1	2	1	6
Number of regions reporting decreased flu/ILI activity	No change	5	5	6
Number of variant/novel influenza infections	No change	0	0	6
Number of ILI/influenza outbreaks	▼8	2	10	6
Number of pediatric influenza deaths	No new cases reported	0	0	7

<sup>†</sup>Data displayed have been updated since last week's flu report with any new reports received.

### Laboratory Results

#### Influenza

Hospital laboratories across Texas voluntarily report influenza tests (antigen, culture, and PCR) to the National Respiratory and Enteric Virus Surveillance System (NREVSS). Providers throughout Texas also submit specimens for influenza testing (PCR) to Texas public health laboratories, including the Texas Department of State Health Services (DSHS) state laboratory in Austin and the nine Texas Laboratory Response Network (LRN) laboratories. The results reported by Texas NREVSS participants and public health laboratories for the current week are summarized in the two tables below. Additional influenza test results (rapid tests, culture, PCR) and ILI activity were reported from providers and public health departments throughout the state (see county map at the end of this report).

Table 2: Influenza Testing Performed by Texas Hospital Laboratories for the Current Week

	Week 12	Season to Date
Number of labs reporting flu tests	9	
Number of specimens tested	2247	71272
Number of positive specimens (%) <sup>†</sup>	341 (15.18%)	11683 (16.39%)
Percentage of total tests that were antigen detection tests	58.17%	
<b>Positive specimens by type/subtype [n (%)]</b>		
<b>Influenza A</b>	<b>181 (53.08%)</b>	<b>9086 (77.77%)</b>
Subtyping performed	41 (22.65%)	2093 (23.04%)
A (H1N1)	9 (21.95%)	338 (16.15%)
A (H3N2)	32 (78.05%)	1755 (83.85%)
Subtyping not performed	140 (77.35%)	6993 (76.96%)
<b>Influenza B</b>	<b>160 (46.92%)</b>	<b>2597 (22.23%)</b>

<sup>†</sup>Laboratory data in 2016-2017 season reports may not be comparable to reports from previous seasons because the data only includes hospital laboratories data for the current season.

Figure 1: Number and Percentage of Tests (Antigen, Culture, PCR) Positive for Influenza by Type and Subtype Reported by Texas Hospital Laboratories, 2016–2017 Season

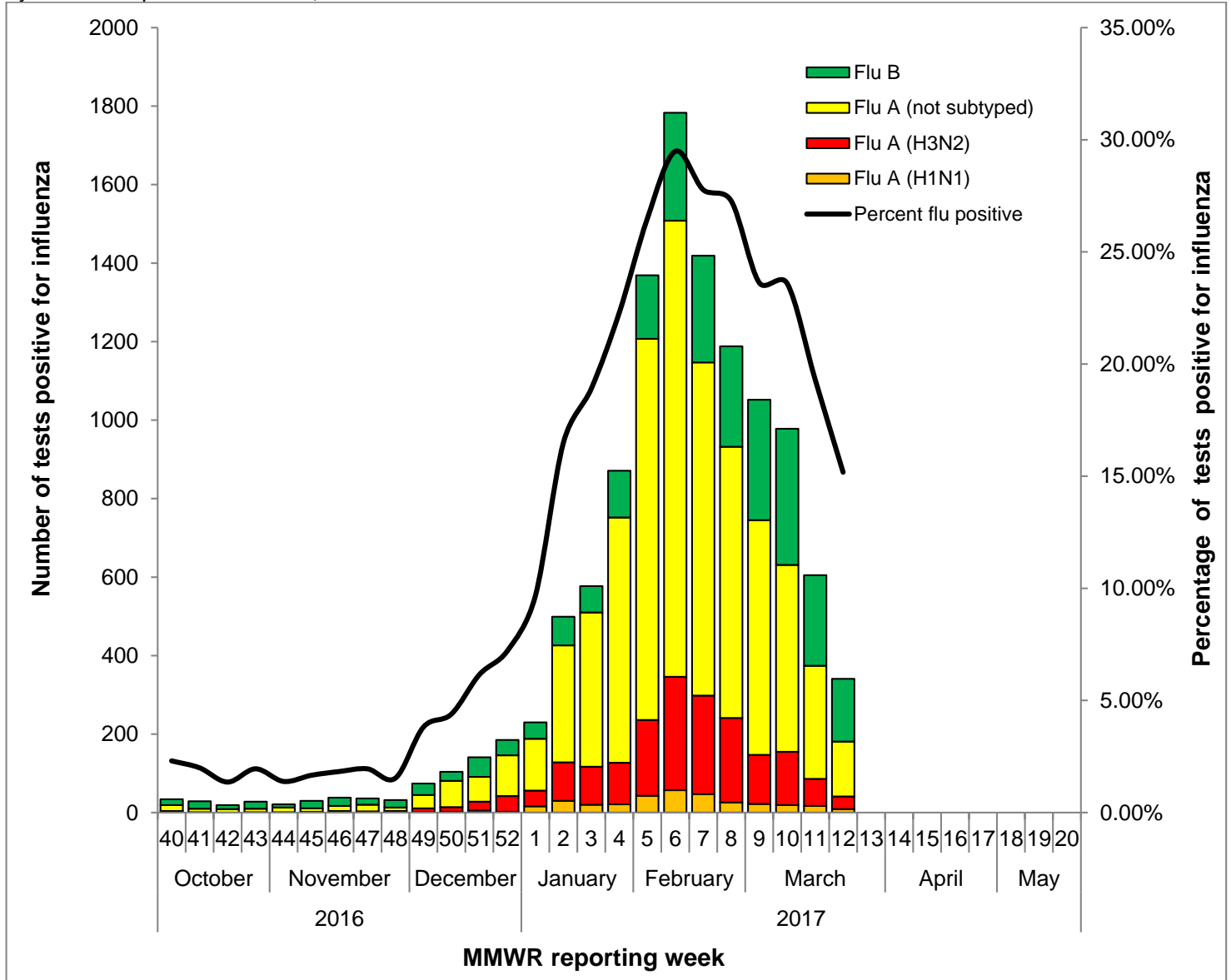
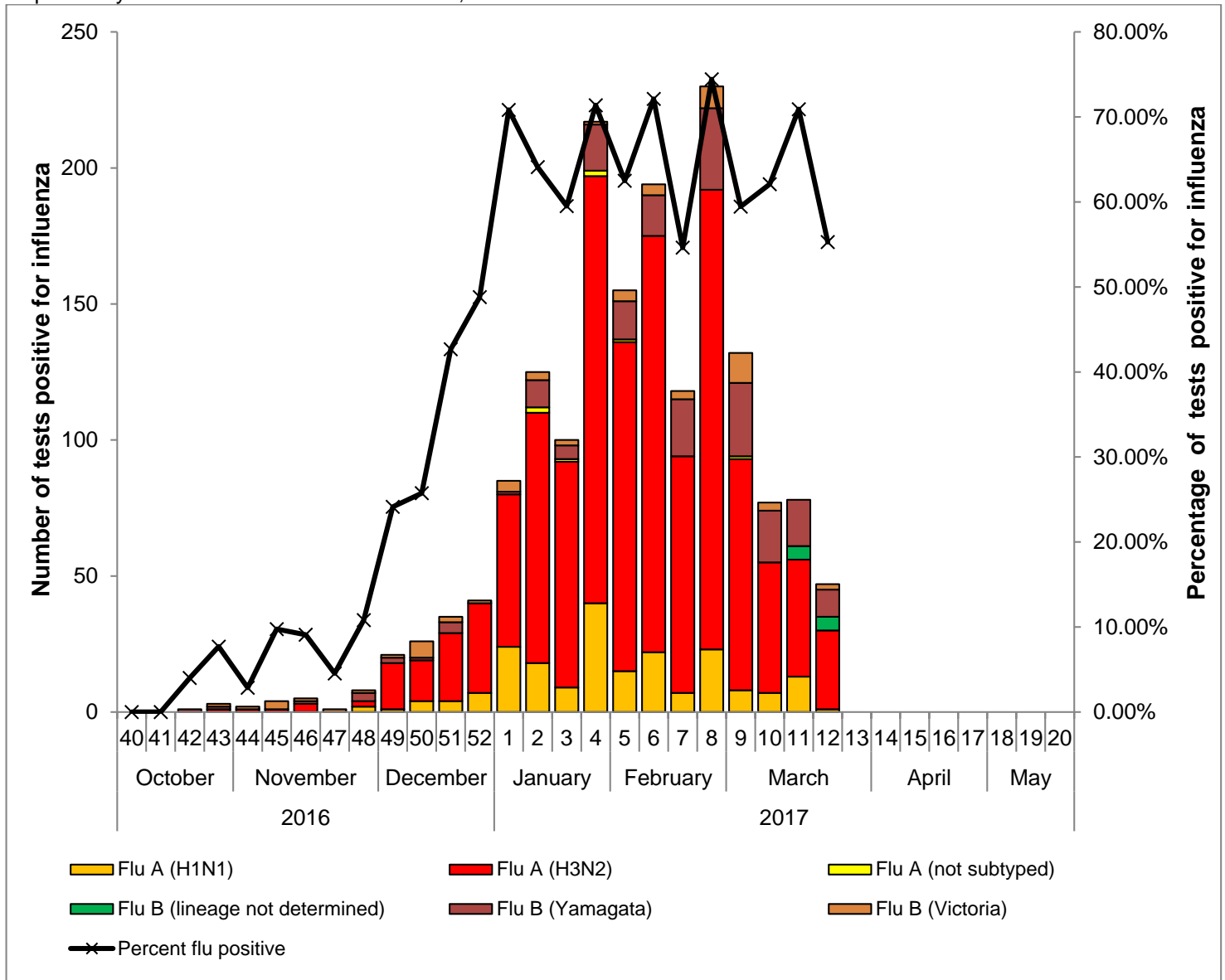


Table 3: Influenza Testing Performed by Texas Public Health Laboratories for the Current Week

	Week 12	Season to Date
Number of labs reporting flu tests	6	
Number of specimens tested	85	3094
Number of positive specimens (%) <sup>†</sup>	47 (55.29%)	1706 (55.14%)
Positive specimens by type/subtype/lineage [n (%)]		
<b>Influenza A</b>	<b>30 (63.83%)</b>	<b>1433 (84.00%)</b>
Subtyping performed	30 (100.00%)	1426 (99.51%)
A (H1N1)	1 (3.33%)	205 (14.38%)
A (H3N2)	29 (96.67%)	1221 (85.62%)
Subtyping not performed	0 (0.00%)	7 (0.49%)
<b>Influenza B</b>	<b>17 (36.17%)</b>	<b>273 (16.00%)</b>
Lineage testing performed	12 (70.59%)	262 (95.97)
B/Victoria	2 (16.67%)	63 (24.05%)
B/Yamagata	10 (83.33%)	199 (75.95%)
Lineage testing not performed	5 (29.41%)	11 (4.03%)

<sup>†</sup>Laboratory data in 2016-2017 season reports may not be comparable to reports from previous seasons because the data only includes DSHS and LRN laboratory data for the current season.

Figure 2: Number and Percentage of Tests (Culture, PCR) Positive for Influenza by Type, Subtype, and Lineage Reported by Texas Public Health Laboratories, 2016–2017 Season



**Other Respiratory Viruses**

The NREVSS system collects information on a variety of respiratory viruses in addition to influenza including parainfluenza virus, respiratory syncytial virus (RSV), rhinovirus, human metapneumovirus (HMPV), seasonal coronavirus, and respiratory adenovirus. The results for the current week are summarized below.

Table 4: Non-Influenza Respiratory Virus Testing Performed by Texas NREVSS Laboratories for the Current Week

Virus	Number of Laboratories Testing	Tests Performed	Positive Tests	Percentage of Tests Positive
Adenovirus (respiratory)	6	743	28	3.77%
HMPV	7	666	89	13.36%
Parainfluenza virus	7	927	55	5.93%
Rhinovirus	6	576	122	21.18%
RSV <sup>†</sup>	9	1104	60	5.43%
Seasonal coronavirus (does not include MERS-CoV)	4	535	36	6.73%

<sup>†</sup>RSV tests displayed in the table are a combination of antigen detection, PCR, and culture tests. Some non-NREVSS reporters also contribute to the RSV data.

<sup>^</sup>Numbers and percentage may differ from the weekly RSV report. The weekly RSV report may be accessed at <https://www.dshs.state.tx.us/RSV/disease/rsv-Data.aspx>.

**Antigenic Characterization**

Since October 02, 2016, CDC has reported antigenic characterization results from twenty-one influenza A (H3N2) viruses, nineteen influenza A (H1N1) viruses and twenty-three influenza B viruses received from the Texas Department of State Health Services (DSHS) Laboratory, the Dallas County Health and Human Services Laboratory Response Network (LRN) Laboratory, and the San Antonio LRN Laboratory. The DSHS Laboratory and the two LRN laboratories send a representative sample of influenza viruses to the CDC throughout the flu season.

**Influenza A (H3N2) [21]**

- Twenty-one (100.0%) viruses were related to A/Hong Kong/4801/2014 virus, the influenza A (H3N2) component of the 2016-2017 Northern Hemisphere influenza vaccine.

**Influenza A (H1N1) [19]**

- Nineteen (100.0%) viruses were related to A/California/07/2009. This virus strain was included in the 2016-2017 influenza vaccine for the Northern Hemisphere.

**Influenza B [23]**

- Victoria lineage [12]: Twelve (52.17%) influenza B/Victoria-lineage viruses has been characterized as B/Brisbane/60/2008-like, which is included as an influenza B component of the 2016-2017 Northern Hemisphere trivalent and quadrivalent influenza vaccines.
- Yamagata lineage [11]: Eleven (47.83 %) influenza B/Yamagata-lineage viruses have been characterized from Texas. A B/Phuket/3073/2013-like virus, which belongs to the B/Yamagata lineage, is included as an influenza B component of the 2016-2017 Northern Hemisphere quadrivalent influenza vaccine.

**Antiviral Resistance**

No antiviral resistance testing data for Texas specimens are available at this time.

**U.S. Outpatient Influenza-like Illness Surveillance Network (ILINet)**

Table 5: Texas ILINet Reporting and Patient Visit Summary for the Current Week

	Week 12
Number of providers reporting <sup>†</sup>	101
Number of providers reporting patient visits	101
Number (%) of providers with at least one ILI case	93 (92.08%)
Percentage of all visits due to ILI	5.04%
Texas ILINet baseline <sup>‡</sup> , 2016–2017	6.64%

<sup>†</sup>Reporting providers include both ILINet and RVSP providers.

<sup>‡</sup>The baseline is the mean percentage of patient visits for ILI during non-influenza weeks for the previous three seasons plus two standard deviations. A “non-influenza week” is defined as a week that accounted for less than 2% of the season’s total number of specimens that tested positive for influenza

Table 6: Percentage of Visits for Influenza-like Illness Reported by Texas ILINet Providers (as of 03/30/17 12:20 PM)

Week	Providers Reporting	Number of ILI Cases by Age Group (Years)					Total ILI (all ages)	Total Patients	% ILI
		0-4	5-24	25-49	50-64	65+			
201640	125	166	345	142	106	145	904	33457	2.70%
201641	123	140	303	151	87	137	818	31233	2.62%
201642	119	132	263	127	118	109	749	30871	2.43%
201643	119	138	314	149	139	125	865	30754	2.81%
201644	112	115	295	102	36	33	581	28878	2.01%
201645	121	153	273	167	104	133	830	30824	2.69%
201646	121	186	357	143	116	148	950	31953	2.97%
201647	119	146	215	141	115	116	733	22334	3.28%
201648	117	197	302	185	165	192	1041	29957	3.47%
201649	118	226	337	219	182	196	1160	28629	4.05%
201650	112	241	377	184	93	67	962	26540	3.62%
201651	113	232	342	316	210	200	1300	24910	5.22%
201652	114	180	233	357	220	185	1175	23112	5.08%

Week	Providers Reporting	Number of ILI Cases by Age Group (Years)					Total ILI (all ages)	Total Patients	% ILI
		0-4	5-24	25-49	50-64	65+			
201701	118	188	316	394	222	212	1332	27199	4.90%
201702	117	223	628	420	296	243	1810	30922	5.85%
201703	117	242	731	413	255	225	1866	30815	6.06%
201704	108	254	911	408	169	68	1810	29558	6.12%
201705	118	380	1422	680	354	270	3106	36254	8.57%
201706	118	418	1739	938	476	326	3897	36284	10.74%
201707	92	201	1267	778	444	264	2954	29513	10.01%
201708	109	339	1211	744	397	224	2915	31287	9.32%
201709	110	291	1042	682	323	226	2564	32188	7.97%
201710	108	225	969	645	331	203	2373	31063	7.64%
201711	105	211	501	456	245	151	1564	24771	6.31%
201712	101	172	499	387	236	179	1473	29214	5.04%

Figure 3: Percentage of Visits Due to Influenza-like Illness Reported by Texas ILINet Participants, 2016–2017 Season

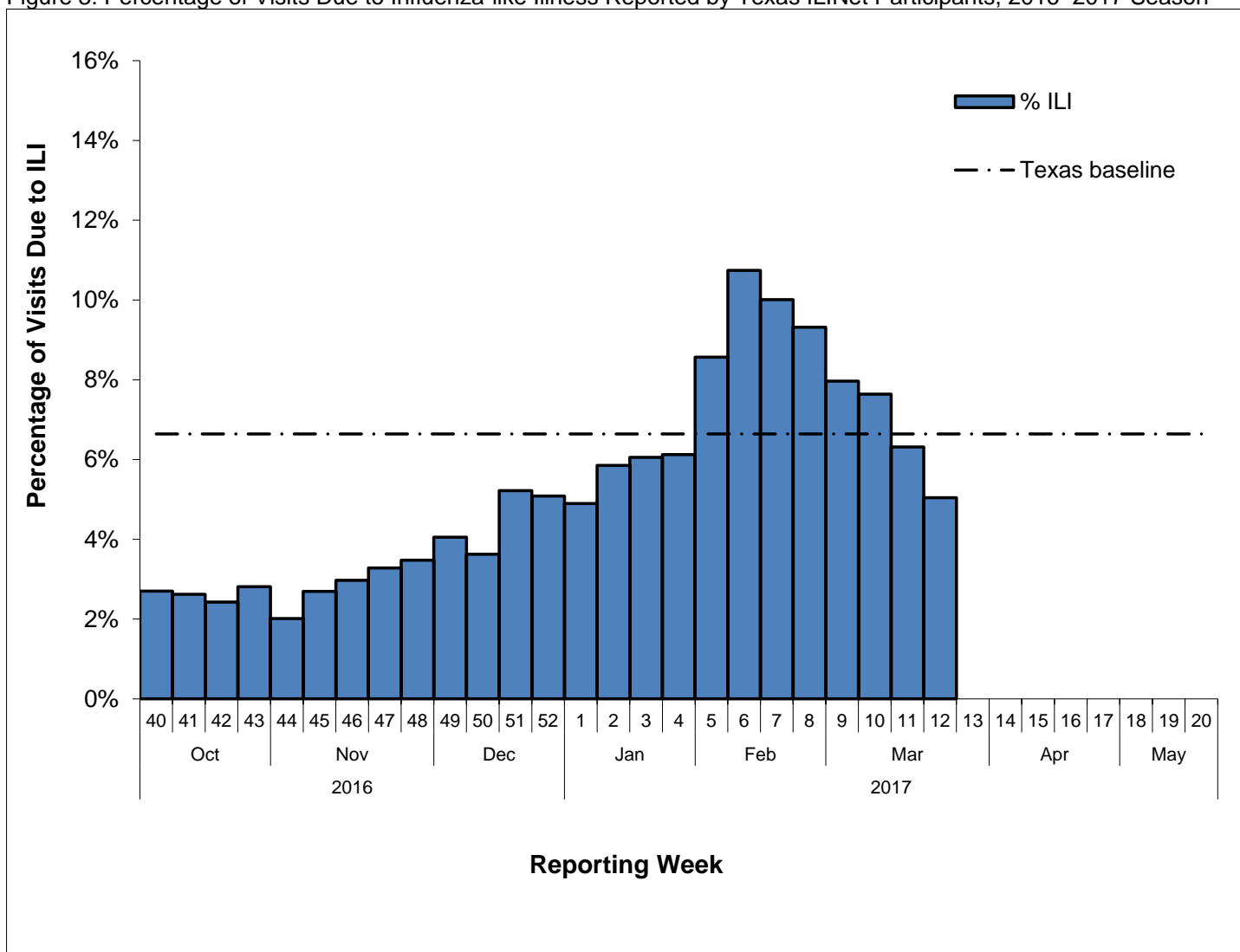
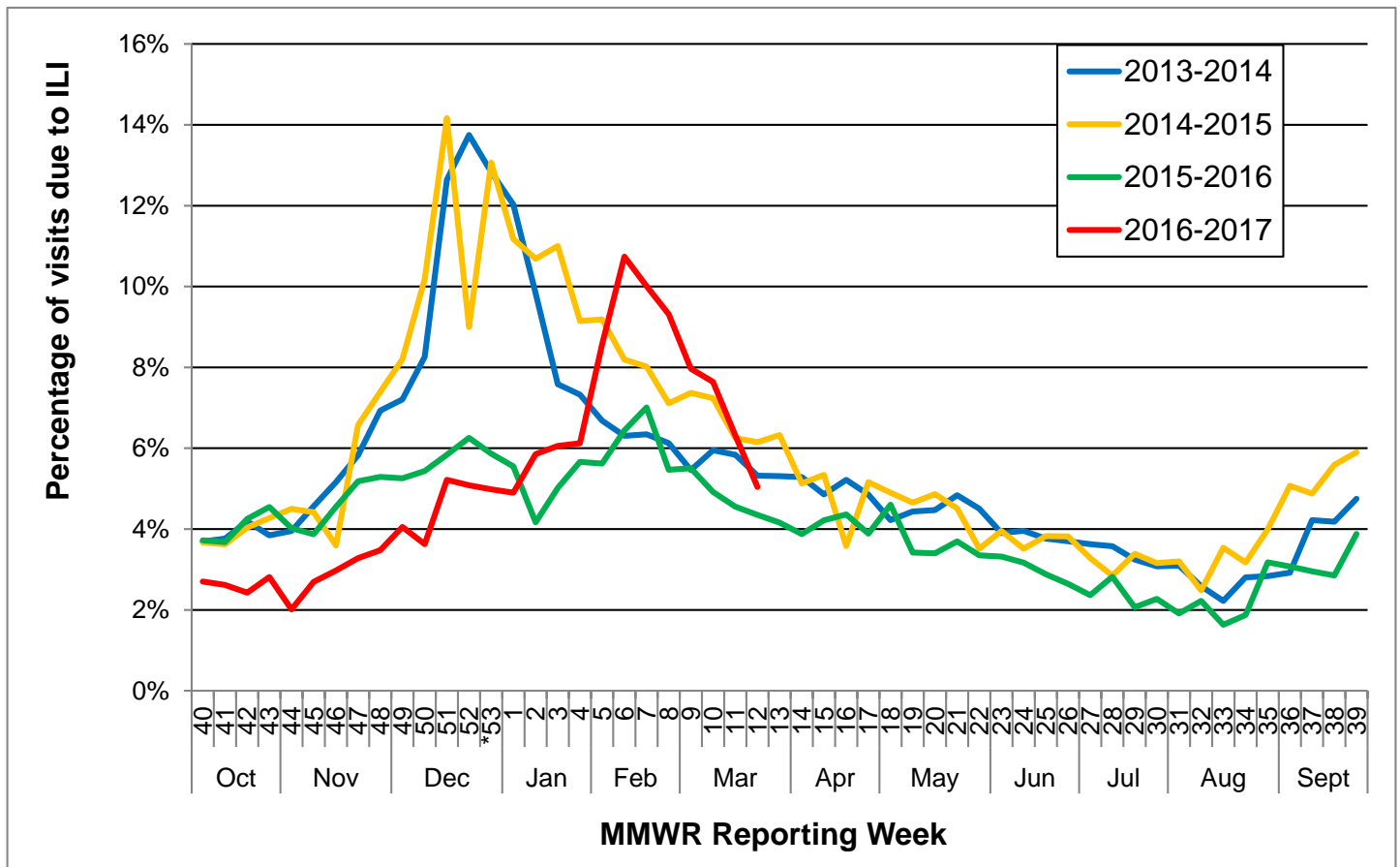


Figure 4: Percentage of Visits Due to Influenza-like Illness Reported by Texas ILINet Participants, 2013–2017 Seasons\*



\*There was a week 53 in the 2014-2015 influenza season, but there is not a week 53 in the 2016-2017 influenza season or the other previous seasons; therefore the week 53 data point for those seasons is an average of week 52 and 1.

### Reports from Health Service Regions

Reports were received from all Health Service Regions (HSRs) during week 12.

Table 7: Influenza Activity Compared to Week 11 by Health Service Region (HSR)

Influenza Activity Comparison	
Increased	1 and 7
Same	11
Decreased	2/3, 4/5N, 6/5S, 8, and 9/10
Unsure	

### Variant Influenza Viruses

No variant or novel influenza viruses have been detected in Texas in 2016 or 2017.

### Institutional Outbreaks and School Closures

During week 12, two institutional influenza outbreaks were reported. One influenza outbreak occurred at a long-term care facility located in HSR 11. Nine individuals (six residents and three staff) are associated with this outbreak. Eight individuals were positive for influenza A by rapid test and one person was positive for influenza B by rapid test. The other influenza outbreak occurred at a long-term care facility located in HSR 8. Four people are associated with this outbreak. All were positive for influenza B by rapid test. Various control measures, such as isolation of the ill and giving anti-viral prophylaxis to residents, were implemented for these two outbreaks.

No school closures were reported during week 12.

## TX P&I Mortality Surveillance Data

Pneumonia and influenza (P&I) death data are obtained from death certificates of Texas residents whose underlying or contributing cause(s) of death is reported as pneumonia or influenza. P&I deaths are identified based on ICD-10 multiple cause of death codes. In particular, P&I deaths are based on ICD-10 pneumonia and influenza mortality codes.

Four thousand two hundred and twenty-nine P&I deaths have been reported in Texas during the 2016-2017 influenza season.

Table 8: Texas P&I Deaths Occurring Oct. 02, 2016-Mar. 29, 2017\* by Age

Age Category (years)	Number of P&I Deaths <sup>+</sup>	Mortality Rate (per 100,000)
0 - 4	20	0.97
5 - 17	11	0.20
18 - 49	227	1.78
50 - 64	679	13.45
65 +	3292	93.73
<b>Overall</b>	<b>4229</b>	<b>14.69</b>

\*NOTE: Data are provisional and subject to change, errors, and duplicates

<sup>+</sup> If the cell count is less than 10, the number of P&I deaths is suppressed and <10 is written in the cell.

Table 9: Texas P&I Deaths Occurring Oct. 02, 2016-Mar. 29, 2017\* by Health Service Region (HSR)

HSR	Number of P&I Deaths <sup>+</sup>	Mortality Rate (per 100,000)
1	172	18.90
2/3	1145	13.75
4/5N	313	19.50
6/5S	967	12.87
7	479	13.70
8	476	15.98
9/10	234	15.07
11	443	18.33
<b>Overall</b>	<b>4229</b>	<b>14.69</b>

\*NOTE: Data are provisional and subject to change, errors, and duplicates <sup>+</sup> If the cell count is less than 10, the number of P&I deaths is suppressed and <10 is written in the cell.

## Influenza-Associated Pediatric Mortality

No influenza-associated pediatric deaths were reported during week 12.

Two influenza-associated pediatric deaths have been reported in Texas during the 2016-2017 influenza season. Cases of influenza-associated pediatric mortality (children <18 years of age) are reportable year-round and by law in Texas.

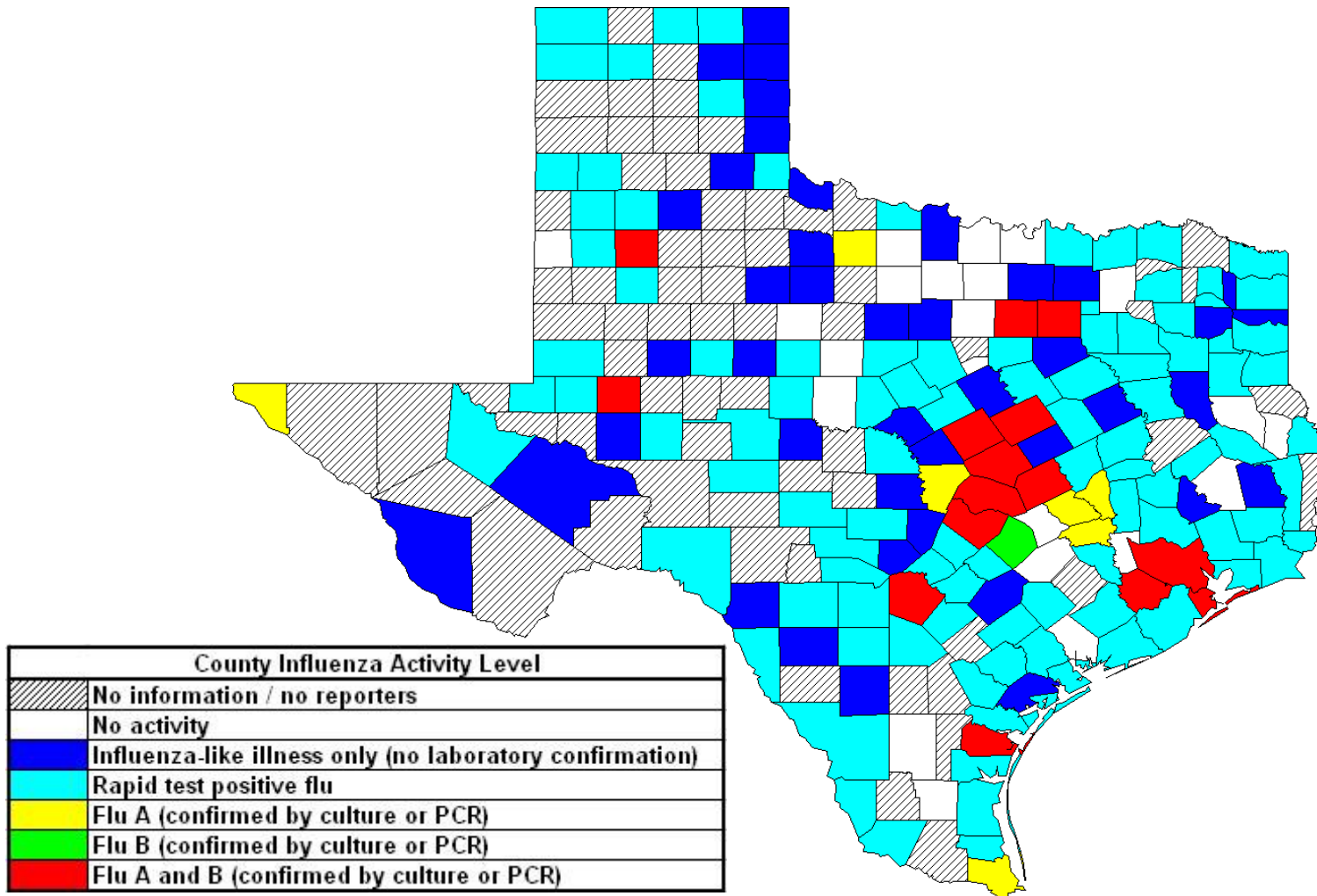
Table 10: Influenza-Associated Pediatric Deaths Reported in Texas during the 2016–2017 Season

Month of Pediatric Death	Influenza A (H1N1)	Influenza A (H3N2)	Influenza A (Not Subtyped)	Influenza B	Influenza, Not Typed / Not Differentiated	Influenza virus co-infection: A (not subtyped) and B	Total, All Influenza Types / Subtypes
<b>2016</b>							
October	0	0	0	0	0	0	0
November	0	0	0	0	0	0	0
December	0	0	0	0	0	0	0
<b>2017</b>							
January	0	0	0	0	0	0	0
February	1	1	0	0	0	0	2
March	0	0	0	0	0	0	0
<b>Total</b>	<b>1</b>	<b>1</b>	<b>0</b>	<b>0</b>	<b>0</b>	<b>0</b>	<b>2</b>



## Statewide Influenza Activity Map

Figure 5: Texas Map Displaying the Highest Level of Influenza or ILI Activity Reported by County for the Week Ending Mar. 25, 2017 (MMWR Week 12)



Please note: The majority of influenza cases are not reportable by law in Texas. This map contains data from sentinel sites and only displays influenza and ILI cases that were reported to public health. Positive laboratory results are reported according to specimen collection date, or date received in the laboratory if the former is unknown.



# Texas Influenza Surveillance Components and Measures

Activity codes (see <http://www.cdc.gov/flu/weekly/overview.htm>)

Statewide influenza activity level

A code reported weekly by states and territories to CDC indicating the geographic spread of influenza in the state. Levels are no activity, sporadic, local, regional, and widespread.

ILINet Activity Indicator

A statewide level of influenza-like illness intensity (on a scale of 1-10, with 1 being the lowest level) assigned to each state weekly by CDC based on data reported through ILINet.

## Morbidity

Novel/variant influenza

Thorough investigations are performed on all cases of novel/variant influenza. *This condition is reportable by law in Texas.*

Texas ILINet

Providers voluntarily report weekly to CDC's ILINet system on the number of outpatient visits for ILI and total outpatient visits. Providers may submit up to 5 specimens per month for influenza testing. See <http://www.dshs.state.tx.us/idcu/disease/influenza/surveillance/ILINet/> for information on how to become an ILINet provider.

ILI activity

Non-ILINet providers report ILI or influenza data weekly to local or regional health departments.

Outbreaks

Healthcare, schools, childcare, and correctional facilities report ILI and influenza outbreaks to health departments in Texas. *This condition is reportable by law in Texas.*

## Mortality

Pneumonia and Influenza (P&I) Mortality Surveillance

The DSHS Vital Statistics Unit collects death certificate information for all deaths on Texas residents from various partners such as funeral homes and local registrars around the state. The death certificates are then sent to the National Center for Health Statistics (NCHS) where the cause of death and underlying causes of death on the death certificates are coded with ICD-10 mortality codes. Once death certificates are coded, the information is sent back to DSHS Center for Health Statistics (CHS). CHS produces a Weekly Pneumonia and Influenza (P&I) Death Report and sends it to the State Influenza Surveillance Coordinator for inclusion in the Texas Weekly Flu Report. P&I deaths are identified based on ICD-10 multiple cause of death codes, and in particular, pneumonia and influenza mortality codes. Delays inherent in death reporting and coding practices may cause the number of reported P&I deaths to vary considerably each week.

Influenza-associated pediatric deaths

Deaths that are associated with influenza in children < 18 years of age are reported to health departments in Texas. *This condition is reportable by law in Texas.* <http://www.dshs.state.tx.us/idcu/disease/IAPM/>

## Laboratory

DSHS Austin laboratory

Providers voluntarily submit specimens to the DSHS Austin laboratory for influenza PCR testing throughout the season. Providers sign up for this program through their local health departments.

Laboratory Response Network (LRN) laboratories

Providers voluntarily submit specimens to one of the 9 Texas LRNs for influenza PCR testing throughout the season. Providers sign up for this program through their local health departments.

NREVSS

Laboratories voluntarily report influenza and other respiratory virus data weekly through the CDC's online NREVSS reporting system. **Laboratories sign up for this program by contacting DSHS.** <http://www.cdc.gov/surveillance/nrevss/>

## **Recommended Resources**

*Texas Department of State Health Services*

DSHS influenza page: <http://www.texasflu.org/>

Influenza surveillance data and reports: <http://www.dshs.state.tx.us/idcu/disease/influenza/surveillance/>

Map of Texas Health Service Regions: <http://www.dshs.state.tx.us/regions/state.shtm>

*Centers for Disease Control and Prevention*

National FluView weekly flu report: <http://www.cdc.gov/flu/weekly/>

Variant influenza viruses: <http://www.cdc.gov/flu/swineflu/variant.htm>

Avian influenza viruses: <http://www.cdc.gov/flu/avianflu/index.htm>

Swine influenza viruses: <http://www.cdc.gov/flu/swineflu/index.htm>

Infection Control in Healthcare Facilities: <http://www.cdc.gov/flu/professionals/infectioncontrol/>

Seasonal Flu Information for Schools and Childcare Providers: <http://www.cdc.gov/flu/school/index.htm>

*World Health Organization*

Influenza page: <http://www.who.int/topics/influenza/en/>

Disease Outbreak News: <http://www.who.int/csr/don/en/>