



# Weekly Flu Surveillance Report

Week 19- May 7th - May 13th

## Disclaimer

Most cases of influenza are not reportable in the state of Texas, thus the data in this report was collected from hospitals, clinics, and schools throughout the region who have agreed to voluntarily submit data.

## Definitions

**ILI:** Influenza-Like Illness. This is an illness that resembles the flu, but has not been confirmed. **Rapid:** These tests are typically done in-house to quickly test for influenza. **PCR:** These tests are generally more precise than rapid tests and are performed at the DSHS state lab and many commercial labs to confirm a case of influenza.

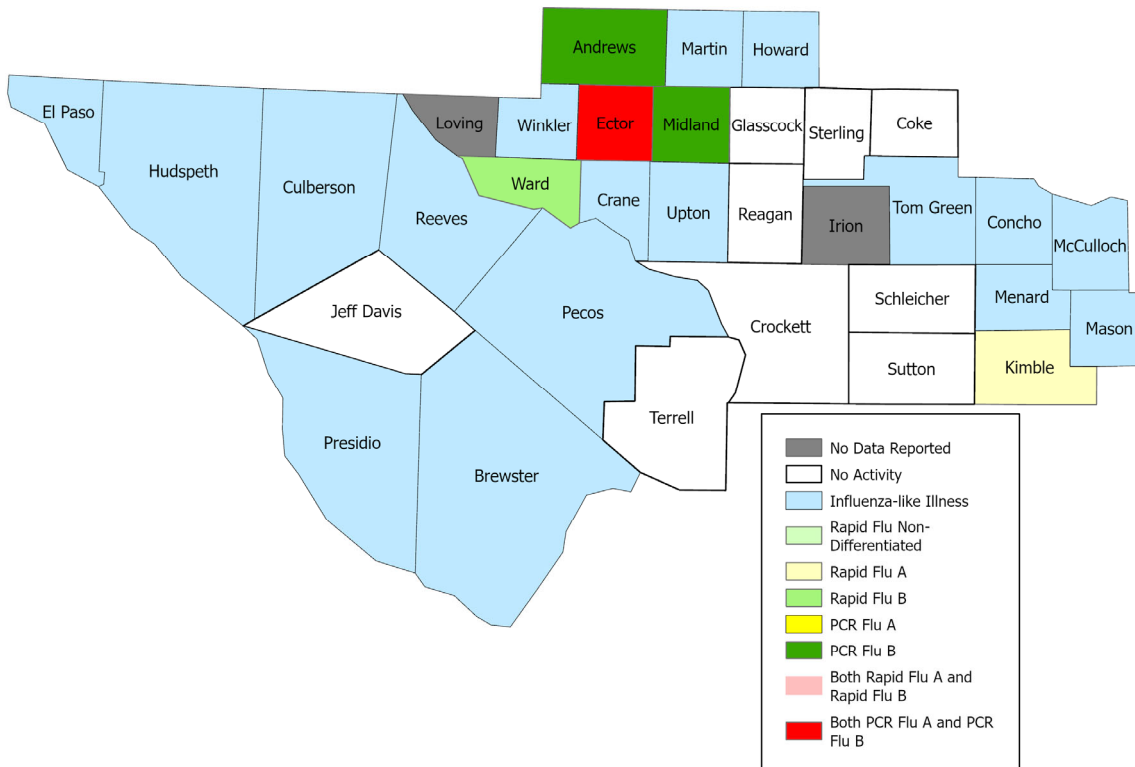
## Summary Data

Condition	Week 19	Week 18	Week 17
Number of Counties Reporting (36 total)	↓ 34	35	36
Number of Counties Reporting ILI	↑ 16	12	14
Number of Counties Reporting High Levels of ILI*	→ 5	5	3
Number of Counties Reporting Flu A	↑ 2	1	3
Number of Counties Reporting Flu B	↓ 0	4	3
Number of Counties Reporting Flu A & Flu B	↓ 0	1	1

The arrows represent changes from the previous week. A sideways arrow means there was no change in that condition.

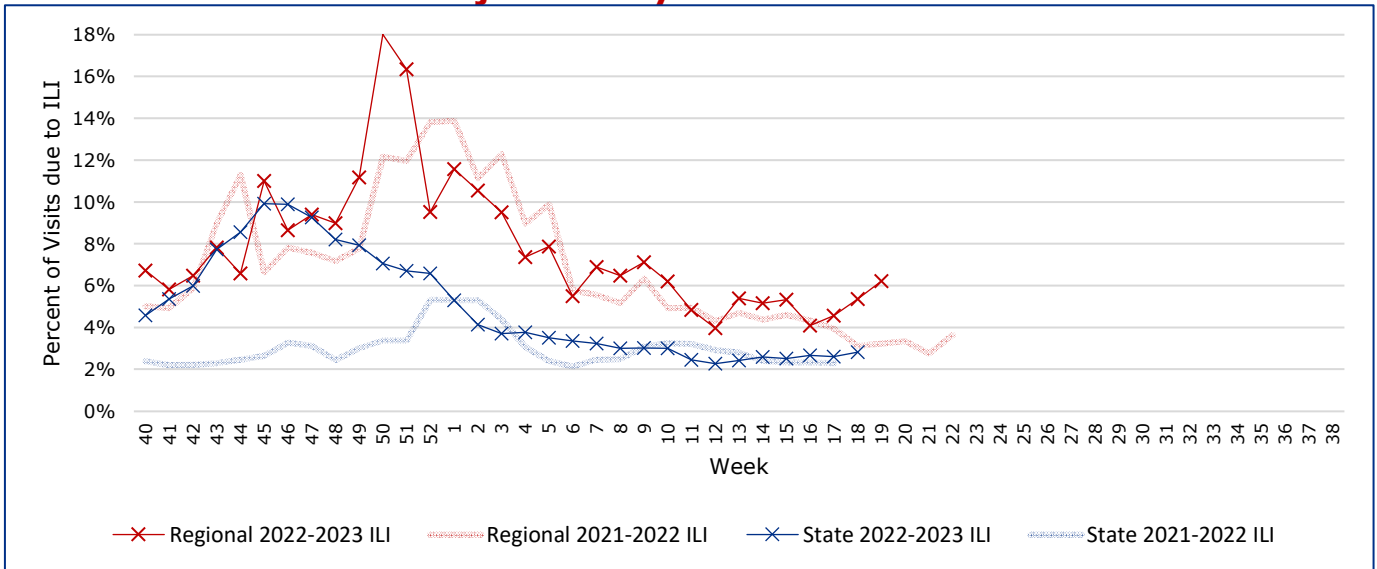
\*Counties with total percent of visits due to ILI above 4.0% for the week are considered to have high/abnormal levels.

## Map of Regional Flu Activity



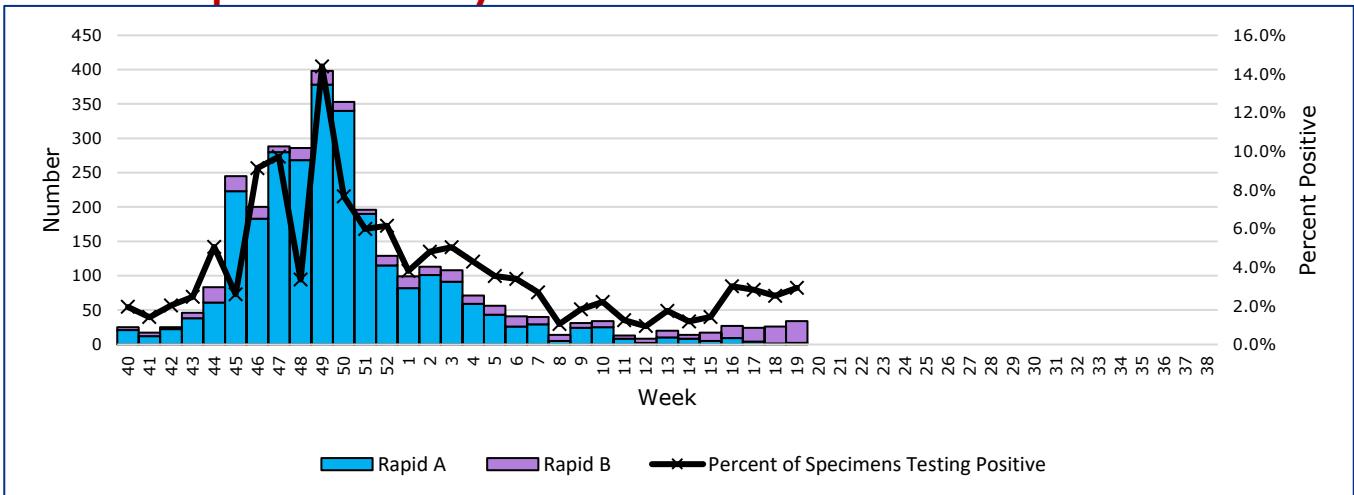
The map above depicts the previous week's reports of flu or influenza-like illness activity in each county. The legend on the bottom right of the map describes the meaning of each color.

## Influenza-Like Illness Projections by Week



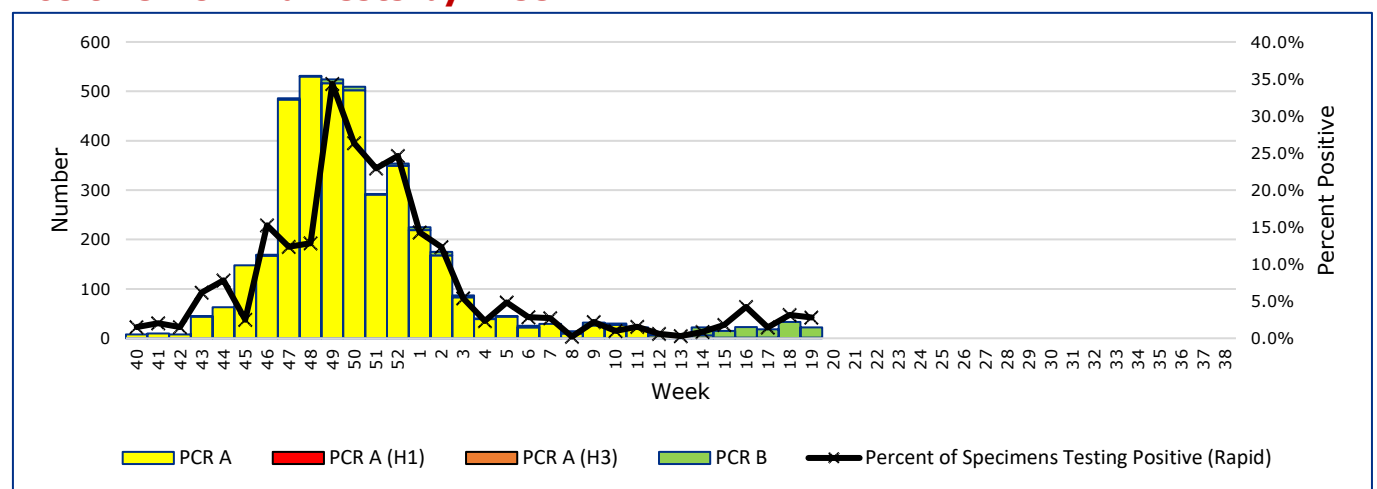
This chart documents the percentage of patient visits that were due to ILI at hospitals and clinics around the region, excluding confirmed COVID cases. It compares our region's data with the state's data and also compares to last flu season.

## Positive Rapid Flu Tests by Week



This chart documents the number of rapid tests that have come back positive for flu A and flu B each week throughout the region.

## Positive PCR Flu Tests by Week

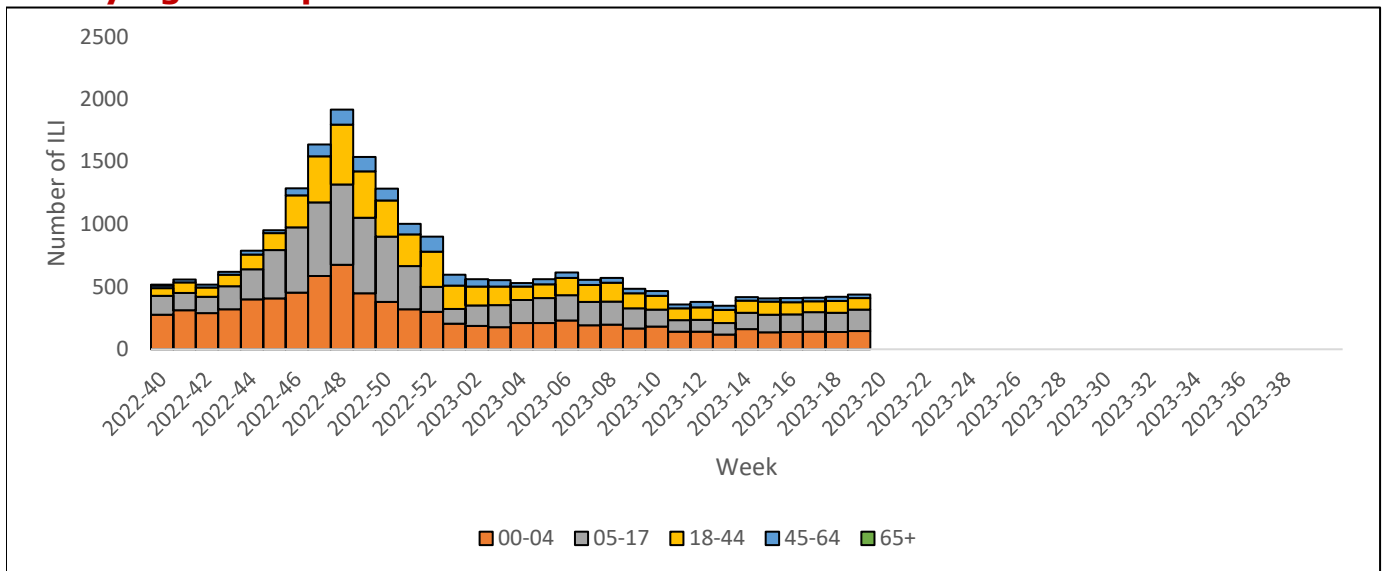


This chart documents the number of PCR tests that have come back positive for flu A and flu B each week throughout the region.

## Flu Data by County

County	Week 19				Week 18				Week 17			
	Patient Visits	% with ILI	Flu A	Flu B	Patient Visits	% with ILI	Flu A	Flu B	Patient Visits	% with ILI	Flu A	Flu B
Andrews	621	6%	0	1	666	5%	0	3	614	5%	0	2
Brewster	87	0%	0	0	88	0%	0	0	85	0%	0	0
Coke	8	0%	0	0	5	0%	0	0	6	0%	0	0
Concho	22	0%	0	0	19	0%	0	0	22	0%	0	0
Crane	38	0%	0	0	29	0%	0	0	30	0%	0	0
Crockett	8	0%	0	0	6	0%	0	0	3	0%	0	0
Culberson	9	0%	0	0	7	0%	0	0	5	0%	0	0
Ector	5575	10%	2	45	5999	8%	1	48	5332	9%	1	30
El Paso	7324	0%	0	0	7492	0%	0	0	7521	0%	0	0
Glasscock	1	0%	0	0	3	0%	0	0	1	0%	0	0
Howard	330	0%	0	0	376	0%	0	0	327	0%	0	0
Hudspeth	28	0%	0	0	18	0%	0	0	20	0%	0	0
Irion	0		0	0	1	0%	0	0	2	0%	0	0
Jeff Davis	18	0%	0	0	18	0%	0	0	9	0%	0	0
Kimble	114	7%	1	0	138	7%	0	0	111	9%	1	0
Loving	0		0	0	2	0%	0	0	3	0%	0	0
McCulloch	12	0%	0	0	22	50%	0	0	35	60%	0	1
Martin	62	0%	0	0	47	0%	0	0	51	0%	0	0
Mason	32	0%	0	0	18	0%	0	0	23	0%	0	0
Menard	10	0%	0	0	4	0%	0	0	13	0%	0	0
Midland	2711	8%	0	6	2798	10%	0	7	2598	9%	0	2
Pecos	132	0%	0	0	132	0%	0	0	830	7%	3	1
Presidio	39	0%	0	0	35	0%	0	0	46	0%	0	0
Reagan	13	0%	0	0	20	0%	0	0	21	0%	0	0
Reeves	154	0%	0	0	170	0%	0	0	169	0%	0	0
Schleicher	2	0%	0	0	3	0%	0	0	3	0%	0	0
Sterling	2	0%	0	0	0		0	0	1	0%	0	0
Sutton	20	0%	0	0	20	0%	0	0	24	0%	0	0
Terrell	10	0%	0	0	7	0%	0	0	10	0%	0	0
Tom Green	1384	15%	0	0	1321	2%	0	0	1355	3%	0	1
Upton	75	8%	0	0	102	4%	0	0	99	8%	0	0
Ward	620	33%	0	1	621	32%	0	0	115	0%	0	0
Winkler	88	0%	0	0	92	0%	0	0	107	0%	0	0
<b>Total</b>	<b>19867</b>	<b>6.1%</b>	<b>3</b>	<b>53</b>	<b>20544</b>	<b>5.3%</b>	<b>1</b>	<b>58</b>	<b>19862</b>	<b>4.5%</b>	<b>5</b>	<b>37</b>

## ILI by Age Group



This chart documents the number of ILI admissions in hospitals around the region by age group from syndromic surveillance data. It excludes ILI with a confirmed COVID-19 discharge diagnosis.

## Flu-Associated Pediatric Deaths & Outbreaks

No flu-associated pediatric deaths have been reported in PHR 9/10 this flu season. In PHR 9/10, no flu outbreaks have been reported for Week 19.

**For a more comprehensive look at respiratory illnesses circulating throughout Texas, please visit: <https://www.dshs.texas.gov/2022-2023-texas-influenza-surveillance-activity> and select the "Current Extended Flu Activity Report"**