



TEXAS  
Health and Human  
Services

---

Texas Department of State  
Health Services

# Promotor(a) or Community Health Worker Training and Certification Program Advisory Committee Meeting

---

**October 27, 2023**

# Promotor(a) or Community Health Worker (CHW) Training and Certification Advisory Committee Meeting

---

## **FOR QUESTIONS AND COMMENTS:**

You may submit your questions/comments to

[CHW@dshs.texas.gov](mailto:CHW@dshs.texas.gov)

Thank you.



TEXAS  
Health and Human Services

Texas Department of State  
Health Services

# Promotor(a) or Community Health Worker (CHW) Training and Certification Advisory Committee Meeting

## AGENDA

**Friday, October 27, 2023, 10:00 A.M. – 12:35 P.M. CST**

1. Welcome and Introductions ←
2. Consideration of July 27, 2023, draft meeting minutes
3. Health Promotion and Chronic Disease Prevention Section Update
4. National Association of Community Health Workers – Unity Conference
5. Updates from the Texas Association for Promotores/Community Health Workers (CHW)
6. Updates from the South Texas Promotoras Association – Diabetes, Obesity, Nutrition, and Exercise (Get It D.O.N.E.) Conference
7. DSHS CHW Core Competencies/C3 Alignment Discussion
8. 2022 CHW Annual Report
9. Advisory subcommittee updates
10. Committee member sharing
11. Public Comment
12. Agenda items for next meeting
13. Adjourn



**TEXAS**  
Health and Human Services

Texas Department of State  
Health Services

# Promotor(a) or Community Health Worker (CHW) Training and Certification Advisory Committee Meeting

## AGENDA

**Friday, October 27, 2023, 10:00 A.M. – 12:35 P.M. CST**

1. Welcome and Introductions
2. Consideration of July 27, 2023, draft meeting minutes ←
3. Health Promotion and Chronic Disease Prevention Section Update
4. National Association of Community Health Workers – Unity Conference
5. Updates from the Texas Association for Promotores/Community Health Workers (CHW)
6. Updates from the South Texas Promotoras Association – Diabetes, Obesity, Nutrition, and Exercise (Get It D.O.N.E.) Conference
7. DSHS CHW Core Competencies/C3 Alignment Discussion
8. 2022 CHW Annual Report
9. Advisory subcommittee updates
10. Committee member sharing
11. Public Comment
12. Agenda items for next meeting
13. Adjourn




**TEXAS**  
Health and Human Services

Texas Department of State  
Health Services

# Promotor(a) or Community Health Worker (CHW) Training and Certification Advisory Committee Meeting

## AGENDA

**Friday, October 27, 2023, 10:00 A.M. – 12:35 P.M. CST**

1. Welcome and Introductions
2. Consideration of July 27, 2023, draft meeting minutes
3. Health Promotion and Chronic Disease Prevention Section Update 
4. National Association of Community Health Workers – Unity Conference
5. Updates from the Texas Association for Promotores/Community Health Workers (CHW)
6. Updates from the South Texas Promotoras Association – Diabetes, Obesity, Nutrition, and Exercise (Get It D.O.N.E.) Conference
7. DSHS CHW Core Competencies/C3 Alignment Discussion
8. 2022 CHW Annual Report
9. Advisory subcommittee updates
10. Committee member sharing
11. Public Comment
12. Agenda items for next meeting
13. Adjourn



**TEXAS**  
Health and Human Services

Texas Department of State  
Health Services

# Promotor(a) or Community Health Worker (CHW) Training and Certification Advisory Committee Meeting

## AGENDA

**Friday, October 27, 2023, 10:00 A.M. – 12:35 P.M. CST**

1. Welcome and Introductions
2. Consideration of July 27, 2023, draft meeting minutes
3. Health Promotion and Chronic Disease Prevention Section Update
4. National Association of Community Health Workers – Unity Conference
5. Updates from the Texas Association for Promotores/Community Health Workers (CHW)
6. Updates from the South Texas Promotoras Association – Diabetes, Obesity, Nutrition, and Exercise (Get It D.O.N.E.) Conference
7. DSHS CHW Core Competencies/C3 Alignment Discussion
8. 2022 CHW Annual Report
9. Advisory subcommittee updates
10. Committee member sharing
11. Public Comment
12. Agenda items for next meeting
13. Adjourn



**TEXAS**  
Health and Human Services

Texas Department of State  
Health Services



**TEXAS**  
Health and Human  
Services

# Welcome

---

**Tasha Whitaker, CHWI**

**National Association of Community Health  
Workers**

# NACHW

NATIONAL ASSOCIATION OF  
COMMUNITY HEALTH WORKERS

## 2023 Unity Conference Highlights

Texas DSHS CHW Advisory  
Committee Meeting  
Austin, TX

Tasha Whitaker  
Training & Technical Assistance  
Associate







**ABOUT  
NACHW**

# ABOUT NACHW

The National Association of Community Health Workers (NACHW) was founded in April 2019 after several years of planning and organizing by Community Health Workers (CHWs) and allies across the United States.

**VISION :** Community Health Workers united nationally to support communities in achieving health, equity and social justice.



# NACHW COMMITTEES



## Policy Committee

The Committee's mission is to engage and organize members who will work to analyze, respond to, and help shape public policy at the national, state and local level related to the Community Health Worker profession.



## Nominations Committee

The Nominations Committee (NC) is composed of members of the board of directors who are appointed to serve in this capacity.



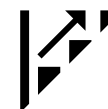
## Executive Committee

The Executive Committee oversees all aspects of NACHW Board operations and provides guidance to committee chairs.



## Development Committee

The Development Committee's purpose is to assist the Board and staff in procuring the funds necessary to achieve NACHW's mission and assuring the fiscal health of the organization.



## Workforce Committee

The Workforce Committee convenes to facilitate the exchange of resources, ideas, and models around education, capacity, and infrastructure building, economic development/ sustainability models.

Learn more about our committees [HERE](#)



# **MEMBERSHIP**

# National Community Health Worker Week Awareness Week (NCHWAW)

**Unity Conference 2023 NCHWAW Plenary Session:** A powerful panel discussion among CHWs and allies focused on: The importance of CHW workforce visibility, Experiences, resources and strategies mobilize the workforce and our allies

**\*\* AUGUST 28 – SEPTEMBER 1, 2023 \*\***

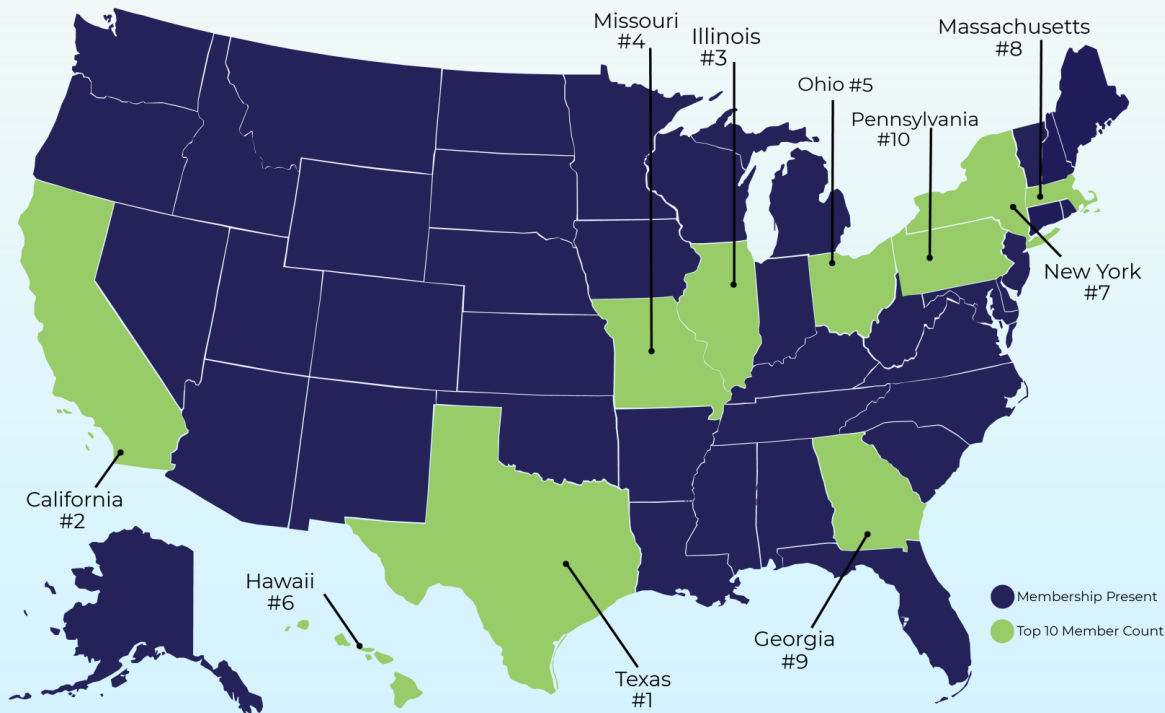
## National participation in NCHWAW:

- 78 participating organizations
- CBOs in 17 states
- 82 events, meetings, and other activities during the week
- 1 international event in Mumbai, Kenya hosted by Mahatma Gandhi Mission Institute Of Health Sciences.
- Individual CHWs & allies used the resources within the NCHWAW toolkit and sent letters to their lawmakers
- Active social media presence of CHWs & allies who shared graphics and promoted NCHWAW widely





# NATIONAL MEMBERSHIP: 50 STATES AND GROWING!

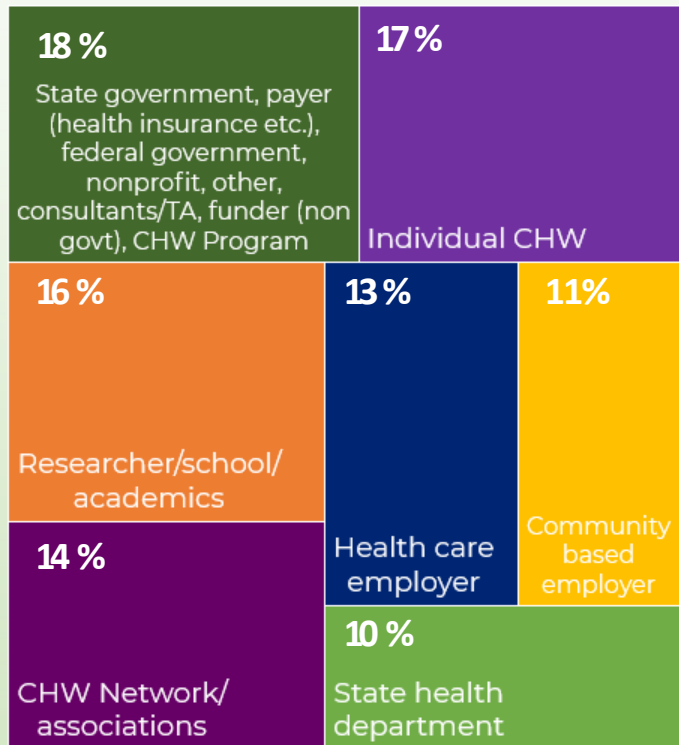


Our members (CHWs, including promotoras and community health representatives) are working across sector, ethnicity, and geography to address direct service needs of special populations as well as the upstream social determinants of health.

NACHW continues to learn about its members, using member data to better understand and serve the workforce. This data helps us tailor monthly webinars, identify relevant opportunities, and remain at the forefront of issues that pertain to CHWs.

# CHW DOCUMENT RESOURCE CENTER (DRC)

DRC USERS BY TYPE



A Database for CHW Leaders, State and Local Government Practitioners, Employers and Payers. This is the nation's largest searchable collection of documents on policies around CHWs (mainly on the state level). Documents include: reports, policy studies, meeting minutes, brochures, state legislative bills and other materials that show how state-level groups have created definitions, policies and workforce development programs for CHWs.

Visit the [DRC](#) and start searching today!

*The CHW Document Resource Center was developed in collaboration with National Association of Chronic Disease Directors (NACDD) and the Centers for Disease Control Division of Chronic Disease Prevention and Health Promotion.*

The image features a dark blue background with abstract geometric shapes in shades of brown and green. A large white diamond shape is centered on the page, outlined by a thin light blue border. Inside the white diamond, the words "Unity" and "Conference" are written in a bold, black, sans-serif font, stacked vertically.

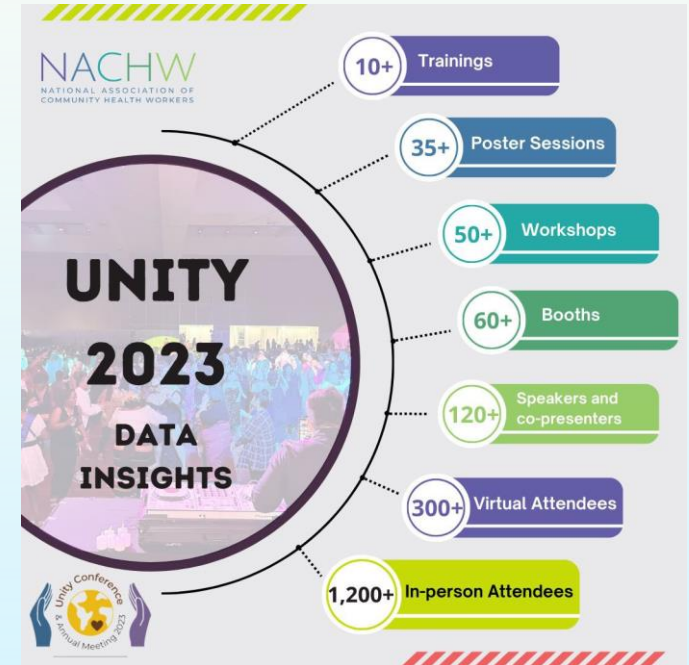
# **Unity Conference**



# UNITY CONFERENCE OVERVIEW

The annual meeting and interactive event designed for our CHW and ally members making a difference. CHWS and allies gather for keynotes, awards presentations, networking, and voting for open board positions.

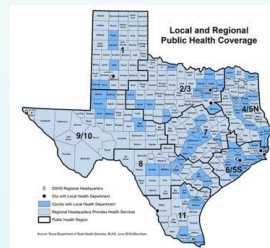
20% of Unity attendees were from Texas.



# Regional Breakout Sessions



## Texas Breakout Session



# Awards Gala

During the Unity Conference, NACHW presents deserving CHWs with Hope & Care Awards, as well as the esteemed Esther M. Holderby Award. The Hope & Care awardees are nominated by their peers.





**CONNECT  
WITH NACHW**

# PARTNER WITH US

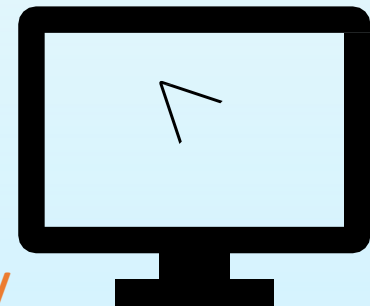


NACHW is proud to partner with many organizations across the country at the local, state, national, and federal level. When an organization reaches out for partnership, we like to have an introductory meeting with them. We look forward to partnering with organizations align with our mission, vision, values, and capacity as a young growing organization

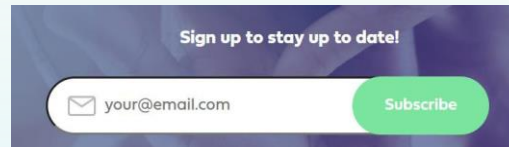
Partnerships Include:

- Invite NACHW to speak at your event
- Partner as a CHW or Ally organization
- Partner through sponsorship of our strategic objectives
- Sponsorship of the Unity Conference
- Policy review
- Much more

<https://nachw.org/partner-with-nachw/>



# GET THE LATEST NACHW NEWS



Sign up on our homepage ([www.nachw.org](http://www.nachw.org)) to receive our monthly newsletter, COVID-19 newsletter, and other communications



Follow us at @chwnational



Find us at  
[Linkedin.com/company/chwnational](https://www.linkedin.com/company/chwnational)

# Promotor(a) or Community Health Worker (CHW) Training and Certification Advisory Committee Meeting

## AGENDA

**Friday, October 27, 2023, 10:00 A.M. – 12:35 P.M. CST**

1. Welcome and Introductions
2. Consideration of July 27, 2023, draft meeting minutes
3. Health Promotion and Chronic Disease Prevention Section Update
4. National Association of Community Health Workers – Unity Conference
5. Updates from the Texas Association for Promotores/Community Health Workers (CHW) ←
6. Updates from the South Texas Promotoras Association – Diabetes, Obesity, Nutrition, and Exercise (Get It D.O.N.E.) Conference
7. DSHS CHW Core Competencies/C3 Alignment Discussion
8. 2022 CHW Annual Report
9. Advisory subcommittee updates
10. Committee member sharing
11. Public Comment
12. Agenda items for next meeting
13. Adjourn



**TEXAS**  
Health and Human Services

Texas Department of State  
Health Services



**TEXAS**  
Health and Human  
Services

---

Texas Department of State  
Health Services

# Welcome

---

**Roxana Lopez, CCHW, CCHWI**

**Texas Association of Promotores &  
Community Health Workers**





# TEXAS CHWS UNITED

Roxana Lopez, CHWI, CHW

President of the Board of Directors of Texas Association of Promotores/CHWs

# CURRENT BOARD OF DIRECTORS



2023 TAPCHW Board of Directors

# PLANNING COMMITTEE

- Starts February Every year.
- Open to CHWs and CHW Instructors (CHWIs) who are not members of TAPCHW
- Offers affordable certified continuing education to CHWs and CHWIs
- Pricing
- Scholarships



**Agenda:**

# TAPCHW CONFERENCE HIGHLIGHTS

**September 22, 2023**

**September 29, 2023**

## TAPCHW Conference Schedule at a Glance

<b>9:00-9:30 am</b>	CHW Spotlight	Watch Parties
<b>9:45-10:45 am</b>	How to work with your local ADRC/AAA	Roxana Lopez, CHWC, CHWI, CHW-TAPCHW
<b>10:50-11:50 am</b>	Psychosocial/ Cancer Basics	Elaine Gonzalez, CHWI- Breast Cancer Resource Center
<b>12:00-1:00pm</b>	Lunch	Watch Party Host
<b>1:10-2:10pm</b>	Difficult Conversations	Ashley Rodriguez, CHWI
<b>2:10-2:25pm</b>	Break/ Raffles	Watch Party Host
<b>2:30-3:30pm</b>	Disaster Preparedness	Alejandro Quijano, CHWI- UH CHW
<b>3:35-4pm</b>	Closing	Roxana Lopez, CHWC, CHWI, CHW-TAPCHW

<b>9:00-9:30 am</b>	CHW Spotlight	Watch Parties
<b>9:45-10:45 am</b>	Preparación para Desastres	Alejandro Quijano, UH CHWI
<b>10:50-11:50 am</b>	Psychosocial/ Basicos de Cancer	Elaine Gonzalez & Lizette Rangel, CHWI- Breast Cancer Resource Center
<b>12:00-1:00pm</b>	Almuerzo	Anfitriona del Watch Party
<b>1:10-3:10pm</b>	Introducción a Preparación de Desastres	Dr. Denise Hernandez, CHWI, DFW CHW
<b>3:15-4:15pm</b>	Juntos Construyamos Mentes Brillante	Cristina Palacios-Makhoul, CHWI- UH
<b>3:35-4pm</b>	Clausura	Gloria Carter, CHW, TAPCHW

# TWO OPTIONS- INTRODUCTIONS TO WATCH PARTIES

## **Virtual**

- Able to join while at work
- No time off
- Represent agency, association etc.

## **Watch Party**

- Able to network locally
- Gather together for some normalcy
- Represent agency, association, etc.
- Self Care- Take time

# TWO OPTIONS- INTRODUCTIONS TO WATCH PARTIES



# REASONING

- Yearly Conferences
- Make it affordable for all
- Collaborations and partnerships for CHWs and CHWIs

## **9/22/2023 - ATTENDEES**

- Virtual – 31
- Fort Worth- 7
- Austin- Community Care- 3
- Lubbock- 16
- Victoria- 5
- UTHSCSA – San Antonio- 5



## **9/29/2023 - ATTENDEES**

- Virtual- 11
- San Benito- 4
- Trust CHW- 18

## **NEXT YEAR!**

- Houston, Texas!
- September 2024!
- Looking for Topics and Instructors!

# AFFILIATE INSTRUCTORS

## Training Center Requests

The TAPCHW Training Center offers a variety of options for individual CHW Instructors and community organizations to engage in educational development opportunities with CHWs. Complete the appropriate request form to connect with us. One of our training center coordinators will contact you within 7-10 business days.

We look forward to working with you!



### Curriculum Development

Complete this request form if you or your organization is interested in collaborating with TAPCHW to develop a NEW training curriculum for CHWs and/or CHW Instructors.



### Training for TAPCHW Members

Complete this request form if you or your organization is interested in providing a training to TAPCHW members.



### Training for Organizations

Complete this request form if you or your organization is interested in TAPCHW providing a training to your organization or team of CHWs.

# WHAT TO EXPECT WHEN APPLYING FOR THE BOARD OF DIRECTORS

- Application
- Interview
- Onboarding Training
- Required
  - Participate in monthly meeting
  - 1 Committee
  - Represent TAPCHW in area
  - Ownership of tasks

# WHAT TO EXPECT WHEN APPLYING FOR THE BOARD OF DIRECTORS

- Application
- Interview
- Onboarding Training
- Required
  - Participate in monthly meeting
  - 1 Committee
  - Represent TAPCHW in area
  - Ownership of tasks

# **BENEFITS OF JOINING TAPCHW**

- Build your Skills
- Networking
- Representation
- Mentoring opportunities

**THANK YOU!**

Roxana Lopez, CHWI,  
CHW


President of the  
TAPCHW Board of  
Directors



# Promotor(a) or Community Health Worker (CHW) Training and Certification Advisory Committee Meeting

## AGENDA

**Friday, October 27, 2023, 10:00 A.M. – 12:35 P.M. CST**

1. Welcome and Introductions
2. Consideration of July 27, 2023, draft meeting minutes
3. Health Promotion and Chronic Disease Prevention Section Update
4. National Association of Community Health Workers – Unity Conference
5. Updates from the Texas Association for Promotores/Community Health Workers (CHW)
6. Updates from the South Texas Promotoras Association – Diabetes, Obesity, Nutrition, and Exercise (Get It D.O.N.E.) Conference 
7. DSHS CHW Core Competencies/C3 Alignment Discussion
8. 2022 CHW Annual Report
9. Advisory subcommittee updates
10. Committee member sharing
11. Public Comment
12. Agenda items for next meeting
13. Adjourn



**TEXAS**  
Health and Human Services

Texas Department of State  
Health Services





**TEXAS**  
Health and Human  
Services

# Welcome

---

**Otila Garcia, CHW**

**South Texas Promotores Association/  
Community Health Workers**



SOUTH TEXAS  
PROMOTORES  
Assoc., Inc. & Your Texas Benefits Navigators

*Promotores en Acción y Prevención*

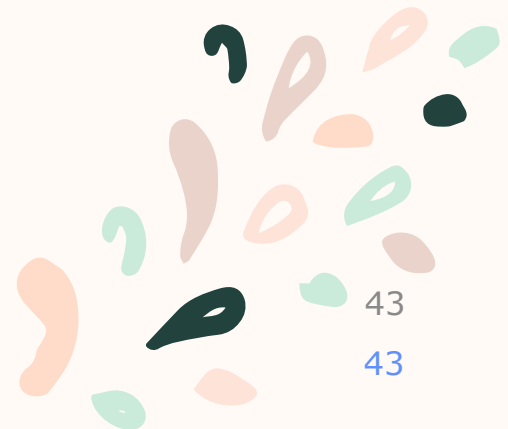
# Get It D.O.N.E.

South Padre Island, TX  
October 1-2, 2023

Get It Diabetes, Obesity, Nutrition, and Exercise (D.O.N.E)  
Conference



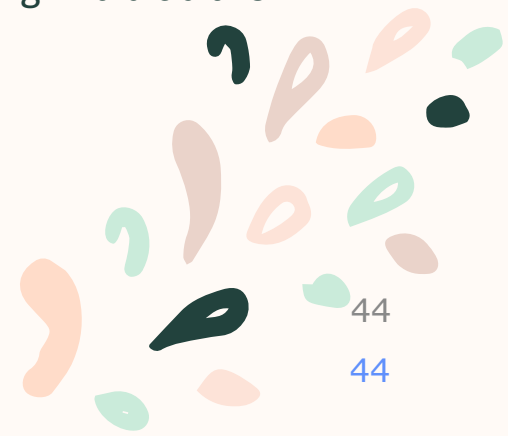
- Get It D.O.N.E. Annual Conference addresses Diabetes and Obesity prevention and management.
- The benefit from attending the conference comes from being introduced to new concepts and intervention practices that help Promotores de Salud/CHWs to be more efficient and effective in their role as health educators and agents of change.



# Conference Goals

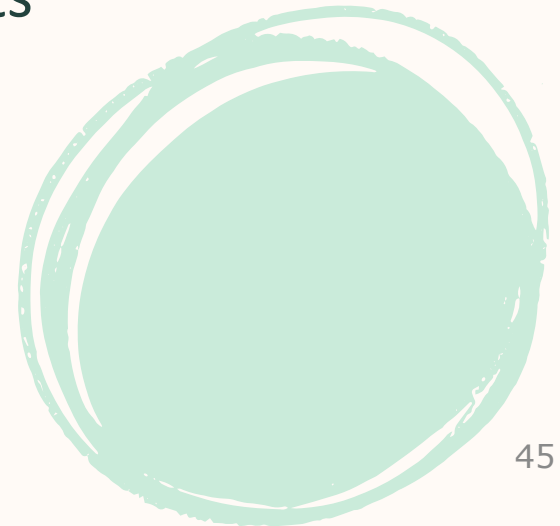


1. Improve communication among professionals and Promotores de Salud/CHWs in regards to prevention and management strategies for Diabetes and Obesity.
2. Identify community resources that support the prevention and management of Diabetes and Obesity.
3. Develop a support network between Promotores de Salud/CHWs to create stronger health community interventions.
4. Provide Promotores de Salud/CHWs and Instructors with professional development opportunities and receive Continuing Education Credits.





- Topics - Immunizations, Interpersonal and Intercultural Communication, Emotional Intelligence, and Heart Disease and Stroke Prevention.
- 220 participants





Partnerships - Gateway Community Health Center, Inc., Pfizer, Guajira Clinic, and Texas A&M School of Public Health at College Station



# “Breast Cancer Walk”

TOGETHER WE ARE  
**STRONG**



*Promotoras*





SOUTH TEXAS  
**PROMOTORES**  
Assoc., Inc. & Your Texas Benefits Navigators

*Promotores en Acción y Prevención*

# Get It D.O.N.E. Conference 2024

October 5-6, 2024

South Padre Island, TX





# Thank you!

## Contact Information

**Webpage:** [Souttexaspromotores.org](http://Souttexaspromotores.org)

**Email:** [stpaevents@outlook.com](mailto:stpaevents@outlook.com)

**Facebook:** [stpaa promotora state certified](#)

# Promotor(a) or Community Health Worker (CHW) Training and Certification Advisory Committee Meeting

## AGENDA

**Friday, October 27, 2023, 10:00 A.M. – 12:35 P.M. CST**

1. Welcome and Introductions
2. Consideration of July 27, 2023, draft meeting minutes
3. Health Promotion and Chronic Disease Prevention Section Update
4. National Association of Community Health Workers – Unity Conference
5. Updates from the Texas Association for Promotores/Community Health Workers (CHW)
6. Updates from the South Texas Promotoras Association – Diabetes, Obesity, Nutrition, and Exercise (Get It D.O.N.E.) Conference
7. DSHS CHW Core Competencies/C3 Alignment Discussion ←
8. 2022 CHW Annual Report
9. Advisory subcommittee updates
10. Committee member sharing
11. Public Comment
12. Agenda items for next meeting
13. Adjourn



**TEXAS**  
Health and Human Services

Texas Department of State  
Health Services



**TEXAS**  
Health and Human  
Services

# Welcome

---

**Ashley Rodriguez, CHWI**

**Texas Association for Pomortoras and  
Community Health Workers**

# Proposal to Align DSHS CHW Core Competencies with C3

Ashley Rodriguez

CHW Advisory Committee Meeting

October 27, 2023

# Background

- Texas adopted DSHS CHW Core Competencies in 2001
- The Community Health Worker Core Consensus Project (referred to as the C3 Project) built upon the Texas CHW core competencies and the rich history of the Community Health Worker (CHW) workforce in the United States, with the primary aims to:
  - 1) expand cohesion in the CHW field;
  - 2) contribute to the visibility and greater understanding of the full potential of CHWs to improve health, community development, and access to systems of care.
- Across the US, the C3 Core Competencies are being adopted by multiple states
- Texas could enact a similar approach to align with the workforce nationally.

# Ad-hoc Workgroup/Stakeholders

Stakeholders involved in this work include:

- Roxana Lopez, the President of the Board of Directors of the Texas Association of Promotores & Community Health Workers (TAPCHW)
- Kim Bush, Program Director at The University of Texas Health Science Center at Tyler (former DSHS CHW Advisory Committee leader)
- Ashley Rodriguez, a CHW representative from Region 2/3 , Committee Chair, and Workforce Development chair of the DSHS CHW Advisory Committee
- Dr. Julie St. John, a researcher with the C3 project and Associate Professor, Texas Tech University Health Sciences Center.

# DSHS CHW Core Competencies & C3 CHW Core Competencies + Roles at a Glance

C3 Core CHW Competencies
1. Communication Skills
2. Interpersonal and Relationship-Building Skills
3. Service Coordination and Navigation Skills
4. Capacity Building Skills
5. Advocacy Skills
6. Education and Facilitation Skills
7. Individual and Community Assessment Skills
8. Outreach Skills
9. Professional Skills and Conduct
10. Evaluation and Research Skills
11. Knowledge Base

Source: <https://www.c3project.org/roles-competencies>

C3 Core CHW Roles
1. Cultural Mediation Among Individuals, Communities, and Health and Social Service Systems
2. Providing Culturally Appropriate Health Education and Information
3. Care Coordination, Case Management, and System Navigation
4. Providing Coaching and Social Support
5. Advocating for Individuals and Communities
6. Building Individual and Community Capacity
7. Providing Direct Service
8. Implementing Individual and Community Assessments
9. Conducting Outreach
10. Participating in Evaluation and Research

Source: <https://www.c3project.org/roles-competencies>

DSHS Core CHW Competencies
1. Communication Skill
2. Interpersonal Skill
3. Service Coordination Skill
4. Capacity-Building Skills
5. Advocacy Skills
6. Teaching Skills
7. Organizational Skills
8. Knowledge Base on Specific Health Issue

# The Proposal

- This stakeholder group proposes to **align** some of the **language** of the DSHS core competencies for CHWs and CHW Instructors with key C3 Project roles and competencies.
- The following is a high-level overview of the proposed changes:
  - Expand “Interpersonal Skills” to “Interpersonal Skills **and Relationship-Building**” and minor edits to sub skill descriptions.
  - Expand “Service Coordination Skills” to “Service Coordination Skills **and Navigation**” and add minor edits to sub skill descriptions.
  - Expand “Teaching” to “**Teaching and Education**” and minor edits to sub skill descriptions.
  - Add one new competency for “**Evaluation and Research**” - *DSHS does not currently have this competency.*



# Additional Considerations

- The Plan: work with additional CHW stakeholders across Texas to gain feedback. Stakeholders will include, *but are not limited to*:
  - Other DSHS Advisory Committee Members;
  - Local CHW Associations in Texas;
  - Individual CHWs/Promotores
- Work with stakeholders to build an accompanying **free of charge** certification module.
- Build a comprehensive change management timeline, communications plan, and provide technical support to CHW training centers across the state to accommodate the changes and potentially newly added competency.

# Today's Ask of the DSHS Advisory Committee

- Feedback on this ad-hoc subcommittee's proposal
- Develop a formal recommendation to DSHS to be discussed and voted on during the next Committee meeting in April 2024.

# Promotor(a) or Community Health Worker (CHW) Training and Certification Advisory Committee Meeting

## AGENDA

**Friday, October 27, 2023, 10:00 A.M. – 12:35 P.M. CST**

1. Welcome and Introductions
2. Consideration of July 27, 2023, draft meeting minutes
3. Health Promotion and Chronic Disease Prevention Section Update
4. National Association of Community Health Workers – Unity Conference
5. Updates from the Texas Association for Promotores/Community Health Workers (CHW)
6. Updates from the South Texas Promotoras Association – Diabetes, Obesity, Nutrition, and Exercise (Get It D.O.N.E.) Conference
7. DSHS CHW Core Competencies/C3 Alignment Discussion
8. 2022 CHW Annual Report ←
9. Advisory subcommittee updates
10. Committee member sharing
11. Public Comment
12. Agenda items for next meeting
13. Adjourn



**TEXAS**  
Health and Human Services

Texas Department of State  
Health Services



**TEXAS**  
Health and Human  
Services

# Welcome

---

**Raiza Ruiz, Community Health Worker &  
School Health program manager  
Department of State Health Services**

# **Promotor(a) or Community Health Worker Training and Certification Program 2022 Annual Report**

**Raiza Ruiz, MPA, CPM**

**Community Health Worker and School Health Branch Manager**

**Community Health Worker (CHW) Advisory Committee**

**October 27, 2023**

# Presentation Overview

- Background
- Program Milestones and Outcomes
  - Certified Community Health Workers (CHWs)
  - Certified CHW Instructors (CHWIs)
  - Certified CHW Training Programs
- Community mapping for CHWs and CHWIs
- Conclusion

# Background

- In 2001, Texas became the first state to establish statewide training and credentialing standards for CHWs.
- DSHS oversees the development and implementation of certification standards, guidelines, and requirements for CHWs.
  - Mandated by [Health and Safety Code, Chapter 48](#)
- To evaluate program implementation, the CHW Program tracks the following:
  - Number of newly certified CHWs and CHWIs
  - Total number of CHWs
  - CHWs and CHWIs demographics
  - Rate of CHWs and CHWIs certification renewals
  - Number of certified training programs
  - Number of certified continuing education courses
  - Location of certified CHWs, CHWIs and training programs in Texas

# Certified CHWs

Milestones and Outcomes





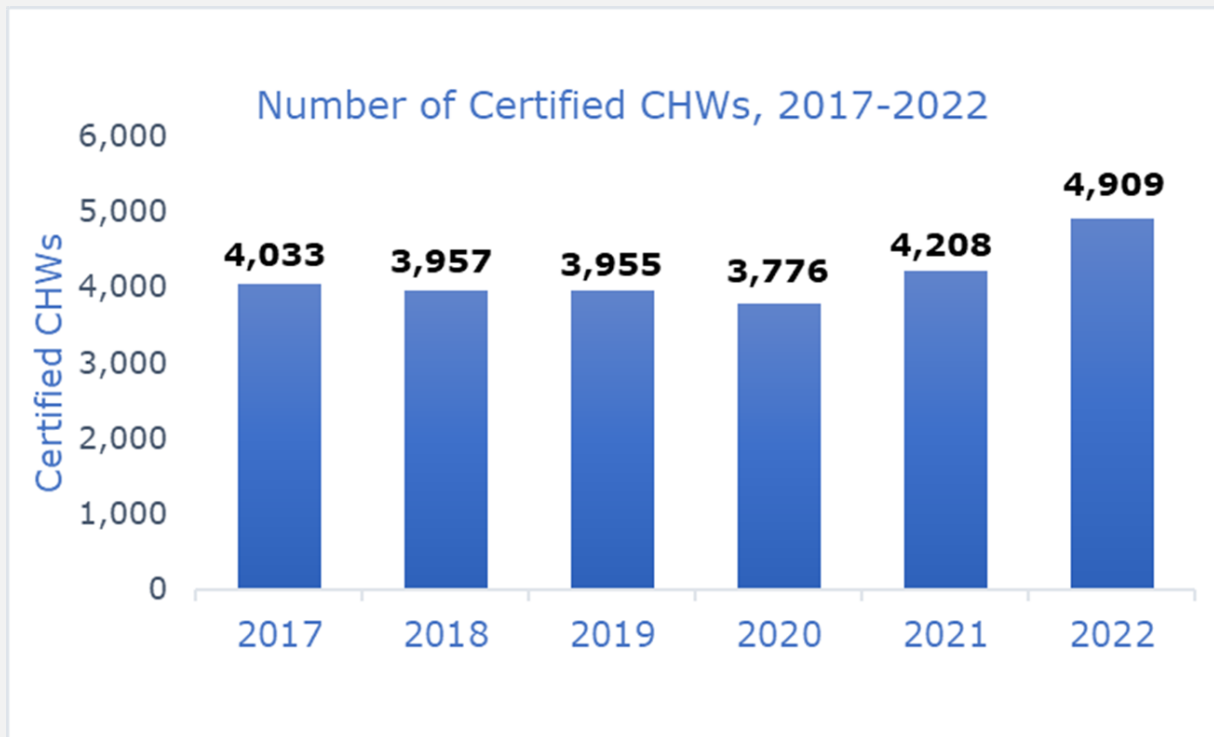
# CHW Certification

- CHW certification is received through:
  - Successful completion of a DSHS core competency certification course of at least 160 hours
  - Verification of at least 1,000 hours of community health worker experience demonstrating proficiency in the eight core competencies in the past three years.

# Core Competencies

- CHWs have skills in the following eight core competencies:
  - Communication
  - Interpersonal skills
  - Service coordination
  - Capacity building
  - Advocacy
  - Teaching
  - Organizational skills
  - Knowledge base in specific health issues

# Number of Certified CHWs, 2017-2022



# CHWs Newly Certified

CHW Certification	2021 (%)	2022 (%)
Experience	508 (39%)	608 (42%)
CHW Certification Course	779 (61%)	849 (58%)
<b>Total</b>	<b>1,287 (100%)</b>	<b>1,457 (100%)</b>

Training programs graduated 1,462 individuals in 2022

- 62 percent increase from 2021 (897 graduates).
- These graduates were eligible to apply for CHW certification.



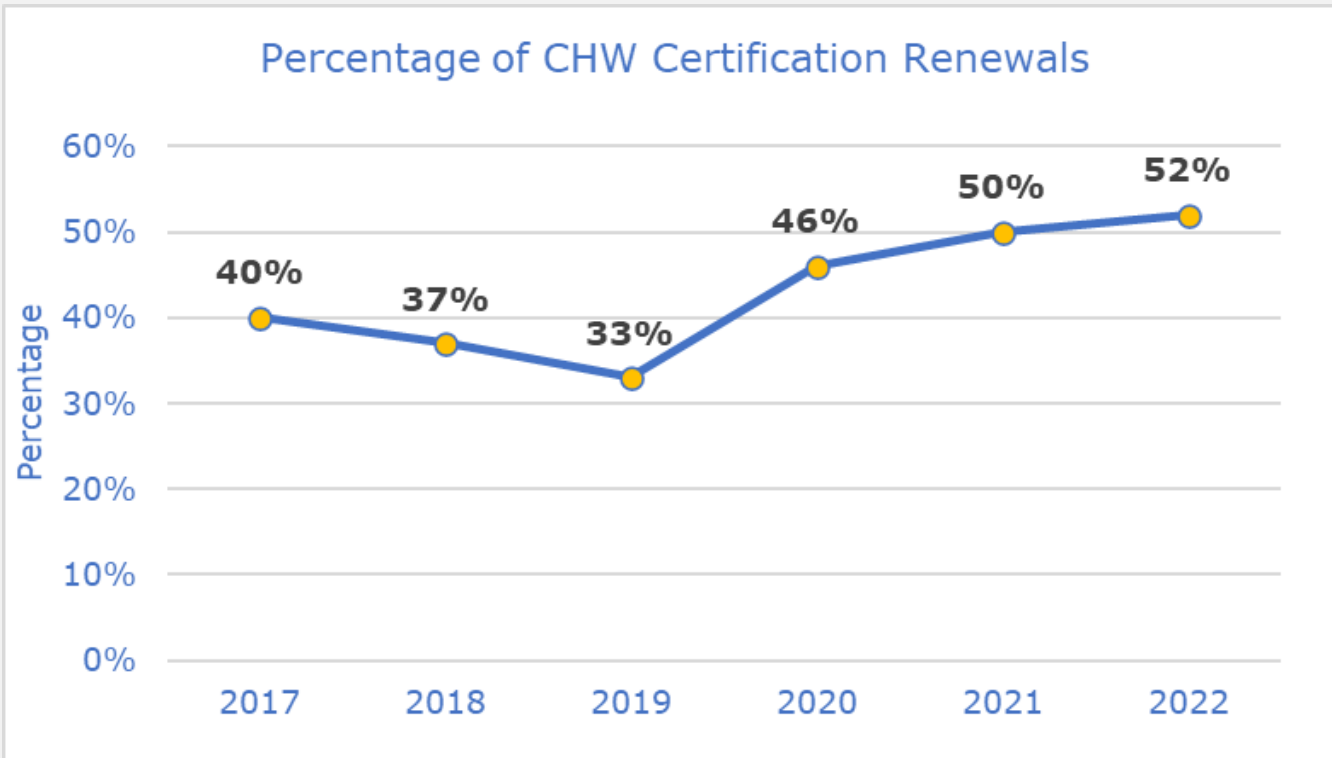
# Certified CHW Demographics

Race/Ethnicity	Female	Male	Total	Total Percentage
Hispanic	2,674	301	2,975	61%
Black	991	115	1106	23%
White	466	83	549	11%
Asian	186	30	216	4%
American Indian/Alaska Native	11	3	14	(<1%)
Native Hawaiian/Pacific Islander	1	0	1	(<1%)
Other	45	3	48	1%
<b>Total</b>	<b>4,374</b>	<b>435</b>	<b>4,909</b>	<b>100%</b>

# CHW Certification Renewals

- CHWs must renew their DSHS certification every two years. To renew, CHWs must submit:
  - A complete renewal application provided by the department
  - A current color photo that clearly shows all facial features
  - Proof of completion of the required 20 continuing education hours, including ten hours of DSHS-certified CEUs for CHWs

# CHW Renewal Rates, 2017-2022



# Certified CHWIs

Milestones and Outcomes

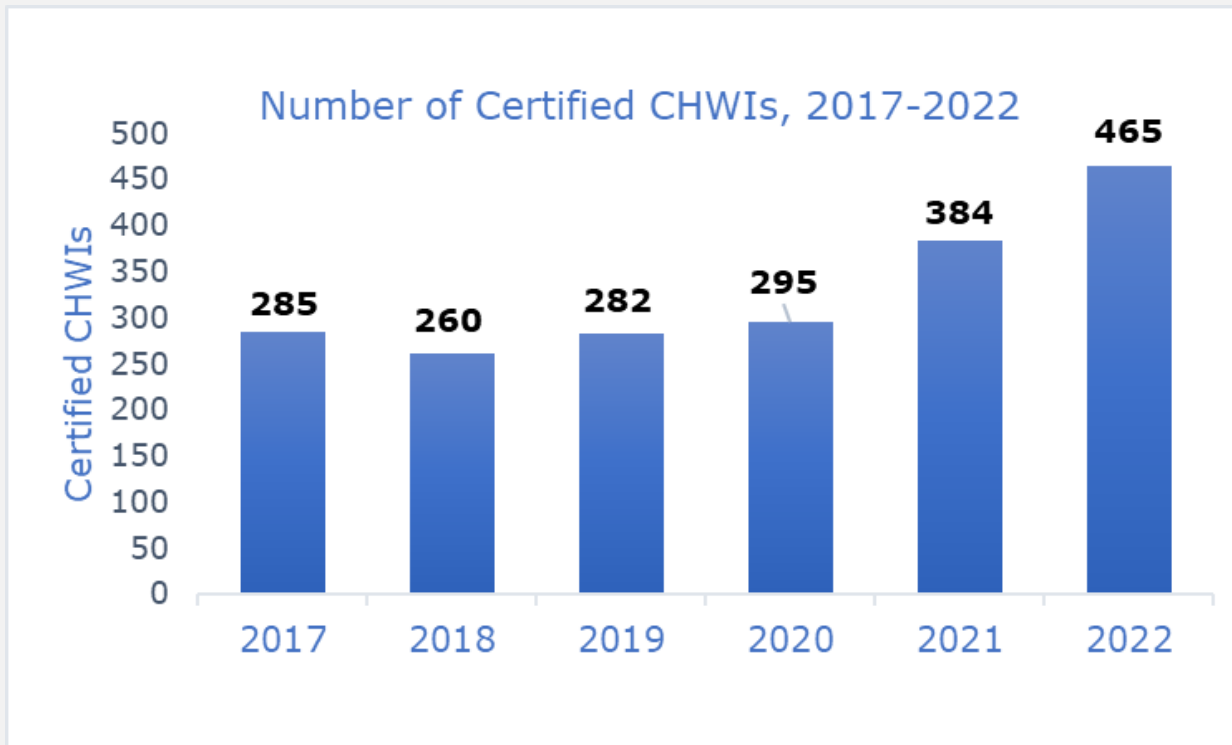




# CHWI Certification

- CHWIs can become certified in Texas in two ways:
  - By completing a certification course of at least 160 hours; or
  - Based on experience through verification of at least 1,000 hours of providing training to CHWs or other health care professionals and paraprofessionals in the last three years.

# Number of Certified CHWIs, 2017-2022



# CHWI Newly Certified

CHWI Certification	2021	2022
Experience	35 (30%)	50 (36%)
Training	81 (70%)	90 (64%)
<b>Total</b>	<b>116 (100)</b>	<b>140 (100%)</b>



87 individuals graduated from a CHWI initial certification course

- 32 percent from the 66 individuals that graduated in 2021
- These graduates were eligible to apply for CHWI certification.

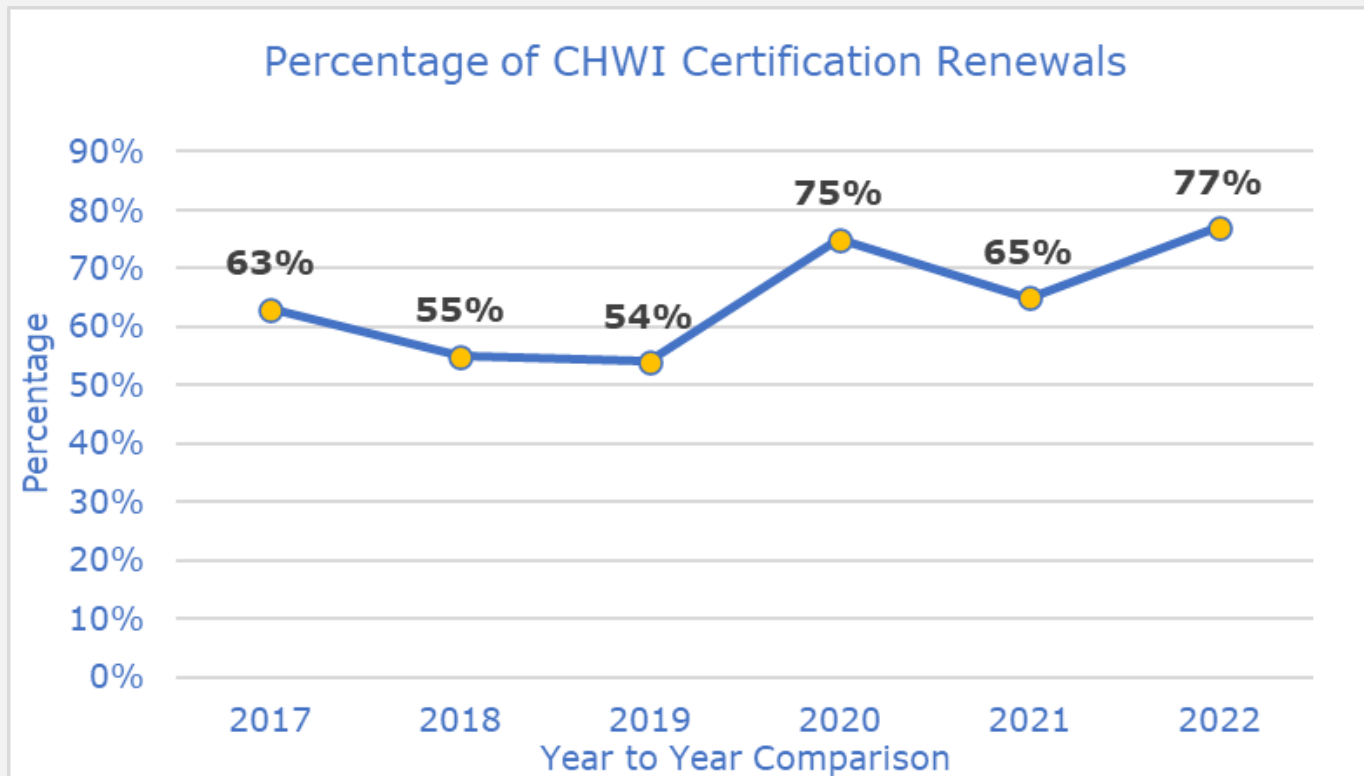
# Certified CHWI Demographics

Race/Ethnicity	Male	Female	Totals	Total Percentage
Hispanic	197	30	227	49%
Black	102	13	115	25%
White	98	11	109	23%
Asian	8	0	8	2%
American Indian/ Alaska Native	2	0	2	(<1%)
Native Hawaiian/ Pacific Islander	0	0	0	(<1%)
Other	4	0	4	1%
Totals	411	54	465	100%

# CHWI Renewals

- CHWIs must renew their DSHS certification every two years. To renew, they must submit:
  - A renewal application within one year of their certification's expiration date;
  - A current photo, in color, that clearly shows all facial features; and
  - Documents showing completion of 20 hours of continuing education, including ten hours of DSHS certified CEUs for CHWIs.

# CHWI Renewal Rates, 2017-2022



# Certified CHW Training Programs

Milestones and Outcomes



# Certified Training Programs

- Certified training programs are organizations approved by DSHS to provide training for certified CHWs and CHWIs.
- Certified training programs include:
  - Community colleges
  - Health science centers
  - Area Health Education centers
  - Federally Qualified Health Centers
  - Regional CHW associations
  - Community-based programs



*A list of approved certified training programs is available on the DSHS CHW Program website.*



# Type of Training Delivered by Certified Training Programs

Type of Approved Training	# of Training Programs
CHW Certification Initial Training Course and Certified CHW Continuing Education: Initial and Continuation Education courses	18
CHW Certification Initial Training Course and CHW and CHWI Certified Continuing Education	7
CHW and CHWI: Initial and Continuation Education courses	7
Certified CHW Continuing Education Only	9
Certified CHW and CHWI Continuing Education Only	10
<b>Total</b>	<b>51</b>

# Continuing Education for CHWs

- In 2022, certified training programs provided 310 continuing education (CE) opportunities for CHWs
  - These CE opportunities totaled 900 DSHS-certified hours in the form of in-person classes and distance learning.
- Trainings occurred in-person in 15 counties and through distance learning.
- Over 15,100 unduplicated participants attended DSHS-approved continuing education.
  - This total includes non-certified CHWs, CHWs with expired certification and professionals in fields whose work closely align with the work of CHWs.

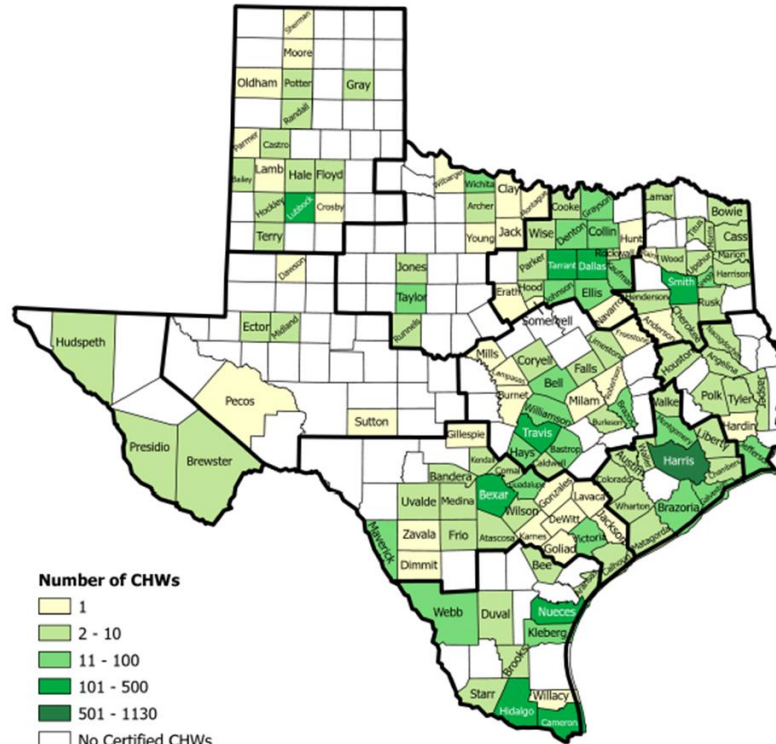
# Continuing Education for CHWIs

- Certified training programs provided 87 in-person and distance learning continuing education opportunities for CHWIs
  - These CE opportunities totaled 290 CHWI continuing education hours.
- 820 certified CHWIs attended these courses
  - This total includes CHWIs whose certifications expired and CHWIs who completed multiple in-person and distance learning continuing education courses for CHWIs.

# Community Mapping



## Certified CHWs by County of Residence



Data as of January 2023.

**Data Source:** Community Health Worker Training and Certification Program, Community Health and Wellness Branch, Health Promotion and Chronic Disease Prevention Section, Texas Department of State Health Services.

**Created by:** Chronic Disease Epidemiology Branch, 04/2023



Texas Department of State Health Services



Texas Department of State Health Services



# Summary

- The number of CHWs and CHWIs in Texas increased in 2022.
  - In 2021, Texas had 4,208 CHWs; by the end of 2022, the total increased by 17 percent to 4,909.
  - In 2021, Texas had 384 CHWIs; by the end of 2022 the total increased by 21 percent to 465.
- The CHW Program continues to collaborate with state-level organizations to increase and promote job opportunities, continuing education and training opportunities with CHWs in all regions of Texas.
- The Texas CHW workforce continues to strengthen and grow as a result these efforts.

# Reference

[Promotor\(a\) or Community Health Worker Training and Certification Program 2022 Annual Report](#). Prepared by the Community Health Worker Training and Certification Program, Health Promotion and Chronic Disease Prevention Section, Texas Department of State Health Services.



# Thank you!

Promotor(a) or Community Health Worker Training and Certification Program  
2022 Annual Report

Email: [chw@dshs.texas.gov](mailto:chw@dshs.texas.gov)

Phone: 512-776-2570

# Promotor(a) or Community Health Worker (CHW) Training and Certification Advisory Committee Meeting

## AGENDA

**Friday, October 27, 2023, 10:00 A.M. – 12:35 P.M. CST**

1. Welcome and Introductions
2. Consideration of July 27, 2023, draft meeting minutes
3. Health Promotion and Chronic Disease Prevention Section Update
4. National Association of Community Health Workers – Unity Conference
5. Updates from the Texas Association for Promotores/Community Health Workers (CHW)
6. Updates from the South Texas Promotoras Association – Diabetes, Obesity, Nutrition, and Exercise (Get It D.O.N.E.) Conference
7. DSHS CHW Core Competencies/C3 Alignment Discussion
8. 2022 CHW Annual Report
9. Advisory subcommittee updates ←
10. Committee member sharing
11. Public Comment
12. Agenda items for next meeting
13. Adjourn



**TEXAS**  
Health and Human Services

Texas Department of State  
Health Services

# Workforce Solutions and Employment Opportunities Sub-Committee



TEXAS  
Health and Human  
Services

Texas Department of State  
Health Services

<b>Chair</b>	<b>Ashley Rodriguez</b>
Membership (advisory member):	Marlen Ramirez
Membership (non-advisory members):	Julie St. John, MA, MPH

- Sub-Committee update

**Next meeting: To be determined**

# Communication and Outreach



TEXAS  
Health and Human  
Services

Texas Department of State  
Health Services

<b>Chair</b>	<b>Jessica Arriola</b>
Membership (advisory member):	Jose Rucobo
Membership (non-advisory members):	Vacant

- Sub-Committee update

**Next meeting: To be determined**

# CHW Training and Certification Sub-Committee



TEXAS  
Health and Human  
Services

Texas Department of State  
Health Services

<b>Chair</b>	<b>Carolina González Schlenker, MD, MPH</b>
Membership (advisory members):	Minerva Garcia and Otila Garcia
Membership (non-advisory members):	Merida Escobar

- Sub-Committee update

**Next meeting: To be determined**

# Rules Sub-Committee



TEXAS  
Health and Human  
Services

Texas Department of State  
Health Services

<b>Chair</b>	<b>Ms. Otila Garcia, CHW</b>
Membership (advisory members):	Jessica Arriola
Membership (non-advisory members):	Dr. Carolina Gonzalez-Schlenker and Merida Escobar

- Sub-Committee update

**Next meeting: To be determined**

# Promotor(a) or Community Health Worker (CHW) Training and Certification Advisory Committee Meeting

## AGENDA

**Friday, October 27, 2023, 10:00 A.M. – 12:35 P.M. CST**

1. Welcome and Introductions
2. Consideration of July 27, 2023, draft meeting minutes
3. Health Promotion and Chronic Disease Prevention Section Update
4. National Association of Community Health Workers – Unity Conference
5. Updates from the Texas Association for Promotores/Community Health Workers (CHW)
6. Updates from the South Texas Promotoras Association – Diabetes, Obesity, Nutrition, and Exercise (Get It D.O.N.E.) Conference
7. DSHS CHW Core Competencies/C3 Alignment Discussion
8. 2022 CHW Annual Report
9. Advisory subcommittee updates
10. Committee member sharing ←
11. Public Comment
12. Agenda items for next meeting
13. Adjourn



TEXAS  
Health and Human Services

Texas Department of State  
Health Services

# Promotor(a) or Community Health Worker (CHW) Training and Certification Advisory Committee Meeting

## AGENDA

**Friday, October 27, 2023, 10:00 A.M. – 12:35 P.M. CST**

1. Welcome and Introductions
2. Consideration of July 27, 2023, draft meeting minutes
3. Health Promotion and Chronic Disease Prevention Section Update
4. National Association of Community Health Workers – Unity Conference
5. Updates from the Texas Association for Promotores/Community Health Workers (CHW)
6. Updates from the South Texas Promotoras Association – Diabetes, Obesity, Nutrition, and Exercise (Get It D.O.N.E.) Conference
7. DSHS CHW Core Competencies/C3 Alignment Discussion
8. 2022 CHW Annual Report
9. Advisory subcommittee updates
10. Committee member sharing
11. Public Comment ←
12. Agenda items for next meeting
13. Adjourn



**TEXAS**  
Health and Human Services

Texas Department of State  
Health Services



# Public Comment Procedures

---



TEXAS

Health and Human Services

Texas Department of State  
Health Services

- All speakers must identify themselves and the organization they are representing before speaking
- Three-minute time limit
- Do not include health or other confidential information
- Rules of conduct apply to public comments made

# Promotor(a) or Community Health Worker (CHW) Training and Certification Advisory Committee Meeting

## AGENDA

**Friday, October 27, 2023, 10:00 A.M. – 12:35 P.M. CST**

1. Welcome and Introductions
2. Consideration of July 27, 2023, draft meeting minutes
3. Health Promotion and Chronic Disease Prevention Section Update
4. National Association of Community Health Workers – Unity Conference
5. Updates from the Texas Association for Promotores/Community Health Workers (CHW)
6. Updates from the South Texas Promotoras Association – Diabetes, Obesity, Nutrition, and Exercise (Get It D.O.N.E.) Conference
7. DSHS CHW Core Competencies/C3 Alignment Discussion
8. 2022 CHW Annual Report
9. Advisory subcommittee updates
10. Committee member sharing
11. Public Comment
12. Agenda items for next meeting ←
13. Adjourn



**TEXAS**  
Health and Human Services

Texas Department of State  
Health Services

# Promotor(a) or Community Health Worker (CHW) Training and Certification Advisory Committee Meeting

## AGENDA

**Friday, October 27, 2023, 10:00 A.M. – 12:35 P.M. CST**

1. Welcome and Introductions
2. Consideration of July 27, 2023, draft meeting minutes
3. Health Promotion and Chronic Disease Prevention Section Update
4. National Association of Community Health Workers – Unity Conference
5. Updates from the Texas Association for Promotores/Community Health Workers (CHW)
6. Updates from the South Texas Promotoras Association – Diabetes, Obesity, Nutrition, and Exercise (Get It D.O.N.E.) Conference
7. DSHS CHW Core Competencies/C3 Alignment Discussion
8. 2022 CHW Annual Report
9. Advisory subcommittee updates
10. Committee member sharing
11. Public Comment
12. Agenda items for next meeting
13. Adjourn ←



**TEXAS**  
Health and Human Services

Texas Department of State  
Health Services



**TEXAS**  
Health and Human  
Services

---

Texas Department of State  
Health Services

# Thank you

---

**[chw@dshs.texas.gov](mailto:chw@dshs.texas.gov)**