



DSHS Arbovirus Activity Report
Week #23 (ending June 6, 2014)
Report Date: June 10, 2014

Table 1. Arbovirus Activity Summary, Texas, Weeks 1-23

Virus	Mosquito			Avian	Equine	Human						TOTAL
	DSHS Lab Reports	Non-DSHS Lab Reports	TOTAL (MOSQUITO)			Fever	Neuroinvasive	Hemorrhagic Fever	TOTAL (HUMAN)	Deaths	PVD‡	
DENV*						4			4			4
EEEV												0
SLEV												0
WNV		3	3									3
TOTAL REPORTS	0	3	3	0	0	4	0	0	4	0		7

DENV - Dengue virus

EEEV - Eastern Equine Encephalitis Virus

SLEV - Saint Louis Encephalitis Virus

WNV - West Nile Virus

*All reported cases of Dengue are imported.

‡PVD - Presumptive viremic blood donors are people who had no symptoms at the time of donating blood through a blood collection agency, but whose blood tested positive when screened for the presence of WNV. Unless they meet the case reporting criteria, they are not counted as a case for official reporting purposes and are not included in the "total reports" column.

Table 2. Arbovirus Activity Reported by County, Weeks 1-23

County	DENV*		EEEV			SLEV		WNV							COUNTY TOTAL**		
	M	H	M	E	H	M	H	M	A	E	H						
											Fever	Neuroinvasive	PVD‡	TOTAL		Deaths	
Dallas								2									2
El Paso		1															1
Harris		1						1									2
Nueces		1															1
Travis		1															1
Total Number of Reports		4						3									7

M - mosquito A-avian E-equine H- human

*All reported cases of Dengue are imported.

‡Presumptive viremic blood donors (PVDs) are not included in any of the "total columns".

**Total may not equal the sum of the contributing subtotals because some counties will have reports from multiple species and/or for multiple diseases or disease syndromes.

Figure 1. Texas Counties Reporting any WNV Activity, Weeks 1-23

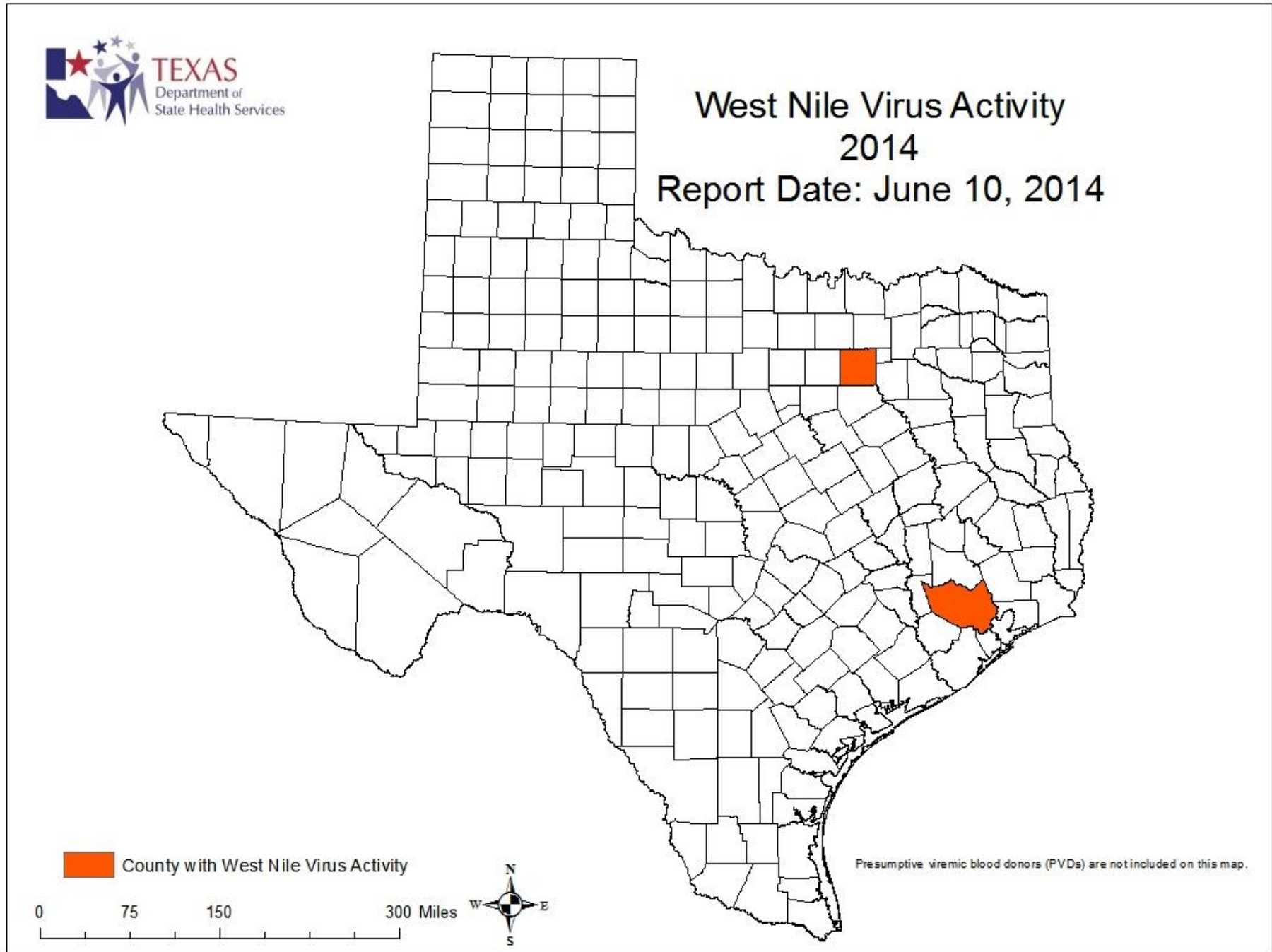
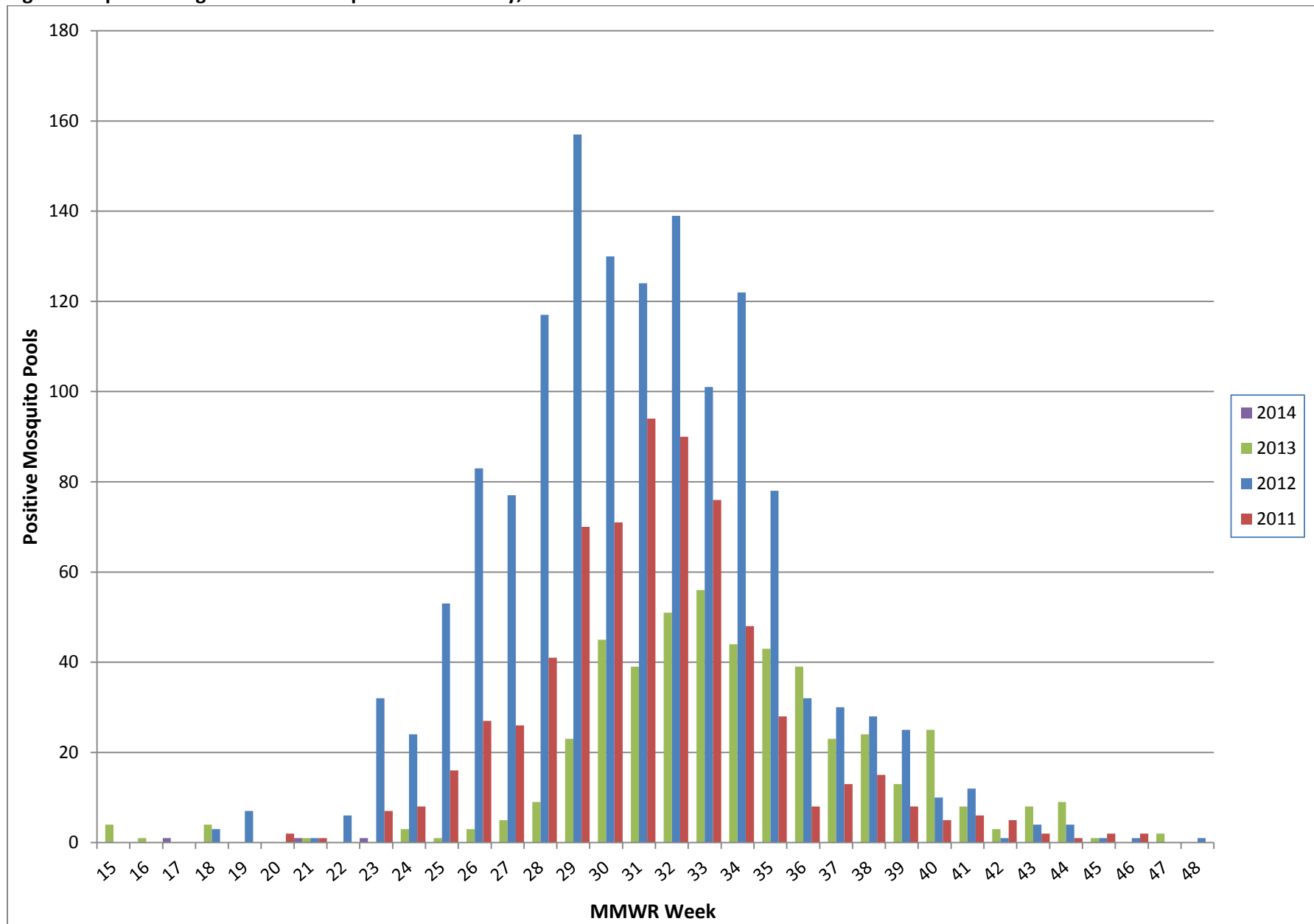


Figure 2. Epidemiologic Curve of Mosquito WNV Activity, 2011-2014



For more detailed information about arboviruses found in Texas, please visit <http://www.dshs.state.tx.us/idcu/disease/arboviral/>.