



**TEXAS**  
Health and Human  
Services

**Texas Department of State  
Health Services**



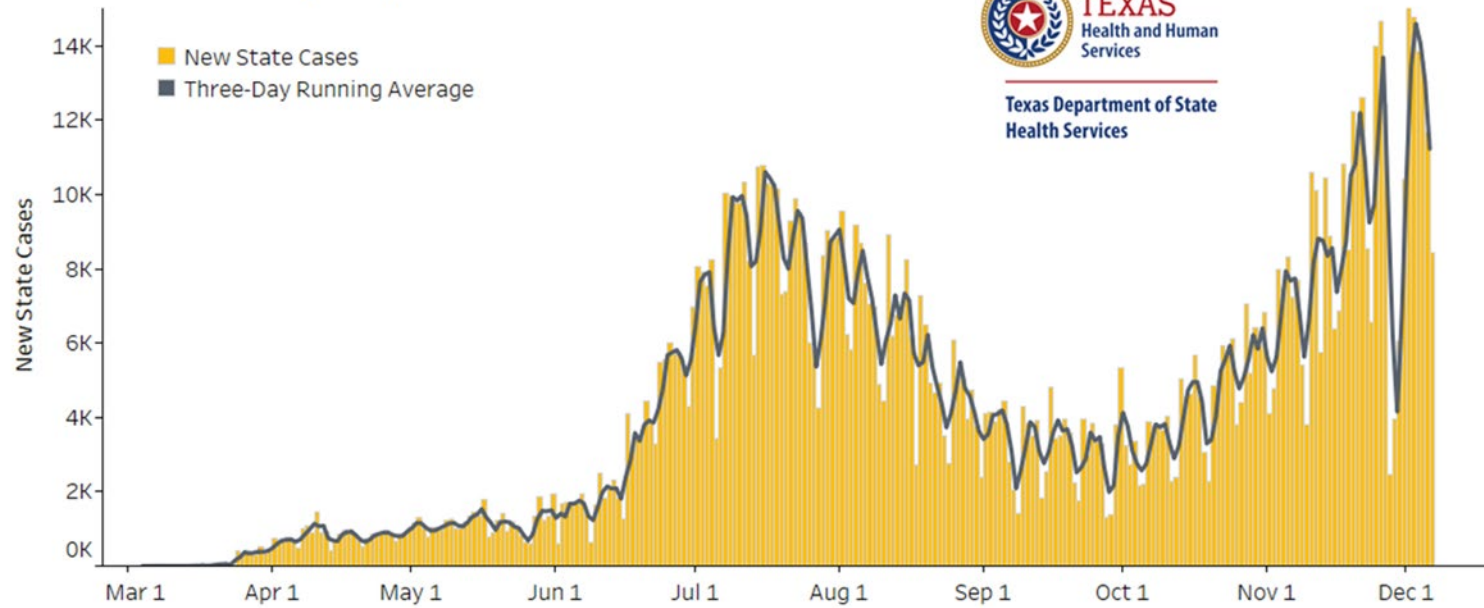
December 7, 2020

**John W. Hellerstedt, MD, Commissioner**  
**Texas Department of State Health Services**

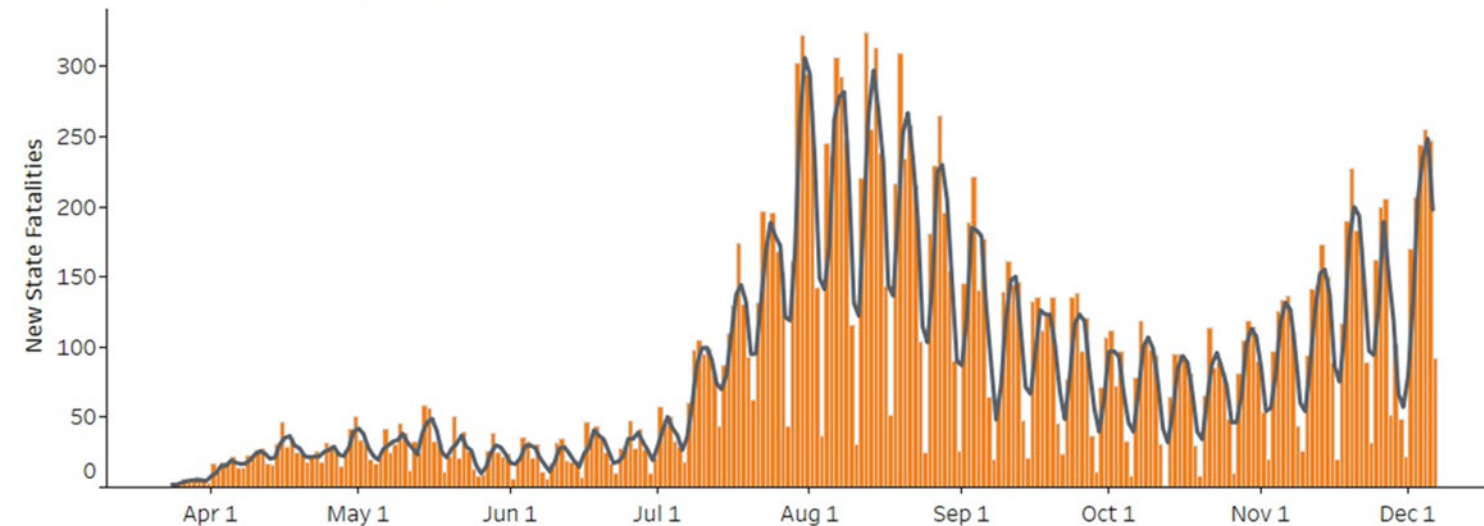
# Texas COVID-19 Timeline

- **January 23:** DSHS launched the [dshs.texas.gov/coronavirus/](https://dshs.texas.gov/coronavirus/) website and prepared #TexasDSHS social media campaigns
- **January 31:** DSHS activated the State Medical Operations Center (SMOC)
- **March 4:** DSHS announced the first positive test result for COVID-19 in Texas
- **March 13:** Governor Greg Abbott declared a State of Disaster for all Texas counties and began issuing Executive Orders and Waivers to mitigate the crisis
- **March 17:** DSHS announced the first death of a person with lab-confirmed COVID-19
- **March 19:** DSHS Commissioner Hellerstedt declared a Public Health Disaster for Texas
- **December 6:** **1,249,323** confirmed COVID-19 cases reported in all 254 Texas counties with **22,594** fatalities

## New Texas Cases by Day



## New Texas Fatalities by Day



These preliminary data are current as of 1:00pm on 12/6/2020.

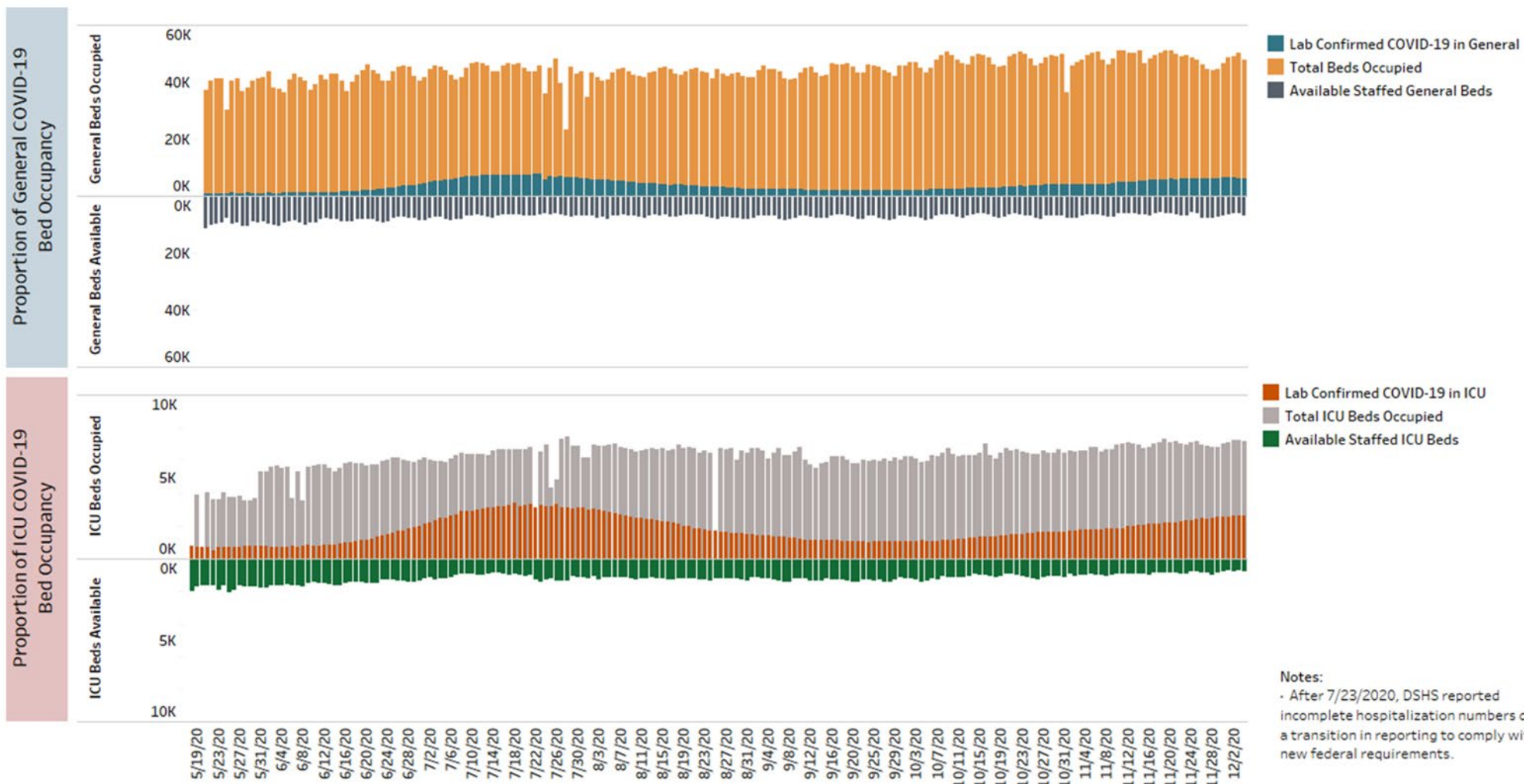
Note: As of July 27, DSHS is reporting COVID-19 fatality data based on death certificates. The metric used in these charts reports total newly reported fatalities (as opposed to the date of death).



Texas Department of State Health Services

# Hospitalizations Over Time

Total Texas Proportion of Lab-Confirmed COVID-19 Occupancy of General and ICU Beds out of Total Hospital Beds as of: Saturday, December 5, 2020

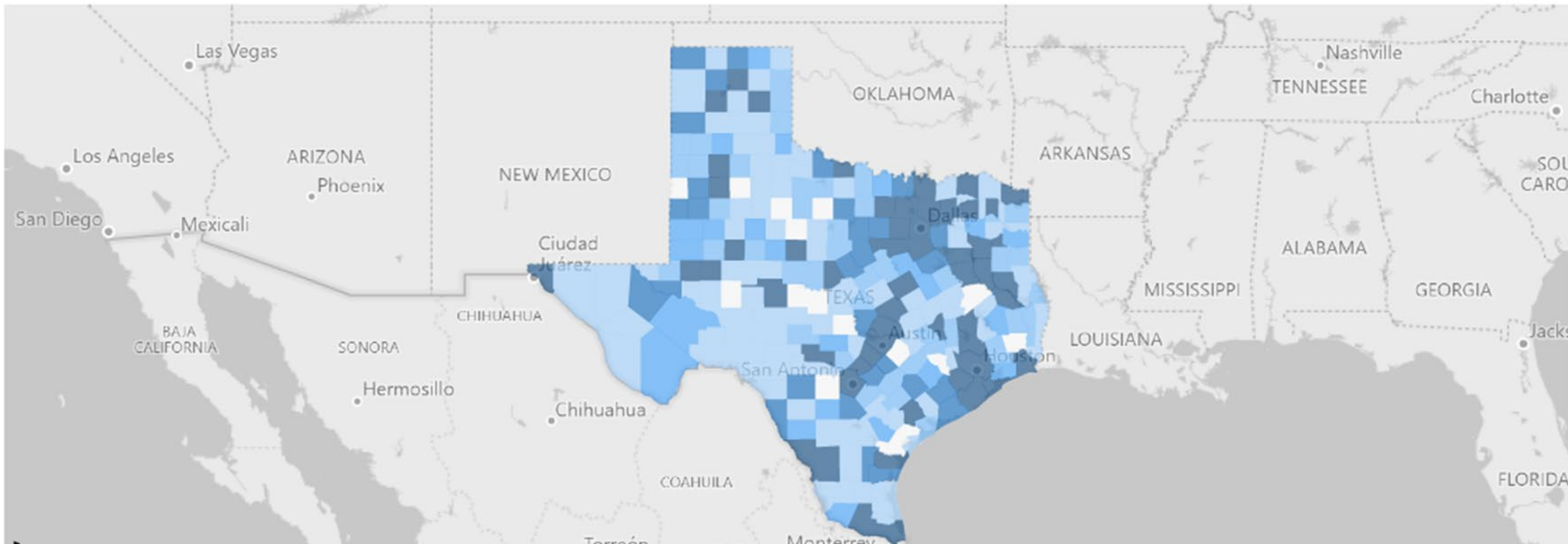
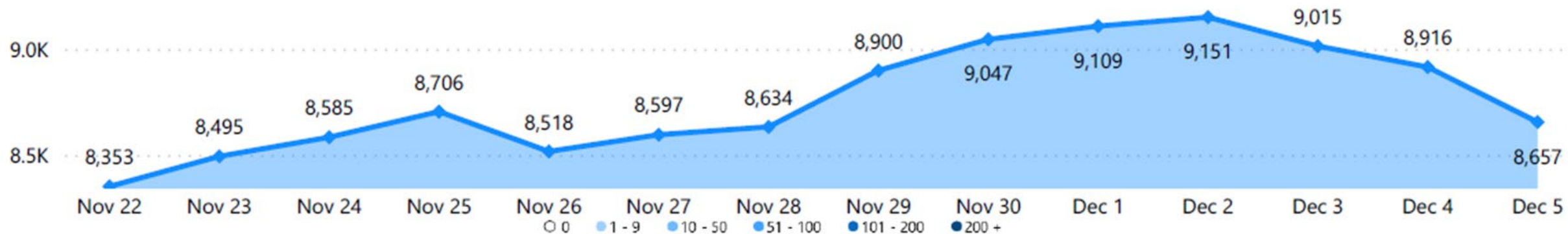


Notes:  
 - After 7/23/2020, DSHS reported incomplete hospitalization numbers due to a transition in reporting to comply with new federal requirements.

These preliminary data are current as of 1:00pm on 12/6/2020.



# Total Lab Confirmed Patients in Hospital



# DSHS Roles during the Pandemic

- Coordination of local and state public health efforts
- Statewide management and provision of lab testing and capacity
- Data collection, analysis, and reporting
- Health care system support and deployment of medical staffing to hospitals and nursing facilities
- Statewide public awareness
- Public health guidance for individuals and businesses, and consultation with local elected leaders
- Sourcing and allocating medications, medical supplies, and personal protective equipment
- Developing the infrastructure to safely and appropriately disseminate vaccine



# Estimated COVID-19 Pandemic Expenditures

Category	Amount Obligated
Medical Surge Staffing	\$1.7 Billion
Local Response	\$113.4 Million
Disease Surveillance	\$77.8 Million
Local Contracts	\$71.1 Million
Lab Costs	\$30.6 Million
Repatriation	\$5.4 Million
Other Costs	\$0.5 Million
<b>Total</b>	<b>\$1.97 Billion</b>



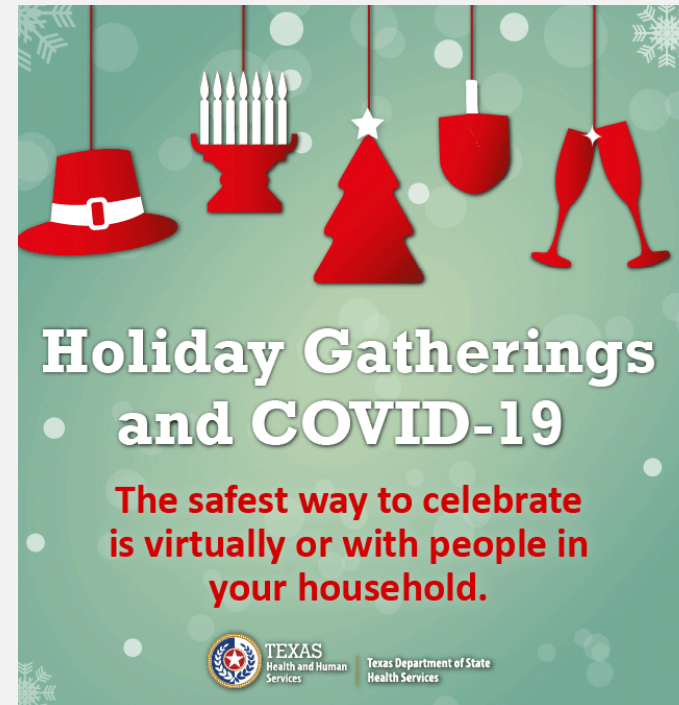
# DSHS Outputs as of Late November

- Health system support
  - 2,447 State of Texas Assistance Requests (STARs) filled
  - 10,016 Staff assigned to support hospitals
  - 850 Alternate care beds secured
  - 850+ Oxygen concentrators distributed
  - 980+ Ventilators distributed
- Call Center
  - 29,410 calls and 26,727 emails received
- Contact Tracing
  - 3,058 State and local contact tracers active
  - 51 Local health entities voluntarily participating in Texas Health Trace



# DSHS Communications

- Thanksgiving news release
  - Steps people can take to reduce spreading COVID-19
  - [dshs.texas.gov/news/releases/2020/20201118.aspx](https://dshs.texas.gov/news/releases/2020/20201118.aspx)
- #HealthyTexas Holiday Communications Toolkit
  - Includes animated videos, social media graphics, and radio spots in English and Spanish
  - [dshs.texas.gov/coronavirus/tools/holiday.aspx](https://dshs.texas.gov/coronavirus/tools/holiday.aspx)



## If you do gather with others, take steps to protect everyone:

- Talk with guests ahead of time about the precautions everyone should be taking.
- Limit the number of people who get together.
- Wear a mask with multiple layers that completely covers your nose and mouth.
- Keep six feet between people who don't live together.
- Gather and eat outside. If you must be inside, open windows to improve ventilation.
- Have guests bring their own food rather than sharing dishes and utensils.
- Frequently clean and disinfect items and surfaces touched by multiple people.

# COVID-19 Prevention

- Use face coverings in public
- Limit contact with others, maintain a physical distance, and avoid crowds
- Stay home, especially when sick
- Personal hygiene: wash hands, cover coughs, disinfect surfaces and objects
- Businesses and activities follow the minimum standard protocols and Executive Orders:

[dshs.texas.gov/coronavirus/opentexas](https://dshs.texas.gov/coronavirus/opentexas)



# Influenza Update as of Late November

- Texas Vaccines for Children (TVFC) and Adult Influenza Vaccine Initiative (AIVI) vaccine doses
  - 2,894,680 Total Ordered
  - 1,857,210 Total Received
  - 1,326,580 or 71% Total Shipped
  - 390,222 Flu vaccine current season doses reported to ImmTrac2
- Disease activity
  - 1.81 % Current Season Week 48 ILI (influenza-like illness)
  - 0 % Current Season Week 48 Positivity Public Health Labs

# Thank you!



[dshs.texas.gov/coronavirus](https://dshs.texas.gov/coronavirus)

Follow TexasDSHS on [Twitter](#) , [Facebook](#) , [YouTube](#) and [Instagram](#) or visit [www.dshs.texas.gov](http://www.dshs.texas.gov)