

**Weekly Flu Surveillance Report**  
**Public Health Region 9/10**  
**Week 08- February 20th- February 26th**



Texas Department of State Health Services

**Disclaimer**

Most cases of influenza are not reportable in the state of Texas, thus the data in this report was collected from hospitals, clinics, and schools throughout the region who have agreed to voluntarily submit data.

**Definitions**

**ILI:** Influenza-Like Illness. This is an illness that resembles the flu, but has not been confirmed. **Rapid:** These tests are typically done in-house to quickly test for influenza. **PCR:** These tests are generally more precise than rapid tests and are performed at the DSHS state lab and many commercial labs to confirm a case of influenza.

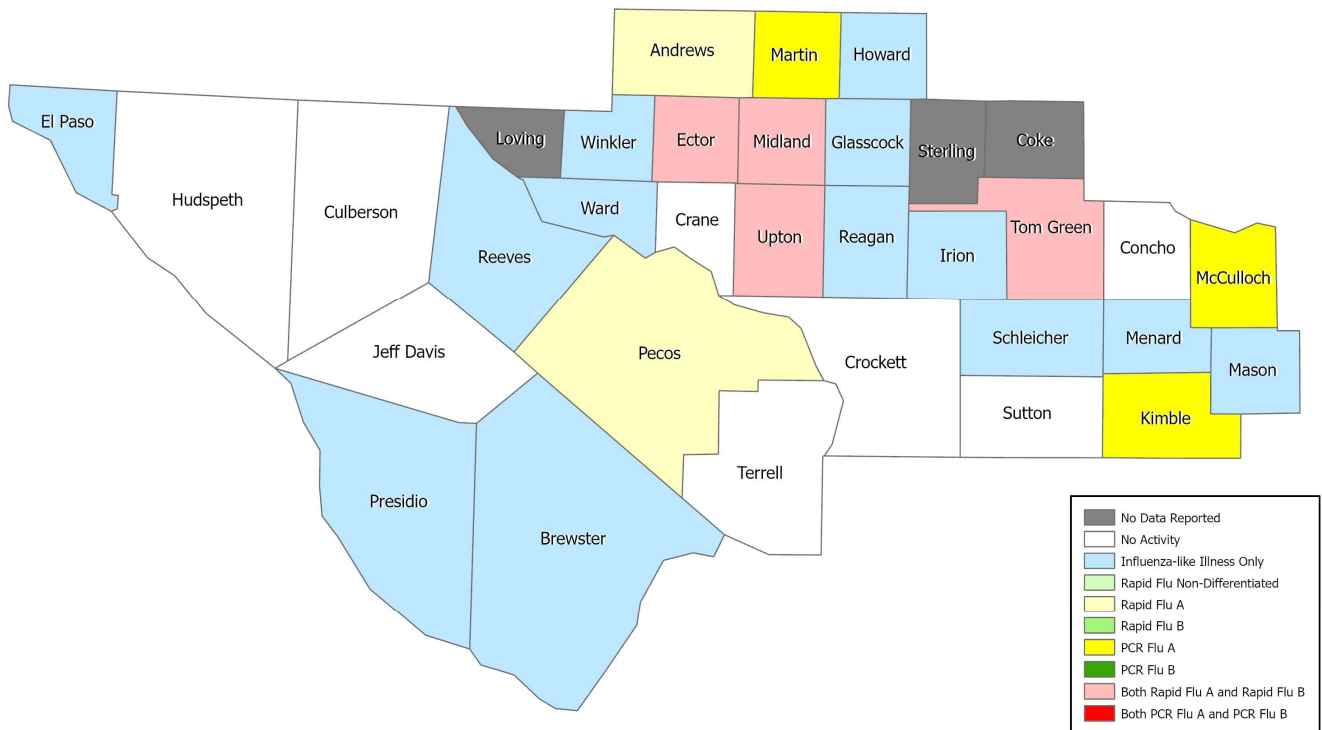
**Summary Data**

Condition	Week 08	Week 07	Week 06
Number of Counties Reporting (36 total)	↓ 32	35	34
Number of Counties Reporting ILI	↑ 16	15	18
Number of Counties Reporting High Levels of ILI*	↑ 6	2	5
Number of Counties Reporting Flu A	→ 9	9	12
Number of Counties Reporting Flu B	↑ 4	3	3
Number of Counties Reporting Flu A & Flu B	↑ 4	3	3

The arrows represent changes from the previous week. A sideways arrow means there was no change in that condition.

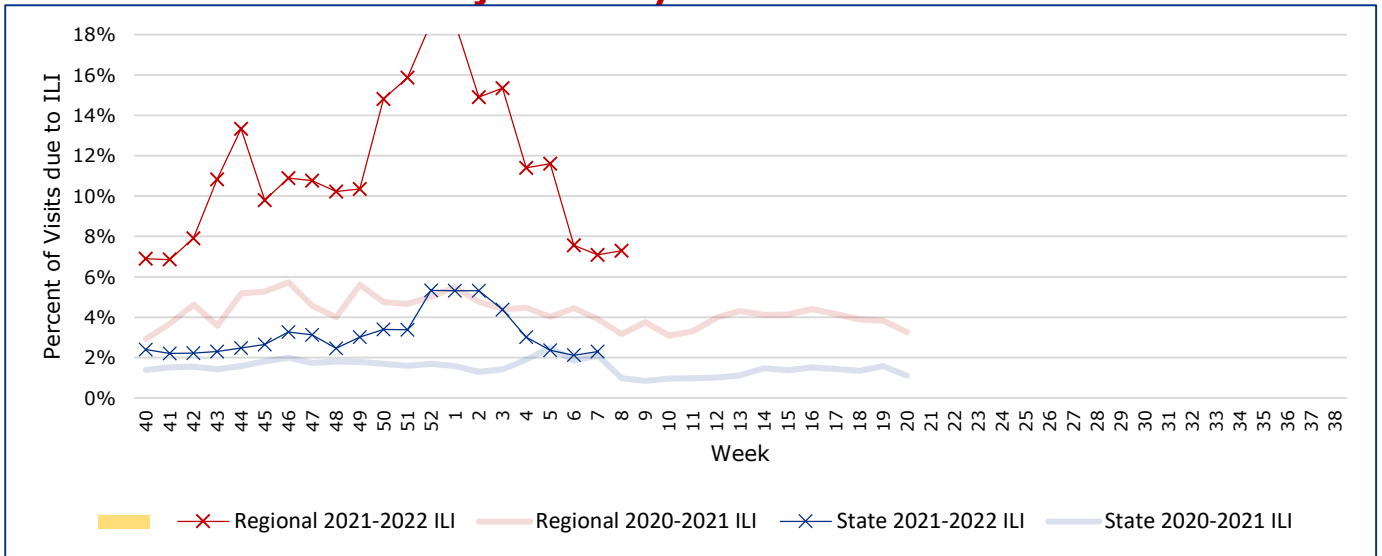
\*Counties with total percent of visits due to ILI above 4.0% for the week are considered to have high/abnormal levels.

**Map of Regional Flu Activity**



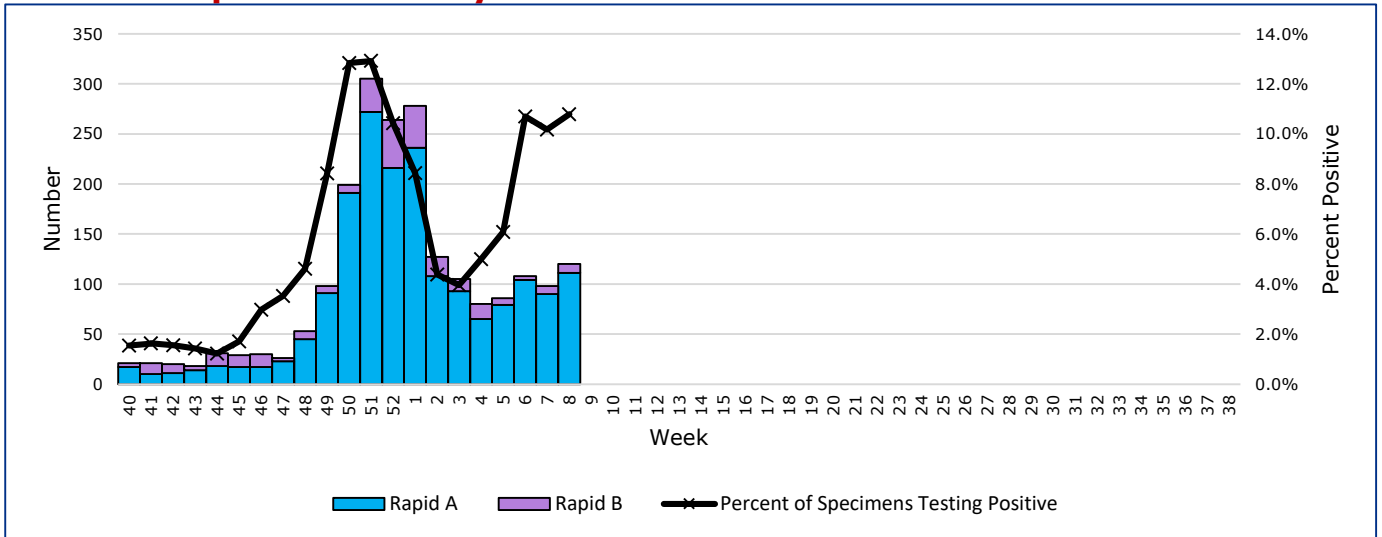
The map above depicts the previous week's reports of flu or influenza-like illness activity in each county. The legend on the bottom right of the map describes the meaning of each color.

## Influenza-Like Illness Projections by Week



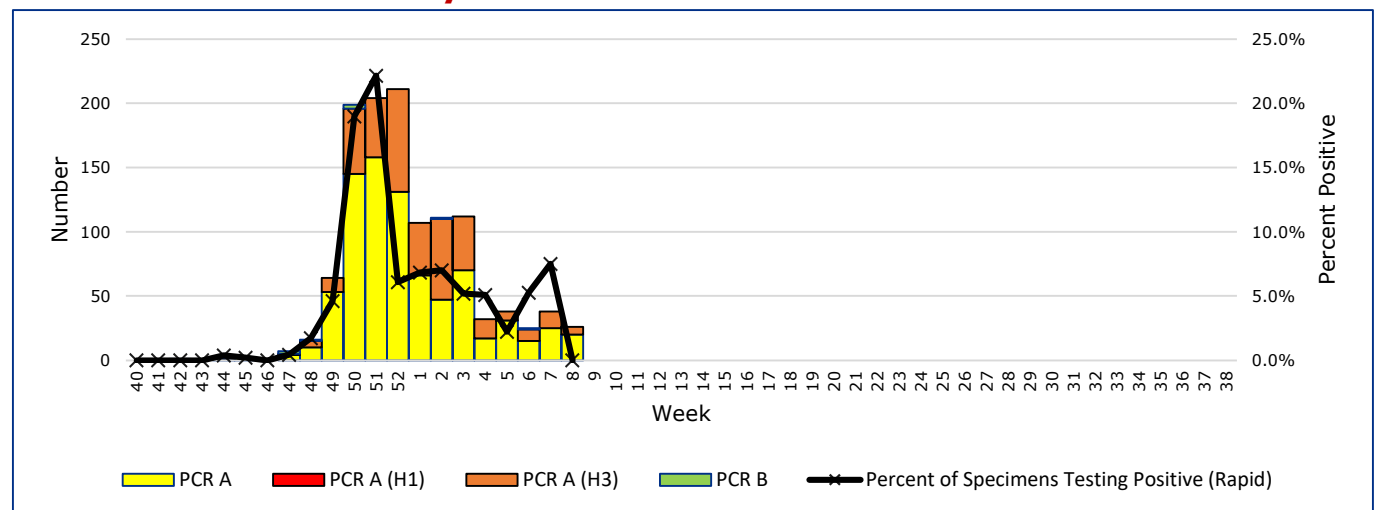
This chart documents the percentage of patient visits that were due to ILI at hospitals and clinics around the region. It compares our region's data with the state's data and also compares to last flu season.

## Positive Rapid Flu Tests by Week



This chart documents the number of rapid tests that have come back positive for flu A and flu B each week throughout the region.

## Positive PCR Flu Tests by Week



This chart documents the number of PCR tests that have come back positive for flu A and flu B each week throughout the region.

## Flu Data by County

County	Week 08				Week 07				Week 06			
	Patient Visits	% with ILI	Flu A	Flu B	Patient Visits	% with ILI	Flu A	Flu B	Patient Visits	% with ILI	Flu A	Flu B
Andrews	393	0%	3	0	495	0%	0	0	514	0%	3	0
Brewster	62	5%	0	0	68	1%	0	0	73	0%	0	0
Coke	0		0	0	3	0%	0	0	2	0%	0	0
Concho	19	0%	0	0	20	0%	0	0	22	18%	0	0
Crane	32	0%	0	0	23	0%	0	0	28	0%	0	0
Crockett	5	0%	0	0	6	0%	0	0	8	0%	0	0
Culberson	9	0%	0	0	5	0%	0	0	5	0%	0	0
Ector	3789	15%	40	4	3551	17%	41	5	3884	17%	56	0
El Paso	7887	2%	0	0	7830	3%	0	0	8269	2%	0	0
Glasscock	4	25%	0	0	1	0%	0	0	9	11%	0	0
Howard	273	3%	0	0	314	2%	0	0	307	3%	0	0
Hudspeth	23	0%	0	0	18	0%	0	0	18	0%	0	0
Irion	1	100%	0	0	1	0%	0	0	0		0	0
Jeff Davis	13	0%	0	0	13	0%	0	0	10	0%	0	0
Kimble	121	12%	5	0	281	4%	9	0	306	5%	15	1
Loving	0		0	0	0		0	0	0		0	0
McCulloch	571	18%	17	0	599	22%	16	0	608	11%	6	0
Martin	365	10%	4	0	519	9%	7	0	63	16%	0	0
Mason	7	29%	0	0	33	12%	0	0	44	9%	0	0
Menard	13	31%	0	0	11	36%	0	0	19	42%	2	0
Midland	2116	11%	21	3	2201	9%	14	0	2217	8%	6	0
Pecos	828	0%	9	0	717	0%	2	0	711	0%	3	0
Presidio	90	1%	0	0	130	11%	0	0	119	0%	0	0
Reagan	24	4%	0	0	15	7%	0	0	27	0%	0	0
Reeves	107	7%	0	0	118	3%	0	0	111	8%	0	0
Schleicher	8	63%	0	0	21	38%	2	0	13	69%	2	2
Sterling	0		0	0	1	0%	0	0	2	0%	0	0
Sutton	16	0%	0	0	23	0%	0	0	26	0%	0	0
Terrell	12	0%	0	0	3	0%	0	0	9	0%	0	0
Tom Green	1128	4%	37	1	1236	2%	38	1	1195	3%	27	2
Upton	120	29%	1	1	135	36%	6	2	159	35%	4	0
Ward	114	2%	0	0	114	2%	0	0	523	25%	1	0
Winkler	26	4%	0	0	34	0%	0	0	350	9%	4	0
<b>Total</b>	<b>18369</b>	<b>7.1%</b>	<b>137</b>	<b>9</b>	<b>18776</b>	<b>6.9%</b>	<b>135</b>	<b>8</b>	<b>19913</b>	<b>7.4%</b>	<b>129</b>	<b>5</b>

## Flu-Associated Pediatric Deaths & Outbreaks

No flu-associated pediatric deaths have been reported in PHR 9/10 this flu season. No flu outbreaks have been reported for Week 08.