

Weekly Flu Surveillance Report
Public Health Region 9/10
Week 07- February 13th- February 19th



Texas Department of State Health Services

Disclaimer

Most cases of influenza are not reportable in the state of Texas, thus the data in this report was collected from hospitals, clinics, and schools throughout the region who have agreed to voluntarily submit data.

Definitions

ILI: Influenza-Like Illness. This is an illness that resembles the flu, but has not been confirmed. **Rapid:** These tests are typically done in-house to quickly test for influenza. **PCR:** These tests are generally more precise than rapid tests and are performed at the DSHS state lab and many commercial labs to confirm a case of influenza.

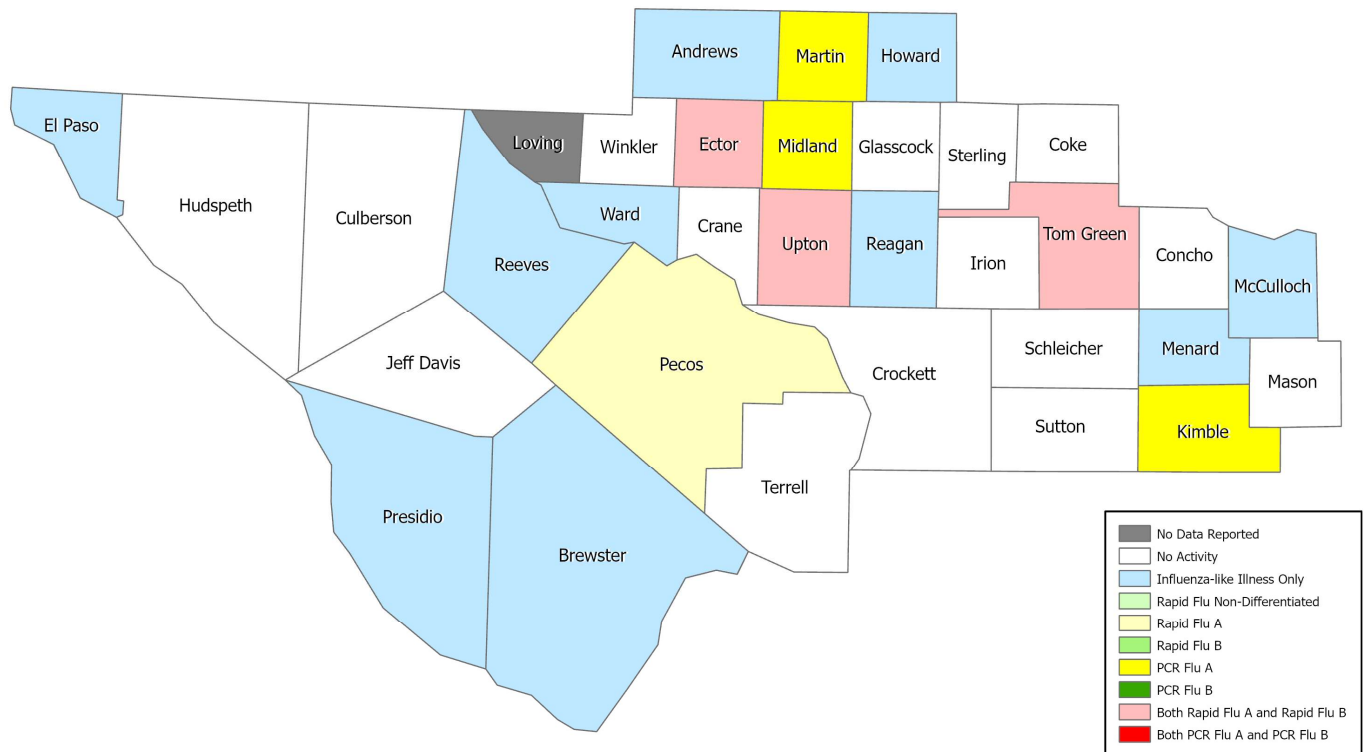
Summary Data

Condition	Week 07	Week 06	Week 05
Number of Counties Reporting (36 total)	↑ 35	34	34
Number of Counties Reporting ILI	↓ 15	18	12
Number of Counties Reporting High Levels of ILI*	↓ 3	5	3
Number of Counties Reporting Flu A	↓ 7	12	12
Number of Counties Reporting Flu B	→ 3	3	1
Number of Counties Reporting Flu A & Flu B	→ 3	3	1

The arrows represent changes from the previous week. A sideways arrow means there was no change in that condition.

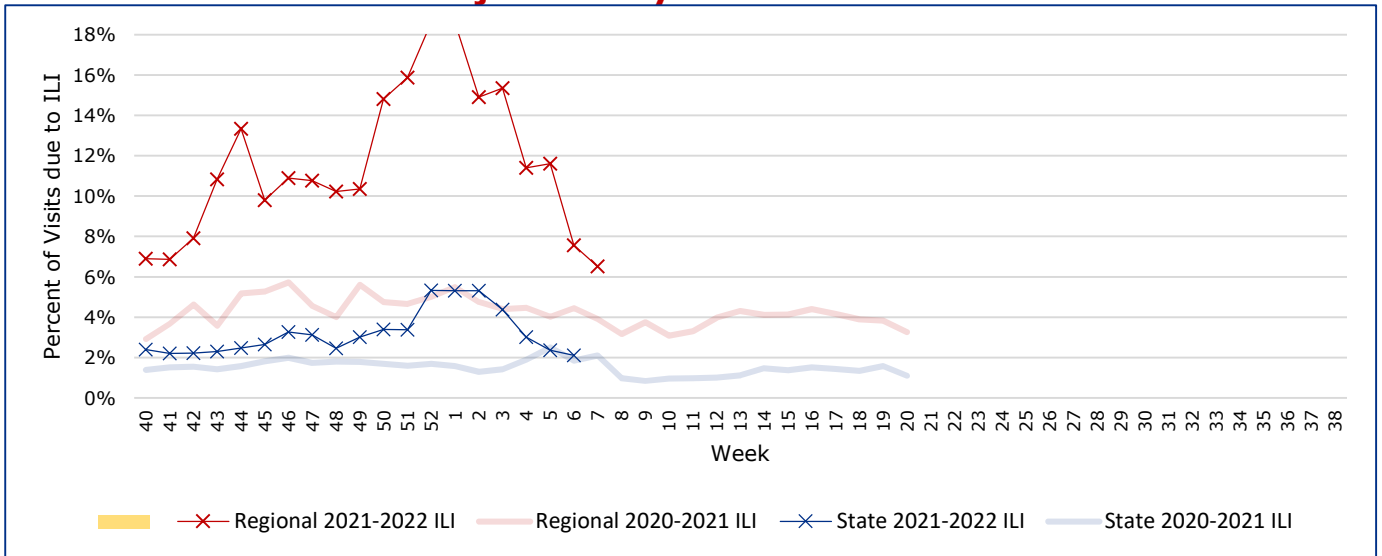
*Counties with total percent of visits due to ILI above 4.0% for the week are considered to have high/abnormal levels.

Map of Regional Flu Activity



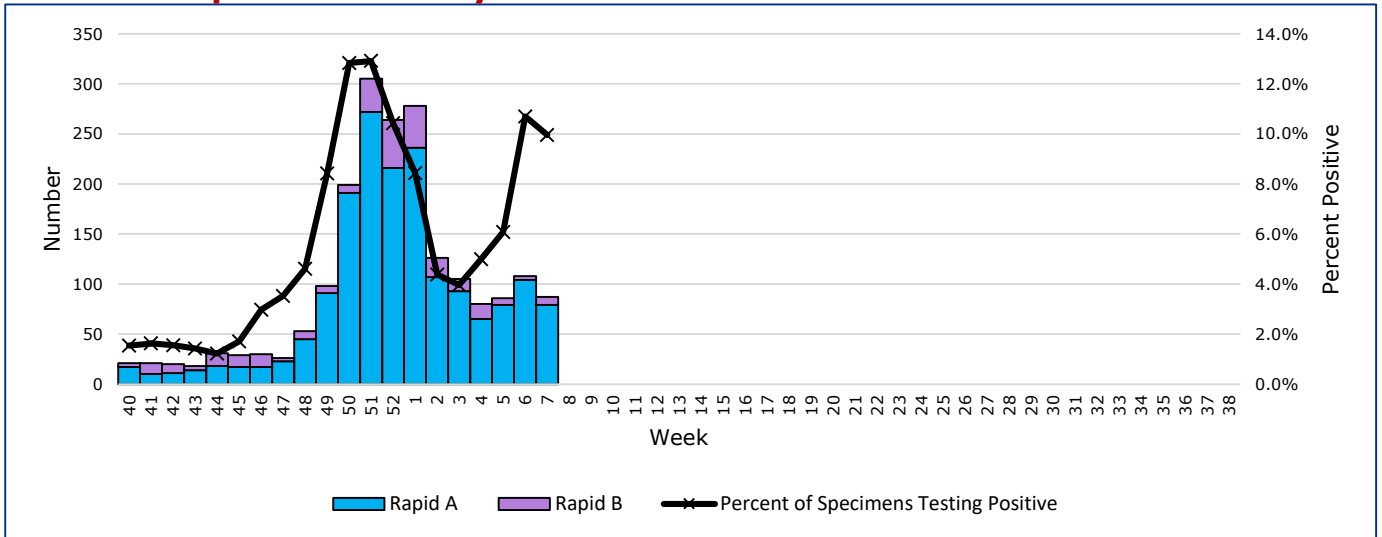
The map above depicts the previous week's reports of flu or influenza-like illness activity in each county. The legend on the bottom right of the map describes the meaning of each color.

Influenza-Like Illness Projections by Week



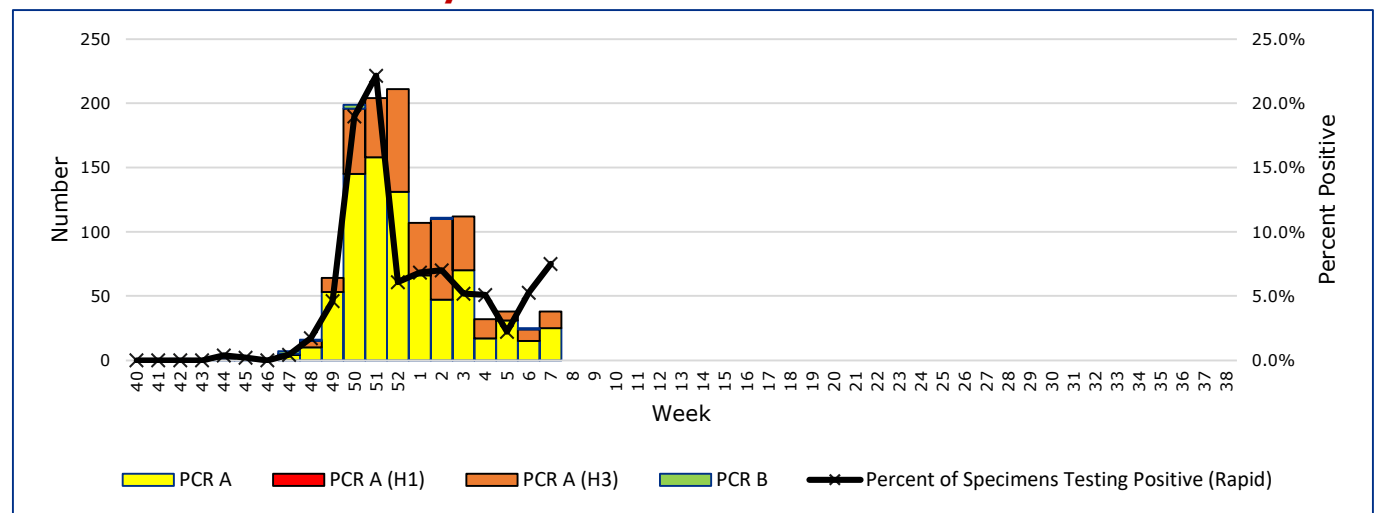
This chart documents the percentage of patient visits that were due to ILI at hospitals and clinics around the region. It compares our region's data with the state's data and also compares to last flu season.

Positive Rapid Flu Tests by Week



This chart documents the number of rapid tests that have come back positive for flu A and flu B each week throughout the region.

Positive PCR Flu Tests by Week



This chart documents the number of PCR tests that have come back positive for flu A and flu B each week throughout the region.

Flu Data by County

County	Week 07				Week 06				Week 05			
	Patient Visits	% with ILI	Flu A	Flu B	Patient Visits	% with ILI	Flu A	Flu B	Patient Visits	% with ILI	Flu A	Flu B
Andrews	495	0%	0	0	514	0%	3	0	486	0%	1	0
Brewster	68	1%	0	0	73	0%	0	0	67	1%	0	0
Coke	3	0%	0	0	2	0%	0	0	2	0%	0	0
Concho	20	0%	0	0	22	18%	0	0	24	0%	0	0
Crane	23	0%	0	0	28	0%	0	0	28	0%	0	0
Crockett	6	0%	0	0	8	0%	0	0	2	0%	0	0
Culberson	5	0%	0	0	5	0%	0	0	9	0%	0	0
Ector	3551	17%	41	5	3884	17%	56	0	3823	18%	45	7
El Paso	7830	3%	0	0	8269	2%	0	0	7562	3%	0	0
Glasscock	1	0%	0	0	9	11%	0	0	3	33%	0	0
Howard	314	2%	0	0	307	3%	0	0	278	3%	0	0
Hudspeth	18	0%	0	0	18	0%	0	0	20	0%	0	0
Irion	1	0%	0	0	0		0	0	1	0%	0	0
Jeff Davis	13	0%	0	0	10	0%	0	0	15	0%	0	0
Kimble	281	4%	9	0	306	5%	15	1	263	3%	6	0
Loving	0		0	0	0		0	0	0		0	0
McCulloch	86	5%	0	0	608	17%	6	0	1340	23%	14	0
Martin	519	9%	7	0	63	16%	0	0	252	30%	20	0
Mason	29	0%	0	0	44	9%	0	0	47	11%	0	0
Menard	8	13%	0	0	19	42%	2	0	35	51%	2	0
Midland	2201	9%	14	0	2217	8%	6	0	1973	10%	4	0
Pecos	717	0%	2	0	711	0%	3	0	570	0%	3	0
Presidio	121	12%	0	0	119	8%	0	0	98	0%	0	0
Reagan	15	7%	0	0	27	0%	0	0	17	0%	0	0
Reeves	118	3%	0	0	111	8%	0	0	132	5%	0	0
Schleicher	3	0%	0	0	13	69%	2	2	9	44%	4	0
Sterling	1	0%	0	0	2	0%	0	0	0		0	0
Sutton	23	0%	0	0	26	0%	0	0	20	0%	0	0
Terrell	3	0%	0	0	9	0%	0	0	5	0%	0	0
Tom Green	1236	2%	38	1	1195	3%	27	2	1078	3%	16	0
Upton	135	36%	6	2	159	35%	4	0	109	27%	0	0
Ward	114	2%	0	0	523	25%	1	0	574	31%	1	0
Winkler	34	0%	0	0	350	9%	4	0	418	34%	1	0
Total	18229	6.4%	117	8	19913	7.4%	129	5	19503	11.4%	117	7

Flu-Associated Pediatric Deaths & Outbreaks

No flu-associated pediatric deaths have been reported in PHR 9/10 this flu season. No flu outbreaks have been reported for Week 07.