

**Weekly Flu Surveillance Report**  
 Public Health Region 9/10  
 Week 49- December 5th- December 11th



Texas Department of State Health Services

**Disclaimer**

Most cases of influenza are not reportable in the state of Texas, thus the data in this report was collected from hospitals, clinics, and schools throughout the region who have agreed to voluntarily submit data.

**Definitions**

**ILI:** Influenza-Like Illness. This is an illness that resembles the flu, but has not been confirmed. **Rapid:** These tests are typically done in-house to quickly test for influenza. **PCR:** These tests are generally more precise than rapid tests and are performed at the DSHS state lab and many commercial labs to confirm a case of influenza.

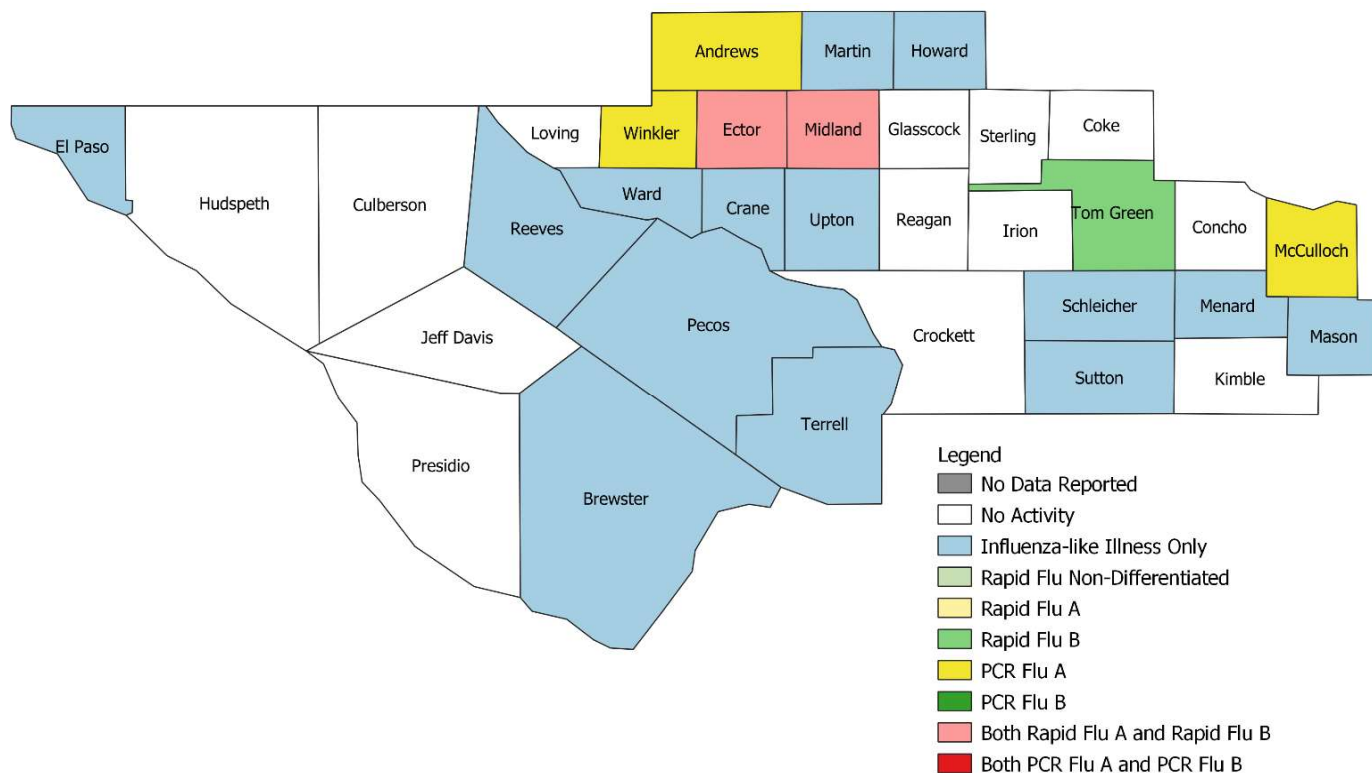
**Summary Data**

Condition	Week 49	Week 48	Week 47
Number of Counties Reporting (36 total)	↑ 35	34	34
Number of Counties Reporting ILI	↓ 19	22	17
Number of Counties Reporting High Levels of ILI*	↓ 7	14	6
Number of Counties Reporting Flu A	↓ 5	6	4
Number of Counties Reporting Flu B	→ 3	3	3
Number of Counties Reporting Flu A & Flu B	↑ 2	1	2

The arrows represent changes from the previous week. A sideways arrow means there was no change in that condition.

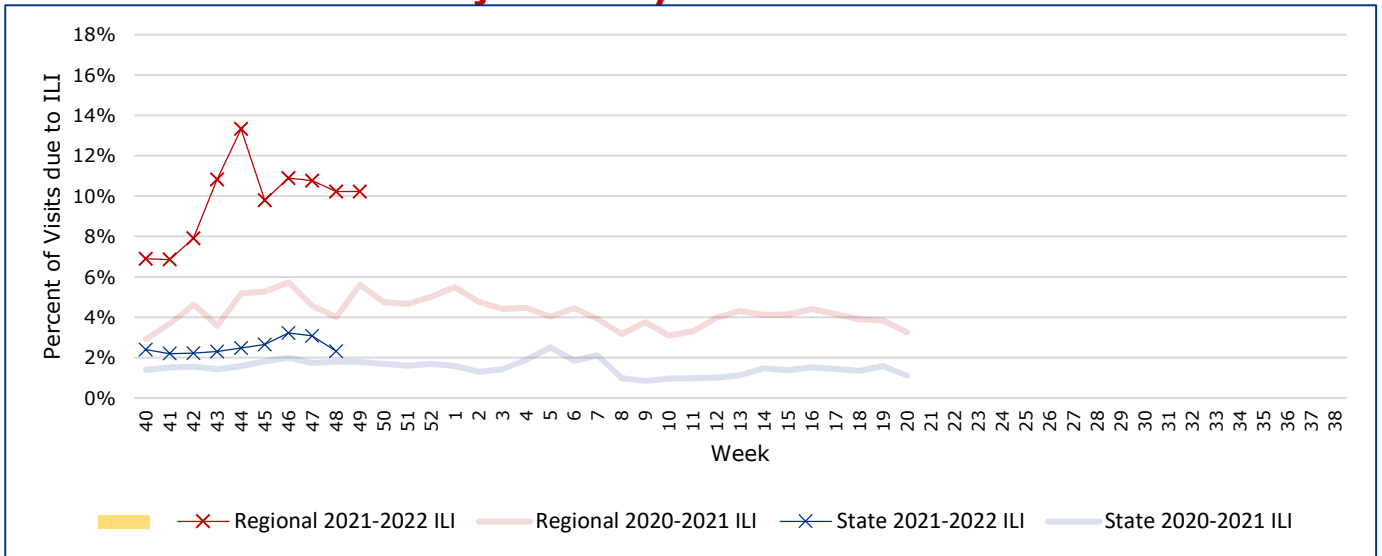
\*Counties with total percent of visits due to ILI above 4.0% for the week are considered to have high/abnormal levels.

**Map of Regional Flu Activity**



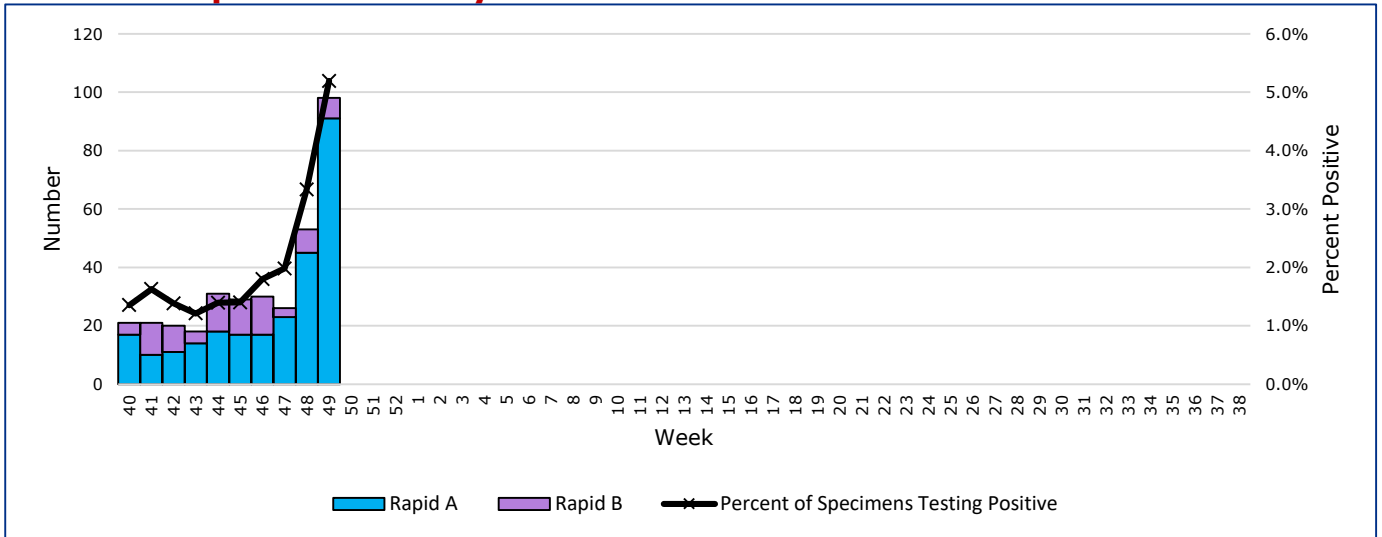
The map above depicts the previous week's reports of flu or influenza-like illness activity in each county. The legend on the bottom right of the map describes the meaning of each color.

## Influenza-Like Illness Projections by Week



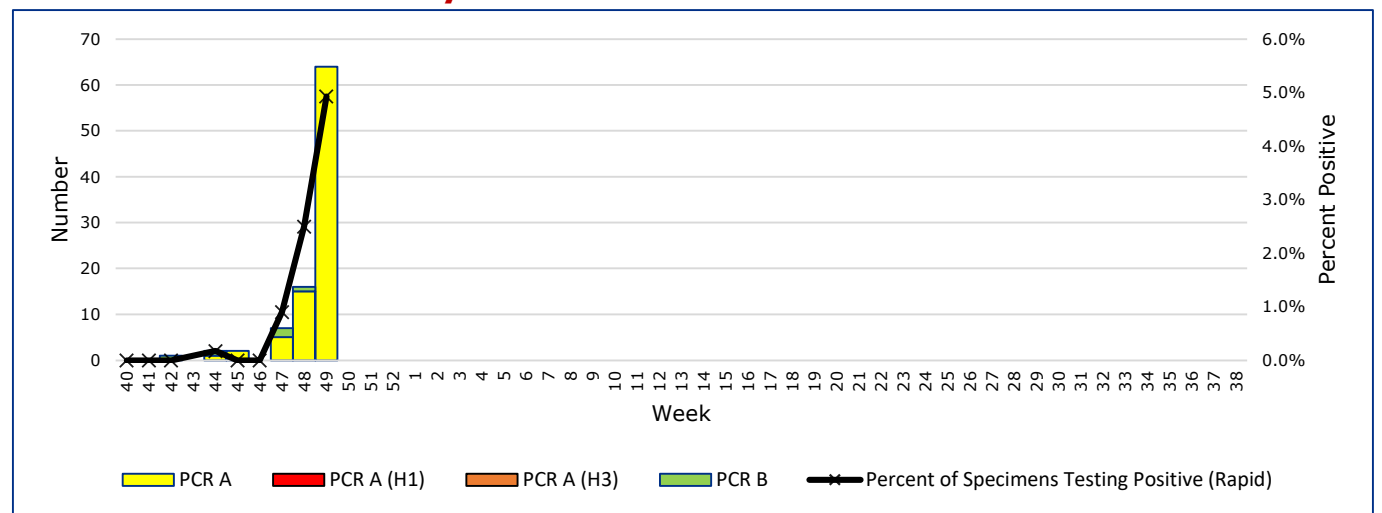
This chart documents the percentage of patient visits that were due to ILI at hospitals and clinics around the region. It compares our region's data with the state's data and also compares to last flu season.

## Positive Rapid Flu Tests by Week



This chart documents the number of rapid tests that have come back positive for flu A and flu B each week throughout the region.

## Positive PCR Flu Tests by Week



This chart documents the number of PCR tests that have come back positive for flu A and flu B each week throughout the region.

## Flu Data by County

County	Week 49				Week 48				Week 47			
	Patient Visits	% with ILI	Flu A	Flu B	Patient Visits	% with ILI	Flu A	Flu B	Patient Visits	% with ILI	Flu A	Flu B
Andrews	477	0%	10	0	583	0%	5	0	322	1%	2	0
Brewster	84	5%	0	0	89	0%	0	0	94	1%	0	0
Coke	1	0%	0	0	3	0%	0	0	6	0%	0	0
Concho	19	0%	0	0	19	5%	0	0	20	0%	0	0
Crane	37	8%	0	0	25	4%	0	0	26	0%	0	0
Crockett	1	0%	0	0	5	0%	0	0	3	0%	0	0
Culberson	7	0%	0	0	6	0%	0	0	4	0%	0	0
Ector	5217	18%	104	5	5606	16%	44	8	4003	18%	24	3
El Paso	8560	3%	0	0	9033	4%	0	0	8531	4%	0	0
Glasscock	5	0%	0	0	3	0%	0	0	5	0%	0	0
Howard	441	6%	0	0	350	3%	0	0	308	4%	0	0
Hudspeth	26	0%	0	0	17	0%	0	0	18	0%	0	0
Irion	1	0%	0	0	1	0%	0	0	0		0	0
Jeff Davis	18	0%	0	0	10	0%	0	0	13	8%	0	0
Kimble	238	0%	0	0	13	8%	0	0	118	0%	0	0
Loving	1	0%	0	0	0		0	0	0		0	0
McCulloch	584	18%	1	0	400	23%	3	0	98	5%	0	0
Martin	523	5%	0	0	43	7%	0	0	39	5%	0	0
Mason	37	11%	0	0	30	7%	0	0	43	0%	0	0
Menard	10	30%	0	0	15	0%	0	0	11	0%	0	0
Midland	3200	19%	37	1	2749	20%	6	0	2391	30%	1	2
Pecos	124	2%	0	0	129	3%	0	0	110	1%	0	0
Presidio	57	0%	0	0	116	8%	0	0	34	3%	0	0
Reagan	18	0%	0	0	18	6%	0	0	13	0%	0	0
Reeves	164	7%	0	0	172	9%	0	0	152	9%	0	0
Schleicher	20	35%	0	0	16	50%	0	0	23	26%	0	0
Sterling	1	0%	0	0	1	0%	0	0	1	0%	0	0
Sutton	20	5%	0	0	22	5%	0	0	20	0%	0	0
Terrell	23	9%	0	0	21	14%	0	0	5	0%	0	0
Tom Green	1231	1%	0	1	1358	1%	0	1	1174	2%	1	0
Upton	106	12%	0	0	172	43%	1	0	89	29%	0	0
Ward	120	3%	0	0	126	1%	0	0	88	1%	0	0
Winkler	429	25%	3	0	358	30%	1	0	271	23%	0	0
<b>Total</b>	<b>22090</b>	<b>9.9%</b>	<b>155</b>	<b>7</b>	<b>21788</b>	<b>10.0%</b>	<b>60</b>	<b>9</b>	<b>18323</b>	<b>10.5%</b>	<b>28</b>	<b>5</b>

### Flu-Associated Pediatric Deaths & Outbreaks

No flu-associated pediatric deaths have been reported in PHR 9/10 this flu season. No flu outbreaks have been reported for Week 49.