



**2020 DSHS Arbovirus Activity Report
Week #38 (ending Sep 19, 2020)
Report Date: Sep 22, 2020**

Table 1. 2020 Arbovirus Activity Summary, Texas, Week 38

Arbovirus	Positive Mosquito Pools	Avian	Equine	Sentinel Chicken	Human						TOTAL
					Febrile Illness	Neurologic Illness	Severe Dengue	TOTAL (HUMAN)	Deaths	PVD ²	
California Serogroup ¹								0			0
Chikungunya					2			2			2
Dengue					8			8			8
Eastern Equine Encephalitis								0			0
St. Louis Encephalitis	16							0			16
West Nile	1191	1		1	2	29		31	1	28	1224
Zika								0			0
TOTAL REPORTS	1207	1	0	1	12	29	0	41	1	28	1250

¹California Serogroup includes California encephalitis, Jamestown Canyon, Keystone, La Crosse, snowshoe hare, and trivittatus viruses.

²PVD - Presumptive viremic blood donors are people who had no symptoms at the time of donating blood through a blood collection agency, but whose blood tested positive when screened for the presence of West Nile virus or Zika virus. Unless they meet the case reporting criteria, they are not counted as a case for official reporting purposes and are not included in the "Total" column.

Note: Human mortality from arboviral conditions is aggregated and reported monthly once documentation has been received and verified.

For more detailed information about West Nile virus, including past weekly and annual reports, please visit

<http://www.dshs.texas.gov/idcu/disease/arboviral/westNile/>

For more detailed information about Zika, please visit <http://www.texaszika.org/>

Table 2. 2020 Aedes-Associated Arbovirus Activity by County†, Week 38

County	CHIKV*		DENV*		ZIKV*			COUNTY TOTAL
	M	H	M	H	M	H	PVD‡	
Bastrop				1				1
Brazos				1				1
Collin				1				1
Ector				1				1
Fort Bend				1				1
Harris				2				2
Hays				1				1
Total Number of Reports	0	2	0	8	0	0	0	10

M - mosquito H- human

CHIKV - Chikungunya Virus

DENV - Dengue Virus

ZIKV - Zika Virus

* All reported cases are imported.

†County level data is not reported for conditions with <5 cases reported in a year.

‡PVDs are not included in the "County Total" column.

Table 3. 2020 Other Arbovirus Activity by County†, Week 38

County	CAL		EEEV				SLEV			WNV								COUNTY TOTAL
	M	H	M	E	SC	H	M	SC	H	M	A	E	SC	H				
														WNF	WNND	PVD‡	TOTAL	
Bexar										1							0	1
Brazos										3						1	1	4
Cameron							1										0	1
Collin										30				1	2		3	33
Dallas										398					5	4	5	403
Denton										44					3	2	3	47
El Paso							3			5							0	8
Galveston													1				0	1
Harris										23	1				1		1	25
Hood																1	0	0
Hunt										1							0	1
Jefferson																1	0	0
Johnson										6							0	6
Kleberg							5										0	5
Lubbock							2			4							0	6
Montgomery										94						4	0	94
Nueces							5			1							0	6
Orange																2	0	0
Tarrant										535				1	12	12	13	548
Travis										31					3	1	3	34
Webb										1							0	1
Williamson										14					2	1	2	16
Total Number of Reports	0	0	0	0	0	0	16	0	0	1191	1	0	1	2	29	28	31	1240

M - mosquito A-avian E-equine SC- sentinel chicken H- human WNF - West Nile Fever WNND - West Nile Neuroinvasive Disease

CAL - California Serogroup Viruses

EEEV - Eastern Equine Encephalitis Virus

SLEV - St. Louis Encephalitis Virus

WNV - West Nile Virus

†County level data is not reported for conditions with <5 cases reported in a year.

‡PVDs are not included in any of the "total" columns.

Figure 1. Texas Counties Reporting Arbovirus Activity, Week 38

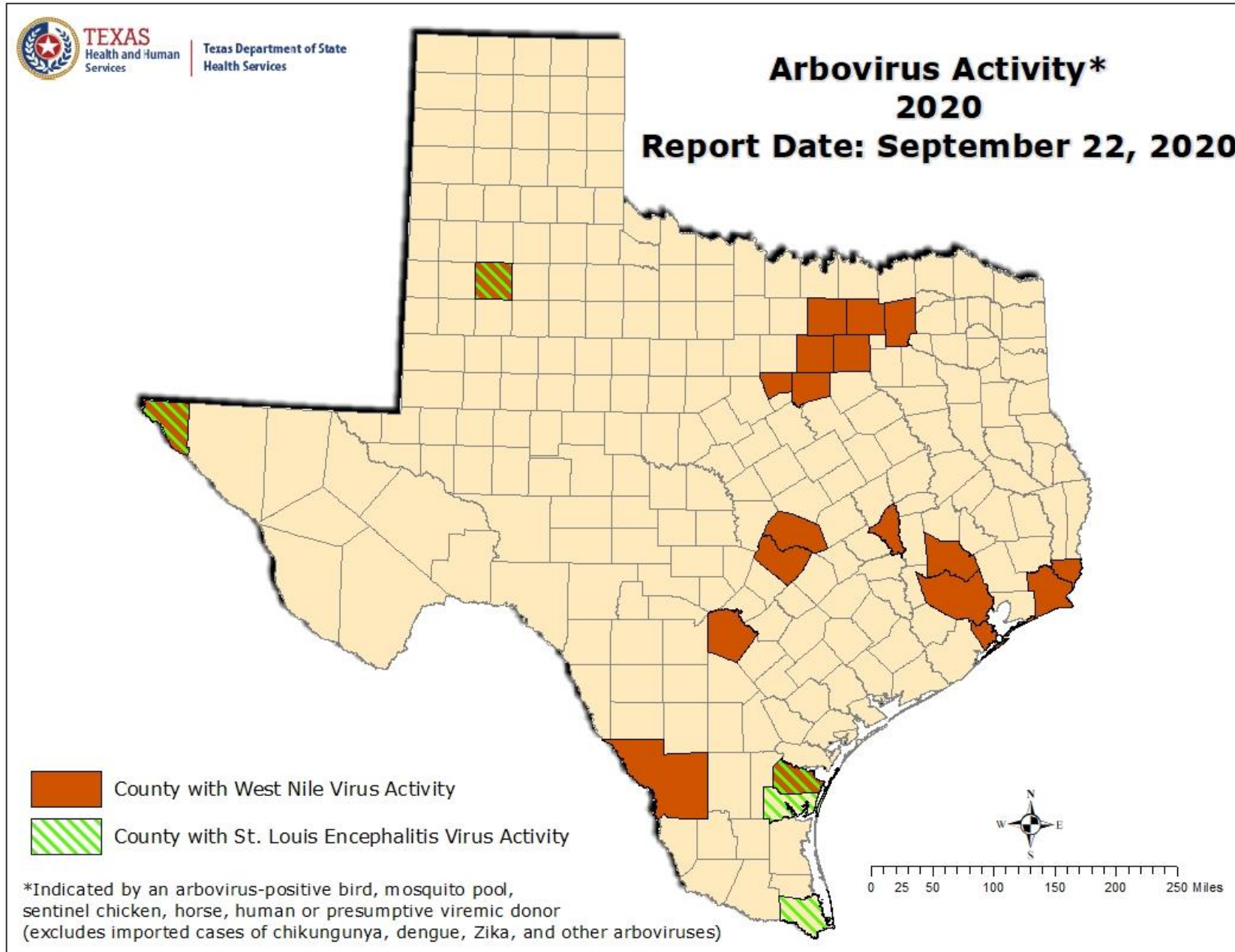


Figure 2. WNV-Positive Mosquito Pools Reported in Texas, by MMWR Week of Collection, 2018-2020, Week 38

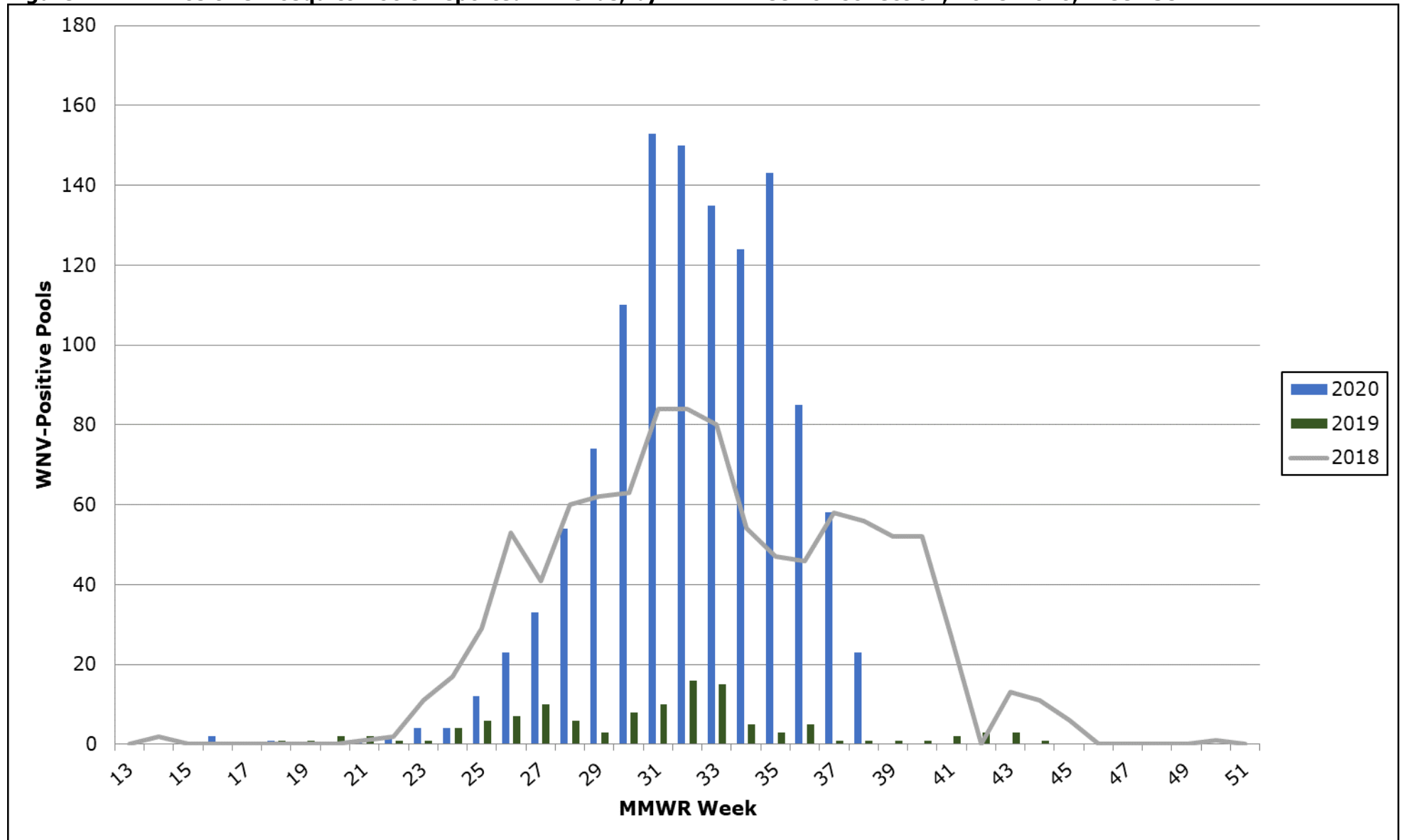


Figure 3. Human Cases of West Nile Virus Reported in Texas, by MMWR Week of Onset, 2018-2020, Week 38

